



REELCRAFT A5800 OLP Series 5000 Spring Driven Hose Reels Instruction Manual

[Home](#) » [REELCRAFT](#) » REELCRAFT A5800 OLP Series 5000 Spring Driven Hose Reels Instruction Manual 

REELCRAFT A5800 OLP Series 5000 Spring Driven Hose Reels



Contents

[1 Dimensions](#)

[2 SAFETY](#)

[3 Overview](#)

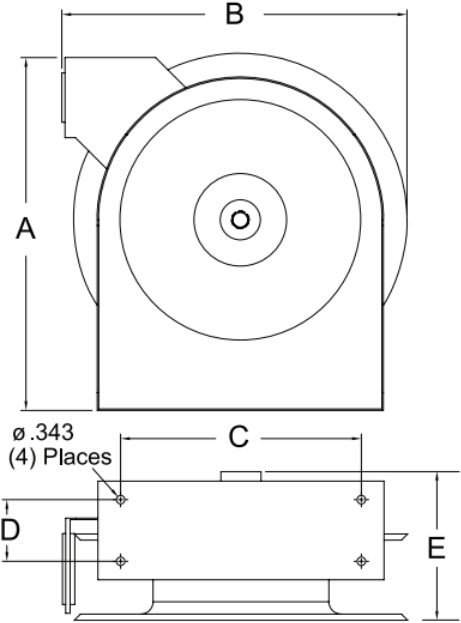
[4 Customer Support](#)

[5 Documents /
Resources](#)

[5.1 References](#)

[6 Related Posts](#)

Dimensions

	A	14 3/8"
	B	14"
	C	9 3/4"
	D	2 1/2"
	E	6 1/8"

SAFETY

INSTALLATION: A flexible hose connection must be used between the hose reel inlet and the source of supply to prevent possible misalignment and binding.

MOUNTING: The hose reel is equipped with a universal mounting bracket so that it can be mounted on the floor, wall or ceiling; whichever place is convenient. The hose guide arm can be moved to the position desired by removing the screws fastening the guide bracket to the reel base. Shift the guide arm bracket so the hose comes off the reel at the desired position and replace the screws. NOTE: For proper installation in wall mount applications, ensure reel is mounted with inlet on the right as you are facing the reel. Failing to do so could cause latching issues.

LUBRICATION: Hose reel spring and bearings are factory lubricated and require no further lubrication.

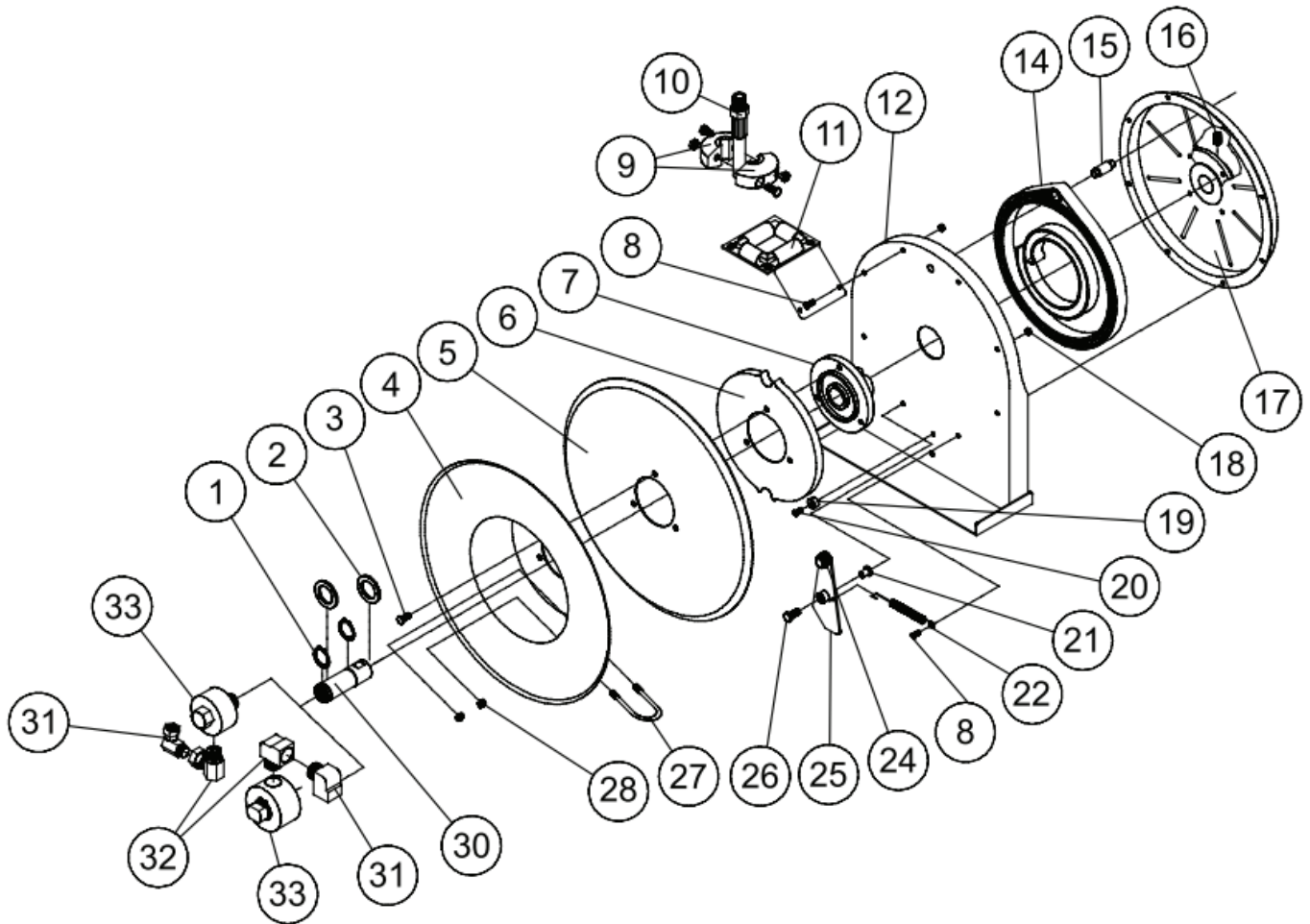
REPLACING HOSE:

1. Wind spool flange clockwise-facing swivel-until spring is tight.
2. Back off three turns and latch.
3. Insert hose through roller guide.
4. Connect hose fitting to swivel joint and secure hose with clamps.

ADJUSTMENTS: To adjust spring tension, add or remove wraps of hose from the spool, one wrap at a time until desired tension is obtained.

REPAIRS: Extensive repairs should be performed only by an authorized serviceman or factory to avoid damage which may void your warranty. Remove all spring tension before beginning disassembly process.

Overview



Item #	Part #	# Req.	Description
1	300031	2	1" Snap Ring
2	300034	2	Spacing Washer
3	S295-102	3	1/4-10 Hex Head Screw
4	260022	1	Flange Sheave
5	500006	1	Sheave Disk

6	S500019	1	Latch Cam
7	S260648	1	Spring Arbor
8	300002	7	10-32 x 1/2" Mach. Screw
11	S500107	1	Guide Arm & Roller Assembly
12	500101	1	Base Assembly
14	S505740	1	Drive Spring Assembly
15	S261360	1	Spring Case Stud
16	300006	1	3/8-16 x 1/2" Set Screw
17	S500103	1	Spring Case & Hub Assembly
18	S82-15	8	10-32 x 3/8" Nyloc Nut
19	S400021	1	Latch Bumper
20	S32-136	1	10-24 x 3/8" Self Tap Screw
21	S400012	1	Latch Bushing
22	S400018	1	Latch Spring
24	400020	1	O-ring

25	S400109	1	Latch Plate Assembly
26	300035	1	10-32 x 1" Mach. Screw
27	3-117440	1	U-bolt Hose Clamp
28	261650-1	2	1/4-20 Zinc Nyloc Nut
30	602305	1	Main Shaft & Snap Ring Assembly

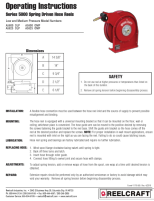
Item #	Description	# Req.	A5800 OLP	A5825 OLP	A5800 OMP	A5825 OMP
9	Bumper Stop Assembly	1	None	2-HR1004-3	None	2-HR1004-3
10	Hose Assembly	1	None	601020-25	None	21-260043
31	Swivel Union	1	S257-26	S257-26	260749	260749
32	Swivel Union	1	300010	300010	S257-26	S257-26
33	Swivel Assembly	1	S600915-1	S600915-1	S600172	S600172
Hose I.D. and Length			None	1/2" x 20'	1/2" x 25'	1/2" x 30'
Reel Inlet Connection			3/8" F.P.T.	3/8" F.P.T.	3/8" F.P.T.	3/8" F.P.T.
Max. Operating Pressure			500 P.S.I.	300 P.S.I.	3250 P.S.I.	3250 P.S.I.
Max. Operating Temperature			210 °F	150 °F	210 °F	210 °F

Customer Support

Reelcraft Industries, Inc. • 2842 E Business Hwy 30, Columbia City, IN 46725



Documents / Resources

	<p>REELCRAFT A5800 OLP Series 5000 Spring Driven Hose Reels [pdf] Instruction Manual A5800 OLP, A5800 OMP, A5825 OLP, A5825 OMP, A5800 OLP Series 5000 Spring Driven Hose Reels, A5800 OLP, Series 5000 Spring Driven Hose Reels, Spring Driven Hose Reels, Driven Hose Reels, Hose Reels, Reels</p>
---	--

References

- [Reelcraft Industries - Hose, Cord, and Cable Reels](#)

Manuals+