



REELCRAFT 5000 Spring Driven Hose Reels User Manual

[Home](#) » [REELCRAFT](#) » REELCRAFT 5000 Spring Driven Hose Reels User Manual 

Contents

- [1 REELCRAFT 5000 Spring Driven Hose Reels](#)
- [2 Product Information](#)
 - [2.1 Model Numbers](#)
- [3 Dimensions](#)
- [4 Safety Precautions](#)
- [5 Installation](#)
 - [5.1 Mounting](#)
- [6 Product Usage](#)
- [7 Part List](#)
- [8 Documents / Resources](#)
 - [8.1 References](#)
- [9 Related Posts](#)



REELCRAFT 5000 Spring Driven Hose Reels



Product Information

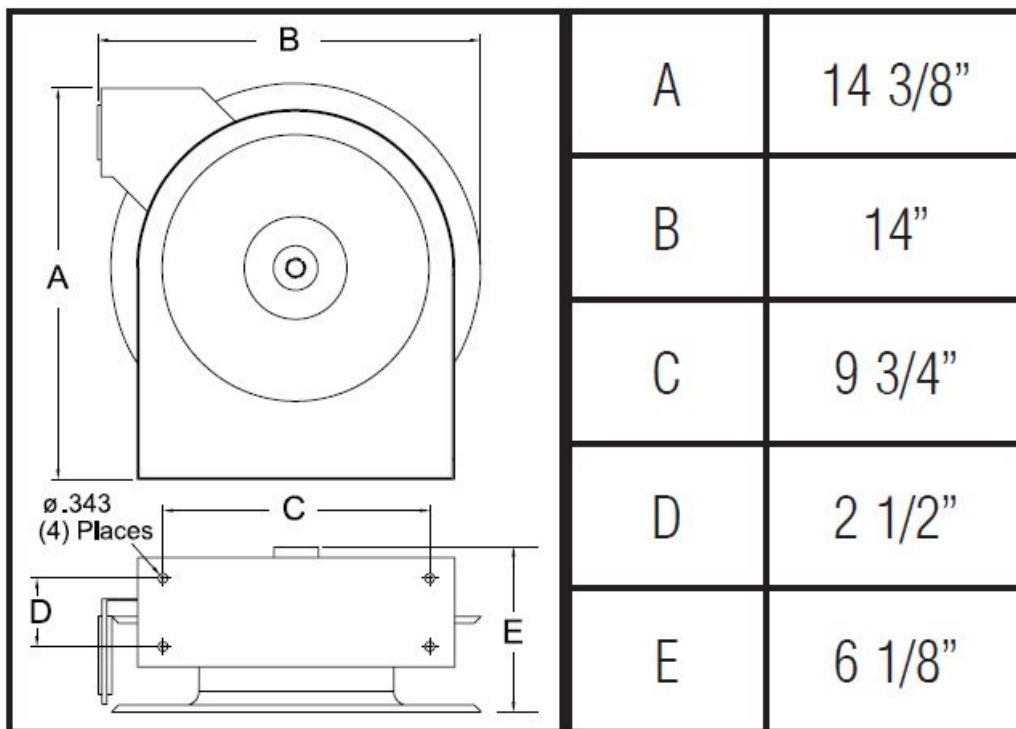
Series 5000 Spring Driven Hose Reels

The Series 5000 Spring Driven Hose Reels are designed to store and retrieve high-pressure hoses in a safe and efficient manner. These reels come in different models with varying hose lengths and operating pressures. They are made of durable materials to withstand harsh conditions and come with factory-lubricated bearings for long-lasting performance.

Model Numbers

- 5400 OHP
- 5420 OHP
- 5425 OHP
- 5430 OHP
- 5600 OHP
- 5620 OHP
- 5625 OHP

Dimensions



Safety Precautions

1. Do not exceed the maximum operating pressure and temperature listed in the product manual.
2. Remove all spring tension before disassembling the hose reel.
3. Perform extensive repairs only by authorized servicemen or factory personnel to avoid damaging the product and voiding the warranty.
4. Do not use the reel at higher pressures or temperatures than listed on the back of this bulletin.
5. Remove all spring tension before beginning the disassembly process.

Installation

A flexible hose connection must be used between the hose reel inlet and the source of supply to prevent possible misalignment and binding.

Mounting

The hose reel should be mounted securely on a flat surface using appropriate hardware.

The hose reel is equipped with a universal mounting bracket so that it can be mounted on the floor, wall, or ceiling; whichever place is convenient. The hose guide arm can be moved to the position desired by removing the screws and fastening the guide bracket to the reel base. Shift the guide arm bracket so the hose comes off the reel at the desired position and replace the screws.

NOTE:

For proper installation in wall mount applications, ensure the reel is mounted with an inlet on the right as you are facing the reel. Failing to do so could cause latching issues.

Lubrication:

The hose reel spring and bearings are factory lubricated and require no further lubrication.

Replacing Hose:

1. Wind spool flange clockwise-facing swivel-until spring is tight.
2. Back off three turns and latch.
3. Insert hose through roller guide.
4. Connect hose fitting to swivel joint and secure hose with clamps.

Adjustments:

To adjust spring tension, add or remove wraps of hose from the spool, one wrap at a time until desired tension is obtained.

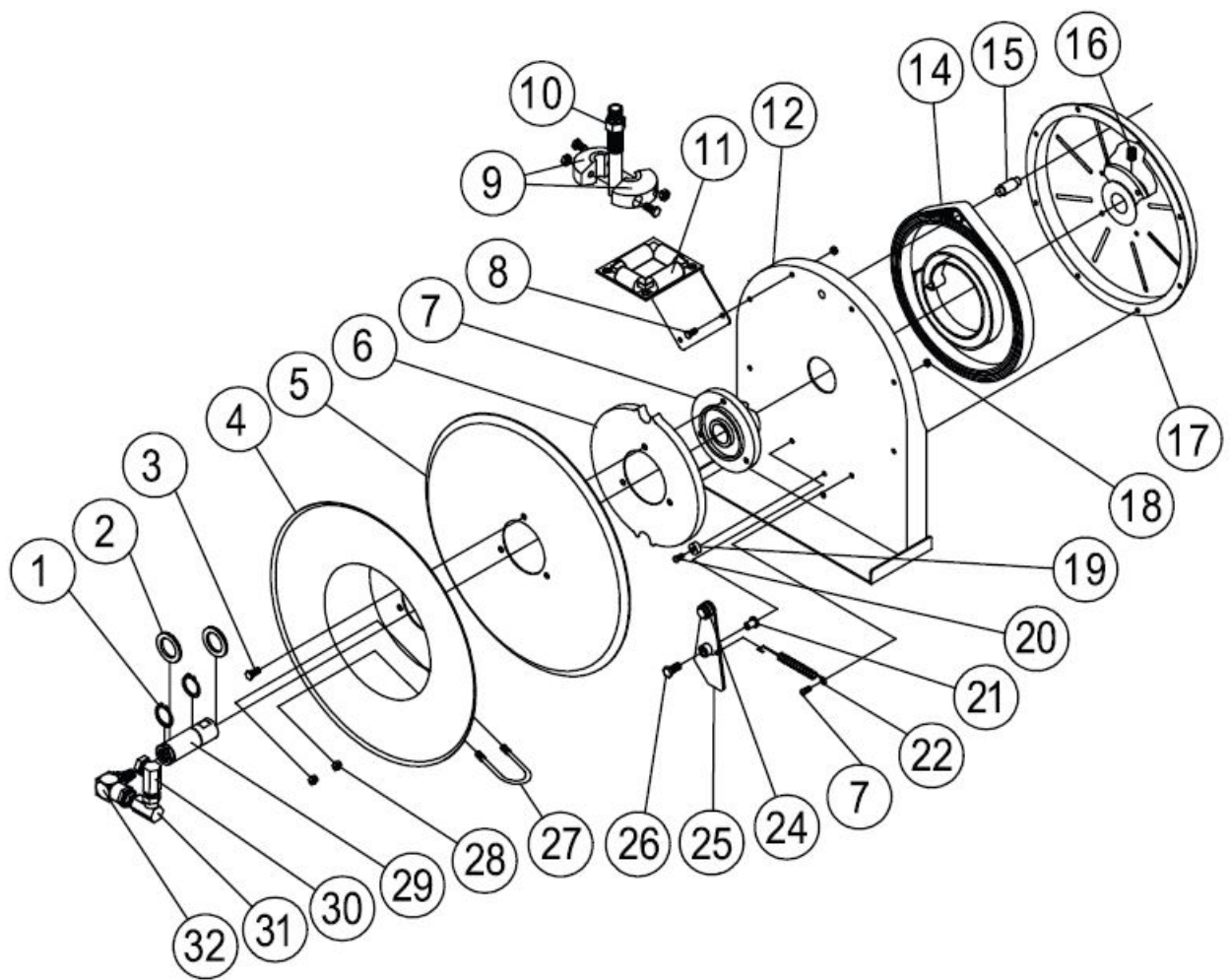
REPAIRS:

Extensive repairs should be performed only by an authorized serviceman or factory to avoid damage that may void your warranty. Remove all spring tension before beginning the disassembly process.

Product Usage

1. Mount the hose reel securely on a flat surface using the appropriate hardware.
2. Connect a flexible hose between the hose reel inlet and the source of supply.
3. Insert the high-pressure hose through the roller guide and connect it to the swivel joint.
4. Adjust the spring tension as per the required pressure and tension.
5. Use the hose as required and rewind it back onto the reel using the handle provided.
6. In case of any maintenance or repairs, remove all spring tension before disassembling the hose reel and performing the necessary steps as per the product manual.

Part List



Item #	Part #	# Req.	Description	Item #	Part #	# Req.	Description	Item #	Part #	# Req.	Description
1	300031	2	1" Snap Ring	12	500101	1	Base Assembly	22	S400018	1	Latch Spring
2	300034	2	Spacing Washer	14	S505740	1	Drive Spring Assembly	24	400020	1	O-ring
3	S295-102	3	1/4 Plastite Hex Screw	15	S261360	1	Spring Case Stud	25	S400109	1	Latch Plate Assembly
4	260022	1	Flange Assembly	16	300006	1	3/8-16 x 1/2" Set Screw	26	300035	1	10-32 x 1" Screw
5	500006	1	Sheave Disk	17	S500103	1	Spring Case Assembly	27	3-117440	1	1/4" U-bolt
6	S500019	1	Latch Cam	18	S82-15	8	#10-32 Nyloc Nut	28	261650-1	2	1/4-20 Zinc Nyloc Nut
7	S260648	2	Spring Arbor	19	S400021	1	Latch Bumper	29	602306	1	Mainshaft
8	300002	7	10-32 x 1/2" Screw	20	S32-136	1	10-32 x 3/8" Screw	32	600602-1	1	Swivel Assembly
11	S500107	1	Guide Arm Assembly	21	S400012	1	Latch Bushing				

Item #	Description	# Req.	5400 OHP	5420 OHP	5430 OHP	5600 OHP	5625 OHP
9	Bumper Stop Assembly	1	None	1-HR1004	1-HR1004	None	S602452
10	Hose Assembly	1	None	6-260044	7-260044	None	13-260044
30	Swivel Union	1	S257-2	S257-2	S257-2	S257-2	S257-2
31	Swivel Union	1	S257-2	S257-2	S257-2	S257-2	S257-2
Hose I.D. & Length			None	1/4" x 20'	1/4" x 30'	None	3/8" x 25'
Reel Inlet Connection			1/4" F.P.T.	1/4" F.P.T.	1/4" F.P.T.	1/4" F.P.T.	1/4" F.P.T.
Max. Operating Pressure			5000 PSI	5000 PSI	5000 PSI	5000 PSI	4800 PSI
Max Operating Temperature			210 °F	210 °F	210 °F	210 °F	210 °F

Reelcraft Industries, Inc.

2842 E-Business Hwy 30, Columbia City, IN 46725

Ph: 800-444-3134 / 260-248-8188

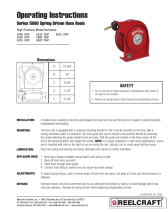
Fax: 800-444-4587 / 260-248-2605

Customer Service: 855-634-9109

reelcraft@reelcraft.com

www.reelcraft.com.

Documents / Resources

	<p>REELCRAFT 5000 Spring Driven Hose Reels [pdf] User Manual 5000 Spring Driven Hose Reels, 5000, Spring Driven Hose ReelsHose Reels</p>
---	--

References

- [Reelcraft Industries - Hose, Cord, and Cable Reels](#)