



# REELCRAFT 5000 Series Spring Driven Hose Reels Instruction Manual

[Home](#) » [REELCRAFT](#) » REELCRAFT 5000 Series Spring Driven Hose Reels Instruction Manual 

## Contents

- [1 REELCRAFT 5000 Series Spring Driven Hose Reels](#)
- [2 SAFETY](#)
- [3 Dimensions](#)
- [4 INSTALLATION](#)
- [5 MOUNTING](#)
  - [5.1 LUBRICATION](#)
- [6 REPLACING HOSE](#)
- [7 Documents / Resources](#)
  - [7.1 References](#)
- [8 Related Posts](#)

# REELCRAFT

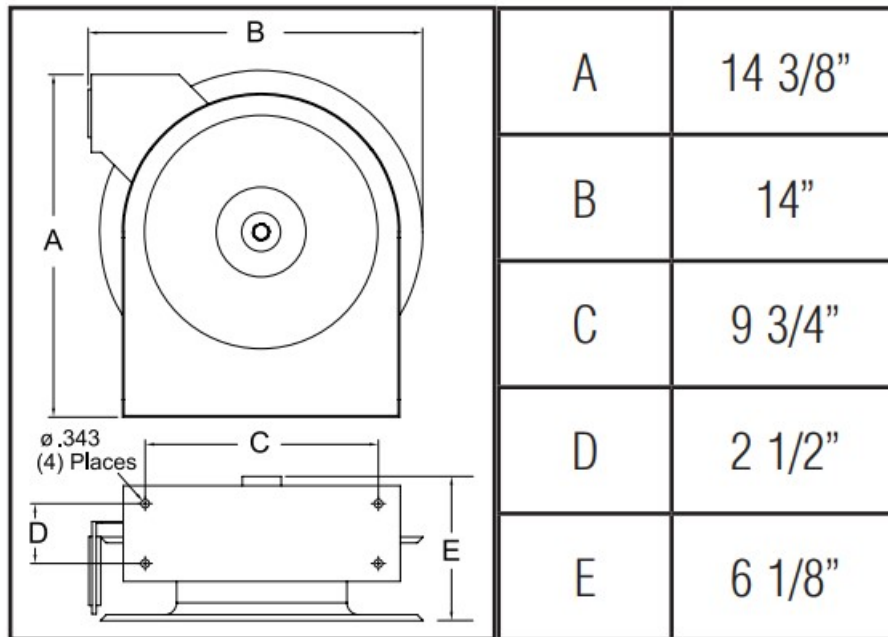
## REELCRAFT 5000 Series Spring Driven Hose Reels



## SAFETY

1. Do not use reel at higher pressures or temperatures than listed on the back of this bulletin.
2. Remove all spring tension before beginning dissassembly process.

## Dimensions



## INSTALLATION

A flexible hose connection must be used between the hose reel inlet and the source of supply to prevent possible misalignment and binding.

## MOUNTING

The hose reel is equipped with a universal mounting bracket so that it can be mounted on the floor, wall or ceiling; whichever place is convenient. The hose guide arm can be moved to the position desired by removing the screws fastening the guide bracket to the reel base. Shift the guide arm bracket so the hose comes off the reel at the desired position and replace the screws.

**NOTE:** For proper installation in wall mount applications, ensure reel is mounted with inlet on the right as you are facing the reel. Failing to do so could cause latching issues.

## LUBRICATION

Hose reel spring and bearings are factory lubricated and require no further lubrication.

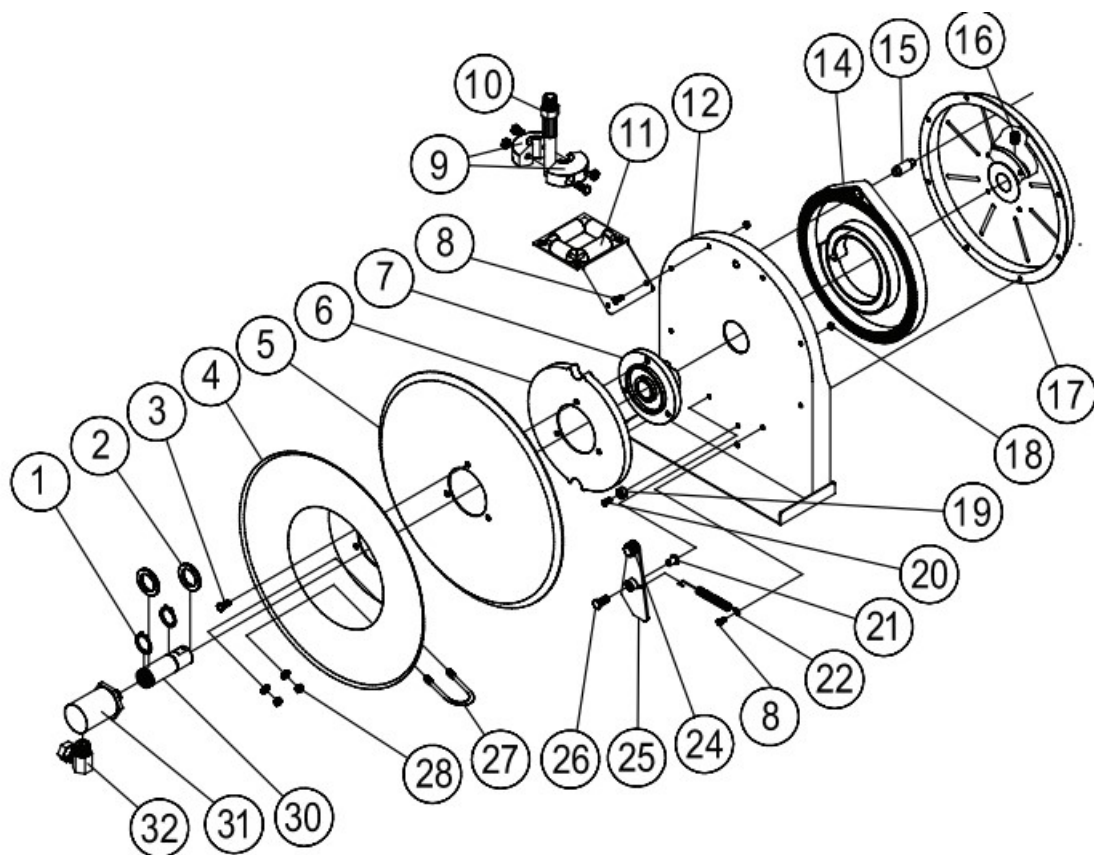
## REPLACING HOSE

1. Wind spool flange clockwise-facing swivel-until spring is tight.
2. Back off three turns and latch.
3. Insert hose through roller guide.
4. Connect hose fitting to swivel joint and secure hose with clamps.

**ADJUSTMENTS:** To adjust spring tension, add or remove wraps of hose from the spool, one wrap at a time until

desired tension is obtained.

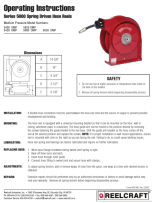
**REPAIRS:** Extensive repairs should be performed only by an authorized serviceman or factory to avoid damage which may void your warranty. Remove all spring tension before beginning disassembly process.



Item #	Part #	# Req.	Description	Item #	Part #	# Req.	Description	Item #	Part #	# Req.	Description
1	300031	2	1" Snap Ring	11	S500107	1	Guide Arm Assembly	21	S400012	1	Latch Bushing
2	300034	2	Spacing Washer	12	500101	1	Base Assembly	22	S400018	1	Latch Spring
3	S295-102	3	1/4-10 x 5/8" Self Tapping Screw	15	S261360	1	Spring Case Stud	24	400020	1	O-ring
4	260022	1	Sheave Flange	16	300006	1	3/8-16 x 1/2" Set Screw	25	S400109	1	Latch Plate Assembly
5	500006	1	Sheave Disk	17	S500103	1	Spring Case & Hub Assembly	26	300035	1	10-32 x 1" Machine Screw
6	S500019	1	Latch Cam	18	S82-15	8	10-32 x 3/8" Nyloc Nut	27	3-117440	1	U-bolt Hose Clamp
7	S260648	2	Spring Arbor	19	S400021	1	Latch Plate Bumper	28	261650-1	2	1/4-20 Nyloc Nut
8	300002	7	10-32 x 1/2" Machine Screw	20	S32-136	1	10-24 x 3/8" Self Tapping Screw	30	602305	1	Main Shaft

Item #	Description	# Req.	5400 OMP	5420 OMP	5600 OMP	5620 OMP	5630 OMP
9	Bumper Stop Assembly	1	None	1-HR1004-A	None	1-HR1004-3	1-HR1004-3
10	Hose Assembly	1	None	13-260043	None	15-260043	16-260043
14	Drive Spring	1	S505740	S505740	S505740	S503755	S505740
31	Swivel Assembly	1	S600886	602032	602032	602032	602032
32	Swivel Union	1	None	S257-25	S257-25	S257-25	S257-25
Hose I.D. and Length			None	1/4" x 20'	None	3/8" x 20'	3/8" x 30'
Reel Inlet Connection			3/8" F.P.T.	3/8" F.P.T.	3/8" F.P.T.	3/8" F.P.T.	3/8" F.P.T.
Max. Operating Pressure			3000 P.S.I.	2750 P.S.I.	3000 P.S.I.	2600 P.S.I.	2600 P.S.I.
Max. Operating Temperature			210 °F	210 °F	210 °F	210 °F	210 °F

Documents / Resources



[REELCRAFT 5000 Series Spring Driven Hose Reels](#) [pdf] Instruction Manual  
5000 Series, Spring Driven Hose Reels, 5000 Series Spring Driven Hose Reels, Driven Hose R  
eels, Hose Reels, Reels

References

-  [Reelcraft Industries - Hose, Cord, and Cable Reels](#)