

REDBACK A 1720C MP3 Message Player and Tone Generator Instruction Manual

[Home](#) » [redback](#) » REDBACK A 1720C MP3 Message Player and Tone Generator Instruction Manual 

Contents

- [1 A 1720C MP3 Message Player and Tone Generator](#)
- [2 Product Usage Instructions](#)
- [3 Installation](#)
- [4 Connections](#)
- [5 Cancel Function](#)
- [6 Emergency tones \(Alert and Evacuation\)](#)
- [7 Troubleshooting](#)
- [8 Specifications](#)
- [9 FAQ](#)
- [10 Documents / Resources](#)
 - [10.1 References](#)



A 1720C MP3 Message Player and Tone Generator



Specifications

- MP3-based message player and tone generator
- Designed for public address, security, customer direction, or emergency evacuation announcements
- **Power Input:** 12-30V
- **Audio Output:** Stereo output, Left & Right RCA outputs
- Micro SD Card Slot
- Supports MP3 format at 128kbps, 44.1kHz, 32bit, VBR or CBR, Stereo

Product Usage Instructions

Installation

Ensure connections are made as follows:

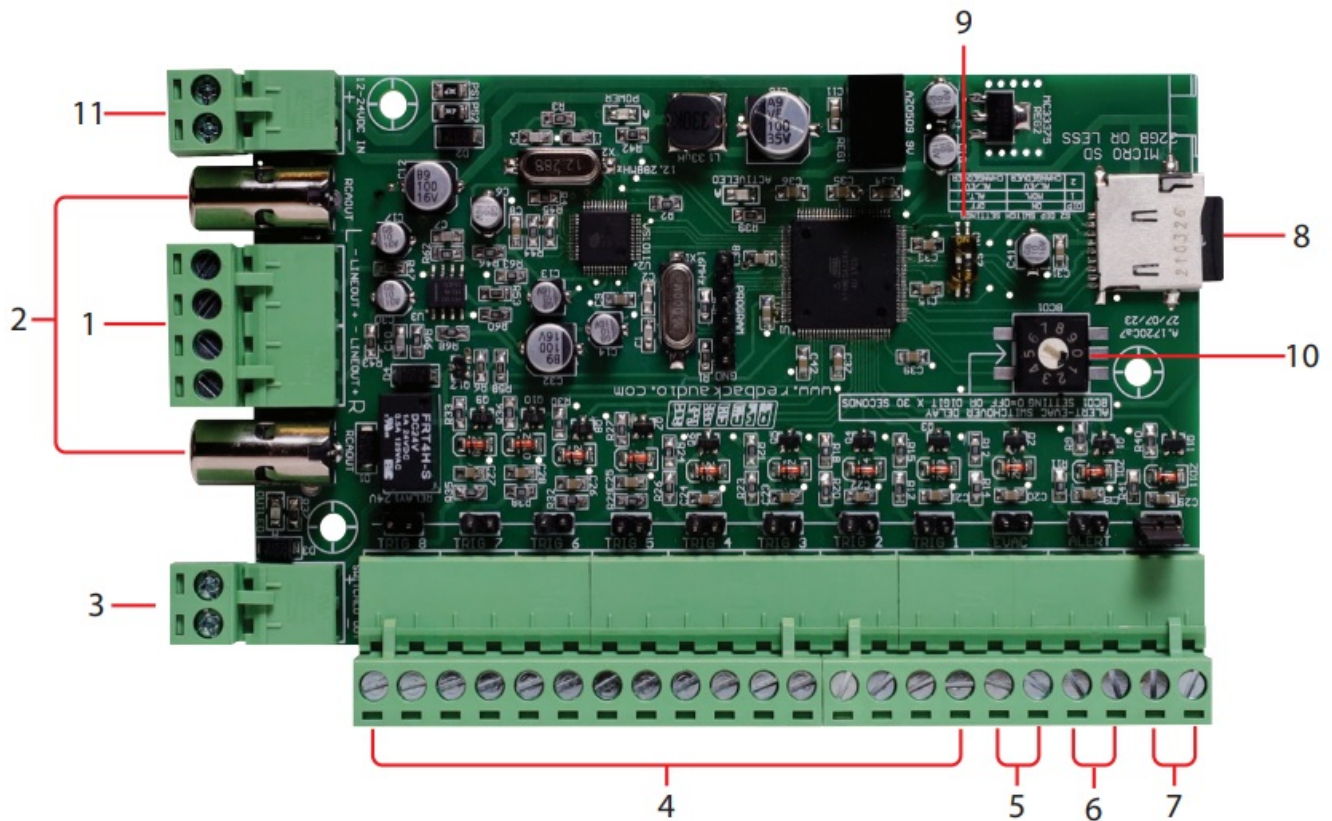


Fig 1

1. Stereo audio output
2. Left & right RCA outputs
3. Switched power output
4. Trigger 1-8 inputs
5. Evac Trigger
6. Alert Trigger
7. Cancel Trigger
8. Micro SD Card slot
9. DIP switch
10. BCD switch
11. Power input (12-30V)

Accessing Files On The Micro SD Card

To access files on the micro SD card:

- Locate the folder labeled #LIBRARY# on the micro SD card.
- This folder contains sample tones and messages for triggerMP3s.

The A 1720C is an MP3-based message player and tone generator designed for public address, security, customer direction or emergency evacuation announcements.

Installation

- **Power requirements:** The A 1720C needs a minimum of 12VDC at 300mA to work correctly (Note: a minimum

of 24V DC is needed if the switched output is required). Do not exceed the maximum working voltage of 30VDC, as it will cause permanent damage to the unit. A good working voltage is between 12 and 24VDC. The power is connected via 2-way screw terminal (see fig 1).

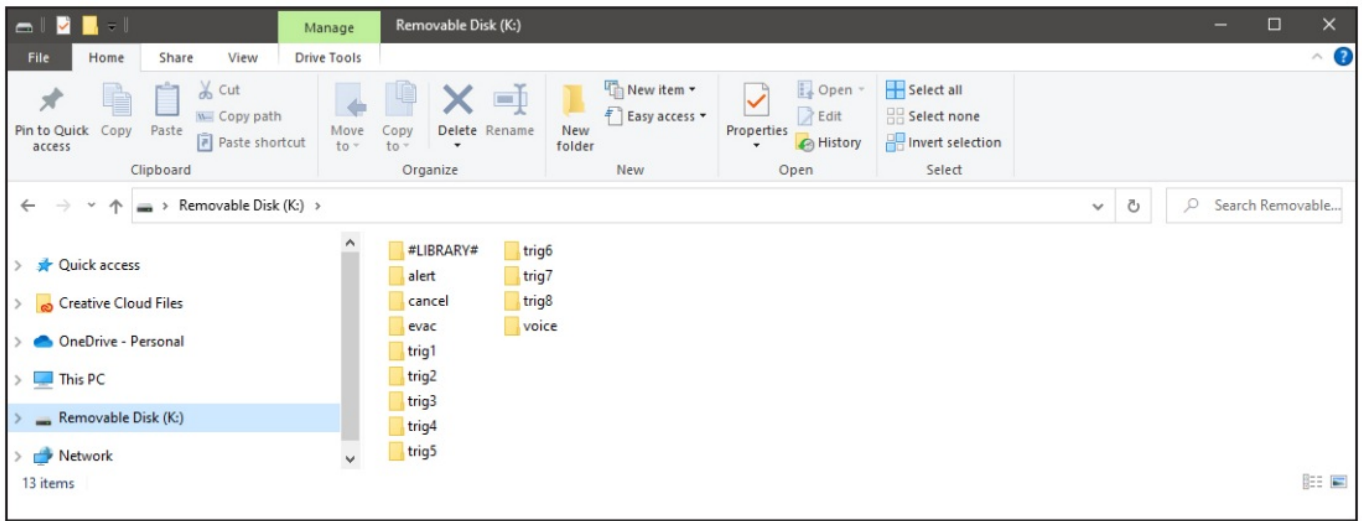
- **Output:** Stereo output is via screw terminals and RCA sockets. The output level is a nominal 500mV but is related to the recorded level of the MP3.
- **Input triggers:** The input triggers are activated by closing contacts whether by a normally open switch or a timer or controller.
- **Switched output:** The switched output terminal is triggered when any zone is activated. Note: A minimum of 24VDC must be used to power the A 1720C for the switched output to operate. The voltage output from the switched output terminals is the same as the power supplied to the unit.

Connections

1. Stereo audio output
2. Left & right RCA outputs
3. Switched power output
4. Trigger 1-8 inputs
5. Evac Trigger
6. Alert Trigger
7. Cancel Trigger
8. Micro SD Card slot
9. DIP switch
10. BCD switch
11. Power input (12- 30V)

Accessing Files On The Micro Sd Card

- Remove power from the A 1720C and then remove the micro SD card from the unit.
- To remove the micro SD card push the card in and it will eject itself.
- The micro SD card will then need to be connected to a PC. You will need a PC equipped with a micro SD card reader to do this (not supplied). If a Micro SD slot is not available then the Redback D 0371C USB Memory Card Reader or similar would be suitable (not supplied).
- Make sure the PC is on and the card reader is connected and correctly installed. Then insert the micro SD card into the reader. Go to "My Computer" or "This PC" and open the micro SD card which is usually marked "Removable disk".
- In this case, it is named "Removable disk (K:)". Click on the Removable disk and the contents of the micro SD card should be listed as shown in figure 2.



Included on the micro SD card is a folder labeled #LIBRARY# (shown in Figure 3) which includes a collection of sample tones and messages that can be used for the trigger MP3s.

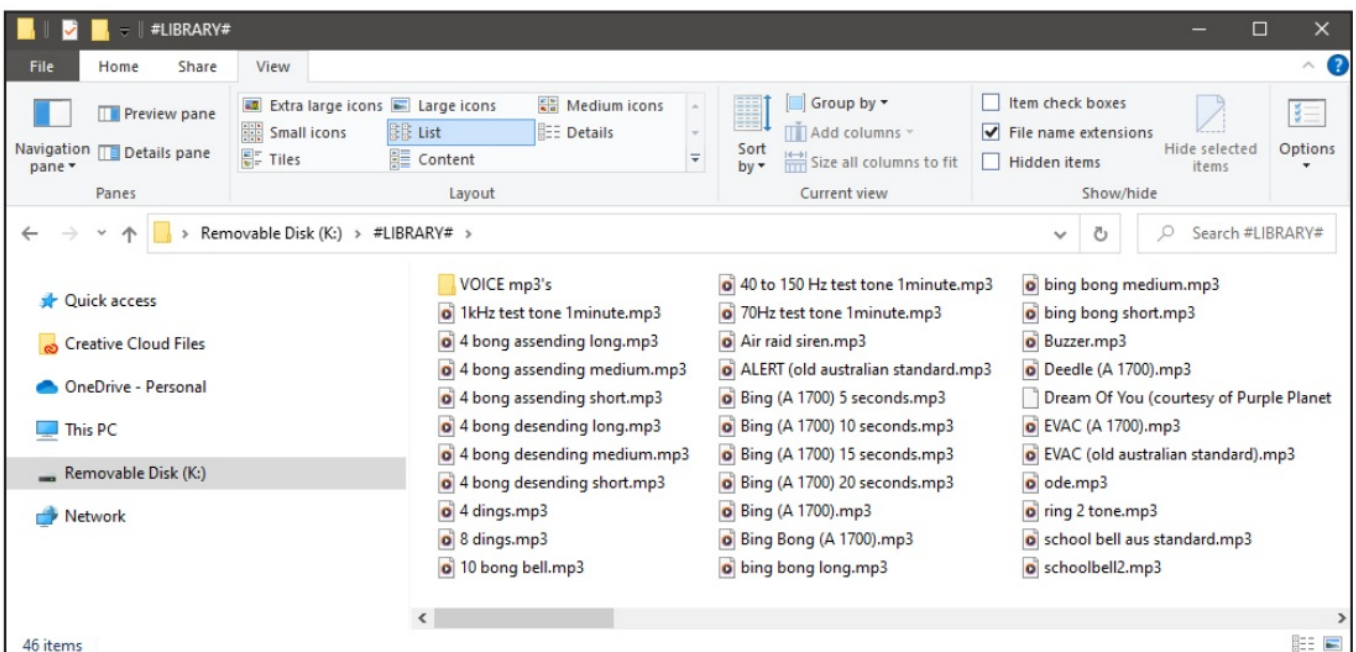


Fig 3

Installing MP3 files into trigger folders

To open a trigger folder simply double-click on the relevant folder, such as our example of the trig2 folder shown in Figure 4. Inside the folder will be a default MP3 file, named in this case “trigger2.mp3”. This is the audio file that is played when trigger 2 is activated. Delete this file and replace it with an MP3 file you want to play when you activate trigger2. This MP3 could be a file from the #library# folder or an MP3 of your choosing. The MP3 file name is not important only that there is a legitimate MP3 file in the trig2 folder (WAV, OGG, or other formats do not work). Repeat this process for the required triggers.

Note: More than one MP3 file can be placed in the trigger folders. These will be played randomly while the trigger is activated.

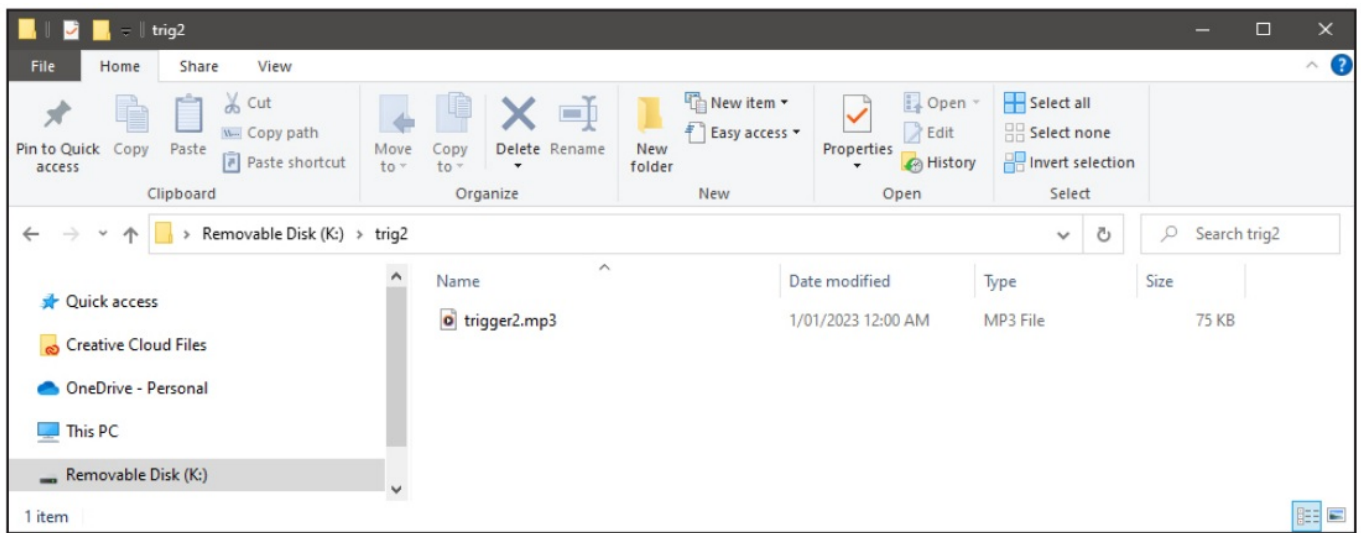


Fig 4

MP3 file format

The audio files used must be in MP3 format, they cannot be WAV, OGG or other formats. The minimum recommended MP3 format is 128kbps, 44.1kHz, 32bit, VBR or CBR, Stereo (even better as mono).

NOTE: the MP3 files used cannot be “Read-only”. To check this, right-click on the MP3 file and scroll down and select Properties, you will get a popup window. Make sure the “Read Only” box has no tick in it.

Alert and Evac Messages

A message can be inserted every three alert cycles and/or every three evac cycles. A Voice message could be something like “Please evacuate the building”. To install an Alert or Evac message open the “voice” folder and then select the alert or evac folder. Figure 5 illustrates the location of the voice/evac folder. Delete the file in the folder and replace it with an MP3 message file you want to play when you activate the alert or evac. This MP3 could be a file from the #library# folder or an MP3 of your own choosing.

Note: If an Alert or Evac message is not required delete the files in these folders.

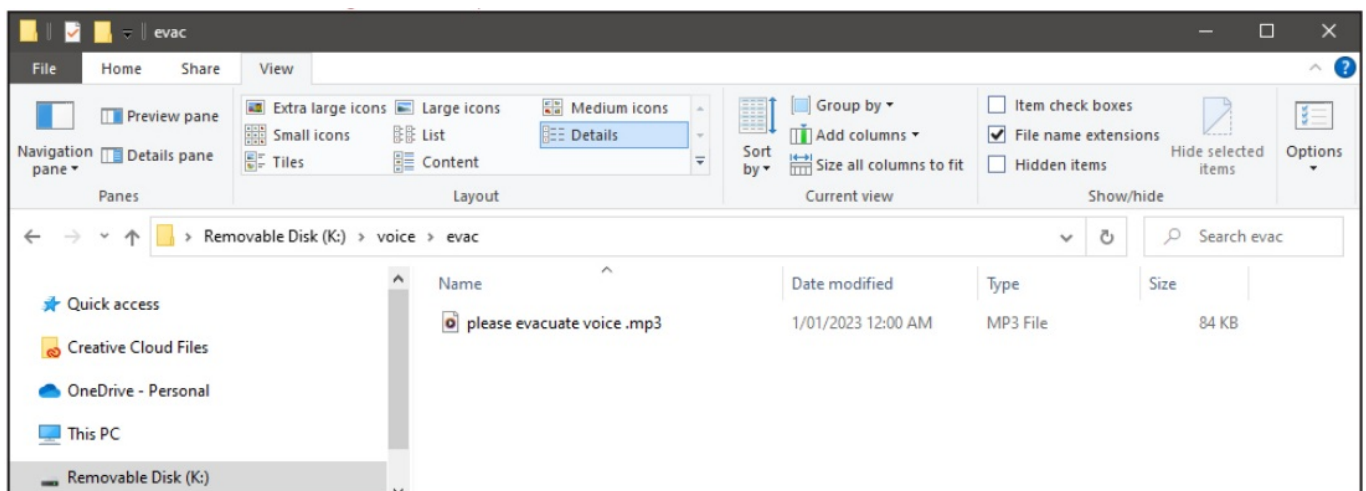


Fig 5

Play modes

Alternate: When the A 1720C is in Alternate mode (DIP switch 1 OFF) (see Fig 1) a momentary closing contact or pulse on the trigger pins will activate the associated trigger folder MP3. The A 1720C will continue to play the MP3 until it finishes and will then stop playing. If the contact is held closed continually the MP3 will continue to loop over

and over, or if there are multiple MP3 files in the trigger folder, they will be played randomly until the contact is released.

To stop an MP3 playing when in Alternate mode the Cancel trigger is used. A momentary closing contact on the Cancel trigger will stop the MP3 playing (It is recommended that the Cancel contact be held for up to 2 seconds to ensure the MP3 stops playing).

Momentary: In momentary mode (DIP switch 1 ON) (see Fig 1) the closing contact must be held for the duration of the MP3 play time, if it is released before the MP3 ends the MP3 will stop playing immediately. If the contact is held closed continually the MP3 will still only play once and then stop. If there are multiple MP3 files in the trigger folder, a file will be selected at random and played once.

Cancel Function

As outlined in the Alternate Playback mode, the cancel trigger can be used to cancel any activated trigger. The A 1720C now includes a new function, which when configured can play an MP3 file on cancellation of a trigger, in Alternate Playback mode only. On the micro SD card is a folder labeled "cancel" and inside this folder are the alert, evac, and trigger folders. To configure the unit for MP3 playback on trigger 3 cancellation for example, an MP3 file must be placed in the trig3 folder (location K:\cancel\trig3).

Emergency tones (Alert and Evacuation)

The Alert and evacuation tones conform to Australian Standards AS1670.4 and are used to notify building occupants of an emergency. Set DIP switch 2 to ON to activate the emergency tones.

- **Alert:** The Alert tone is activated by a closing contact on the ALERT trigger (Trigger10) and can be used in Alternate or Momentary setups as outlined in section 3.0. The Alert tone comes with a changeover option which forces the A 1720C to switch from Alert to the Evacuation tone after a prescribed time. Use the BCD switch to adjust this time or switch off completely (see Figure 6). Power down the A 1720C for the changes to take effect.
- **Evacuation:** The Evacuation tone is activated by a closing contact on the Evac trigger (Trigger9) and can be used in an Alternate or Momentary setup as mentioned in section 3.0.
- **Alert and Evacuation messages:** A message can be inserted every three alert cycles and/or every three evac cycles. Refer to section 2.3 for more details.
- **Priority:** The Emergency tones have priority over other triggers (1 to 8) and if activated will stop any other MP3, and activate the selected emergency tone. Evacuation also has priority over Alert.

BCD POSITION	SWITCH-OVER TIME (Sec)
0	OFF
1	30
2	60
3	90
4	120
5	150
6	180
7	210
8	240
9	270

Fig 6.

Troubleshooting

- NO Power (Power LED does not illuminate):
- Make sure the power supply voltage is 12-30VDC.
- Make sure the power supply is a DC input, not AC.
- Emergency tones do not work:
- Switch DIP1 switch 2 ON to activate emergency tones.

Specifications

- **Power supply:**12VDC to 30VDC 300mA (idle/maximum current draw 50mA)
- **Output:**
.....Stereo RCA
500mV nominal
- **Micro SD Card size:**
.....256MB to 32GB
- **Trigger Activation:**
.....Closing contact

MP3 info

- **Bit rate:**All standard MP3 rates (128kbps recommended)
- **Sample rate:**All standard MP3 rates (44kHz recommended)

- **Channels:**

.....
Stereo or mono

- **Switched Output Current Draw:**

..... 200mA Maximum

FAQ

Frequently Asked Questions

- **Q: What file format is supported for audio files?**

- A: The audio files used must be in MP3 format. WAV, OGG, and other formats are not supported.

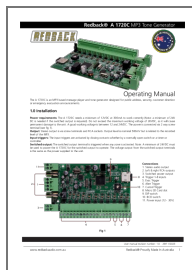
- **Q: How to activate emergency tones?**

- A: Set DIP switch 2 to ON to activate the emergency tones conforming to Australian Standards AS1670.4.

Specification s subject to change without notice.

www.redbackaudio.com.au

Documents / Resources



[REDBACK A 1720C MP3 Message Player and Tone Generator](#) [pdf] Instruction Manual
A 1720C MP3 Message Player and Tone Generator, A 1720C, MP3 Message Player and Tone Generator, Player and Tone Generator, Tone Generator, Generator

References

- redbackaudio.com - Crazy Domains
- [User Manual](#)

[Manuals+.](#) [Privacy Policy](#)

This website is an independent publication and is neither affiliated with nor endorsed by any of the trademark owners. The "Bluetooth®" word mark and logos are registered trademarks owned by Bluetooth SIG, Inc. The "Wi-Fi®" word mark and logos are registered trademarks owned by the Wi-Fi Alliance. Any use of these marks on this website does not imply any affiliation with or endorsement.