
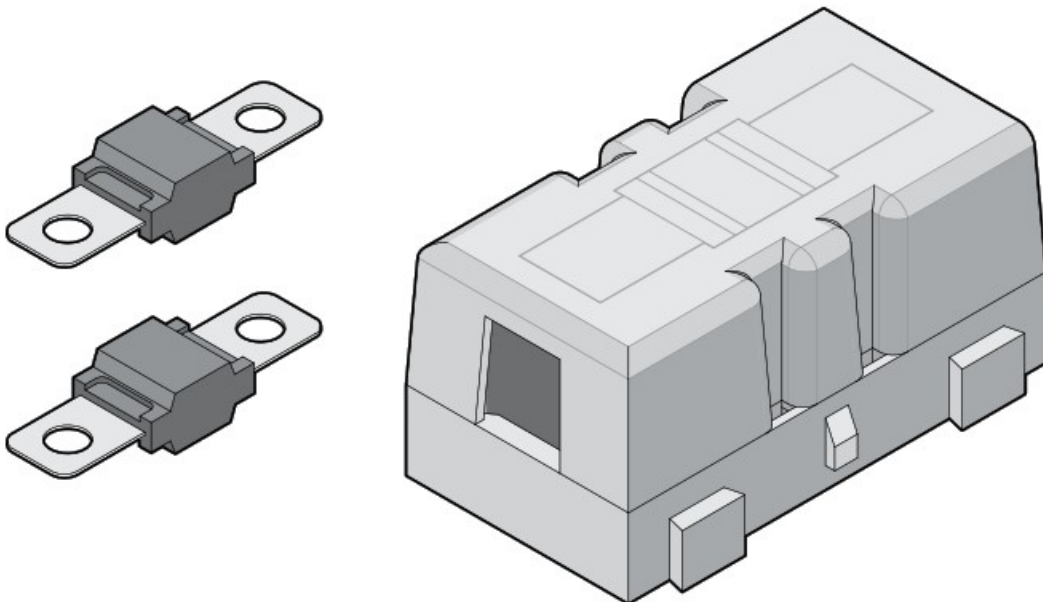


REDARC FK23 23A MIDI Fuse Kit Instruction Manual

[Home](#) » [REDARC](#) » REDARC FK23 23A MIDI Fuse Kit Instruction Manual 



23A MIDI Fuse Kit
FK23



Contents

[1 23A MIDI FUSE KIT](#)

[2 KIT CONTENTS](#)

[3 LIMITED WARRANTY](#)

[4 LUG AND HEATSHRINK ASSEMBLY](#)

[5 FUSE KIT ASSEMBLY](#)

[6 BCDC1212T INSTALLATION](#)

[7 CONTACT](#)

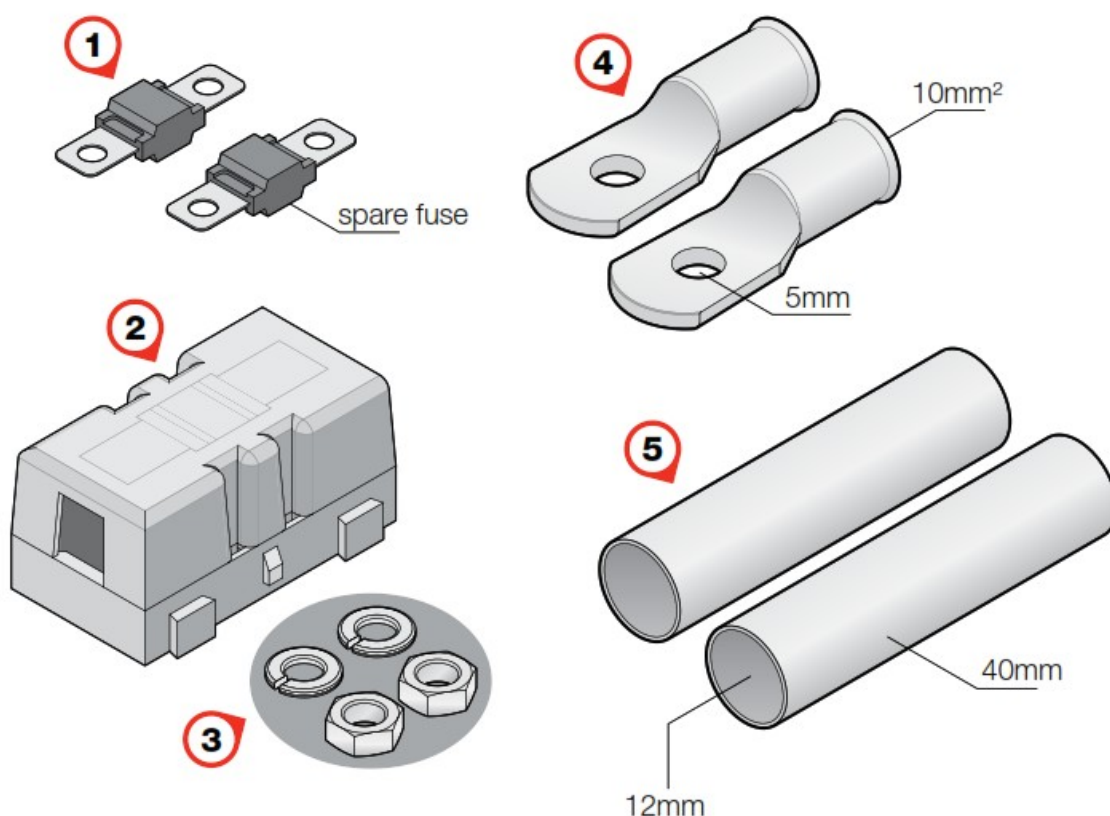
[8 Documents / Resources](#)

[8.1 References](#)

[9 Related Posts](#)

23A MIDI FUSE KIT

The FK23 is designed to provide for a simple, neat fuse installation for dual battery systems. The FK23 is perfect for the BCDC1212T start battery input connection.



KIT CONTENTS

No.	Part	Quantity
1	23 A MIDI Fuse	2
2	Fuse Holder	1
3	Nut and Spring Washer to suit Fuse Holder	2
4	Lug*	2
5	Heatshrink	2

*The Lugs provided are intended for a 10 mm² cable. If using a smaller cable gauge, insert with conductor foldback; if using larger cable gauge, source a larger lug.

LIMITED WARRANTY

For full warranty terms and conditions, visit the Warranty page of the REDARC website.

www.redarcelectronics.com/warranty

Australia, New Zealand & Europe

REDARC Electronics Pty Ltd
23 Brodie Road (North),
Lonsdale SA 5160
Australia

Australia +61 8 8322 4848

New Zealand +64 9 222 1024

UK & Europe +44 (0)20 3930 8109

North America

REDARC Corporation c/o Shallco, Inc.
308 Component Dr. Smithfield, NC 27577 USA

USA +1 (704) 247 5150

Canada +1 (604) 260 5512




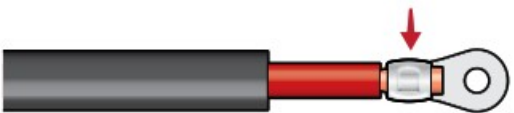


Mexico +52 (558) 526 2898

Design and specifications are subject to change without notice.

Copyright © 2022 REDARC Electronics Pty Ltd. All rights reserved.

REDARC® and THE POWER OF REDARC® are trademarks of REDARC Electronics Pty Ltd.

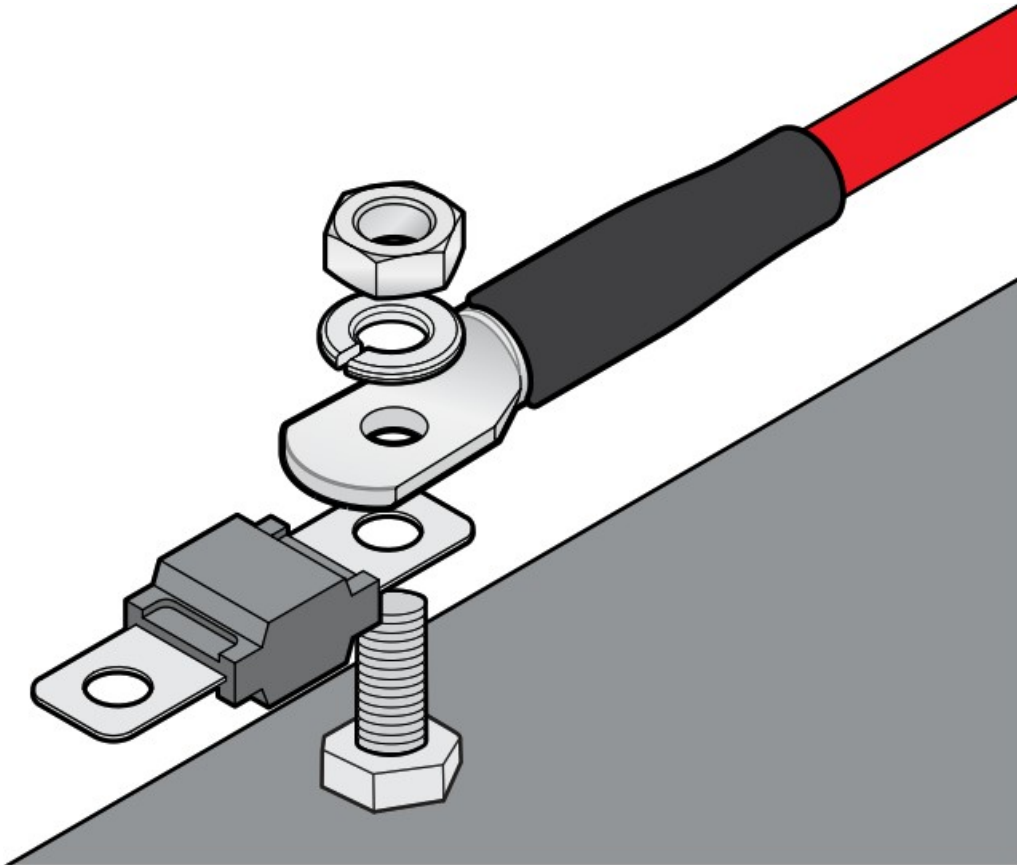
LUG AND HEATSHRINK ASSEMBLY

Strip the end of the cable back enough to ensure the insulation does not enter the barrel of the Lug when fully inserted.	
Slide the Heatshrink over the cable.	
Insert the stripped wires into the barrel of the Lug.	
Crimp the Lug using the correct crimping tool.	
Slide the Heatshrink to partially cover the Lug, leaving the Lug tongue exposed.	
Shrink the Heatshrink.	

FUSE KIT ASSEMBLY

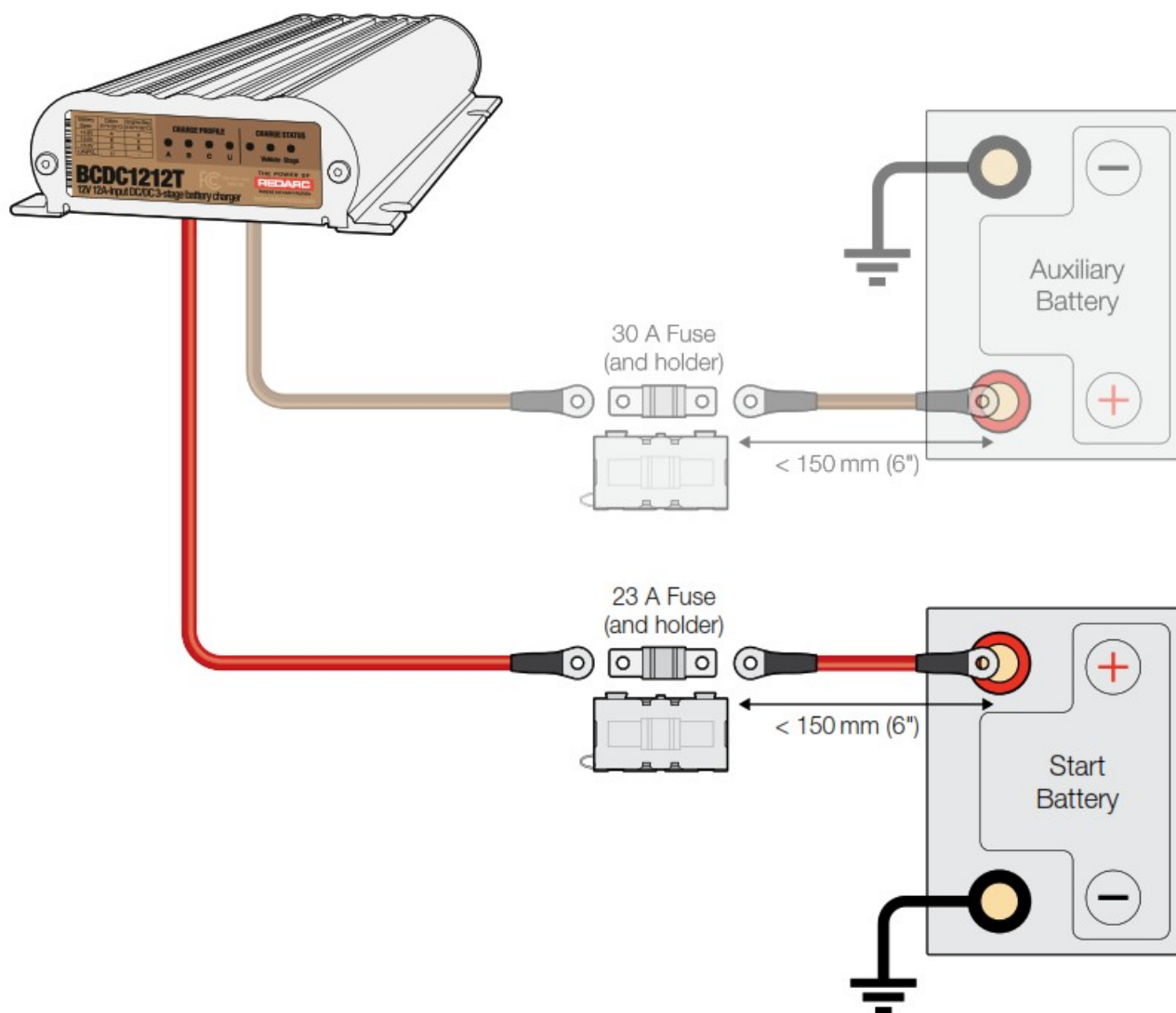
Order of installing Bolt in the Fuse Holder:

1. MIDI Fuse
2. Lug with Heatshrink and cable
3. Spring Washer
4. Nut



BCDC1212T INSTALLATION

Start Battery Input Connection



THE POWER OF
REDARC®

CONTACT

Tech Support 1300 REDARC
Head Office +61 8 8322 4848
New Zealand +64 9 222 1024
UK & Europe +44 (0)20 3930 8109
USA +1 (704) 247 5150
Canada +1 (604) 260 5512
Mexico +52 [558-526-2898](tel:558-526-2898)
redarcelectronics.com
 INST161-2 EN

Documents / Resources



[REDARC FK23 23A MIDI Fuse Kit](#) [pdf] Instruction Manual

FK23, FK23 23A MIDI Fuse Kit, 23A MIDI Fuse Kit, MIDI Fuse Kit, Fuse Kit, Kit

References

- [REDARC : Automotive Electronics, DC Charging & Brake Control](#)
- [Product Warranty Details– REDARC](#)
- [User Manual](#)

[Manuals+](#), [Privacy Policy](#)

This website is an independent publication and is neither affiliated with nor endorsed by any of the trademark owners. The "Bluetooth®" word mark and logos are registered trademarks owned by Bluetooth SIG, Inc. The "Wi-Fi®" word mark and logos are registered trademarks owned by the Wi-Fi Alliance. Any use of these marks on this website does not imply any affiliation with or endorsement.