



## Red Fox 2 CNC Router Installation Guide

[Home](#) » [Red Fox](#) » Red Fox 2 CNC Router Installation Guide 



### Contents

- [1 CNC Router](#)
- [2 Documents / Resources](#)
- [2.1 References](#)

### CNC Router

Thank you for purchasing a Red Fox 2 CNC router.  
Before starting work we are going to assemble the parts of the machine.  
Estimated time: 20 minutes.

#### **You will need:**

- Allen keys of #3, #5 and #6 (manual keys, please don't use an electric screwdriver)
- A clean table or support surface
- Two people at least (we recommend three people)

#### **Steps to follow:**

1. Open the packaging of the machine, take out the large foam sheet that is on the top and place it on the table to work over it.
2. When opening the machine packaging and removing the first foams and boxes, you'll see these 2 parts, the "Bridge" and the "Z axis", joined by some cables:



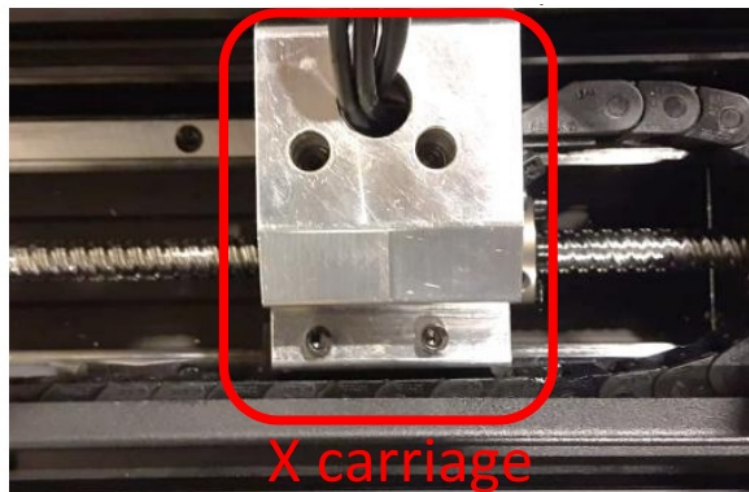
The first step of assembly is to join both pieces together.

3. Between two or three people, take the bridge and the Z axis (marked in the photo above) out of the box, and place them on the table. Please note the weight.



**Caution:** Do not move both parts away from each other to avoid damage or disconnections in the cables that join them.

4. Look for the plastic bag with four M6 screws – 16mm long, which is included in the accessories cardboard box.
5. Identify this piece of aluminum, called “X carriage”. It will be where we mount the “Z axis” in the next step.



6. Mount the “Z axis” on the “X carriage” indicated in the previous step, in this orientation:



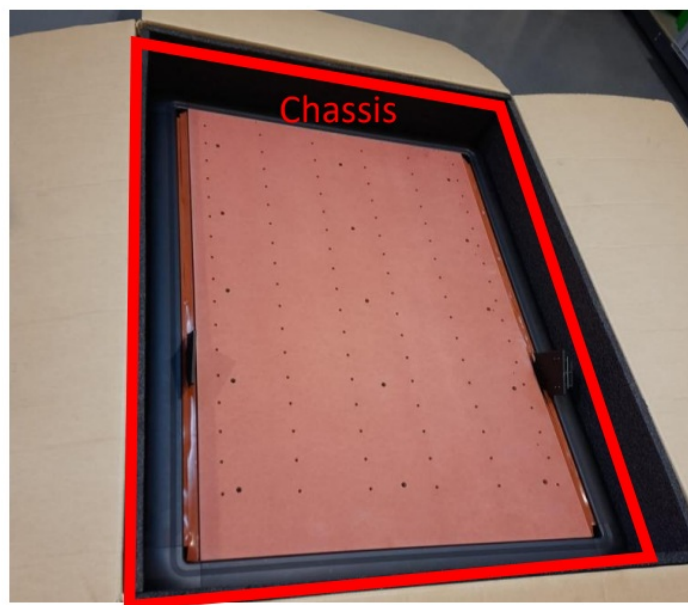
To join both parts, we will insert the four M6 – 16mm screws into the 4 threads on the X carriage, as seen in the following images:



The screws that we have just placed are also used to adjust the verticality of the Z axis ("trimming"). You can see that before tightening them, they allow the milling head to oscillate. Tight them strongly with the #5 Allen key.

Perfect! We already have completed the bridge. Put it to a side for now.

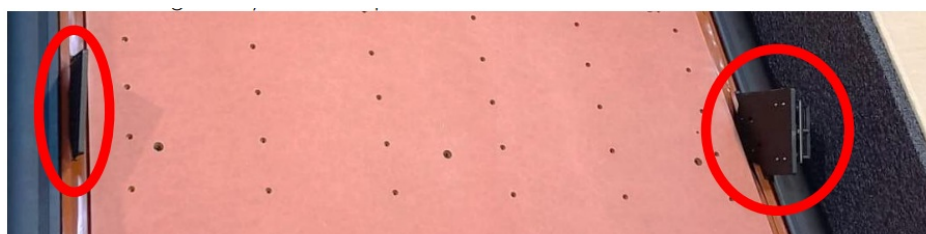
7. The next step is to mount the bridge on the machine chassis. To do this, identify the chassis of the machine in the original packaging:



And take out the chassis between three people to place it on the table.

**⚠ Caution:** The machine chassis is quite heavy and care must be taken when handling it to avoid damage to people and the machine itself.

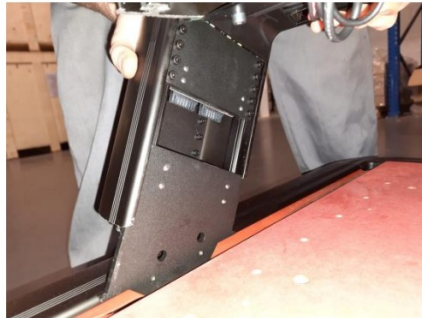
8. Identify the "Y carriages". They will be the places on the chassis where we will mount the bridge. They are these pieces:



9. Grab the previously assembled bridge between two people and insert it into the two previous "Y carriages",



which will serve as a guide. Pay attention to orientation. Observe the following images carefully.

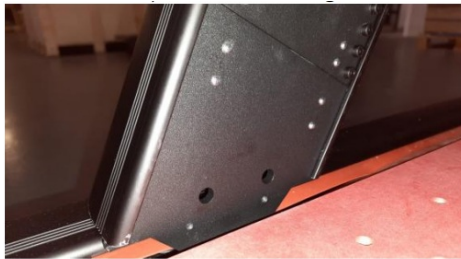


Left side



Right side

You must fully insert the bridge until there is no space, as in the following images:



10. Look for the plastic bag with four M8 screws – 65mm long, which is included in the accessories cardboard box.
11. Insert the M8 screws into the holes located at the Y carriages, looking for a thread inside them, at the end. We will begin to thread them only by hand, without force.



12. Finally, finish tightening them with the long side of the #6 Allen key, using only your hand. Please don't exert much force when tightening, just enough so that it does not move. This is important.



13. Identify the 4 rubber feet. They come in a plastic bag in the cardboard accessories box. We are going to put them in the 4 corners of the chassis, at the bottom.



14. Lift the front part of the machine with two people, and thread one of the feet into the hole in the left corner marked in the following photo:



15. Repeat the process in the other 3 corners of the machine until we have all 4 feet on. These feet are adjustable to adapt to the table where the machine will be placed.
16. Look for the tablet support included in the accessories cardboard box, and place it at the end of the tablet support arm that is in the front right corner of the machine, according to the following image:



The next steps will be for assembling the machine's dust collection system. If dust collection is not going to be

installed, they are not necessary.

17. Look for this threaded hole located in the left corner of the bridge, at the back, since we will mount the following part in it:



18. Look for the plastic clamp for the suction tube, which is found with a 16mm long M6 screw in a bag in the accessories cardboard box (see next photo to identify it).

We will place said clamp with the screw using the #5 Allen key, in the threaded hole that we indicated in the previous point, inserting the screw until the end but without tightening too much, only with the force of the hand. The clamp should be able to rotate a little. This way:



19. Insert the suction tube into the clamp so that it hangs from the left side of the machine, and put the plastic clip to improve the hold of the tube. At that end of the hanging tube we will connect our dust collector / vacuum cleaner. The clamp will rotate with the tube, it is normal.



20. Look for the plastic parts of the dust collection system, along with the four M4x16 screws that go in the same



bag. Install these parts in the machine head with the #3 wrench, placing screws in the holes marked in the right image.



21. Finally, insert the aspiration tube into the upper part of the dust collectionsystem as in the following image.



## Documents / Resources

 <small>Initial Assembly Guide</small>	<a href="#">Red Fox 2 CNC Router</a> [pdf] Installation Guide 2 CNC Router, CNC Router, Router
--	---

## References

-  [NomadTech](#)

- [User Manual](#)

[Manuals+](#), [Privacy Policy](#)

This website is an independent publication and is neither affiliated with nor endorsed by any of the trademark owners. The "Bluetooth®" word mark and logos are registered trademarks owned by Bluetooth SIG, Inc. The "Wi-Fi®" word mark and logos are registered trademarks owned by the Wi-Fi Alliance. Any use of these marks on this website does not imply any affiliation with or endorsement.