



RECON CONTROLLER User Guide

[Home](#) » [RECON](#) » RECON CONTROLLER User Guide 

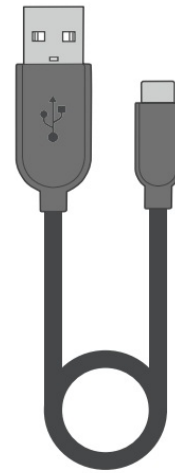


IMPORTANT: READ BEFORE USING
ANY QUESTIONS? [TURTLEBEACH.COM/SUPPORT](https://www.turtlebeach.com/support)

Contents

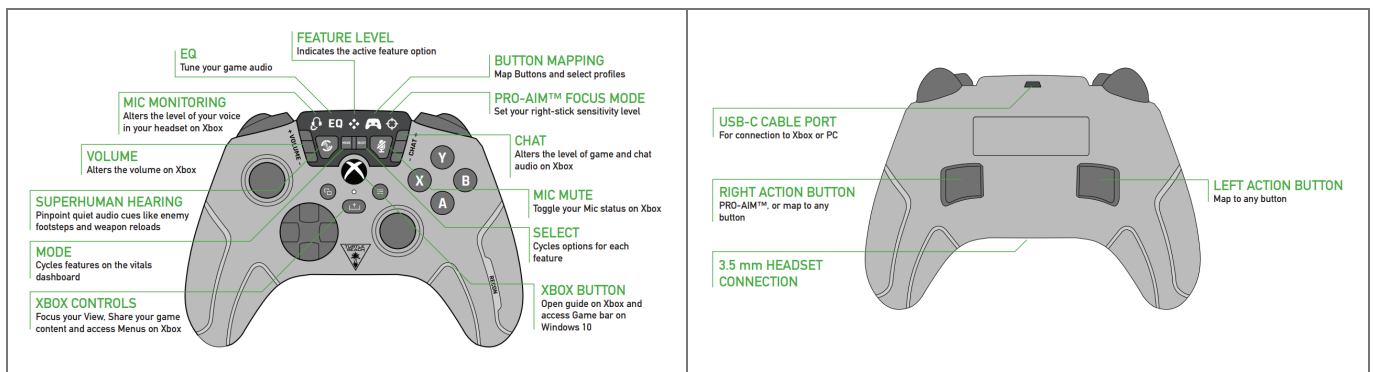
- [1 CONTENTS](#)
- [2 CONTROLS](#)
- [3 SETUP FOR XBOX](#)
- [4 SETUP FOR PC](#)
- [5 DASHBOARD STATUS](#)
- [6 QUICK-ACTION BUTTON MAPPING](#)
- [7 PRO-AIM™ FOCUS MODE](#)
- [8 TROUBLESHOOTING](#)
- [9 Documents / Resources](#)
 - [9.1 References](#)
- [10 Related Posts](#)

CONTENTS

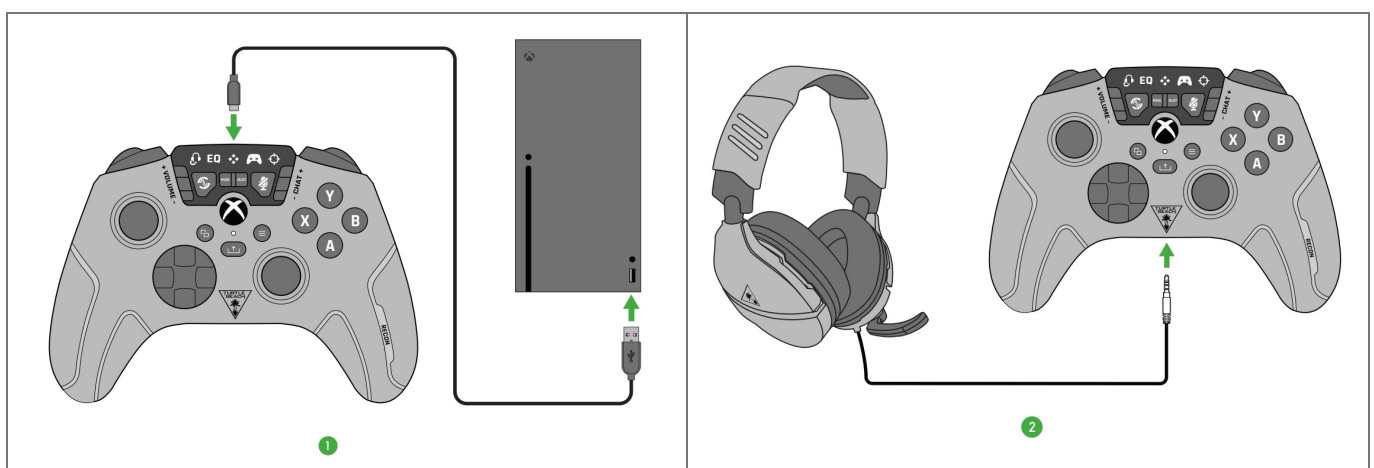


ARECON CONTROLLER B10'3 m USB-A TO USB-C CABLE

CONTROLS

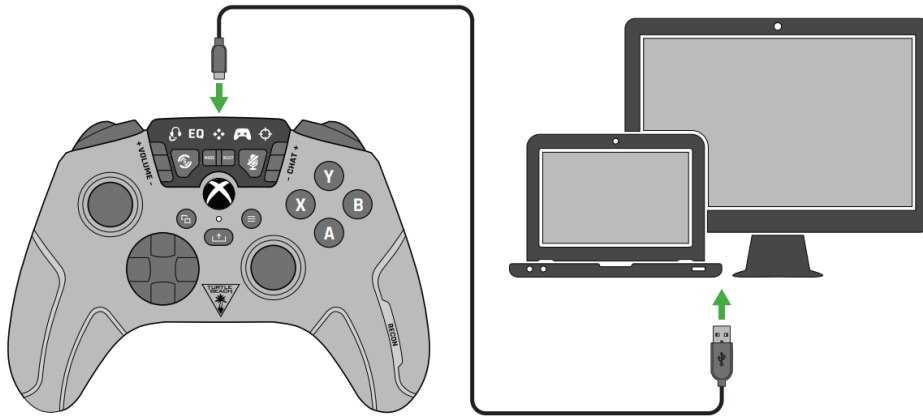


SETUP FOR XBOX



When the 3.5 mm headset is connected, Volume, Chat, Mic Monitoring, and Mic Mute alter the settings sliders on Xbox.

SETUP FOR PC












All features will work on PC except for Chat Mix when the 3.5 mm headset is connected.

DASHBOARD STATUS



- Press **mode** to cycle through features
- Press **select** to cycle through feature options

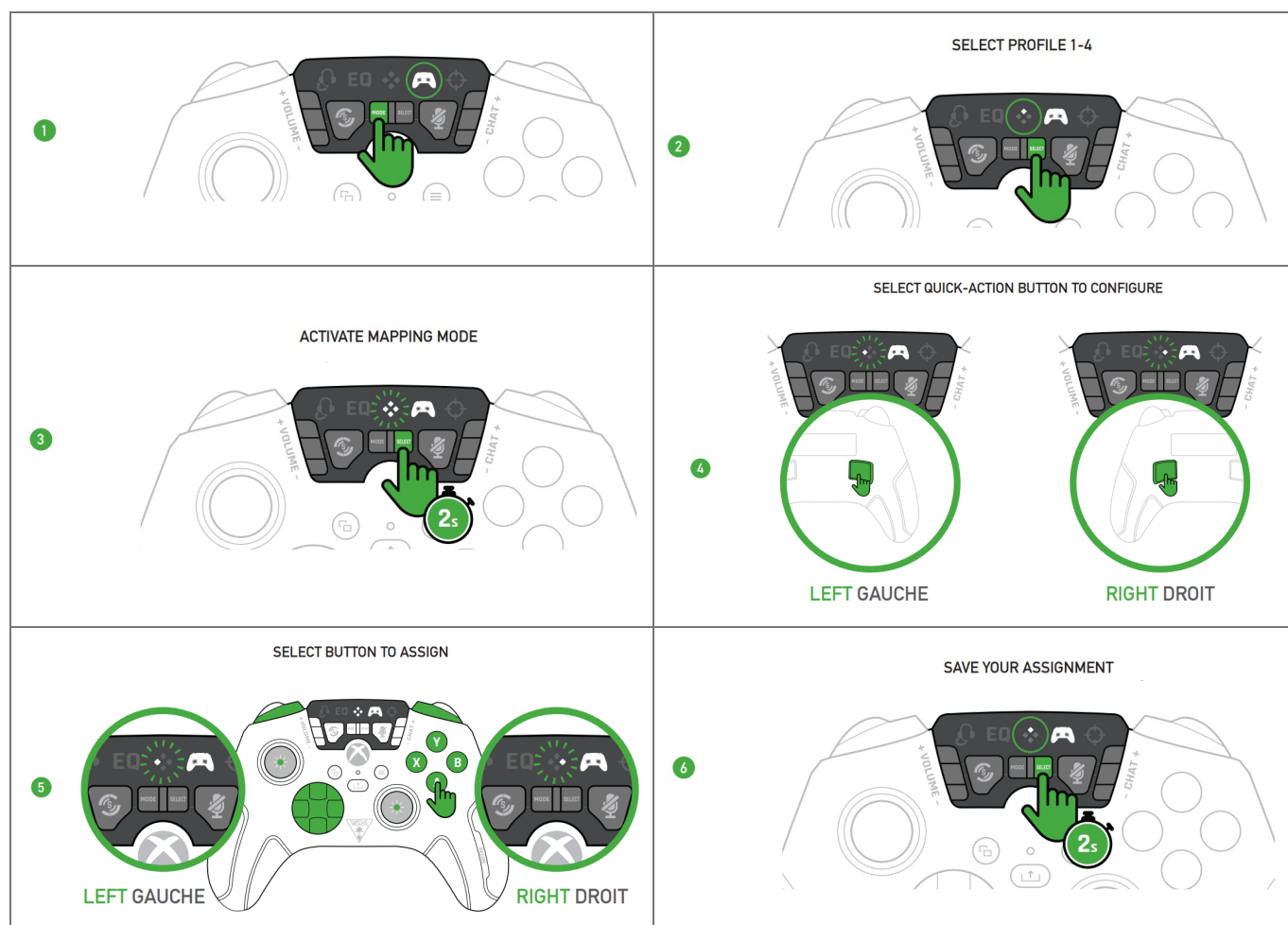
					
	OFF*	LOW	MEDIUM	HIGH	MAX.
	N/A	SIGNATURE SOUND*	BASS BOOST	BASS & TREBLE BOOST	VOCAL BOOST
	N/A	PROFILE 1*	PROFILE 2	PROFILE 3	PROFILE 4
	OFF*	LOW	MEDIUM	HIGH	MAX.

*DEFAULT

QUICK-ACTION BUTTON MAPPING



You can map any of the controller buttons to the left and right **quick-action buttons**

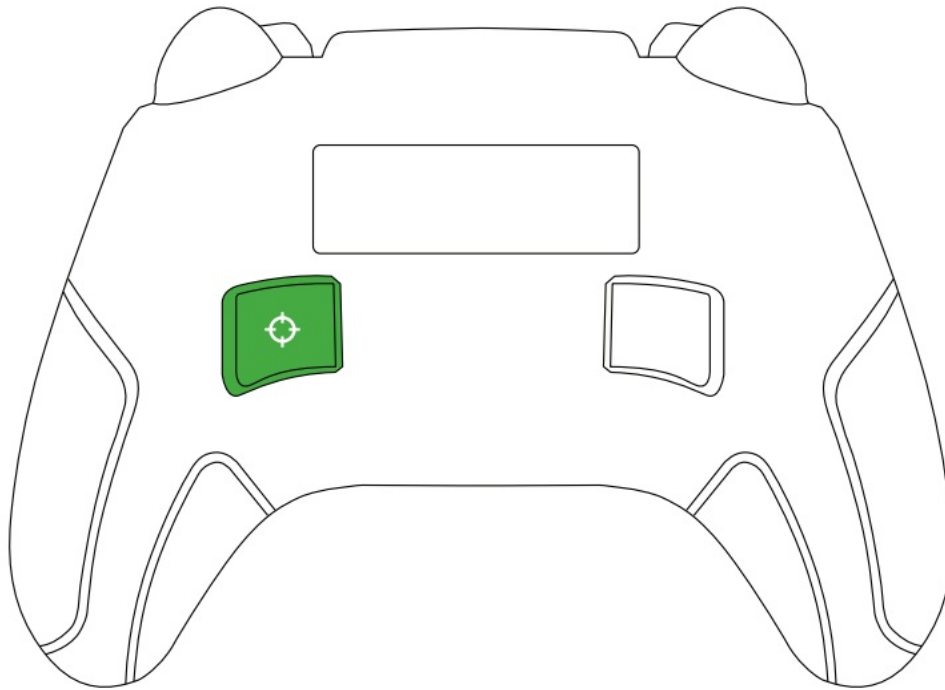


YOUR CONTROLLER IS NOW READY TO USE

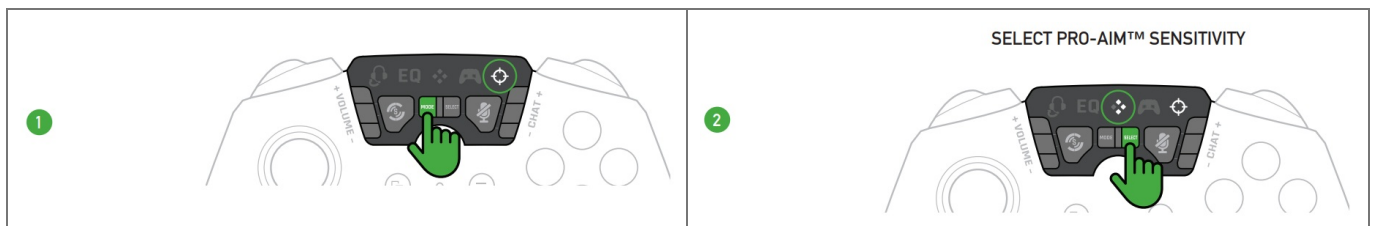
New button mappings override old ones.

To delete a button mapping, repeat the process, and at step 5, press the QUICK-ACTION BUTTON again.

PRO-AIM™ FOCUS MODE



When the **PRO-AIM™ button** is pressed and held, the sensitivity of the right stick will decrease to the set level. The higher the level, the greater the reduction in sensitivity



YOUR CONTROLLER IS NOW READY TO USE

PRO-AIM™ will work at the same time as your button mappings. Either set PRO-AIM™ to Off or clear the mapping from the right QUICK-ACTION button to achieve the setup you want.

TROUBLESHOOTING

Ensuring audio controls work correctly with your headset.

Recon acts as a dedicated audio device on your Xbox. If you have a 3.5 mm headset with integrated controls, set them to the following levels, then use Recon to tune your audio experience. Volume should be maximum, Chat mix should be balanced, the mic should be active, EQ should be the normal or flat response. Wireless headsets with or without integrated controls will not be affected by Recon audio controls.

Regulatory Compliance Statements for the RECON CONTROLLER

Federal Communications Commission (FCC) Compliance Notices

Class B Interference Statement

This equipment has been tested and found to comply with the limits for a Class B digital device, pursuant to Part 15, Subpart B of the FCC Rules. These limits are designed to provide reasonable protection against harmful interference in a residential installation. This equipment generates, uses, and can radiate radio frequency energy and, if not installed and used in accordance with the instructions, may cause harmful interference to radio communications.

However, there is no guarantee that interference will not occur in a particular installation. If this equipment does cause harmful interference to radio or television reception, which can be determined by turning the equipment off

and on, the user is encouraged to try to correct the interference by one or more of the following measures:

- Reorient or relocate the receiving antenna.
- Increase the separation between the equipment and receiver.
- Connect the equipment into an outlet on a circuit different from that to which the receiver is connected.
- Consult the dealer or an experienced radio/TV technician for help.

FCC Caution:

This device complies with Part 15 of the FCC Rules. Operation is subject to the following two conditions: (1) This device may not cause harmful interference, and (2) this device must accept any interference received, including interference that may cause undesired operation.

This product is compliant with the Consumer Product Safety Improvement Act of 2008, Public Law 110-314 (CPSIA)

WARNING: This product can expose you to chemicals that are known to the State of California to cause cancer. For more information, go to www.P65Warnings.ca.gov.

Canadian ICES Statements Canadian Department of Communications Radio Interference Regulations This digital apparatus does not exceed the Class B limits for radio noise emissions from a digital apparatus as set out in the Radio Interference Regulations of the Canadian Department of Communications. This Class B digital apparatus complies with Canadian ICES-003.

European Union and European Free Trade Association (EFTA) Regulatory Compliance Declaration of Conformity



Marking by this symbol:

indicates compliance with the Essential Requirements of the EMC Directive of the European Union (2014/30/EU). This equipment meets the following conformance standards:

Applicable Standards:

EMC: EN55014-1 / EMI: EN55014-2

CE-GPSD: EN62368-1

CE Packaging: 94/62/EC Toxic Elements in Packaging

Additional licenses issued for specific countries are available on request.

Other:

EN71-1/-2/-3, Chemistry: BPA

Environmental:

REACH: SVHC 211, REACH: Appendix 17: Entry 23 of REACH Annex

XVII / PAHs: Entry 50 of REACH ANNEX XVII, ROHS 2.0

WEEE: Directive 2012/19/EU

Please visit the following URL for a complete copy of the Declaration of Conformity:

<http://www.turtlebeach.com/homologation>



This symbol on the product or its packaging indicates that this product must not be disposed of with your other household waste. Instead, it is your responsibility to dispose of your waste equipment by handing it over to a designated collection point for the recycling of waste electrical and electronic equipment. The separate collection and recycling of your waste equipment at the time of disposal will help conserve natural resources and ensure that it is recycled in a manner that protects human health and the environment. For more information about where you can drop off your waste for recycling,

please contact your local authority, or where you purchased your product.

Voyetra Turtle Beach Inc. is obligated as a producer with a main activity of selling under The Producer Responsibility Obligations (Packaging Waste) Regulations 2007. To fulfill our obligation we are registered with Comply Direct and their Recycling Room. Here you will find advice and information on packaging waste management, recycling symbols, and the waste hierarchy principles of reducing, reuse, and recycle.

<https://www.complydirect.com/the-recycling-room/>



<http://www.turtlebeach.com/homologation>



WWW.TURTLEBEACH.COM

TBS-RC-QSG-C

Documents / Resources



[RECON RECON CONTROLLER](#) [pdf] User Guide
RECON, CONTROLLER

References

- [P65Warnings.ca.gov](https://www.p65warnings.ca.gov/)
- [Turtle Beach Support](#)

Manuals+