



# REALTRACK SYSTEMS WS200 WIMU Smart Station User Manual

[Home](#) » [REALTRACK SYSTEMS](#) » REALTRACK SYSTEMS WS200 WIMU Smart Station User Manual 

REALTRACK SYSTEMS WS200 WIMU Smart Station



## Contents

- 1 INTRODUCTION
- 2 WIMU Smart Station Architecture
- 3 GETTING STARTED GUIDE
- 4 TECHNICAL SPECIFICATIONS (WIMU SMART STATION)
- 5 MAINTENANCE
- 6 IMPORTANT SAFETY INFORMATION
- 7 REGULATORY NOTICES
- 8 Disposal and Recycling Information
- 9 Manufacturer
- 10 OTHER NOTICES
- 11 Documents / Resources
  - 11.1 References
- 12 Related Posts

## INTRODUCTION

### WIMU Smart Station

The WIMU Smart Station is an intelligent docking station designed to operate and control several WIMU trackers at the same time. The WIMU SmartStation is able to charge, extract data and modify the configuration of the connected wearable devices.

# WIMU Smart Station Architecture

## Characteristics:

- Charging Station for WIMU trackers.
- Integrated Smart Screen.
- Capacity: up to 28 devices.

## Connectivity

- Ethernet: Gigabit Ethernet (Max 300 Mb/s)
- 3 x USB: USB 2.0 ports
- Bluetooth
- Frequency Range: 2402-2480 [MHz]
- Maximum Tx Power: 11.6dBm
- WiFi – IEEE 802.11 b/g/n/ac (Max 433.3 Mb/s)
- Frequency Range: 2400 – 2483.5 [MHz]
- Maximum Tx Power: 14.7dBm

## Dimensions:

- Width: 430 mm, High: 155 mm, 375 mm.
- Weight: 6, 5 Kg.

## GETTING STARTED GUIDE

### Introduction

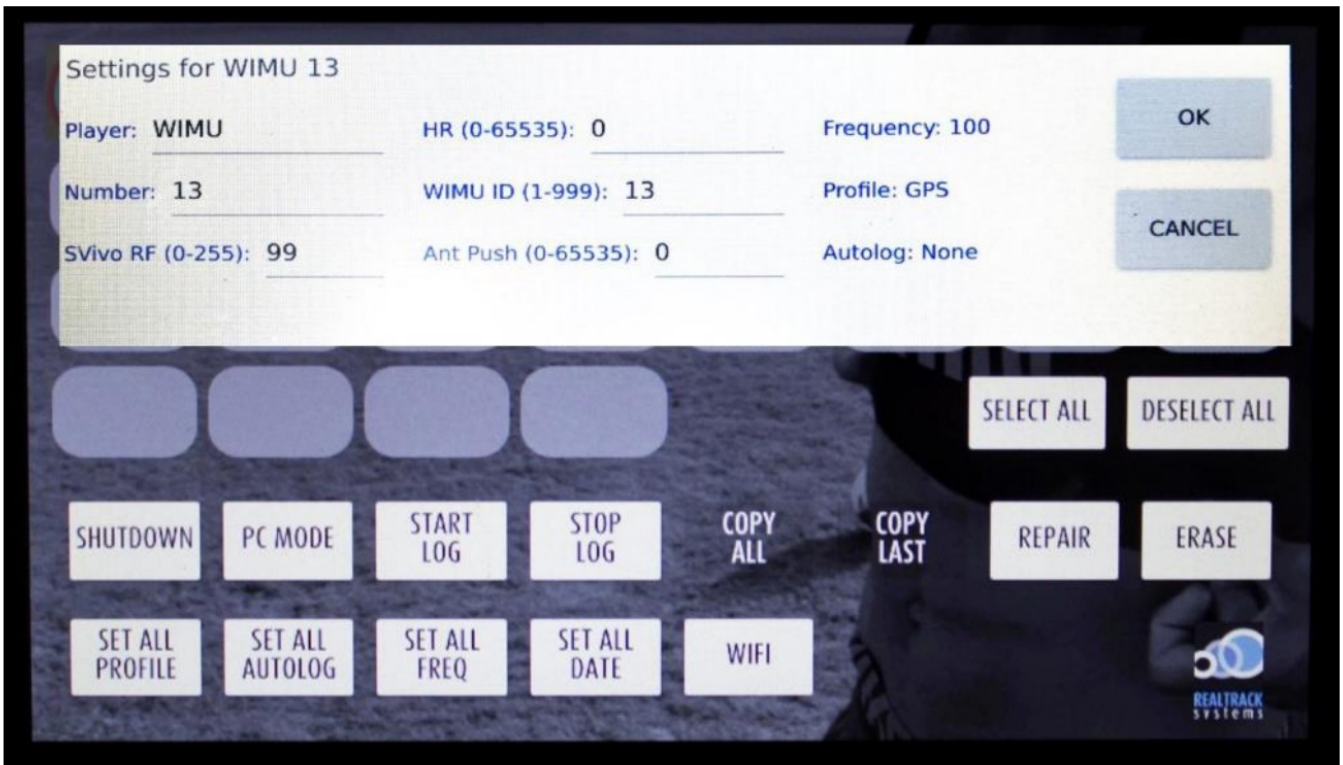
The screen is split in two sections, the connections panel and the operations panel.

In the upper side of the screen, the connections panel provides a real-time representation of the Smart Station connected devices. Each slot provides basic information for each connected

WIMU, such as its identifier, battery level or the use of the device memory.

In the lower side of the screen, the operations panel allows you to execute a set of actions over the selected WIMU/WIMUs, whose selection can be toggled by touching the desired slot in the connections panel. Also, two buttons are provided to facilitate selecting or deselecting all connected devices (“Select All” and “Deselect All”). All WIMUs are selected by default.

When you press for a few seconds any of the connected WIMUs in the connections panel, a new configuration window appears. In it you can visualize and edit WIMU tracker key parameters as the player name and number of the device, WIMU ID and the ID of the Heart Rate band associated with that specific WIMU (editing this information will imply a device reboot) and its frequency number necessary for linking the device to the SVIVO software. In addition, information on the sampling frequency and the data collection profile appears.

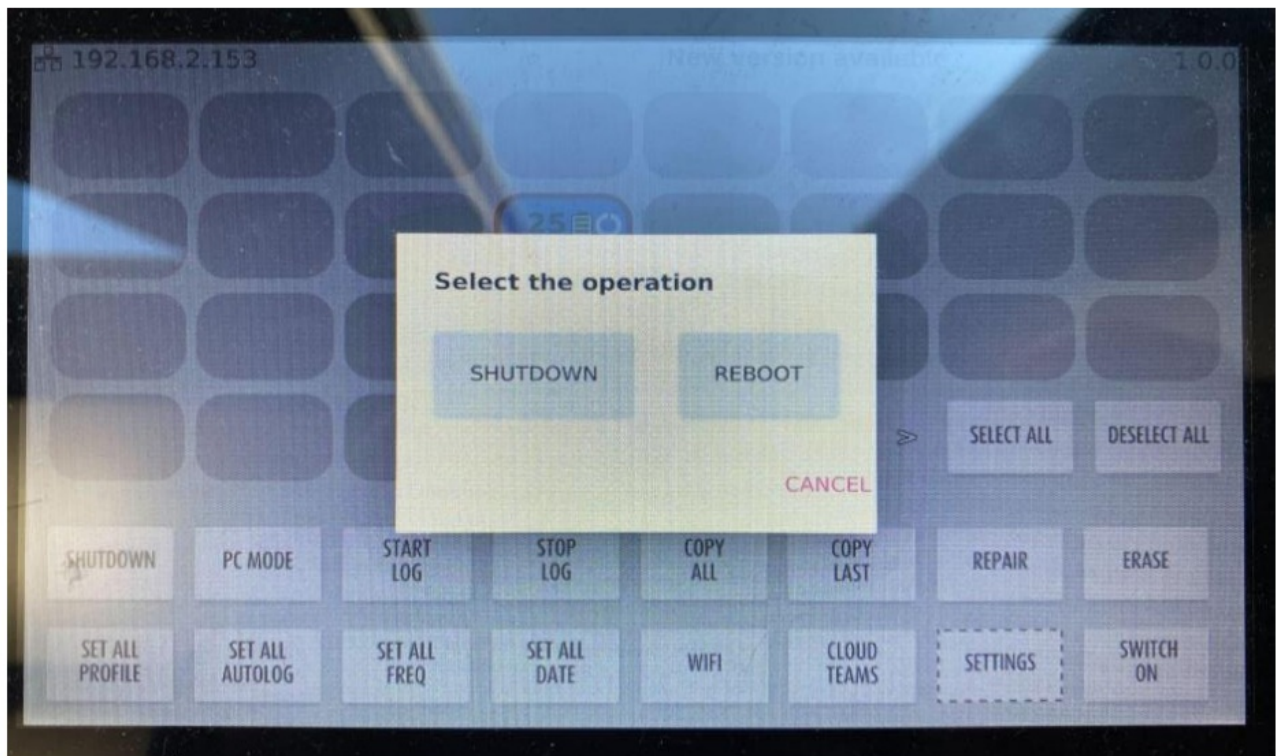


## Actions

The main actions list is detailed below:

### 1. Shutdown

Allows to shutdown or reboot the selected WIMU/WIMUs.

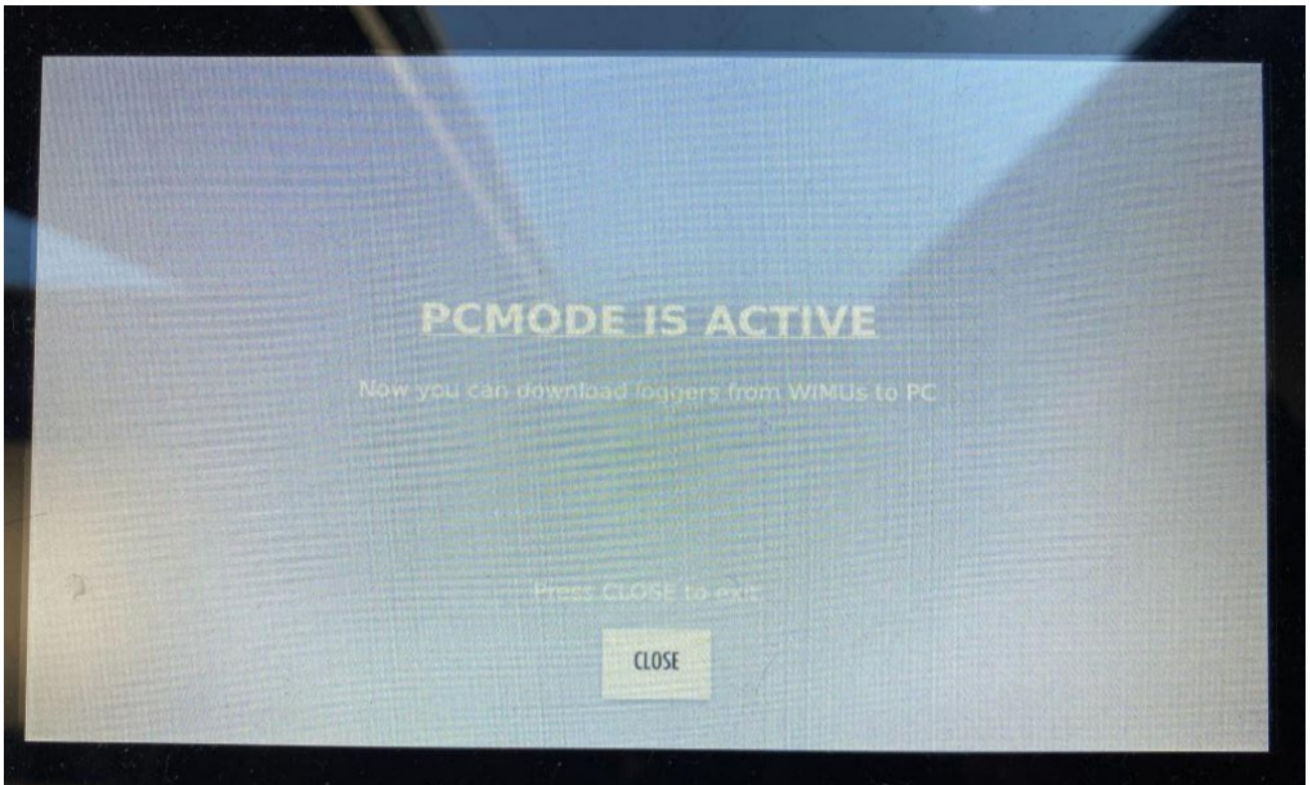


### 2. PC Mode

When the Smart Station is connected to a PC using the provided USB cable, the PC mode option enables a direct connection between the WIMUs and the PC.

This option shall be used to download the data from the WIMUs to the PC.

Note that while this option is enabled, no other action can be performed with the Smart Station.



**3. Start Log**

The selected WIMU/WIMUs will start recording data.

**4. Stop Log**

Disables the data recording of all the WIMU that are currently logging. Note that all the affected WIMU will be rebooted in order to ensure the data integrity.

**5. Copy All and Copy Last**

Create a copy of all stored data or the last session of the selected WIMU/WIMUs. This option is only available when the Smart Station detects an external mass storage device in one of its USB slots.

This option is used to download the trackers data into a portable USB memory device.

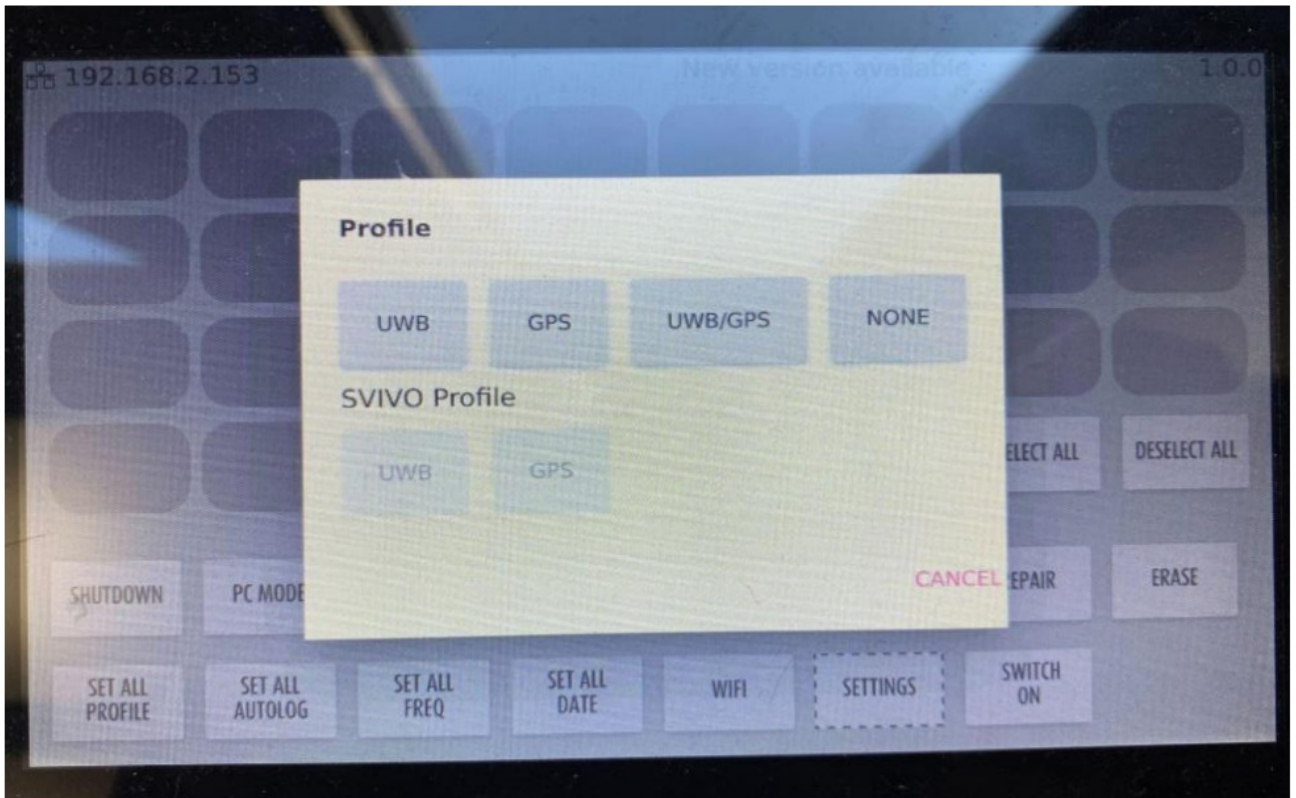
Do not disconnect the device until the operation is complete.



## 6. Set All Profile

Changes the profile of the selected WIMU/WIMUs. This operation requires a reboot of the affected WIMU/WIMUs once the modification is applied. Currently, the available profiles are GPS, UWB, GPS/UWB and None.

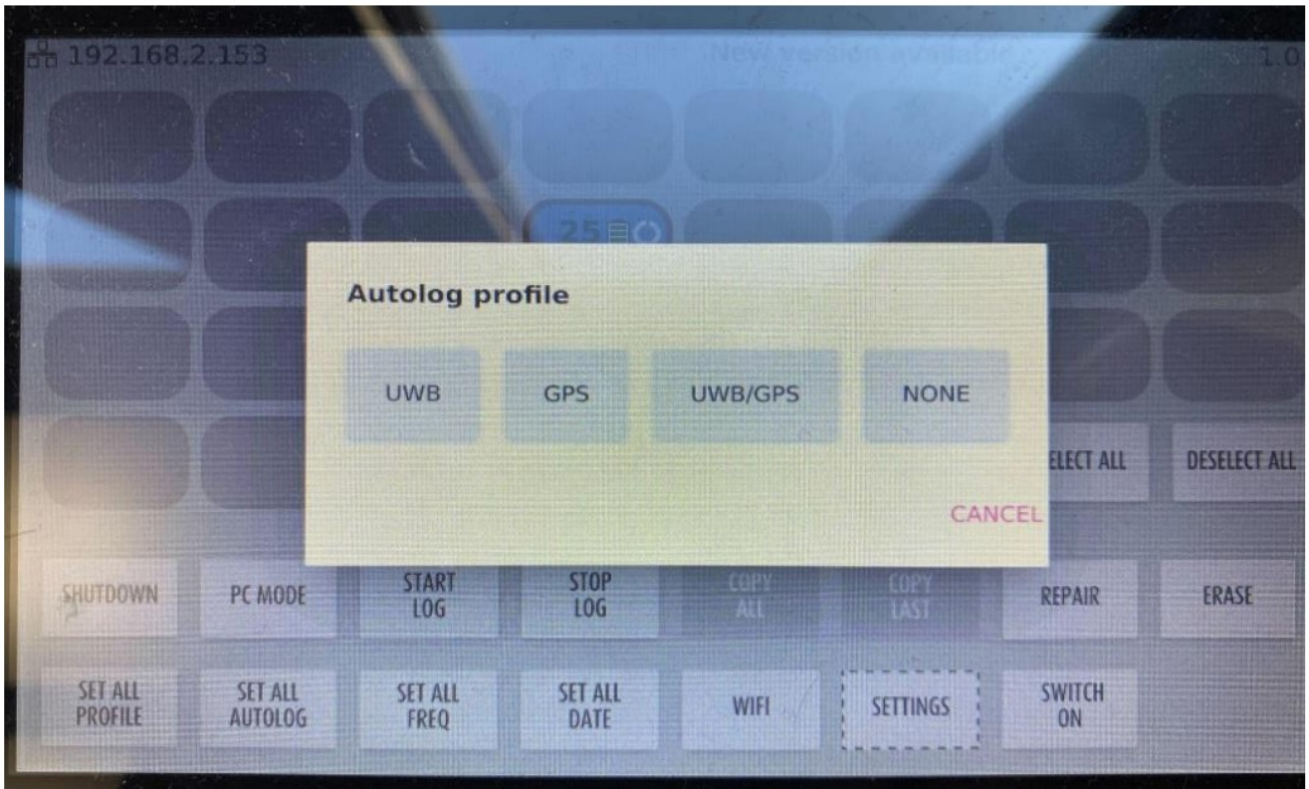
- UWB: Only UWB is enabled (indoor)
- GPS: Only GPS is enabled.
- GPS/UWB: Both GPS and UWB are enabled.
- None: Both GPS and UWB are disabled.



## 7. Set All Autolog

Configure the selected WIMU/WIMUs so that the device will start recording data automatically as soon as it

detects the location signal of the profile in which the device is configured, either GPS, UWB or UWB/GPS.



## TECHNICAL SPECIFICATIONS (WIMU SMART STATION)

ELECTRICAL SPECIFICATIONS		
	INPUT	OUTPUT
VOLTS	100-240 V AC	5 V DC
AMPERES	2.5 A	40 A
FREQUENCY	50/60 Hz	50 /60 Hz

## MAINTENANCE

### Maintenance Warning

- Use the WIMU Smart Station only as directed in this user manual.
- Do not disassemble the device.
- Protect the device from possible damage. Do not drop or expose to excessive heat or excessive sun exposure.
- Store the device in a clean and dry place, at room temperature.
- Avoid scratching the device.
- Do not expose the device to water or other liquids or humidity.

### Cleaning

- Clean the device with a dry cloth.
- Do not use gasoline, solvents, acetone, alcohol, repellents, paints or any other chemical products on the device.

## **IMPORTANT SAFETY INFORMATION**

**WARNING: Failure to follow these safety instructions could result in fire, electric shock, or other injuries, or damage to your WIMU Smart Station or other property. Read all safety information below before using your WIMU Smart Station.**

- Handle the WIMU Smart Station device with care. The WIMU Smart Station and its electrical components can be damaged, have impaired functionality, or cause injury if the WIMU Smart Station is dropped, punctured, crushed, disassembled, or exposed to excessive heat or to humidity or liquids. Don't use a damaged WIMU Smart Station.

Refer all servicing to the manufacturer.

- Clean this device only with a dry cloth.
- Only use attachments/accessories specified by the manufacturer with this device.
- Connect this device to a power source only with the included power cord. Other power cords might not meet applicable regulations and safety standards.
- Don't expose this device to rain, liquids, or moisture.
- Don't use this device near water or in wet conditions.
- Don't use this device near any heat sources such as radiators, heat registers, stoves, or other devices that produce heat or near fire.
- Don't make unauthorized alterations to this device.
- Don't use this device with a damaged power cord or plug.

## **REGULATORY NOTICES**

Product Name: Smart Station

Equipment Model: WS200

HW version: V1

SW version: V1.0.0

### **FCC Statement**

**It contains:** FCC ID: 2ABCB-RPI3BP

**FCC ID: 2AQOD-WS200**

This device complies with part 15 of the FCC Rules. Operation is subject to the following two conditions: (1) This device may not cause harmful interference, and (2) this device must accept any interference received, including interference that may cause undesired operation.

**NOTE:** This equipment has been tested and found to comply with the limits for a Class A digital device, pursuant to part 15 of the FCC Rules. These limits are designed to provide reasonable protection against harmful interference when the equipment is operated in a commercial environment. This equipment generates, uses, and can radiate radio frequency energy and, if not installed and used in accordance with the instruction manual, may cause harmful interference to radio communications. Operation of this equipment in a residential area is likely to cause harmful interference in which case the user will be required to correct the interference at his own expense.



Hudl is not responsible for any radio interference caused by unauthorized modifications to this equipment. Changes or modifications not expressly approved by Hudl could void the user's authority to operate the equipment.

FCC Radiation Exposure Statement: This equipment complies with FCC radiation exposure limits set forth for an uncontrolled environment. This equipment should be installed and operated with minimum distance of 20 cm between the radiator & your body. This transmitter must not be co-located or operating in conjunction with any other antenna or transmitter.

Contact for FCC Matters:  
Agile Sports Technologies, Inc. dba Hudl  
600 P Street, Suite 400  
Lincoln, NE 68508  
USA  
1-402-817-0063

## European Union



Hereby, Realtrack Systems, S.L., declares that the WIMU SMART STATION product is in compliance with Directive 2014/53/EU. Realtrack Systems, S.L. further declares that this product is in compliance with all other applicable EU directive requirements. The full text of the

EU declaration of conformity is available at the following internet address:

<https://www.hudl.com/legal/compliance>

## Disposal and Recycling Information



This crossed-out wheeled bin symbol indicates that the WIMU SMART STATION product should be recycled or disposed of separately from household waste and normal waste, according to local laws and regulations. Please recycle or dispose of this product at end-of-life in accordance with local requirements. For proper treatment, recovery and recycling, please take this product to local collection points where available. Please contact your local authorities for further details of your nearest designated collection point. The separate collection and recycling of this product at the time of disposal will help to conserve natural resources and ensure that this product is recycled in a manner that protects human health and the environment. Penalties may be applicable for incorrect disposal of this product, in accordance with national legislation.

**For professional users in the European Union:** If you wish to discard electrical and electronic equipment (EEE), please contact your dealer or supplier for further information.

**For disposal in countries outside of the European Union:** This crossed-out wheeled bin symbol is only valid in the European Union (EU). If you wish to discard this product, please contact your local authorities or dealer and ask for the correct method of disposal.

## Manufacturer

**Company name:** REALTRACK SYSTEMS, S.L.

**Address:** CALLE GUINEA, 2 04009 ALMERIA SPAIN


**Contact:** <https://www.hudl.com/contact>

## OTHER NOTICES

Hudl and the WIMU logo are trademarks of Agile Sports Technologies, Inc. or its subsidiaries, registered in the USA and other countries. The Hudl logo and WIMU are trademarks of Agile Sports Technologies, Inc. or its subsidiaries. These trademarks may not be used without the express permission of Agile Sports Technologies, Inc.

Realtrack Systems S.L. is a subsidiary of Agile Sports Technologies, Inc.

## Documents / Resources

	<p><a href="#">REALTRACK SYSTEMS WS200 WIMU Smart Station</a> [pdf] User Manual WS200, 2AQOV-WS200, 2AQOVWS200, WS200 WIMU Smart Station, WIMU Smart Station, Smart Station, Station</p>
---	--

## References

- [🔗 Contact Us | Hudl](#)
- [🔗 Compliance](#)

[Manuals+](#)