



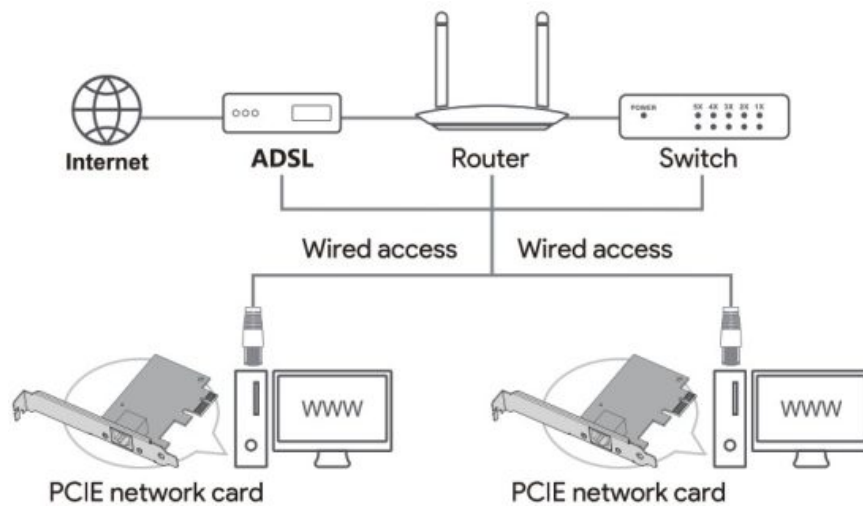
Quick Installation Guide

V1.0

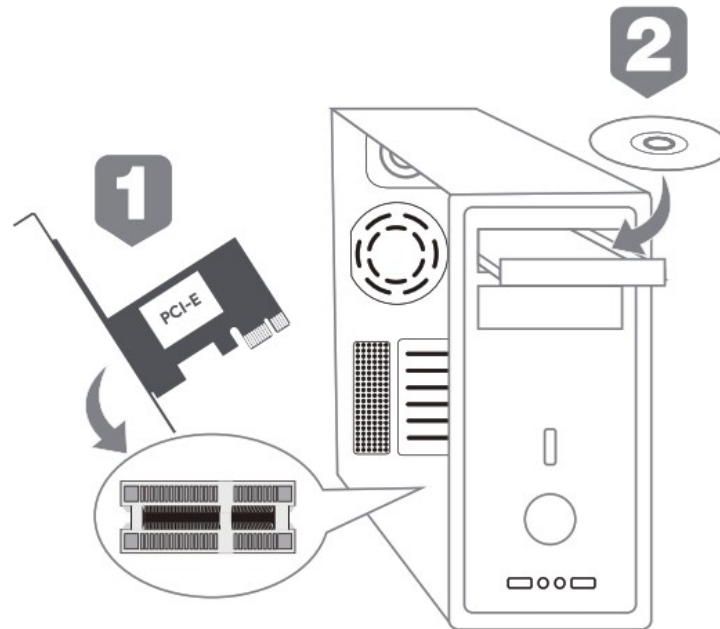
Contents [[hide](#)]

- [1 Application schematic](#)
- [2 Documents / Resources](#)
 - [2.1 References](#)

Application schematic



1. Hardware installation



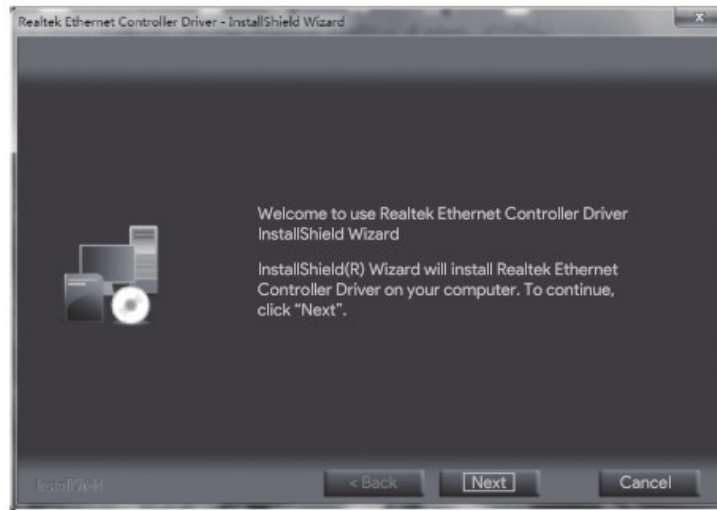
2. Driver Installation (e.g. win 7)

- a. The installation wizard will pop up automatically, click the installation program for your matching operating system.

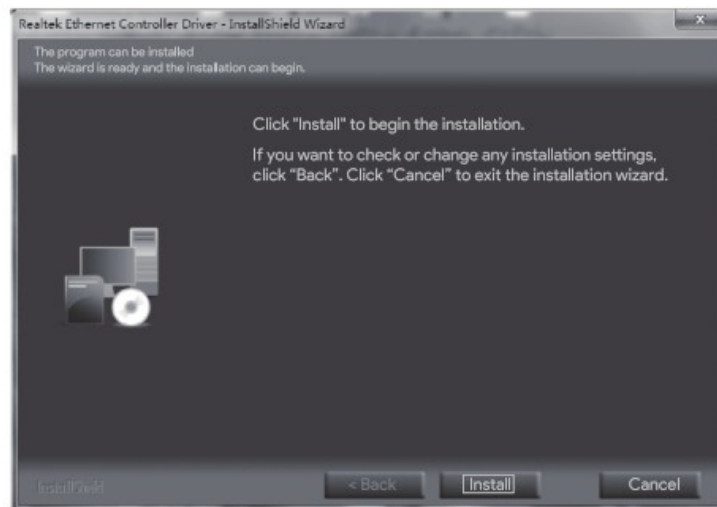


! If the above interface does not pop up automatically, please turn on the computer and double-click to run the CD drive. Before installing the driver, please turn off the firewall or other security protection software to prevent false alarms or block the installation during the installation process


- b. Click "Next"



c. Click “Install” and wait for about 1 minute, then click “Finish” to end the installation.



Documents / Resources

| | |
|---|--|
|  | <p>REALTEK EP-9635 Ethernet Controller Driver [pdf] Installation Guide</p> <p>EP-9635, EP-9635 Ethernet Controller Driver, Ethernet Controller Driver, Controller Driver, Driver</p> |
|---|--|

References

- [User Manual](#)

◆ Controller Driver, driver, EP-9635, EP-9635 Ethernet Controller Driver, Ethernet Controller Driver,

■ Realtek Realtek

Leave a comment

Your email address will not be published. Required fields are marked *

Comment *

Name

Email

Website

☐ Save my name, email, and website in this browser for the next time I comment.

Post Comment

Search:

Search

[Manuals+](#) | [Upload](#) | [Deep Search](#) | [Privacy Policy](#) | [@manuals.plus](#) | [YouTube](#)

This website is an independent publication and is neither affiliated with nor endorsed by any of the trademark owners. The "Bluetooth®" word mark and logos are registered trademarks owned by Bluetooth SIG, Inc. The "Wi-Fi®" word mark and logos are registered trademarks owned by the Wi-Fi Alliance. Any use of these marks on this website does not imply any affiliation with or endorsement.