



**ReadiTech FIBER
DRN ReadiTech
WiFi App**



ReadiTech FIBER DRN ReadiTech WiFi App User Guide

[Home](#) » [ReadiTech FIBER](#) » ReadiTech FIBER DRN ReadiTech WiFi App User Guide 

Contents

- [1 ReadiTech FIBER DRN ReadiTech WiFi App](#)
- [2 Quick Start Guide:](#)
- [3 Documents / Resources](#)
 - [3.1 References](#)
- [4 Related Posts](#)



ReadiTech FIBER DRN ReadiTech WiFi App



Quick Start Guide:

Setting up your Wi-Fi and App

1. Download the app. You can search either the Apple App Store for 'DRN RT WiFi' or Google Play Store for: 'DRN', then install it on your mobile device.



2. Select "SIGN UP" towards the bottom of the screen.

9:41

Welcome to
DRN ReadTech WiFi

Login

Everything you need to secure and control
your home network and connected devices.

Email

jamie.lee@gmail.com ✓

Password

CommandIQ1

Location

USA

Login

[Forgot Password?](#)

Don't have an account? [Sign Up](#)

3. Enter your personal information. The password you enter here will be used to access the app.

9:41

Step 1 of 3

Sign Up

Create a new account

First Name

Jamie

Last Name

Lee

Email

jamie.lee@gmail.com ✓

Password

Location

USA

☒ I accept the [terms & conditions](#) & [privacy policy](#)

Note:

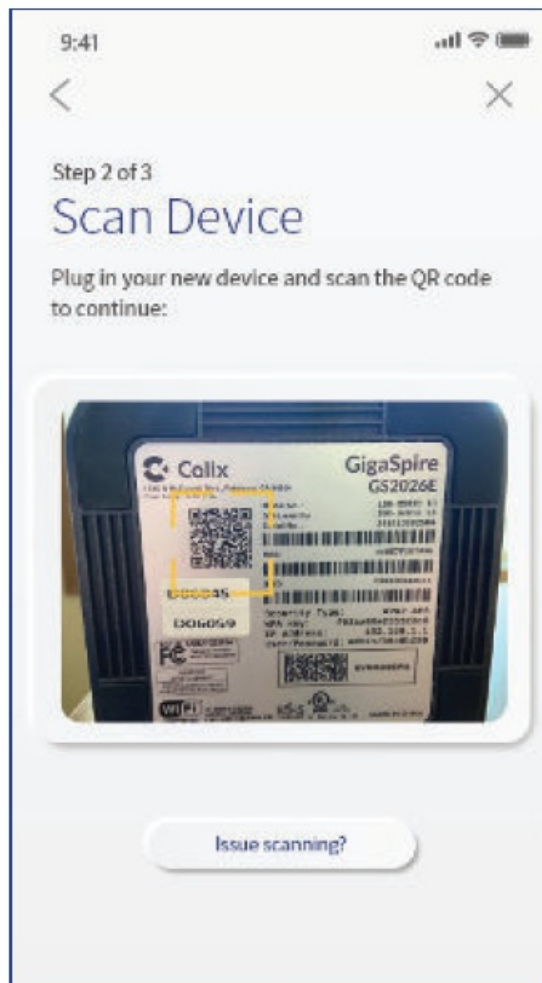
Please wait at least 10 minutes after your BLAST System has been 'turned up' before attempting step 4.

4. If your system is plugged in and connected select

"Yes" to continue.

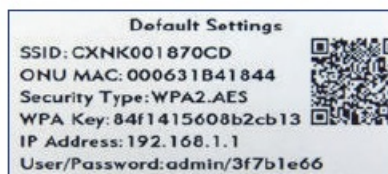
Otherwise select

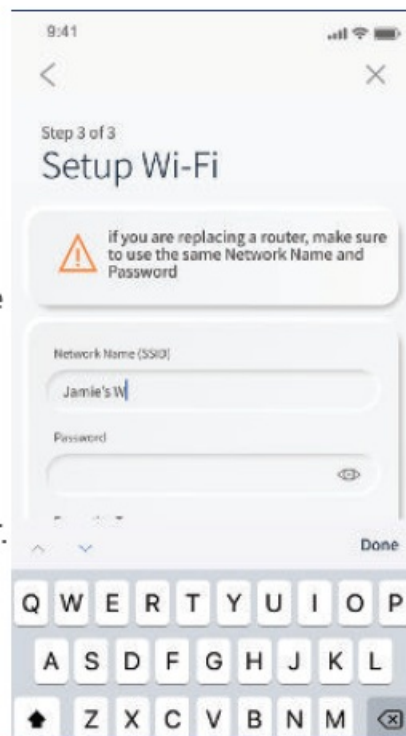
"Not Sure?" at the bottom of the screen and skip to steps 4a-4e on the next page to get things connected.



5. Tap the QR code that appears within the app. (You will be asked to allow the app to access your camera.) Point your camera at the QR Code found on the bottom of your BLAST System, or on the sticker that came in your box (example shown below).

Select OK. After you select "Submit", you may be asked to enter your account number.



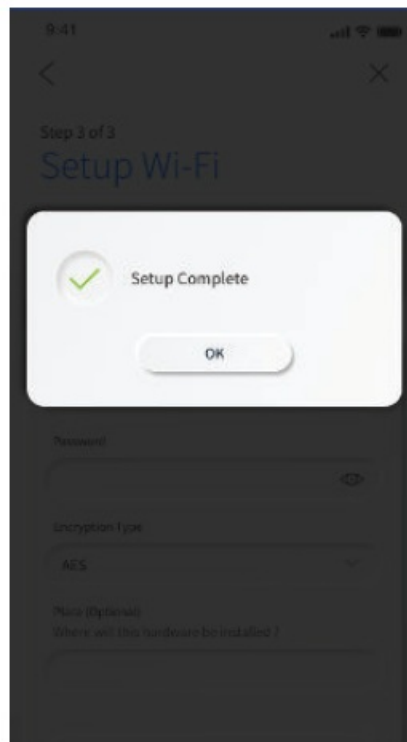


Note:

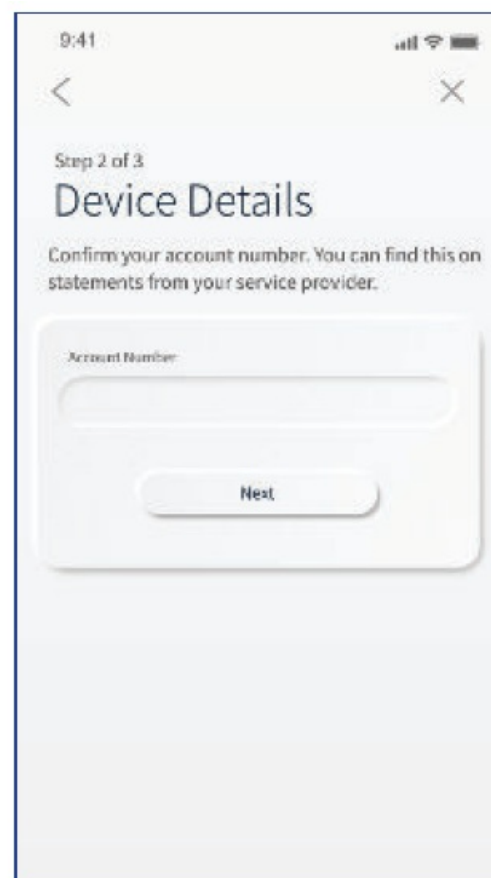
6. If your system is already operating with Wi-Fi, tap the “Click here to skip” text. Otherwise, complete these steps to set-up your Wi-Fi.
Name your network and create a password.



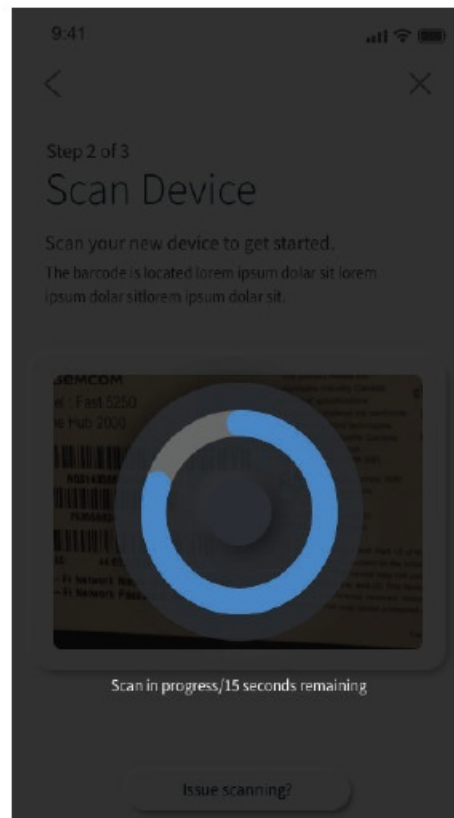
- The Router Name will be used throughout the app.
- The Network Name (SSID) is what you will use as your wireless connection name.
- Select a password for your wireless network, if you do not want to change it on all the devices in your home, use your existing wireless SSID and Password from your current router.



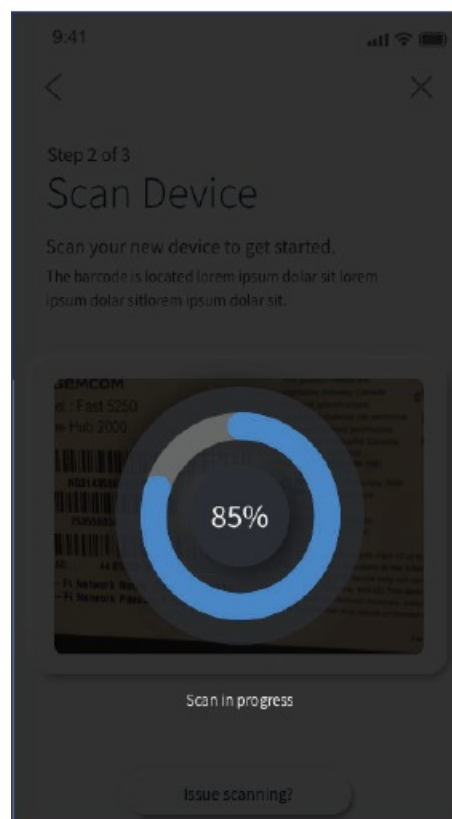
- It's time to setup your new system. Locate your existing internet service device. This is typically known as a modem or ONT. It may look like one of these.



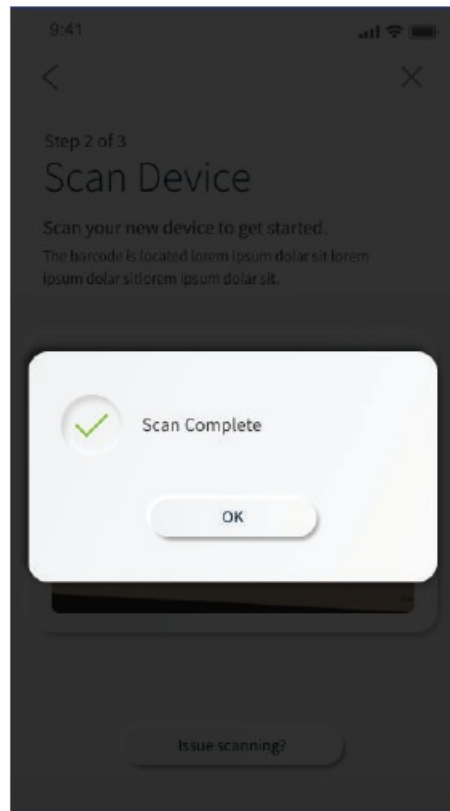
- Unplug the device and remove all cables. Wait 2 minutes.



- After 2 minutes, plug the device back in and turn it on.



- Connect the ethernet cable from the ethernet/LAN port on your existing internet service device to the port labeled WAN on your new system.



- Now, connect your new system to a power outlet. It may take several minutes for the unit to be ready. It will show a solid green light. Once the device is connected, tap “Unit Ready.”
Go back to step 5 on the previous page.

Need help?

Contact support: 701.347.2020 | support@readitech.com | readitech.com/fiber

FAQ


- **Q: How do I name my network and set a password?**

A: Within the app, when prompted, you can name your network and create a password to secure it. You can also use your existing wireless SSID and Password from your current router.

- **Q: What should I do if my system is not connecting to Wi-Fi?**

A: If your system is not connecting to Wi-Fi, follow the steps outlined in the app or manual to troubleshoot the connection issues. Ensure proper cable connections and power supply.

Documents / Resources

	ReadiTech FIBER DRN ReadiTech WiFi App [pdf] User Guide DRN ReadiTech WiFi App, App
---	--

References

- [Best Home Internet Provider in Cassleton, Horace, Mapleton, ND | ReadiTech](#)
- [User Manual](#)

Manuals+. Privacy Policy

This website is an independent publication and is neither affiliated with nor endorsed by any of the trademark owners. The "Bluetooth®" word mark and logos are registered trademarks owned by Bluetooth SIG, Inc. The "Wi-Fi®" word mark and logos are registered trademarks owned by the Wi-Fi Alliance. Any use of these marks on this website does not imply any affiliation with or endorsement.