



## React Health HomeFill Oxygen System User Guide

[Home](#) » [REACT HEALTH](#) » React Health HomeFill Oxygen System User Guide 

### Contents

- 1 React Health HomeFill Oxygen System
- 2 Patient Set Up In the Home
- 3 HomeFill Compressor Function Test
- 4 Preventative Maintenance
- 5 Preventative Maintenance
- 6 System Troubleshooting
- 7 Documents / Resources
  - 7.1 References



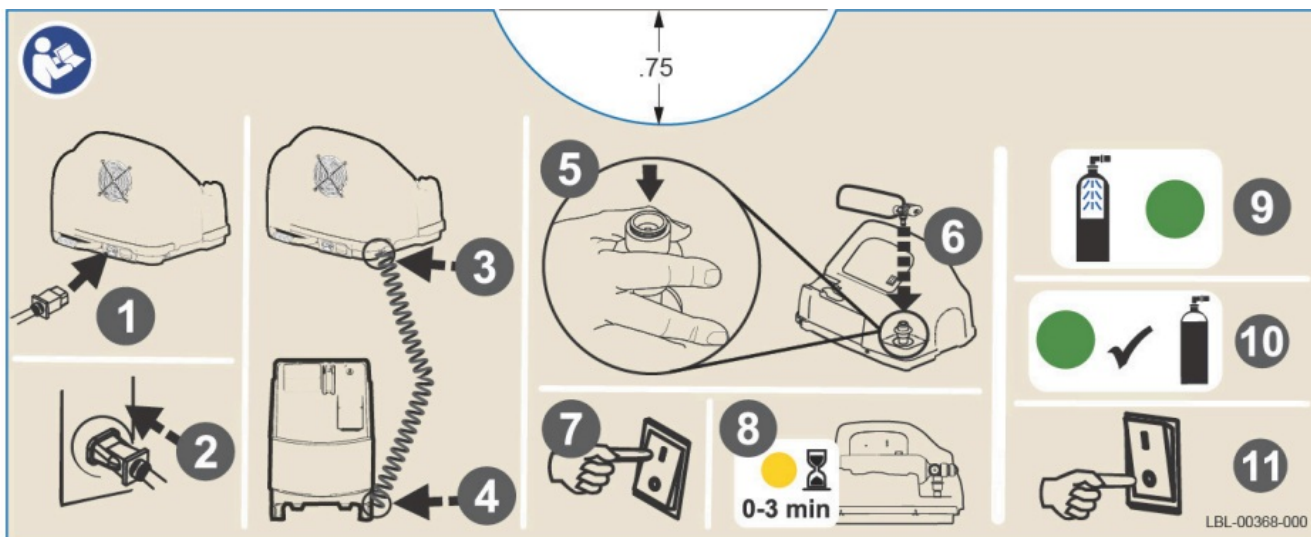
**React Health HomeFill Oxygen System**



## Patient Set Up In the Home

Start with a running concentrator that has reached >90% oxygen purity, as required by the HomeFill compressor. Set the prescribed flow rate for the patient.

- Step 1 Connect the power cord (part #1112949) to the compressor.
- Step 2 Plug in the power cord.
- Step 3 Connect the fill tubing (part #1105177) to the compressor.
- Step 4 Connect the fill tubing to the concentrator.
- Step 5 Push down and hold the coupler sleeve.
- Step 6 Connect the cylinder to the coupler. Linderr. DO NOT attempt to top off the cylinder. It may not f
- Step: Turn ON the compressor.
- Step 8: Wait 0-3 minutes for the compressor to start up. The yellow light will come on.
- Step 9: Wait as the cylinder fills. The green (filling) light will come on.
- Step 10 When the cylinder is full, a green (full) light will come on.
- Step 11) Turn the compressor OFF.



This instruction label is applied to all Ventec/ReaHealthmanufactured redd HomeFill compressors. The Quick Start label is for reference ONLY. It is imperative to read the manual in its ENTIRETY for full instructions.

## HomeFill Compressor Function Test

### Perform at Provider Location

- Step 1 Set test concentrator to 3 L/min. And verify oxygen concentration > 90%.
- Step 2 Plug in the HomeFill compressor.
- Step 3 Connect the concentrator to the compressor.
- Step 4 Connect an empty HomeFill cylinder to the cylinder fill port.
- Step 5 Turn the compressor on and observe for the following:

The Wait (YELLOW) light comes on for 3 minutes.

After 3 minutes, the Fill (GREEN) light will come on when the O<sub>2</sub> from the concentrator is >90%.

The compressor begins to fill the cylinder.

Disconnect the concentrator oxygen supply line and observe that the "O<sub>2</sub> below Normal" (YELLOW) light comes on. Reconnect the concentrator supply line and observe that the Fill (GREEN) light comes on and the cylinder begins to fill.\*- Fill tthe cylinder Verify fill time accuracy for cylinder size according to the chart below.

### Fill Times with the flow to the patient

	Normal	Maximum
HF2PC9	2 hr 20 min*	2 hr 45 min
HF2POST9	2 hr 20 min*	2 hr 45 min
HF2POSTD	3 hr 20 min*	3 hr 50 min

## Preventative Maintenance

## HomeFill Compressor

As needed: Clean the cabinet with a mild household cleaner and a non-abrasive cloth or sponge.

**NOTE:** Take care to prevent debris or liquids from entering the tank. Weekly: Clean the Compressor Filter

- Step 1: Unplug the compressor. Grasp the plug, not the cord.
- Step 2 Remove the filter (part 2000489).
- Step 3 Clean the filter with a vacuum cleaner or wash in warm, soapy water and rinse thoroughly.
- Step 4 Dry the filter thoroughly before reinstallation.

## HomeFill Cylinder Function Test

Perform at Provider Location

- Step 1: U Make sure the cylinder fill port properly connects to the HomeFill I filling unit.
- Step 2 Partially fill the cylinder to check for proper filling operation (15 min).
- Step 3 Verify movement on gauge.
- Step 4 Check the cylinder for leaks.
- Step 5 Test the flow of the regulator at continuous flow. It should read 2 L/min.
- Step 6 Connect an oxygen cannula to the conserving device at each setting.
- Step 7 Breathe with the cannula to see if it pulses.
- Step 8 Bleed the cylinder down until empty (use 2 L/min. continuous flow setting the conserverver). If it does not pulse, discontinue use.
- Step 9 Verify that the gauge is at zero psi when the cylinder is empty.

## Preventative Maintenance

### HomeFill Cylinder

As needed: Clean the cylinder and conserver (if applicable)

#### Step 1

Ensure the cover is installed on the fill port.

#### Step 2

Clean the exterior surfaces of the cylinder with a lint-free cloth dampened with 70% isopropyl alcohol.

#### Step 3

Clean the exterior surfaces of the conserver with a dry, lint-free cloth.

#### Step 4

If the conserver is still visibly soiled, clean it with a lint-free cloth dampened with 70% isopropyl alcohol. DO NOT wipe the fill port or outlet fitting.

#### Step 5

Wipe the cylinder and conserver with a dry, lint-free cloth. Ensure the product is dry before using.

- Every 5 years: The Conserver should be inspected and tested.
- Every 5 years: The cylinder must undergo hydrostatic testing.

## System Troubleshooting

If there is a Yellow light:

Step 1 Check the connector tubing for breaks, blockages, or damage.

Step 2 Check the cylinder connection.

Step 3 Check the concentrator flow rate. The concentrator flow rate must be less than 3 L/min for 5 L concentrators and 5 L/min for 10 L concentrators.

### Other Helpful Information

The HomeFill compressor contains an O<sub>2</sub> sensor to ensure that >90% oxygen goes into the cylinder. The coiled tubing helps prevent connector breakage. HomeFill cylinders are virtually silent. The recommended patient setup is one HomeFill compressor and two cylinders. Patients can breathe from the concentrator while filling a cylinder. Non-Ventec/React Health/Invacare concentrators may require lower output flow rates to the patient to provide ≥90% oxygen levels to the HomeFill compressor.

Oxygen Concentrator	Maximum Output Flow for Patient Use
Perfecto2™ 5L models	3 L/min
Platinum® 5L models	3 L/min
Platinum® 10L models	5 L/min

### Approved Concentrator and Ready Rack

Concentrator	Ready Rack Product ID
Perfecto2™, Perfecto2™ V	IOH270
Platinum® 5NXG	IOH280
Platinum® 10	IOH260

### Model Information

The HomeFill Ready Rack is sold separately and is used to position the HomeFill compressor on top of an oxygen concentrator.

### [ReactHealth.com](https://www.reacthealth.com)

Caution: U.S. Federal law restricts this device to sale by or on the order of a physician. Technical specifications may change.

MKT-00131, Rev A

This Quick Start Guide is intended to provide a high-level overview of the HomeFill Oxygen System made up of the HomeFill Compressor and HomeFill Cylinders. It does not contain all the information required to operate the HomeFill System safely. For detailed instructions for use, see the User Manuals available online at [reacthealth.com](https://www.reacthealth.com).

### Documents / Resources



[React Health HomeFill Oxygen System](#) [pdf] User Guide  
MKT-00131, DAGWd-T\_SNU, BAFA5G3UnUc, HomeFill Oxygen System, HomeFill, Oxygen System, System

## References

- [User Manual](#)

[Manuals+](#), [Privacy Policy](#)

This website is an independent publication and is neither affiliated with nor endorsed by any of the trademark owners. The "Bluetooth®" word mark and logos are registered trademarks owned by Bluetooth SIG, Inc. The "Wi-Fi®" word mark and logos are registered trademarks owned by the Wi-Fi Alliance. Any use of these marks on this website does not imply any affiliation with or endorsement.