



RDL D-NLC1 Network Remote Control with LEDs Instruction Manual

[Home](#) » [RDL](#) » RDL D-NLC1 Network Remote Control with LEDs Instruction Manual 

Contents

- [1 RDL D-NLC1 Network Remote Control with LEDs](#)
- [2 Product Information](#)
- [3 Product Usage Instructions](#)
- [4 Introduction](#)
- [5 Volume Config](#)
- [6 Satellites](#)
- [7 Device Config](#)
- [8 Controller Select](#)
- [9 Documents / Resources](#)
 - [9.1 References](#)



RDL D-NLC1 Network Remote Control with LEDs



Product Information

The D-NLC1 DB-NLC1 Network Remote Control with LEDs is a device that allows users to remotely control audio systems. It has a web interface and can be accessed via MAC address or mDNS. It is compatible with RDL IP and DHCP protocols. The device has a volume configuration feature that allows users to set output levels, with an increment of (+/- dB). The device also has a button function that enables or disables auto lock, with a default time of 30 seconds. The device has line outputs 1 and 2 that have a range of 0 to -63dB and uses XLR connectors. The device can also be used with satellites and controllers.

Product Usage Instructions

To use the D-NLC1 DB-NLC1 Network Remote Control with LEDs, follow the instructions below:

1. Connect the device to the audio system using the XLR connectors.
2. Access the device using the web interface via MAC address or mDNS.
3. Set the output levels using the volume configuration feature.
4. Enable or disable auto lock using the button function.
5. Configure the device for satellites and controllers if necessary.
6. Set the display settings for the LEDs, including the dimming mode, dim timeout, and display on/off.
7. Configure the device's network settings, including IP mode (dynamic or static) and IP address.
8. Select the controller mode (satellite or controller) using the ontroller select feature.

Introduction

- In this manual, we will introduce the setting method of network remote controller D-NLC1 series.
- To start setting, access the device from a web browser.
- MAC address from name to address
- To access the setting screen using the MAC address, enter "MODER -MAC 6 characters.local" in the browser.
- You can check the model name and MAC address from the sticker on the side of the unit.
- In the example in the image below, the model name is D-NLC1, the vendor ID is removed, the MAC address is C9:DC:24, and the browser address is Enter <http://d-nlc1-c9dc24.local>.

- In order to access this method, the browser must be compatible with mDNS.

d-nlc1-c9dc24.local



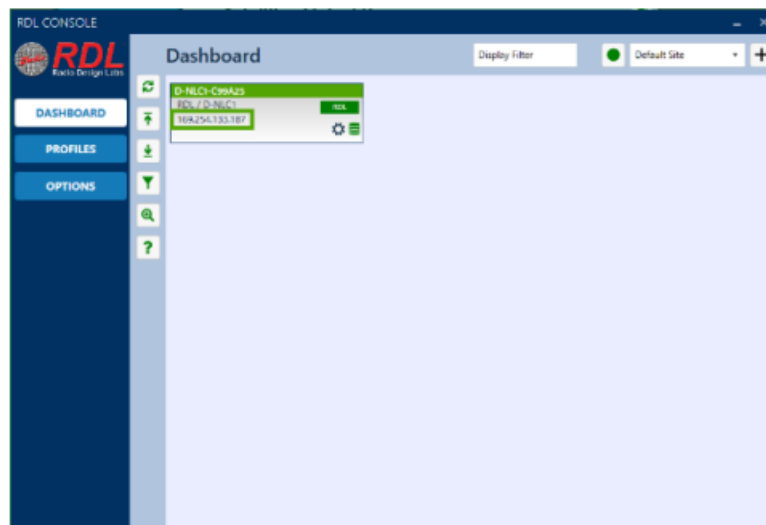
Search for IP addresses using the RDL console software

You can search the IP address of D-NLC1 using the RDL console software.

You can display the setting screen by entering the address bar. D-NLC1's IP default setting is DHCP client. It's mode.

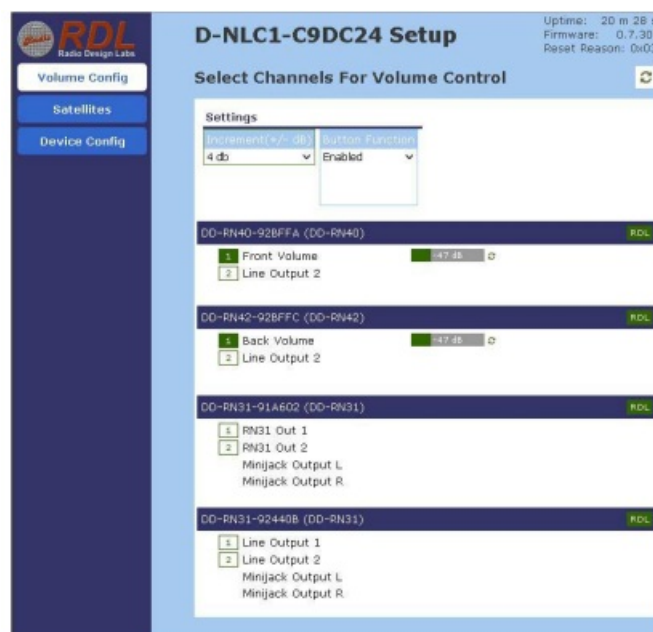
The RDL Console software can be downloaded from the following link.

<https://audiobrain.com/download/rdl/>



Volume Config

- The item that can be set in Volume Config is Output Level of each device.
- Set the channel and volume to adjust with the remote controller.
- If the RDL DD-RN series is on the same network as the D-NLC1, the list can be displayed and configured.



Settings

- Increment (+/- dB)
- You can set the volume step in dB value.
- Button Functions
- You can select Enable, Auto Lock, or Disable for the front panel pushbutton function.
- You can select Enable/Disable to enable or disable the push button.
- If Auto Lock is selected, the buttons will be locked 30 seconds after the operation. KEYPAD on the Device Config page described later
- You can unlock it with the operation set in "UNLOCK SEQUENCE".

Configurable and configured devices are displayed at the bottom of the Setting menu. No communication with the device for more than 4 minutes. If it stops, [ERR] is displayed in red. Configurable devices are assigned a number next to the channel name. Click the number to turn the channel green, and can be controlled by D-NLC1. You can also select multiple channels. In this case all channels volume is linked. If one or more channels are set to maximum or minimum volume, no more cannot be operated. For selected channels, the volume level for that channel is displayed. Refresh button after volume change. You can get the current volume level by pressing . D-NLC1. If there are many Dante devices on the same network, it may take some time for the devices to appear in the list. It may cost.

If no controlled channel is selected, The D-NLC-1 Mute LED flashes red and the front panel pushbutton does not work.

See the table below for controllable devices and target channels.

Controlled device /Controlled channel /interface /value

- DD-RN31/DDB-RN31/ Line Output 1/ analog line output (rear Euroblock) /0 to -63dB
 - Line Output 2
- DD-RN40/DDB-RN40/Line Output 1/Analog line output (rear Euroblock)
 - Line Output 2
- DD-RN42/DDB-RN42Line Output 1Q/ Analog line output (XLR)
 - Line Output 2

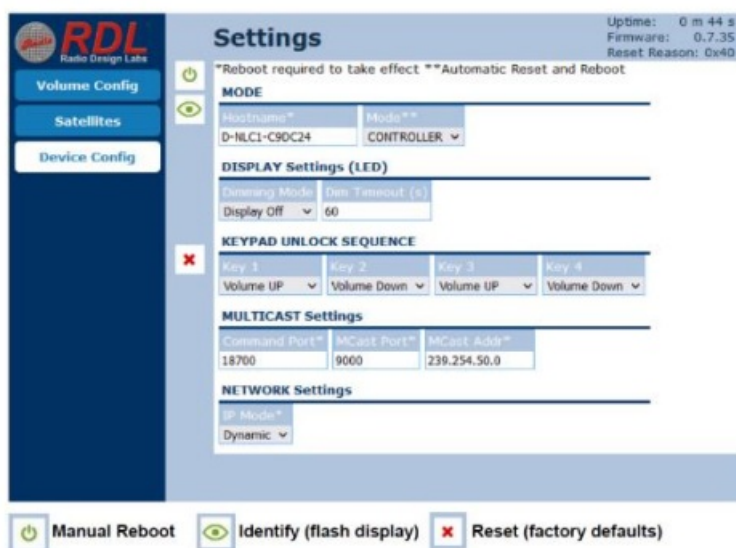
Satellites

- The Satellites page shows the RDL Network Remote Controller acting as its own SATELLITE.
- vinegar . SATELLITE is a child device that works in conjunction with the parent CONTROLLER.
- Up to 7 SATELLITEs can be added to one CONTROLLER.
- Control commands from the SATELLITE are sent to the CONTROLLER and from the CONTROLLER to the controlled device. ancestor
- Therefore, control is possible from multiple locations.
- When D-NMC1 is CONTROLLER and D-NLC1 is SATELLITE, only D-NMC1 can control Group mode.
- Volume and mute only for channels set to mode.
- For Group mode, please refer to the separate D-NMC1 manual.



Device Config

On the Device Config page, you can configure the settings for the D-NLC1 itself.



MODE

Hostname

- You can change the host name. The default is “model name” – “MAC address without vendor ID”.
- After changing, please reboot to confirm the setting.

Mode

- Set the operation mode from CONTROLLER and SATELLITE. If you change the operating mode, it will automatically restart.
- When set to SATELLITE mode, it must be linked to the CONTROLLER. See below for how to link.
- Please refer to the item of Control Select.

DISPLAY Settings (LED)

Dimming Mode

Sets the display mode of the LED.

- **Display Off**

LED turns off if no operation is performed for the time set by Dim Timeout(s)

Dim

If no operation is performed for the time set by Dim Timeout(s), the LED dims.

- **Display On**

Display is always on

- **Dim Timeout(s)**

Can be specified from 0 to 65535 seconds

KEYPAD UNLOCK SEQUENCE

- Sets how to unlock when the button is set to Auto-lock on the Volume Config screen the button
- When disabled, you cannot unlock with the button on the main unit
- Auto-lock locks the front panel buttons after 30 seconds of inactivity. to unlock
- It is necessary to operate the four buttons set in this item.

MULTICAST Settings

- You can set the multicast packet used for control.
- This item usually does not need to be changed.

NETWORK Settings

- **IP Mode**

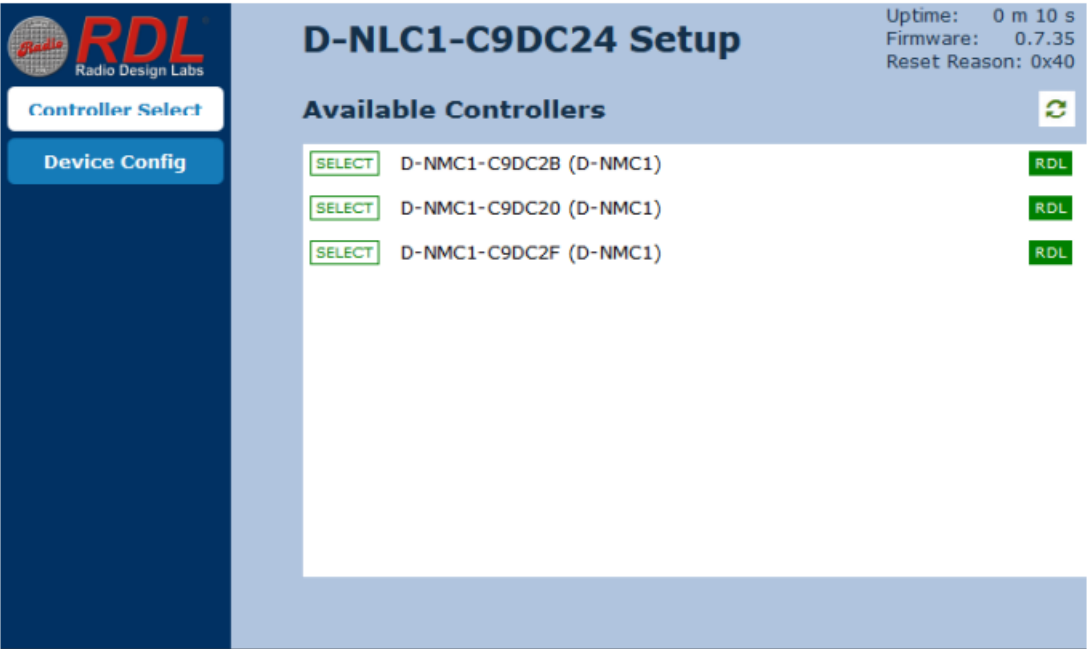
Set the IP mode from Dynamic and Static. If you select Static, set the IP address, mask, and gateway manually can.

Controller Select

- This page appears when you set SATELLITE mode from the Device Config page.
- On this page, you can see CONTROLLER is displayed.

operate as parent

- Click the CONTROLLER SELECT button to register. At this time, 1 SATELLITE device CONTROLLER only can be selected.
- The SATELLITE device can control the items set by the master CONTROLLER.



Please contact Audio Brains Co., Ltd. for inquiries regarding the handling of this product.
Inquiries are accepted from 10:00 to 18:00, excluding Saturdays, Sundays, holidays, and company holidays.

- 216-0034
- 3-1 Kajigaya, Miyamae Ward, Kawasaki City, Kanagawa Prefecture
- **Phone:** 044-888-6761
- <https://audiobrains.com>



Documents / Resources

<div>Setup Instructions</div> <div></div>	<div>RDL D-NLC1 Network Remote Control with LEDs [pdf] Instruction Manual</div> <div>D-NLC1, DB-NLC1, D-NLC1 Network Remote Control with LEDs, D-NLC1, Network Remote Control with LEDs, Network Remote Control, Remote Control, Control, Remote</div>
---	--

References

- [○○○](#)
- [○○○](#)
- [○○○ RDL |](#)
- [○○○](#)