

RCA Sensor Connect App User Guide

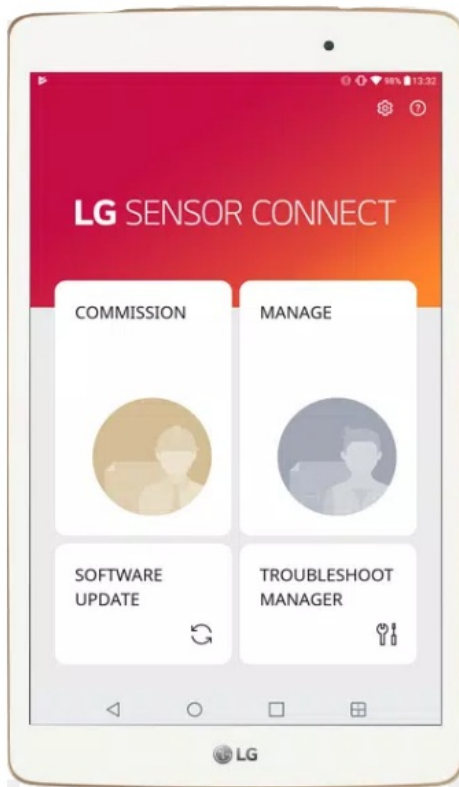
[Home](#) » [RCA](#) » RCA Sensor Connect App User Guide 

Contents

- [1 RCA Sensor Connect App](#)
- [2 Product Information](#)
- [3 Product Usage Instructions](#)
- [4 FAQ](#)
- [5 Items needed to start](#)
- [6 Creating a Building](#)
- [7 Setting a Profile](#)
- [8 Adding Lights/Switches](#)
- [9 Documents / Resources](#)
 - [9.1 References](#)
- [10 Related Posts](#)



RCA Sensor Connect App



Product Information

Specifications

- **Product Name:** RCA Sensor Connect™
- **Product Type:** Wireless Lighting Controls
- **Optimized for:** Non-residential spaces
- **Compatible Devices:** Android devices with version 8 or higher
- **USB Module:** Part no. RCA-VLC-USB

About RCA Sensor Connect™

RCA Sensor Connect™ is a stand-alone wireless lighting system designed for non-residential spaces such as offices, schools, factories, and hospitals. It offers an easy way to create lighting groups, optimize energy savings, and facilitate maintenance for facility managers. With the RCA Sensor Connect App, users can easily set up and operate lights, sensors, switches, and schedulers within a lighting group. The system supports the creation of more than 10,000 independent lighting groups without the need for a network management device.

Topics Covered In This Guide

1. Items Needed to Start
2. Creating a Building
3. Adding a Floor
4. Adding a Room (Location)
5. Setting a Profile
6. Adding Lights/Switches – OFFLINE
7. Adding Lights/Switches – ONLINE

Contact Support

If you need any assistance or have any questions, you can reach out to our support team through the following channels:

- **Toll Free Phone:** 1-800-722-2161 (opt. 1) – Tech support answered by humans
- **Email:** support@rcaled.com – Tech support answered by humans
- Corporate HQ: 5935 W. 84th Street, Suite A Indianapolis, IN 46278

Product Usage Instructions

Items Needed to Start

To get started with RCA Sensor Connect™, you will need the following:

- An Android device with version 8 or higher
- A Zigbee/VLC USB Module (Part no. RCA-VLC-USB)
- An Android phone or tablet to install the Sensor Connect App

Android Phone or Tablet

An Android phone or tablet with version 8 or higher is required to install the Sensor Connect App. Make sure your device meets this requirement.

USB A to C Adapter

If your Android device does not have a USB A port, you will need a USB A to C adapter to connect the Zigbee/VLC USB Module.

Zigbee/VLC USB Module

The Zigbee/VLC USB Module (Part no. RCA-VLC-USB) is used to communicate with RCA Lights. Insert the module into the USB port of your Android device (use a USB A to C adapter if needed) and allow it to access the UART bridge controller.

Sensor Connect App – First Time Setup

1. Insert the USB Zigbee Programming Module into the USB port of your Android device (use a USB A to C adapter if needed). Allow the module to access the UART bridge controller.
2. Open the Sensor Connect 2 application on your Android device.
3. In the app, insert a password in the 2nd and 3rd box. The password should be 8 characters or more and include an upper and lowercase letter, a number, and a special character (@#\$\$%^+=!) with no spaces. For example, "P@ssword1".
4. The app will restart and insert the saved password.

Creating a Building – Offline Mode

The first step in setting up your site is creating a building in offline mode. Follow these steps:

1. From the Sensor Connect home screen, tap on "COMMISSION".
2. Select "Offline commissioning".
3. Under Buildings, tap on "Add".
4. Name the building and tap "OK".

Adding a Floor – Offline Mode

After creating your building, the next step is adding floors to your building plan. Once a floor is created, rooms can be added to each floor. Follow these steps:

1. From the Sensor Connect home screen, tap on the building you want to add a floor to.
2. Tap on “Add Floor”.
3. Name the floor and tap “OK”.

FAQ

- **Q: Can I use RCA Sensor Connect™ in residential spaces?**

A: No, RCA Sensor Connect™ is optimized for non-residential spaces and is not recommended for residential use.

- **Q: How many independent lighting groups can I create with RCA Sensor Connect™?**

A: You can create more than 10,000 independent lighting groups in a space without a network management device.

- **Q: How do I contact RCA support?**

A: You can contact RCA support through the following channels:

- **Toll Free Phone:** 1-800-722-2161 (opt. 1)
- **Email:** support@rcaled.com
- **Corporate HQ:** 5935 W. 84th Street, Suite A Indianapolis, IN 46278

About RCA Sensor Connect™

RCA SENSOR CONNECT 2 is a stand-alone wireless lighting system that is optimized for non-residential spaces such as offices, schools, factories, and hospitals. The RCA SENSOR CONNECT APP makes it easy to create lighting groups in the building's space to optimize energy savings and to help facility managers easily maintain lighting groups. It can create more than 10,000 independent lighting groups in a space without a network management device, and can easily split or merge lighting groups. To help end-user's energy requirements, It can easily set up and operate the lights, sensors, switches, and schedulers within a lighting group, and redesign the groups. Create a commissioning plan by designing a lighting group and easily register the ID of the fixtures in advance by scanning the QR code from the fixture or barcode on the packaging. Just click on the commissioning button once at the site and SENSOR CONNECT APP will commission all fixtures into your lighting plan.

CONTACT SUPPORT

- **Toll Free Phone**

1-800-722-2161 opt. 1

Tech support answered by humans

- **Email**

support@rcaled.com

Tech support answered by humans

- **Corporate HQ**

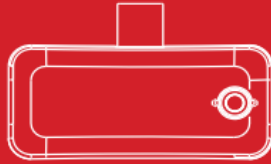
5935 W. 84th Street, Suite A Indianapolis, IN 46278

Items needed to start



An Android Device

An Android phone or tablet, with version 8 or higher to install Sensor Connect App on



Zigbee/VLC USB Module

This device is used to communicate with RCA Lights. Part no. **RCA-VLC-USB**



Sensor Connect app

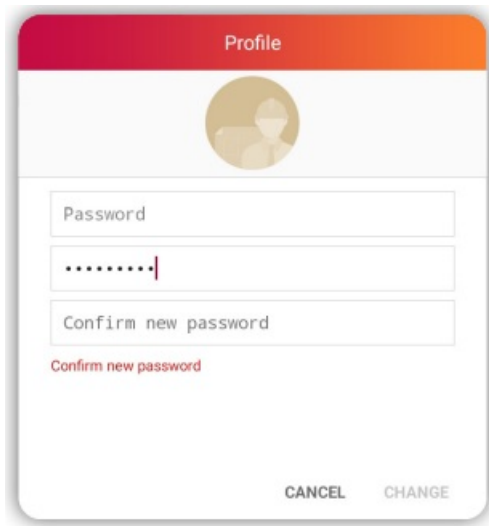
To download the app manually, search "Sensor Connect" in google play store

Sensor Connect App – First Time Setup

1. Insert the USB Zigbee Programming Module into the USB port. (USB A to C adapter may be required). Allow the module to access UART bridge controller.



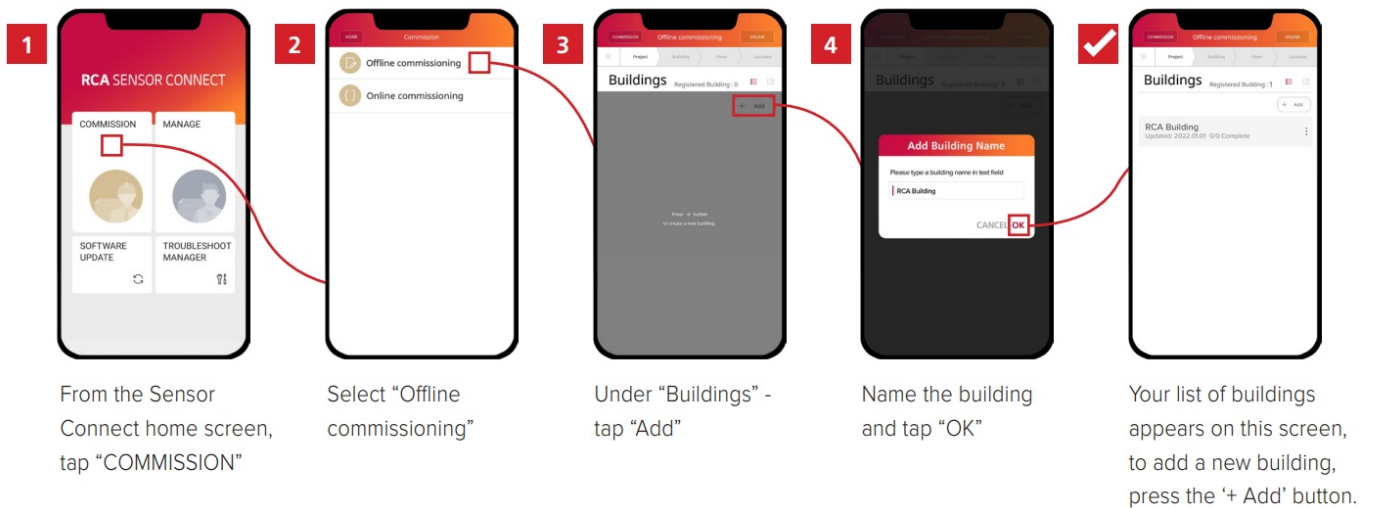
2. Open the Sensor Connect 2 application and insert a password in the 2nd and 3rd box. Password needs to be 8 characters or more and to include an upper and lowercase letter, a number and special character (@#\$\$%^+=!) with no spaces, such as "P@ssword1". The app will restart and insert the saved password.



Creating a Building

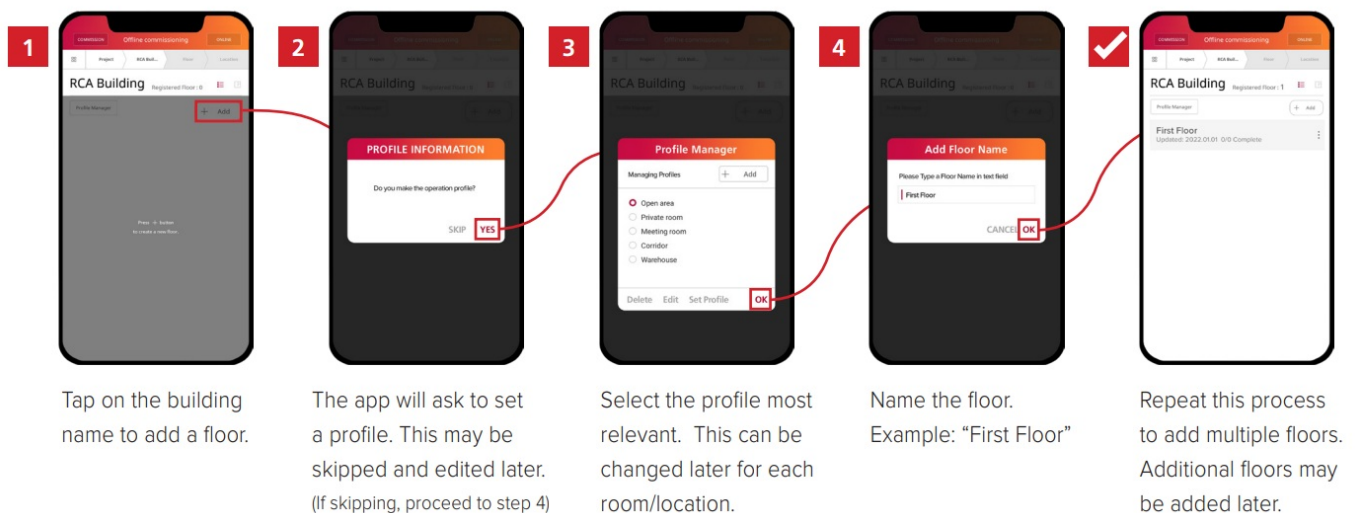
Offline Mode

The first step in setting up your site is creating a building in offline mode, after which you can add floors and rooms.



Adding a Floor Offline Mode

After creating your building, the next step is adding floors to your building plan. Once a floor is created, rooms can be added to each floor.



Adding a Room (Location) Offline Mode

Once you have created a floor, adding a room (known as a location in Sensor Connect) is easy. Follow these steps.

- 1 Select your floor.
- 2 Press the **+ Add** button.
- 3 Name the location.
(Such as Corridor, Office 1, etc.)
- ✓ Press the **OK** button to save.

Setting a Profile

Offline Mode

Profiles contain light settings like brightness, timing, CCT, motion detection and daylight harvesting and can be assigned to rooms (locations).

1 Go to a specific room (location) and tap "Set Profile"

2 All the light settings including the color (CCT) may be adjusted here.

3 Motion can be enabled/disabled. Sensitivity and timing can be adjusted.

4 Daylight may be enabled/disabled with the minimum light setting to which it will go.

5 If any profile setting has been changed, **it must be renamed** (top LHS corner) and saved.

Adding Lights/Switches Offline Mode

Lights/Switches can be added in offline mode at any time, even when they are not installed or powered.

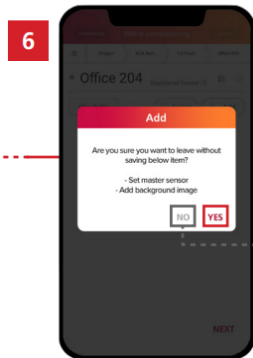
1 To add a device such as a light or switch, go to the location in Sensor Connect and tap "Add"

2 Select the device type and how it's to be registered.

3 For example, if you choose "Camera" to scan a QR or bar code, the device will be added to the text box.

4 When the scan is completed, tap plus "+" to add the light or switch.

5 This screen shows all the devices added as bar codes. When done tap "NEXT"



The master should be set when on site in the "Online mode" and background image may be added now or later.

Optional

Add a background image or arrange lights in grid view. Tap "NO" in step 6 to proceed.

7

To add a background image, tap on the map view in the top RHS corner.

8

If you have an image/plan of the area you can upload it now or tap "Skip" to load a grid view.

In this view, fixtures can be placed and grouped as needed. For further details refer to the Sensor Connect Manual.

NOTE: Devices added in offline mode will be programmed during online commissioning as "registered devices" (see page 5, step 7)

End Of Offline Commissioning

Continue to "online mode" instructions to add lights via wireless detection of installed and powered lights.

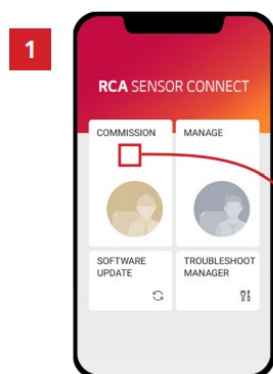
Adding Lights/Switches

Online Mode

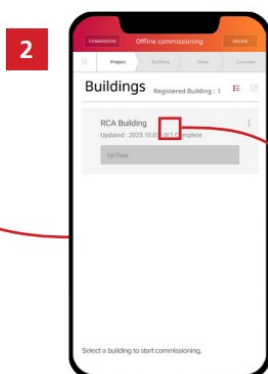
Online commissioning allows for the detection/addition of lights, assignment of profiles and designation of a master device using Zigbee wireless technology.

When on-site and in an area that needs to be commissioned:

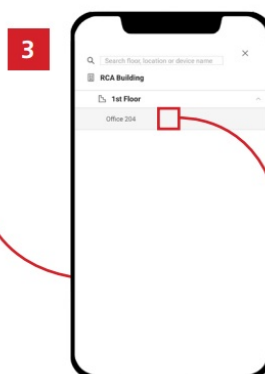
Be sure to have created a building, added a floor and added a room (location) before proceeding to online commissioning. You will need the Zigbee/VLC USB Module and have it connected as described in the "Items Needed To Start" section of this guide before proceeding.



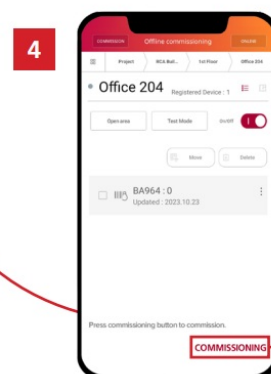
From the home screen, select "Commissioning."



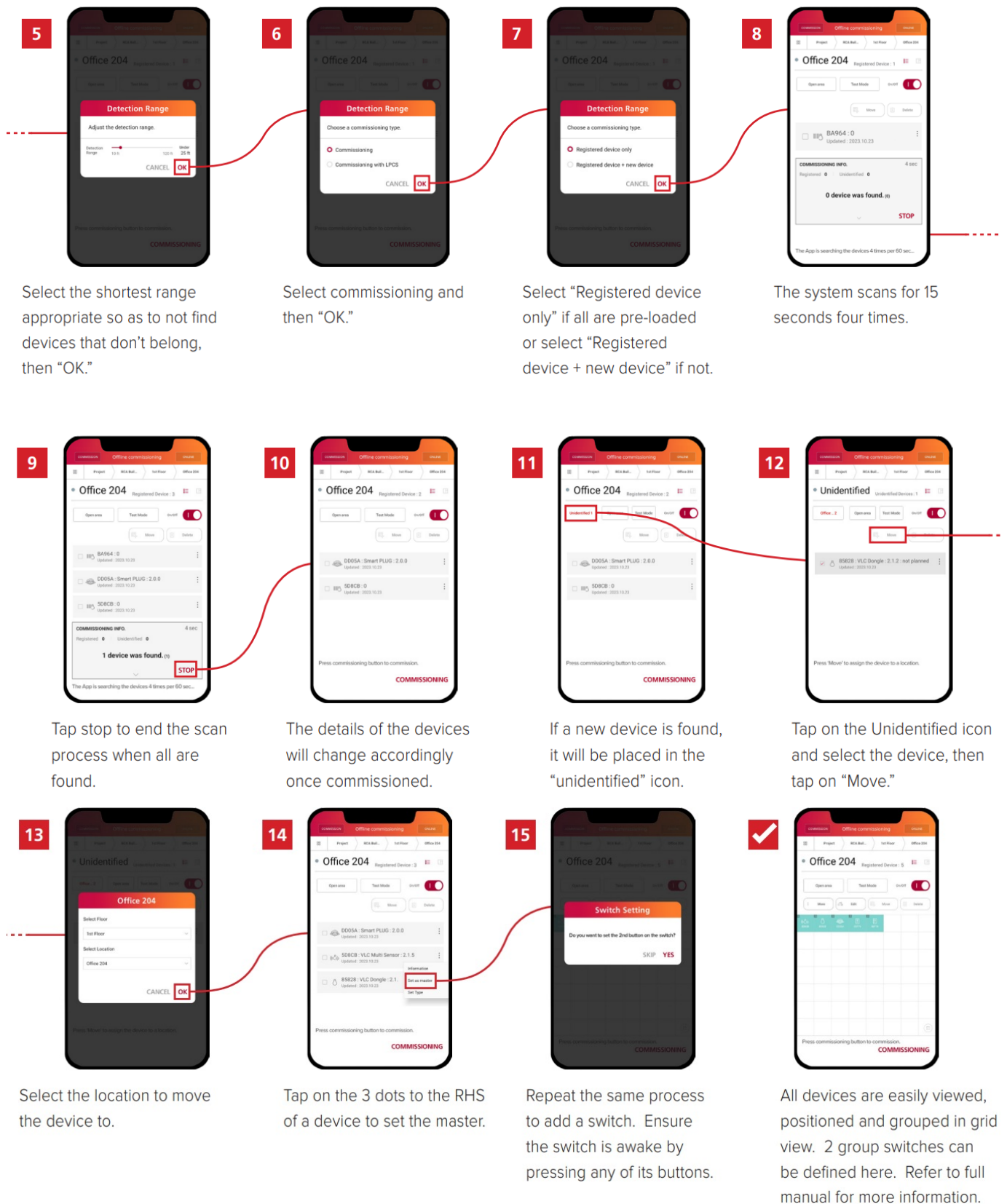
Tap "Online Commissioning" and select the building.



Select the Location/Area to be commissioned.



Tap on "Commissioning in the bottom RHS corner.



End of Basic Sensor Connect Setup


For further information regarding advanced features such as daylight harvesting, grouping, scheduling, scene selectors, etc. refer to the full Sensor Connect Manual at: <https://www.rcalights.com/resources/>



© 2023 RCA Commercial Electronics | 5935 West 84th Street | Indianapolis, IN 46278 | www.RCALIGHTS.com | info@rcaled.com | 1-800-RCA-2161

* RCA, the RCA logo and the two dogs (Nipper and Chipper) logo are trademarks used under license by DTI SERVICES LLC. – further information at www.rca-brand.com

Documents / Resources

	<p>RCA Sensor Connect App [pdf] User Guide RCA-VLC-USB, Sensor Connect App, Connect App, App</p>
--	--

References

- [Information about the license](#)
- [Home - RCA Lighting : RCA Lighting](#)
- [Resources Archive - RCA Lighting : RCA Lighting](#)
- [User Manual](#)