



RC Factory 39" EPP Flash CL Control Line Set User Manual

[Home](#) » [RC Factory](#) » RC Factory 39" EPP Flash CL Control Line Set User Manual 

Contents

- [1 39" EPP Flash CL Control Line Set](#)
- [2 Product Specifications](#)
- [3 Product Usage Instructions](#)
- [4 USING INDTRUCTION](#)
- [5 Frequently Asked Questions](#)
- [6 Documents / Resources](#)
 - [6.1 References](#)
- [7 Related Posts](#)



39" EPP Flash CL Control Line Set



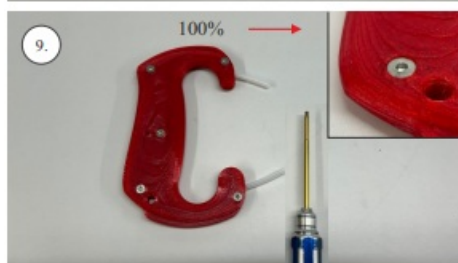
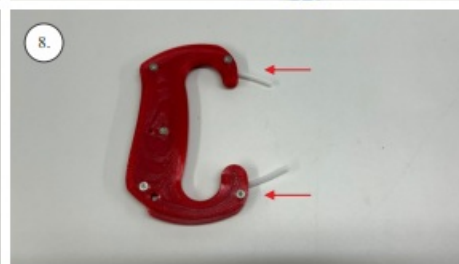
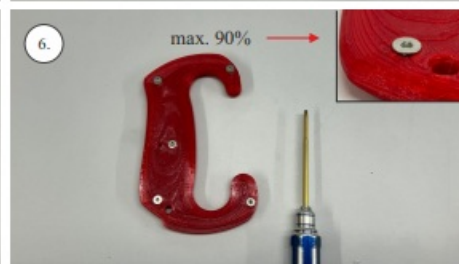
Product Specifications

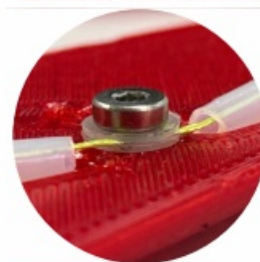
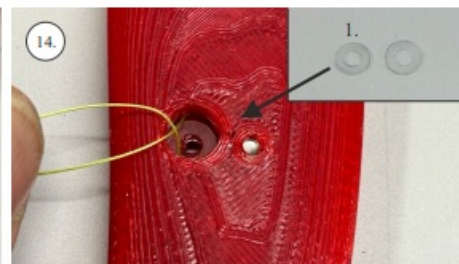
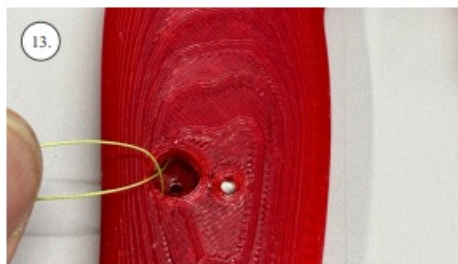
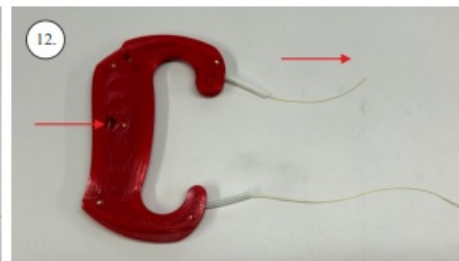
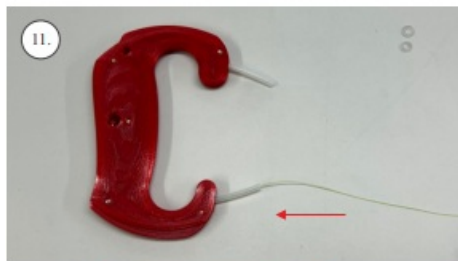
- Control Line Set
- **Max. Tension:** 90%
- **Screws:** M3x8 – 4x, M3x6 – 1x
- **Activator:** Thin CA Activator

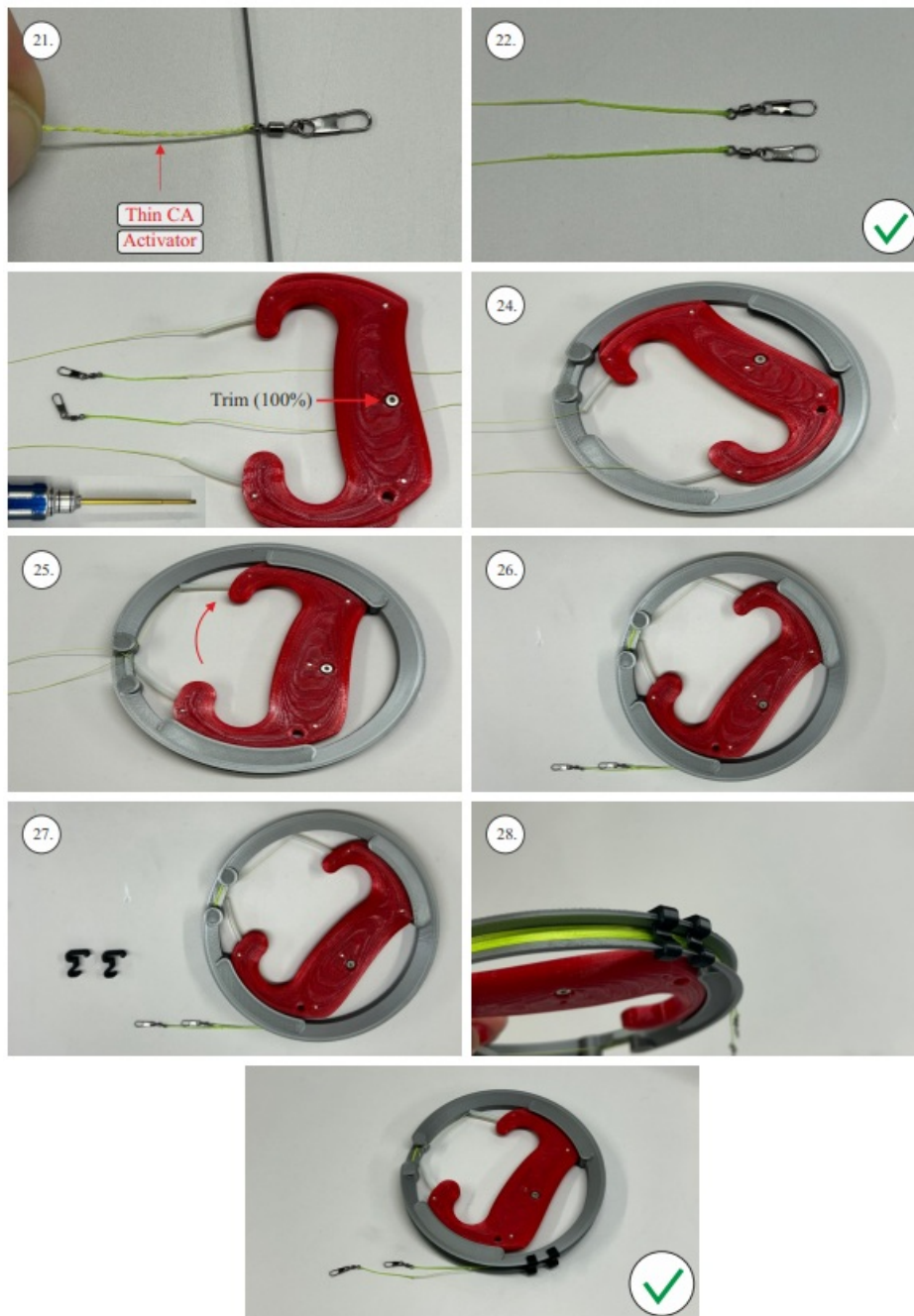
Product Usage Instructions

- **Control Line Set**
Ensure all components of the control line set are included and in good condition before use.
- **Tension Adjustment**
Adjust the tension of the control line set to a maximum of 90% for optimal performance.
- **Screw Installation**
Use the provided M3x8 screws to secure the necessary components.
Use 4 screws for proper installation.
- **Activator Application**
Apply the Thin CA Activator as needed for activating adhesives or ensuring proper bonding.
- **Trim Adjustment**
Set the trim level to 100% for precise control and maneuverability.

USING INDTRUCTION








Frequently Asked Questions

- **Q: How many M3x6 screws are included in the set?**
 - A: There is one M3x6 screw provided for specific installation requirements.
- **Q: What is the purpose of the Thin CA Activator?**
 - A: The Thin CA Activator is used to activate adhesives quickly and ensure strong bonding.

Documents / Resources

	<p>RC Factory 39" EPP Flash CL Control Line Set [pdf] User Manual 39 EPP Flash CL Control Line Set, 39 EPP Flash CL, Control Line Set, Line Set, Set</p>
---	---

References

- [User Manual](#)

[Manuals+](#), [Privacy Policy](#)

This website is an independent publication and is neither affiliated with nor endorsed by any of the trademark owners. The "Bluetooth®" word mark and logos are registered trademarks owned by Bluetooth SIG, Inc. The "Wi-Fi®" word mark and logos are registered trademarks owned by the Wi-Fi Alliance. Any use of these marks on this website does not imply any affiliation with or endorsement.