

Razor
W25143400015
Crazy
Cart
Control
Module



Razor W25143400015 Crazy Cart Control Module Installation Guide

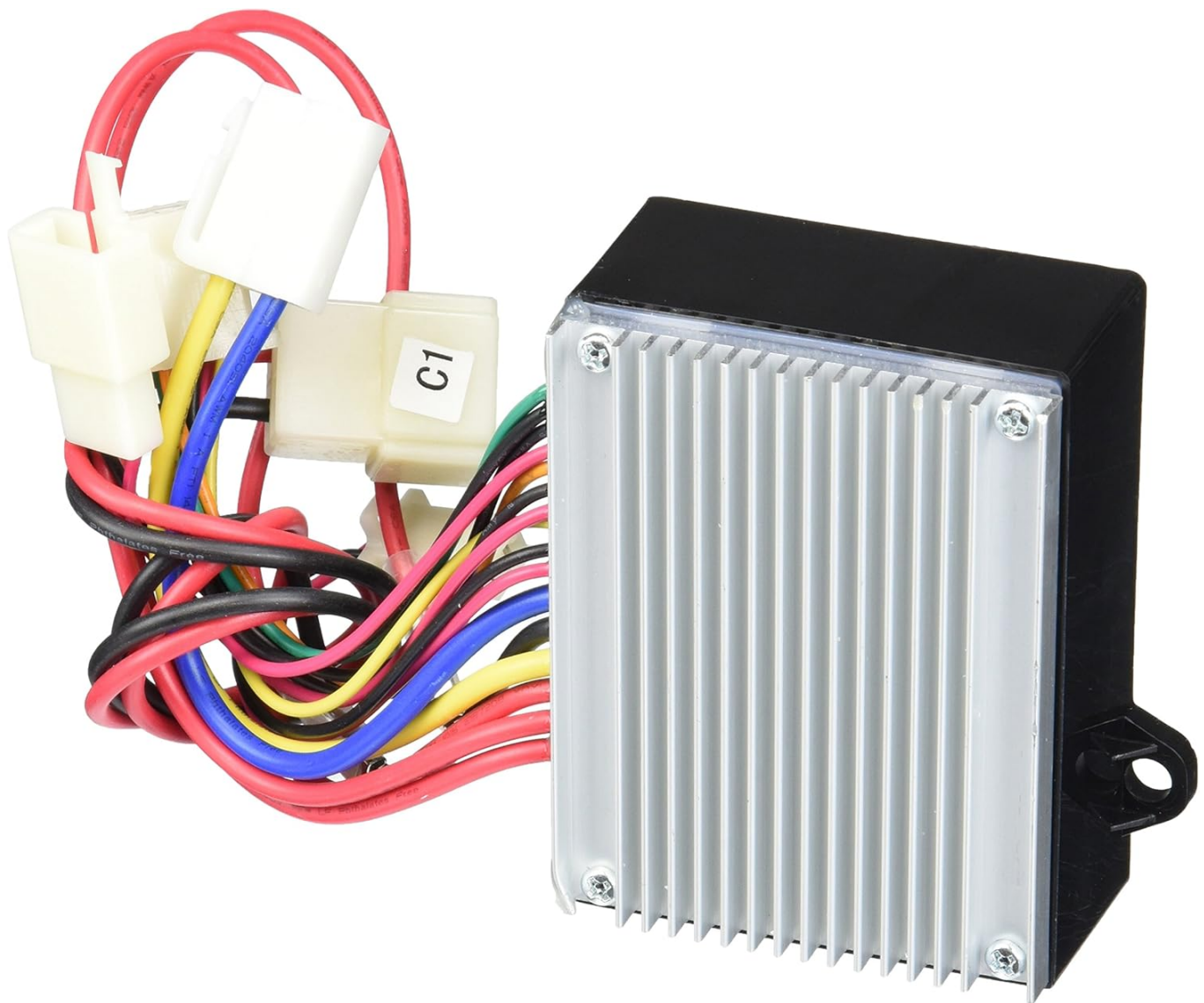
[Home](#) » [Razor](#) » Razor W25143400015 Crazy Cart Control Module Installation Guide 

Contents

- [1 Razor W25143400015 Crazy Cart Control Module](#)
- [2 Specifications](#)
- [3 Installation And Usage Steps](#)
- [4 CONTACT INFORMATION](#)
- [5 FAQs](#)
- [6 Documents / Resources](#)
 - [6.1 References](#)



Razor W25143400015 Crazy Cart Control Module



Specifications

- **Model Number:** W25143400015 W25143499164
- **Tools Required (Not included):**
 1. 5 mm Allen wrench
 2. 10 mm wrench
 3. Phillips screwdriver

Installation And Usage Steps

WARNING

CAUTION: To avoid potential shock or other injury, turn power switch OFF and disconnect charger before removing or installing the control module. Failure to follow these steps in the correct order may cause irreparable damage.

- **Step 1** Using a 5 mm Allen wrench, loosen the four (4) hex bolts that attach the seat to the frame (Figure 1a) and remove seat. Remove the two (2) hex bolts on the Drift Bar cover (Figure 1b) and remove.



Figure 1a



Figure 1b

- **Step 2** Using a 5 mm Allen wrench and a 10 mm wrench, loosen the two (2) hex bolts on the side of the battery cover (Figure 2a) and the two (2) locknuts, located underneath the unit (Figure 2b).



Figure 2a

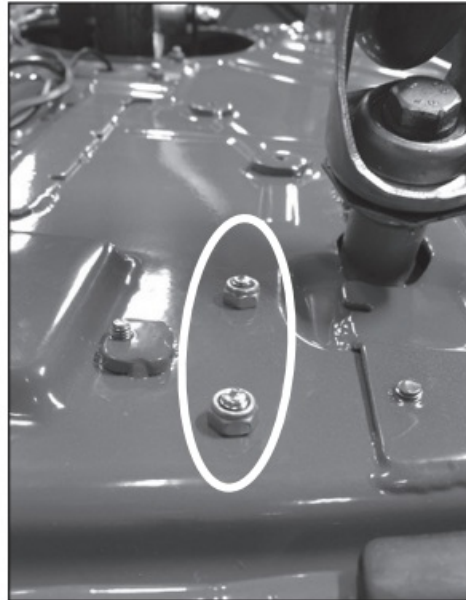


Figure 2b

- **Step 3** Remove the battery cover by lifting up the right side first then slide off. Be careful not to pull any of the wires that are attached to the cover.

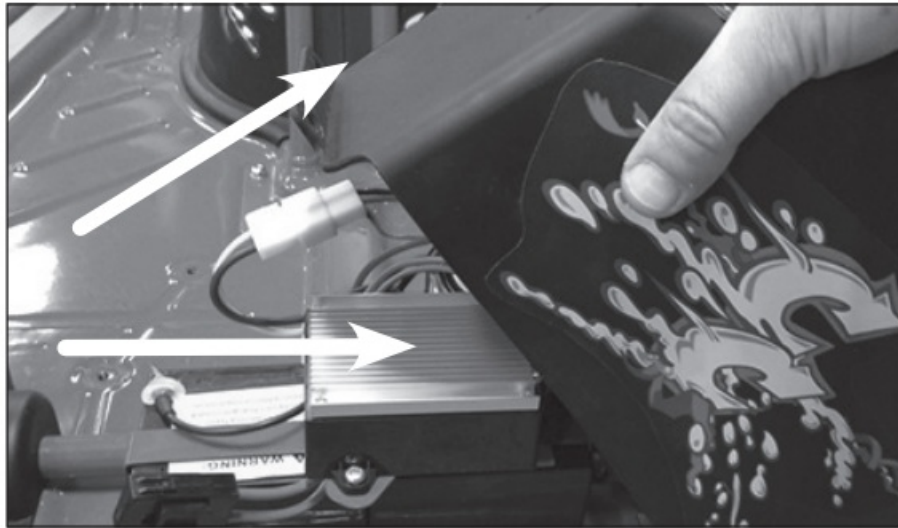


Figure 3

- **Step 4** Using a Phillips screwdriver, loosen the two (2) screws that are holding the control module to the battery strap.

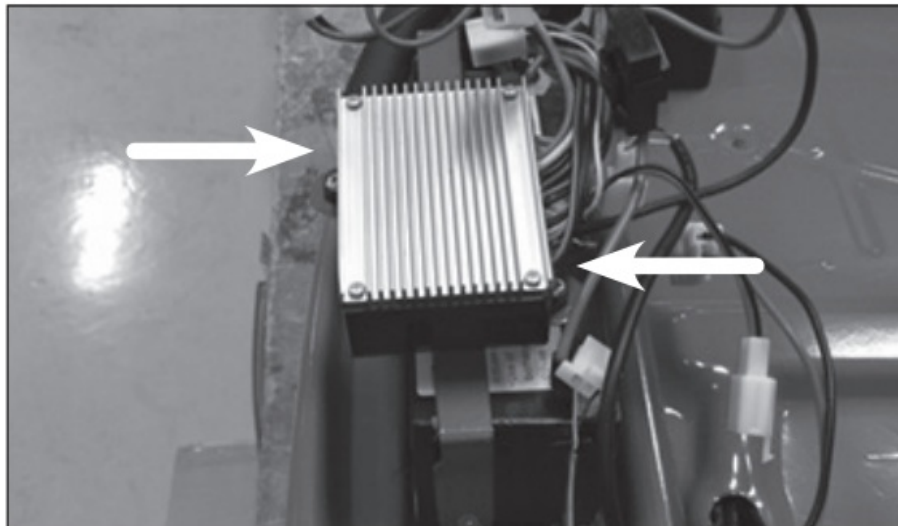


Figure 4

- **Step 5** Disconnect the five (5) plastic wire connectors on the control module by depressing the tab on each connector.

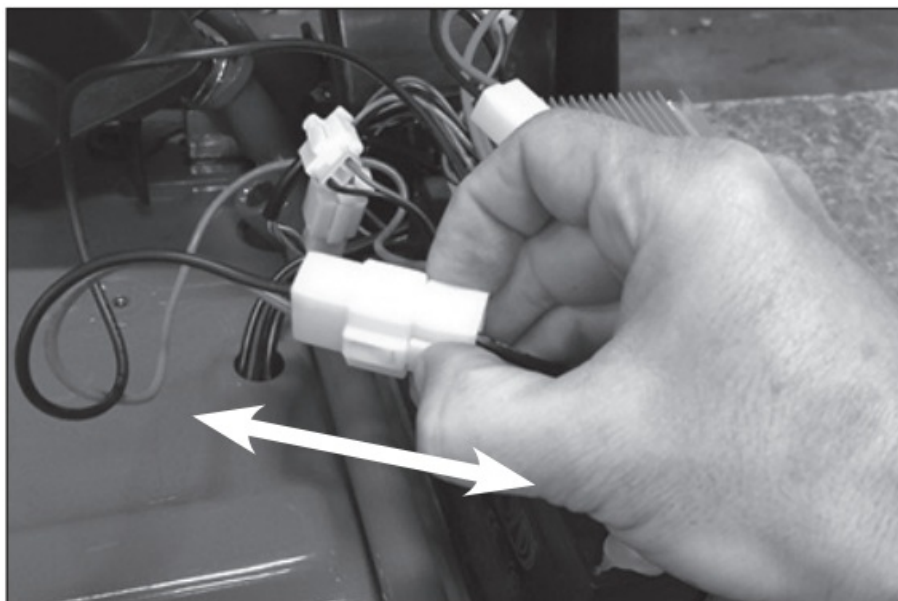


Figure 5

- **Step 6** Carefully disconnect the two (2) remaining connectors on the control module from the on/off switch and remove the control module. Note: When installing the new control module, make sure to connect the two (2) wires, that go to the on/off switch, on the two (2) silver color prongs (no particular order).

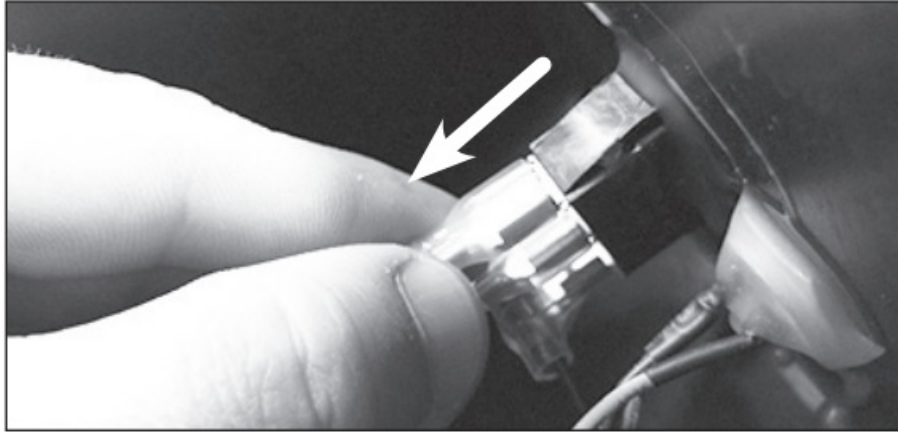


Figure 6

- **Step 7**
 - Reverse steps 1 through 6 to install a replacement control module.
 - **ATTENTION:** Charge the battery 12 hours before initial use.


CONTACT INFORMATION

- **Need Help?** Visit our website at www.razor.com or call toll-free at [866-467-2967](tel:866-467-2967) Monday – Friday 8:00 AM – 5:00 PM PST.

FAQs

- **Q: What should I do if I encounter issues during the installation process?**
 - **A:** If you encounter any difficulties or have questions during the installation, visit our website at www.razor.com or call toll-free at [866-467-2967](tel:866-467-2967) Monday – Friday between 8:00 AM – 5:00 PM PST for assistance.

Documents / Resources

	<p>Razor W25143400015 Crazy Cart Control Module [pdf] Installation Guide W25143400015, W25143499164, W25143400015 Crazy Cart Control Module, Crazy Cart Control Module, Cart Control Module, Module</p>
---	---

References

-  [Razor | Scooters and Ride-ons for the whole family](#)
- [User Manual](#)

