

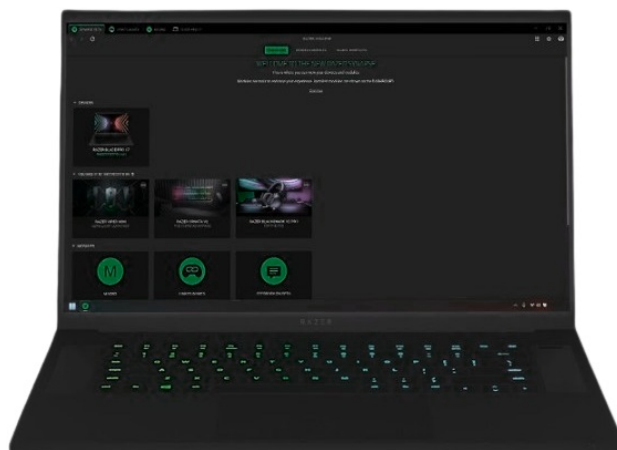


Contents [[hide](#)]

- [1 RAZER Synapse 4 dvanced Device Control and Lighting Software](#)
- [2 Specifications](#)
- [3 PROFILE MIGRATION](#)
- [4 Improved System Stability](#)
- [5 Razer Chroma™ RGB](#)
- [6 Product Usage Instructions](#)
- [7 Frequently Asked Questions](#)
- [8 Documents / Resources](#)
 - [8.1 References](#)



RAZER Synapse 4 dvanced Device Control and Lighting Software



Specifications

- **Brand:** Razer

- **Product Type:** Peripherals
- **Software:** Razer Synapse 4

Advanced Device Control

Customize and control all your Razer devices from one powerful platform. Whether you're remapping buttons, creating macros, or fine-tuning performance settings, Synapse provides every tool you need to personalize your gear to your playstyle.

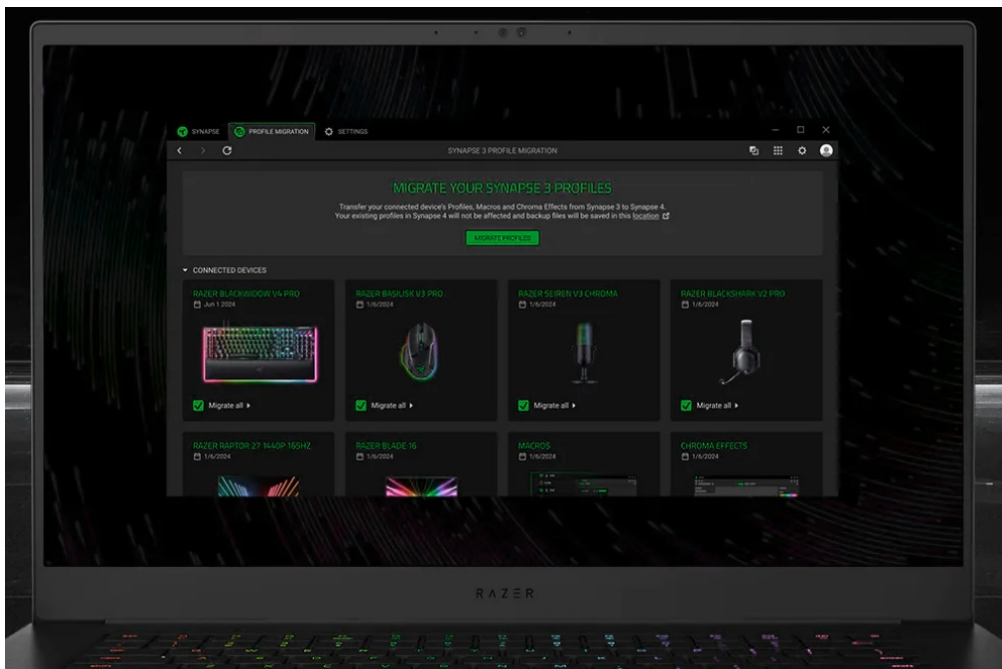
Faster Smoother Smarter

Rewriting the rulebook on efficiency, the next evolution of Razer Synapse boasts a fresh, multi-threaded architecture that's up to 30% faster*. Experience unparalleled speed, fluidity, and stability with a streamlined interface that empowers users with swift navigation, enabling independent installations and precise settings configuration.

- Performance specifications as compared to Synapse 3. Testing was conducted by Razer's technical team in July 2023 using a desktop with Intel i5 8600K CPU, 8GB RAM, and nVidia GeForce GTX 1060 GPU under normal conditions. Actual improvement may be less and can vary by usage, software, power settings, and other conditions.

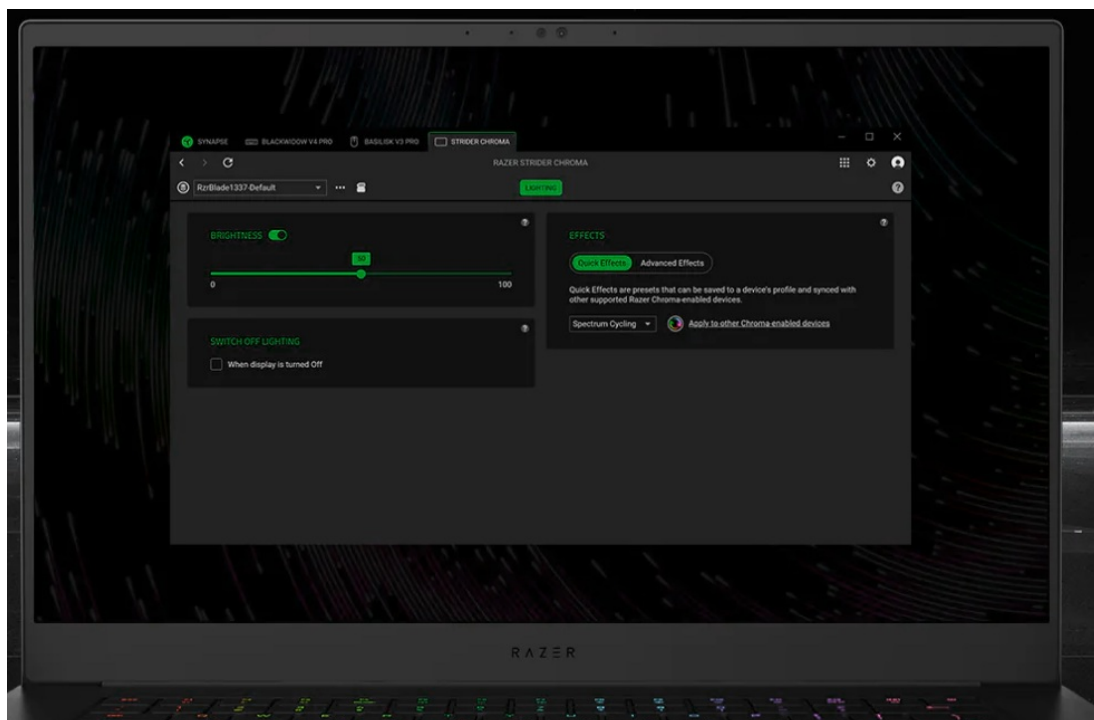
PROFILE MIGRATION

Effortlessly transfer your settings with one click. Synapse 4 now has a sleek tool to bring over your Synapse 3 Profiles, Macros, and Chroma Effects. When upgrading from Synapse 3 to Synapse 4, the Profile Migration tool in Synapse 4 automatically detects and helps manage the transfer of your Synapse 3 profiles in one click. Prefer a fresh start? Use the tool to handpick only the Profiles you wish to migrate.



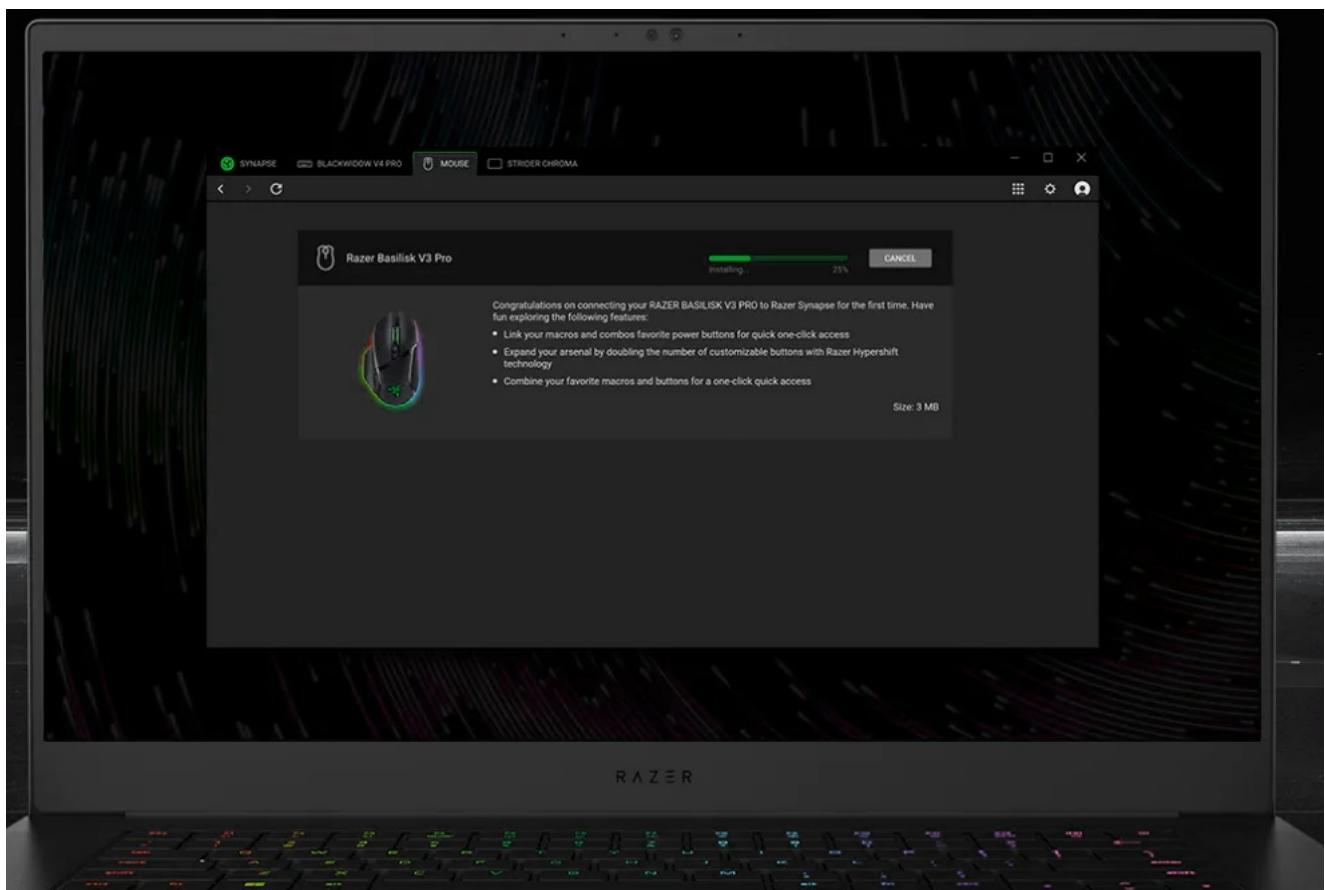
Faster System Performance

Overall processing is 30% faster than Synapse 3. You will be able to get things done quicker with improved speed on some of the most popular tasks like macro creation, settings configuration, and driver installation.



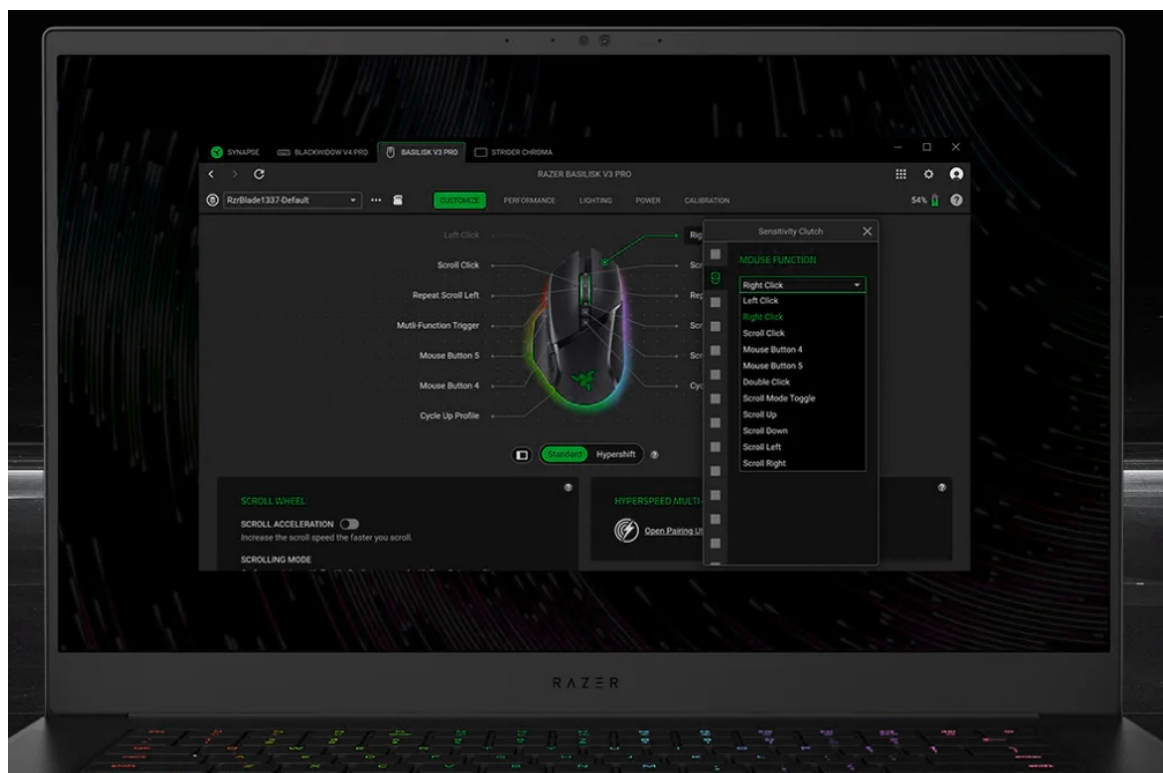
Improved System Stability

There's a brand new multi-threaded architecture, enabling processes to function independently. Devices are compartmentalized for increased stability. Now, installation and upgrading of one device doesn't interrupt other devices that are currently in use.



Brand New Modernized User Interface

We designed a brand-new interface that sports a modernized UI with simpler navigation, making navigation and customization faster. There are also floating tips, making it easier to quickly configure settings. You will also be able to manage additional settings in one place.

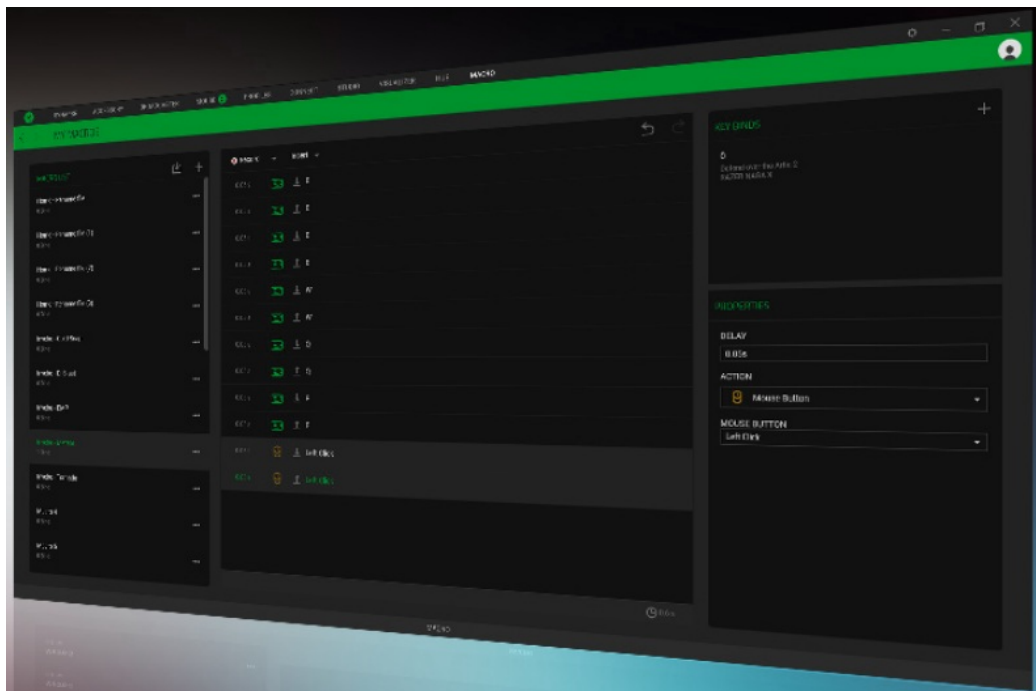


Fan Favorite Features Included

Fan favorite features are included like Hypershift which programs a single button to temporarily unlock a secondary set of functions on top of your existing button assignments, Rapid Trigger to help you perform rapid key-strokes with less effort, and Creating Advanced Macros which are strings of complex button presses to precisely execute game-winning combinations with a single click.

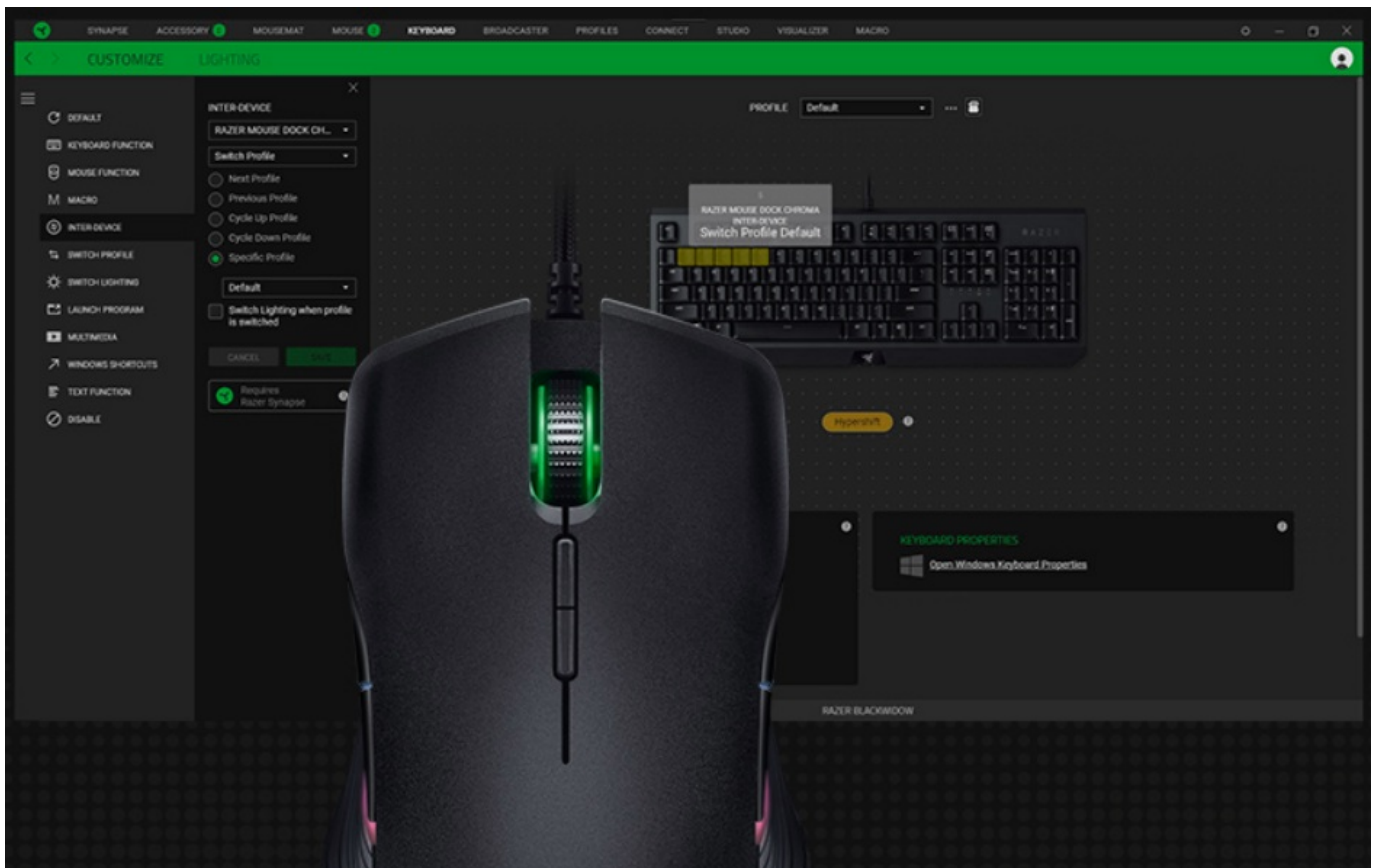
Advanced Macro Capabilities

Bring powerful macros to your favorite games with Razer Synapse 3. Easily create a string of complex button presses, and then precisely execute game-winning combinations with a single click.



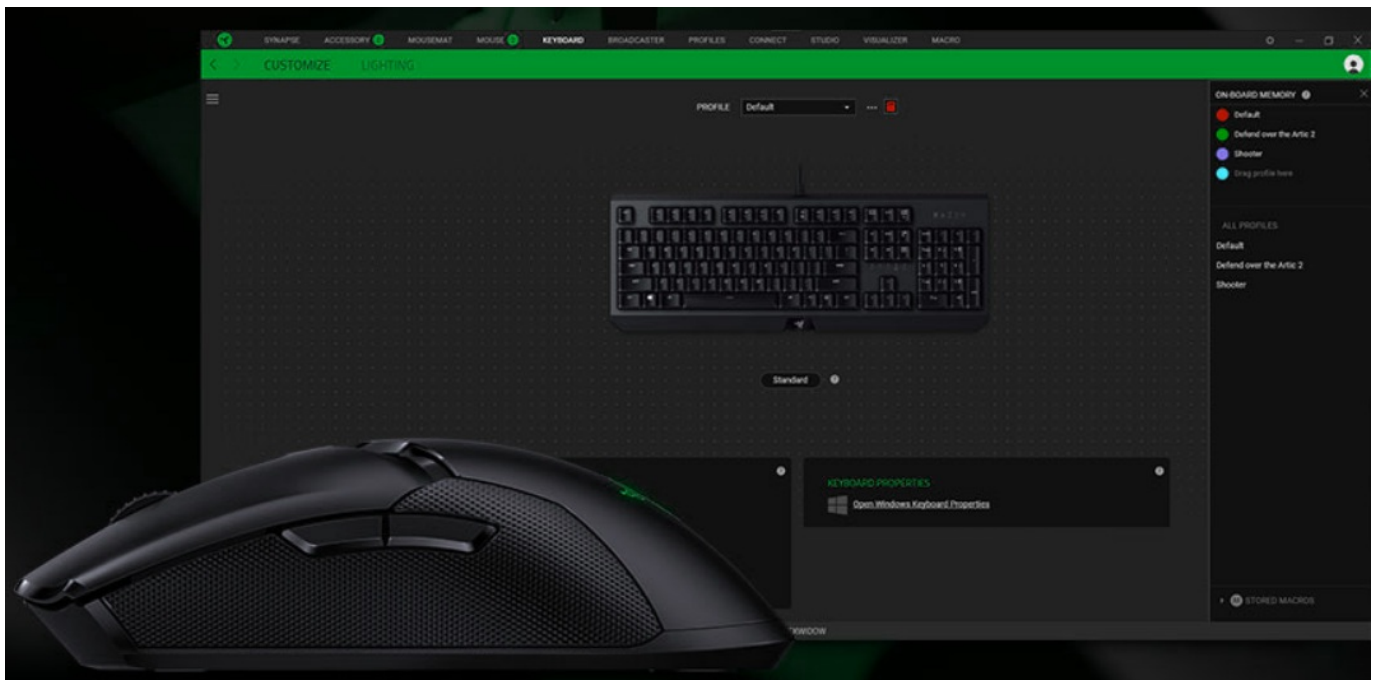
Razer Hypershift

Simply press a single button to temporarily unlock a secondary set of functions on top of your existing button assignments, effectively doubling the number of customizable buttons on your device.



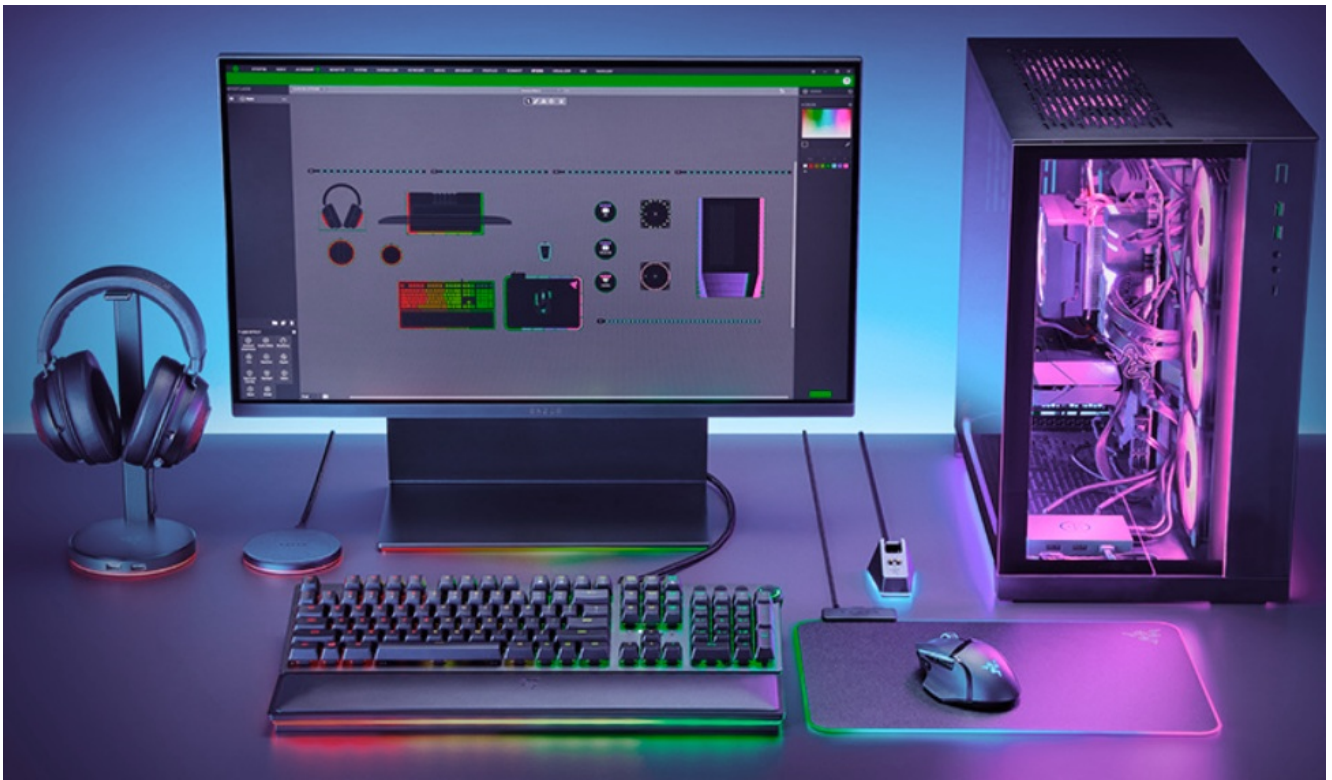
Hybrid On-board And Cloud Storage

Rebind buttons, assign macros, and automatically save all your profile configurations to the cloud—or save up to 4 profiles via on-board storage.



Razer Chroma™ RGB

Make your desk a canvas with the lighting effects in Chroma Studio or create your own and sync up your devices, games and platforms with Chroma Connect. For a truly immersive experience while gaming or listening to music, activate your Chroma Visualizer and let it take control of your lighting.



Product Usage Instructions

Factory Resetting Razer Peripherals in Razer Synapse 4

1. Open the Razer Synapse 4 software on your computer.
2. Locate the settings or options menu within the software.
3. Look for the option to reset or restore factory settings for your peripherals.
4. Follow the on-screen instructions to confirm the factory reset process.
5. Wait for the reset process to complete, and then restart your peripherals.

Frequently Asked Questions

Why would I need to factory reset my Razer peripherals?

Factory resetting can help resolve issues with performance, connectivity, or customization settings on your Razer peripherals.


Will factory resetting delete all my custom settings?

Yes, factory resetting will revert your peripherals to their original factory settings, deleting any custom configurations you have set up.

Can I undo a factory reset on my Razer peripherals?


No, once you perform a factory reset, the process is irreversible, and you will need to reconfigure your settings from scratch.


Documents / Resources

	<p>RAZER Synapse 4 dvanced Device Control and Lighting Software [pdf] In structions</p> <p>Advanced Device Control, Synapse 4 Advanced Device Control and Lighti ng Software, Advanced Device Control and Lighting Software, Software</p>
---	---

References

- [User Manual](#)

 Razer

 Advanced Device Control, Advanced Device Control and Lighting Software, Razer, Software, Synapse 4 Advanced Device Control and Lighting Software

Leave a comment

Your email address will not be published. Required fields are marked *

Comment *

Name

Email

Website

☐ Save my name, email, and website in this browser for the next time I comment.

Post Comment

Search:

e.g. whirlpool wrf535swhz

Search

[Manuals+](#) | [Upload](#) | [Deep Search](#) | [Privacy Policy](#) | [@manuals.plus](#) | [YouTube](#)

This website is an independent publication and is neither affiliated with nor endorsed by any of the trademark owners. The "Bluetooth®" word mark and logos are registered trademarks owned by Bluetooth SIG, Inc. The "Wi-Fi®" word mark and logos are registered trademarks owned by the Wi-Fi Alliance. Any use of these marks on this website does not imply any affiliation with or endorsement.