



Razer Tomahawk ATX Manual and FAQ

[Home](#) » [Razer](#) » Razer Tomahawk ATX Manual and FAQ 

Contents

1 Razer Tomahawk ATX Support

2 FAQ

2.1 At a Glance: Razer Tomahawk ATX | RC21-01420

2.2 Device Layout

2.3 Technical Specifications

2.4 When and where can I purchase the Razer Tomahawk ATX?

2.5 Is the Razer Tomahawk ATX supported by Razer Chroma?

2.6 What is the difference between the Razer Tomahawk ATX and the Tomahawk Mini-ITX?

2.7 How do I clean the dust filters?

3 How To

3.1 How to remove the glass panels on the Razer Tomahawk ATX?

3.2 How to remove the HDD tray on the Razer Tomahawk ATX?

4 Troubleshooting

4.1 Why does my Razer Chroma RGB Underglow not work?

4.2 Why does my ATX or E-ATX motherboard not completely fit or the cables are blocking the board in the Razer Tomahawk ATX?

5 Hardware

5.1 Where can I find the accessories for the Razer Tomahawk ATX?

5.2 What is inside the accessories pack?

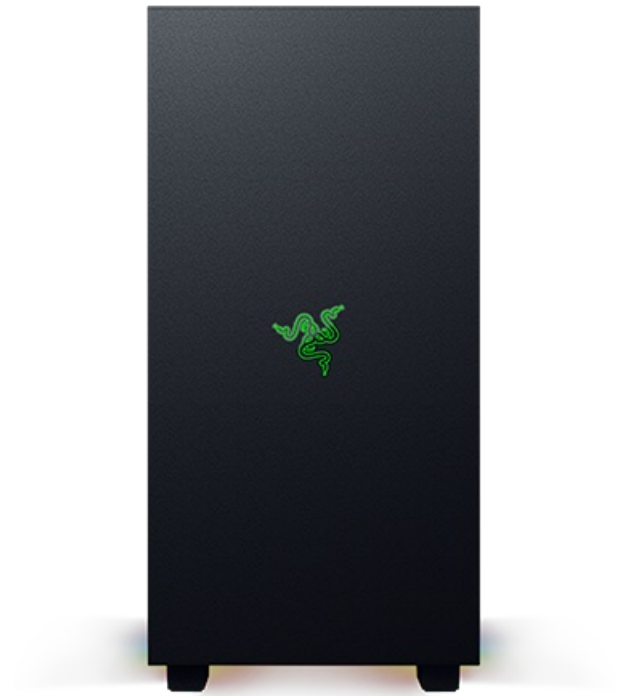
5.3 Does the Razer Tomahawk PC Chassis support a water-cooling system?

5.4 What motherboards are compatible with the Razer Tomahawk ATX?

5.5 How many expansion slots does the Razer Tomahawk ATX have?

5.6 Downloads

5.7 Related Posts



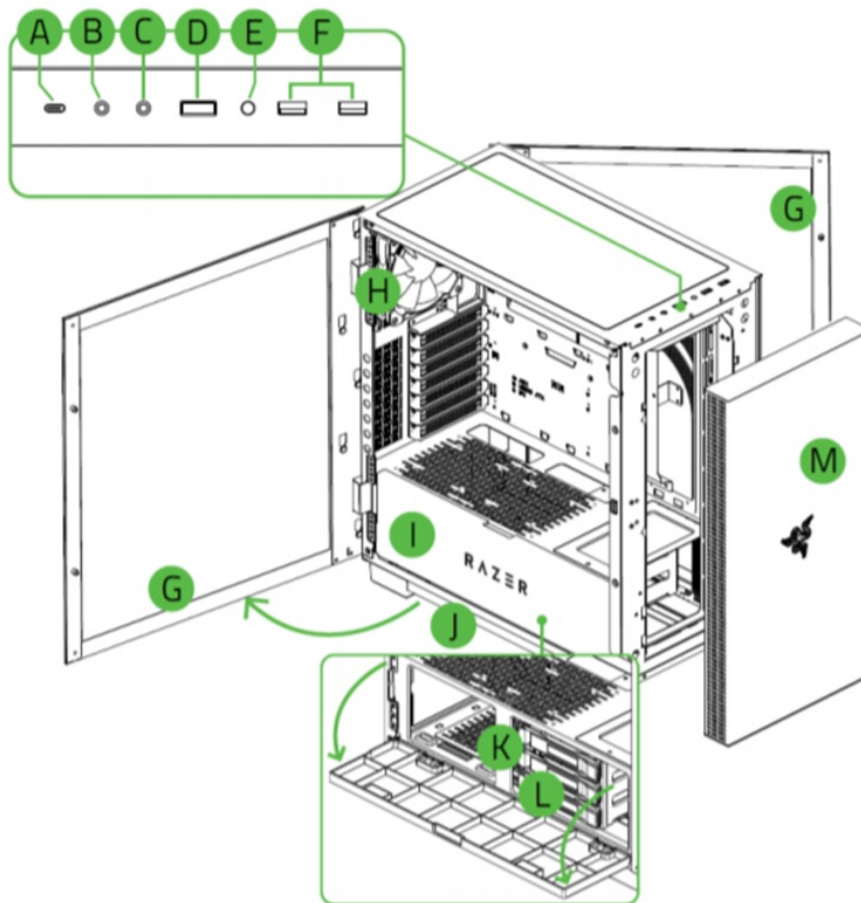
FAQ

At a Glance: Razer Tomahawk ATX | RC21-01420

To build the ultimate gaming desktop, it begins with a frame that can support the performance within. Meet the Razer Tomahawk ATX – a mid-tower metal gaming chassis that exudes both form and function, equipped with premium features to accommodate your idea of a perfect rig, whatever it may be.

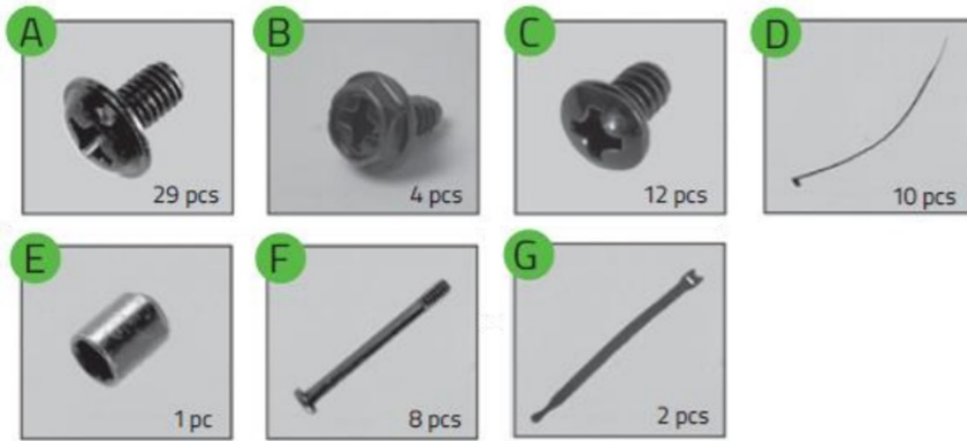


Device Layout



- A. USB Type C port (up to 3.2 Gen 2)
- B. 3.5mm audio jack
- C. 3.5mm mic jack
- D. Power Button
- E. Reset Button
- F. USB Type A ports (up to 3.2 Gen 1)
- G. Detachable swivel glass doors
- H. 120mm fan
- I. Inner flip panel
- J. Underglow lighting Powered by Razer Chroma RGB
- K. Removable HDD / SSD trays x3
- L. Movable drive rack
- M. Detachable front panel

▪ Accessories Box*



- A. Screws for motherboard and 2.5" SSD mount x29
- B. Screws for PSU mount x4
- C. Screws for 3.5" HDD mount x12
- D. Cable ties x10
- E. Tool for standoff bolt
- F. Screws for fan mount x8
- G. Hook and loop straps x2

**Extra items included for spare parts*

Technical Specifications

Chassis Form Factor	Mid-Tower
Supported Motherboards	<ul style="list-style-type: none"> • E-ATX • ATX • Micro-ATX • Mini-ATX
Case Material	SPCC Steel (0.8 mm) Thick and All Tempered Glass side panels
# of Expansion Slots	7 Expansion Slots
# of Supported Drives	<ul style="list-style-type: none"> • 3 x 3.5 in or 2.5 in HDD or SSD (Drive bay) • 2 x 2.5 in SSD (Drive plate)
Radiator Compatibility	Up to 360 mm
Maximum CPU Cooler Height	Up to 176 mm
Maximum GPU Length	Up to 384 mm
Front Panel I/O	<ul style="list-style-type: none"> • 2x USB3.2 Gen 1 Type-A Ports • 1x USB3.2 Gen 2 Type-A Port • 1x 3.5mm Microphone Jack • 1x 3.5mm Audio Jack • 1x Power Button • 1x Reset Button
Razer Chroma™ Support	Razer Chroma™ Underglow
Case Dimensions	19.47 in / 494.6 mm (Height) x 9.26 in / 235.4 mm (Width) x 18.70 in / 475 mm (Depth)
Weight	29.76 lbs / 13.5 kg

When and where can I purchase the Razer Tomahawk ATX?

The Tomahawk will be available from November 2020 onwards in All regions. Please stay tuned to www.razer.com for all the latest updates. You can also click on the “Notify Me” icon at [\[link\]](#) to receive email updates from Razer.

Is the Razer Tomahawk ATX supported by Razer Chroma?

Yes, the Tomahawk ATX features an underglow that is powered by Razer Chroma. Lighting effects can be configured via [Razer Synapse 3](#).

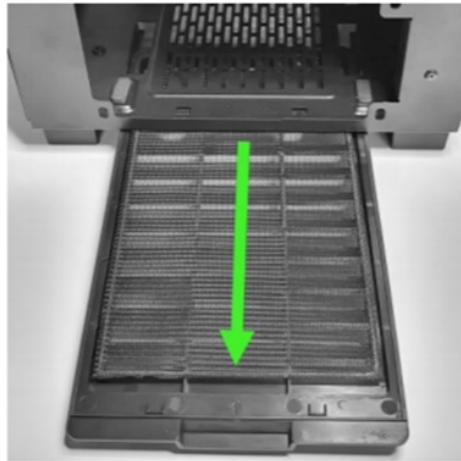


What is the difference between the Razer Tomahawk ATX and the Tomahawk Mini-ITX?

The Tomahawk ATX is a mid-tower designed for users that want the ultimate eSports gaming desktop and require more expansion slots and an ATX motherboard. While the Tomahawk Mini-ITX offers a simplistic design for those that are in search of a small footprint. It is designed for fast and easy PC builds with its easy access to magnetic doors and filters.

How do I clean the dust filters?

There are 2 dust filters located at the top and the bottom of the chassis. Remove the filters as shown below. Wash the filters with clean water, wipe it with a dry cloth, and reinstall the filters.

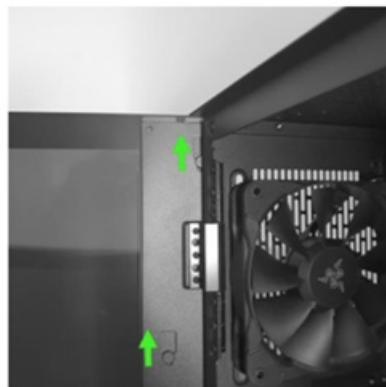
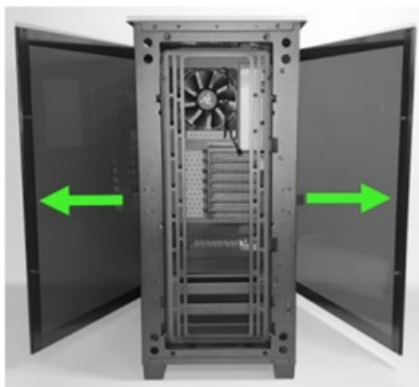


Note: Keep your chassis in optimal temperature by cleaning these dust filters as often as possible.

How To

How to remove the glass panels on the Razer Tomahawk ATX?

Open both detachable swivel glass doors, and then gently lift up to remove them.



How to remove the HDD tray on the Razer Tomahawk ATX?

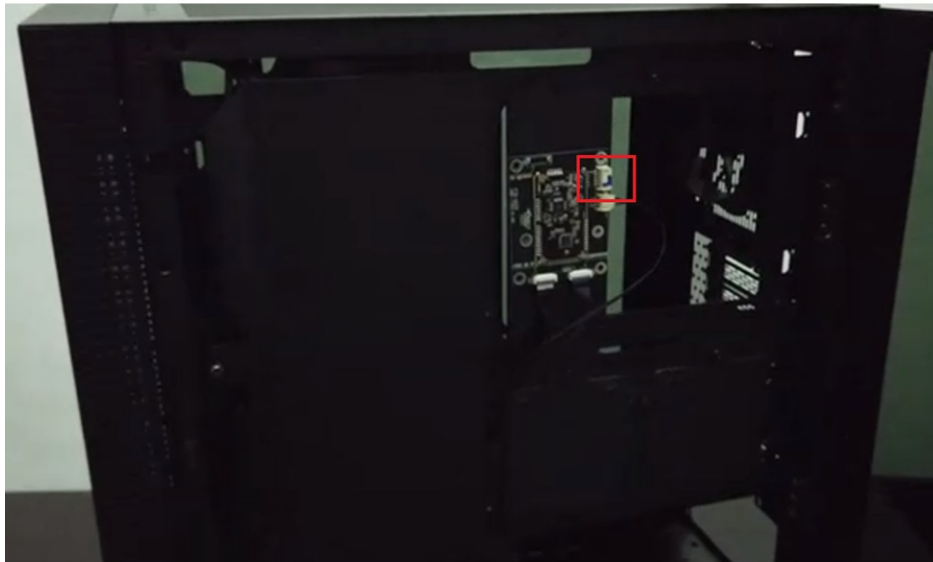
Push the fastener to unlock and gently pull out the tray.

Troubleshooting

Why does my Razer Chroma RGB Underglow not work?

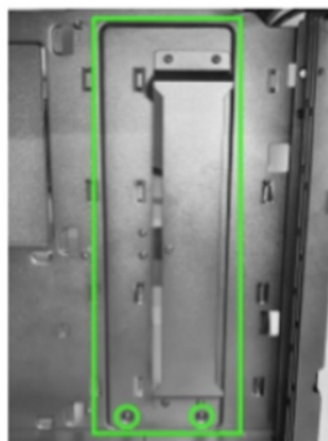
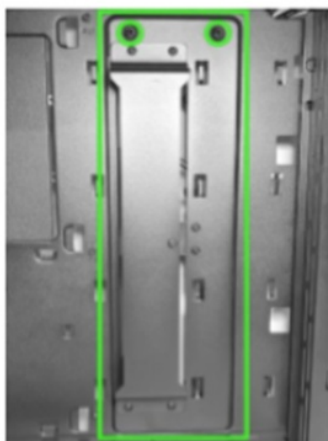
To ensure that the RAZER Chroma RGB Underglow is functioning properly, please check to see if you've

connected the USB2.0 Header for the Razer Chroma Underglow to your Motherboard. This can be found in the right-side panel as shown below.



Why does my ATX or E-ATX motherboard not completely fit or the cables are blocking the board in the Razer Tomahawk ATX?

Remove the cable cover from the inside of the chassis and rotate it 180 degrees and remount it to give additional space for cables and your motherboard.

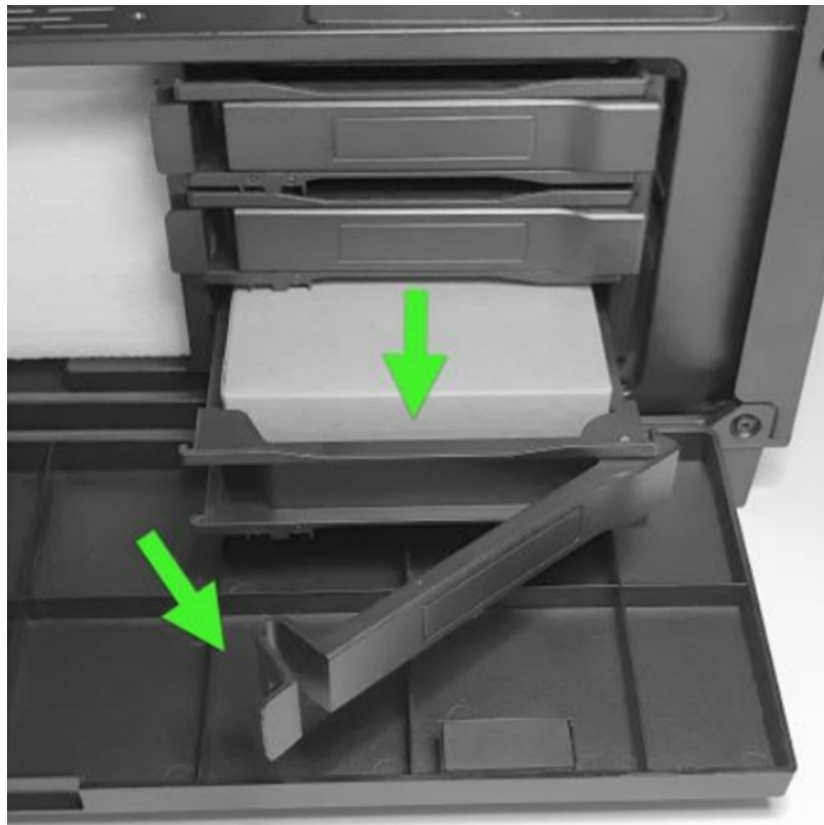


Please refer to your motherboard's user manual on how to install the IO cables for the chassis' top control panel.

Hardware

Where can I find the accessories for the Razer Tomahawk ATX?

The accessories pack can be found inside the bottom removable HDD/SSD Drive Tray.



What is inside the accessories pack?

The accessories pack consist of:

1. Screw for the motherboard and 2.5" SSD mount x29
2. Screws for PSU mount x4
3. Screws for 3.5" HDD mount x12
4. Cable ties x10
5. Tool for standoff bolt
6. Screws for fan mount x8
7. Hook and loop straps x2

▪ Accessories Box*



Does the Razer Tomahawk PC Chassis support a water-cooling system?

Yes, the Tomahawk ATX has multiple mount options on the front and top for liquid or air cooling.

What motherboards are compatible with the Razer Tomahawk ATX?

The following motherboards are compatible with the Tomahawk ATX:

- ITX
- Micro-ITX
- Standard ATX
- E-ATX (Max 280mm)

How many expansion slots does the Razer Tomahawk ATX have?

The Tomahawk ATX features 7 horizontal expansion slots.

Downloads

Razer Tomahawk ATX Installation Guide (English) – [Download](#)

Razer Tomahawk ATX Master Guide (English) – [Download](#)