



Razer Lancehead Wireless Manual and FAQ

[Home](#) » [Razer](#) » Razer Lancehead Wireless Manual and FAQ 

Contents

- 1 [Razer Lancehead Wireless Support](#)
- 2 [Common Questions](#)
 - 2.1 [Where can I find the Razer Lancehead Wireless product serial number?](#)
 - 2.2 [What is the button on the bottom of my Razer Lancehead Wireless for?](#)
- 3 [Troubleshooting](#)
 - 3.1 [The calibration settings on the Razer Lancehead Wireless mouse are resetting everytime I switch between wired and wireless modes. What should I do?](#)
- 4 [Hardware](#)
 - 4.1 [What is the form factor of the Razer Lancehead Wireless?](#)
- 5 [Software](#)
 - 5.1 [Is the Razer Lancehead Wireless supported by Razer Chroma™?](#)
 - 5.2 [Does the Razer Lancehead Wireless have onboard memory?](#)
 - 5.3 [What is Razer Lancehead Wireless' "On-The-Fly Sensitivity" and how do I configure it?](#)
 - 5.4 [How do I change the settings of my Razer Lancehead Wireless?](#)
 - 5.5 [Can I individually set the color for each LED on my Razer Lancehead Wireless?](#)
- 6 [Razer Lancehead Wireless Firmware Updater | RZ01-02570](#)
 - 6.1 [Applicable Models](#)
 - 6.2 [Step-by-step Process](#)
 - 6.3 [Downloads](#)
 - 6.4 [Related Posts](#)

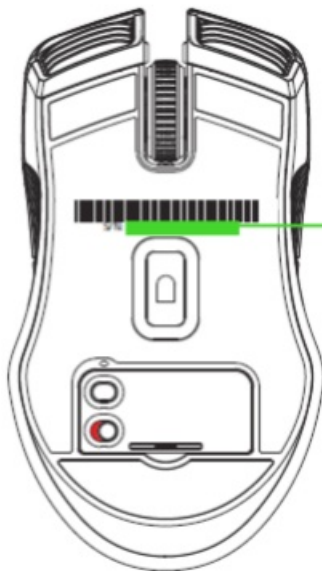
Razer Lancehead Wireless Support



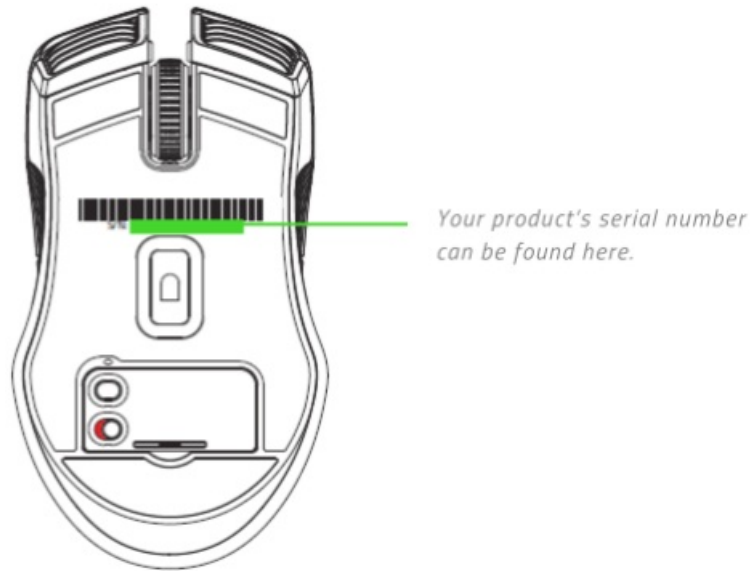
Common Questions

Where can I find the Razer Lancehead Wireless product serial number?

Turn the mouse over and you will find the product serial number on the product ID sticker just below the scroll wheel.



*Your product's serial number
can be found here.*



What is the button on the bottom of my Razer Lancehead Wireless for?

This button lets you cycle through on-board profiles stored on your Razer Lancehead Wireless via the Hybrid On-board and Cloud Storage feature of Razer Synapse 3.

Troubleshooting

The calibration settings on the Razer Lancehead Wireless mouse are resetting everytime I switch between wired and wireless modes. What should I do?

Please make sure to keep the mouse on the tracking surface when switching between wired and wireless modes.

Hardware

What is the form factor of the Razer Lancehead Wireless?

The Razer Lancehead Wireless features an ambidextrous design with enhanced rubber side grips.

Software

Is the Razer Lancehead Wireless supported by Razer Chroma™?

Yes. The Razer Lancehead Wireless is supported by Razer Chroma™.

Does the Razer Lancehead Wireless have onboard memory?

Yes, The Razer Lancehead Wireless can store up to five profiles from Razer Synapse 3.

What is Razer Lancehead Wireless' "On-The-Fly Sensitivity" and how do I configure it?

The "On-The-Fly Sensitivity" adjustment allows you to set a button of your choice on the Razer Lancehead Wireless to enable the feature. If a button has been assigned to "On-The-Fly Sensitivity," pressing and holding the assigned button down while moving the scroll wheel up or down will produce a bar on the lower right-hand corner of your screen allowing you to adjust your sensitivity settings by steps of 100 DPI.

How do I change the settings of my Razer Lancehead Wireless?

To change the settings of your Razer Lancehead Wireless – including changing key binds, lighting, macros and other functions, please download and install [Razer Synapse 3](#).

Can I individually set the color for each LED on my Razer Lancehead Wireless?

Yes, the LEDs of the Razer Lancehead Wireless can be customized individually via the “Studio” in Razer Synapse 3.

To see more general faqs for peripherals, go to the [MICE FAQs](#).

Razer Lancehead Wireless Firmware Updater | RZ01-02570

Applicable Models

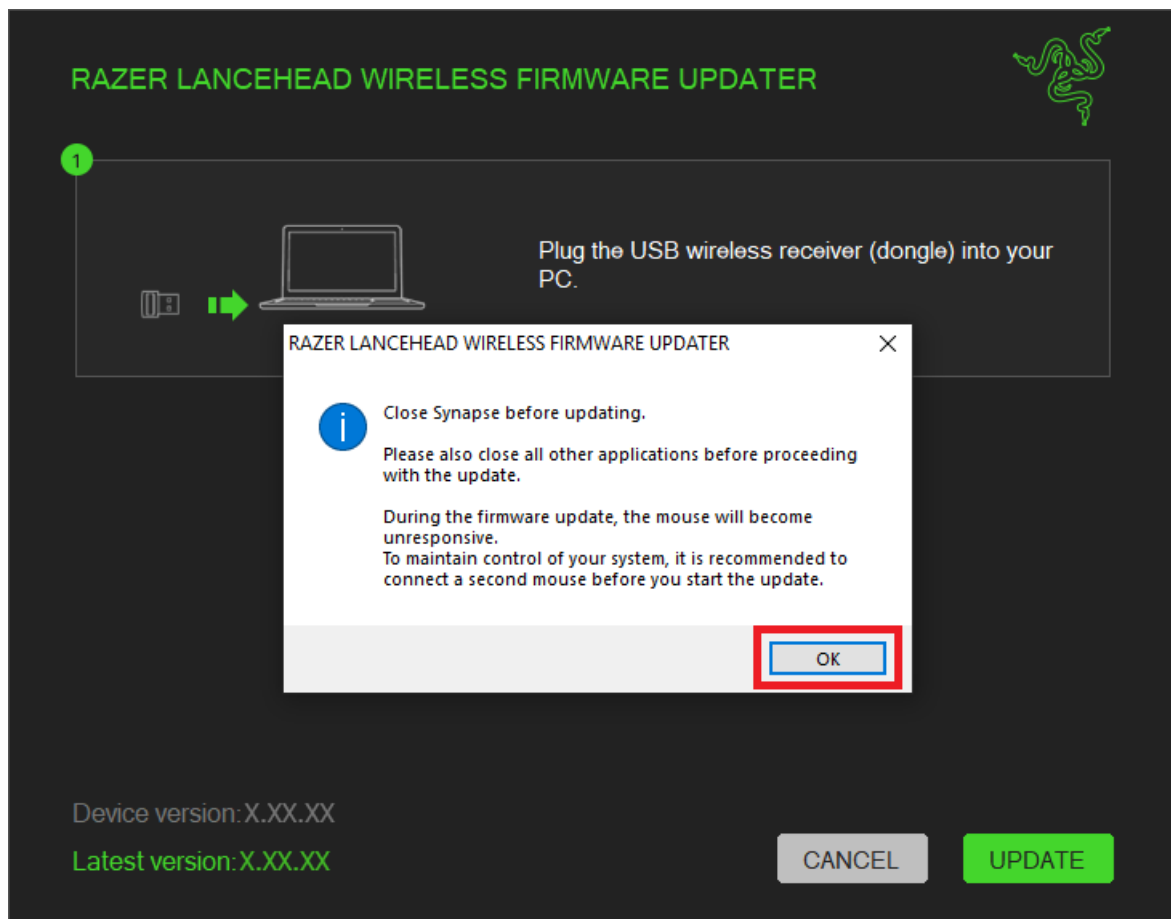
- RZ01-02570

[Firmware v1.02.01_r2](#)

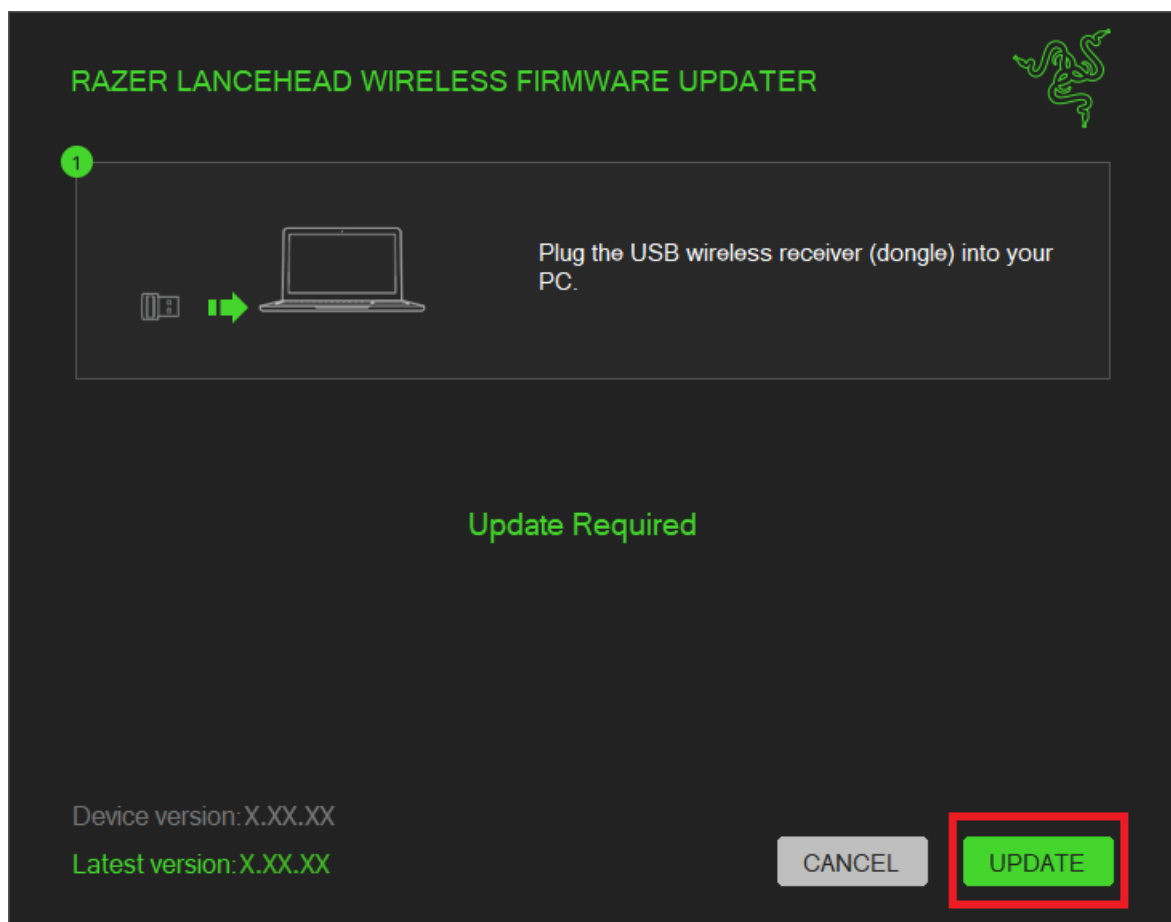
- [Download](#) | May 27, 2019
- Fixed an issue where a long Macro assignment doesn't play correctly.
- Fixed an issue where the button assigned with Turbo key eventually stops responding after several continuous presses

Step-by-step Process

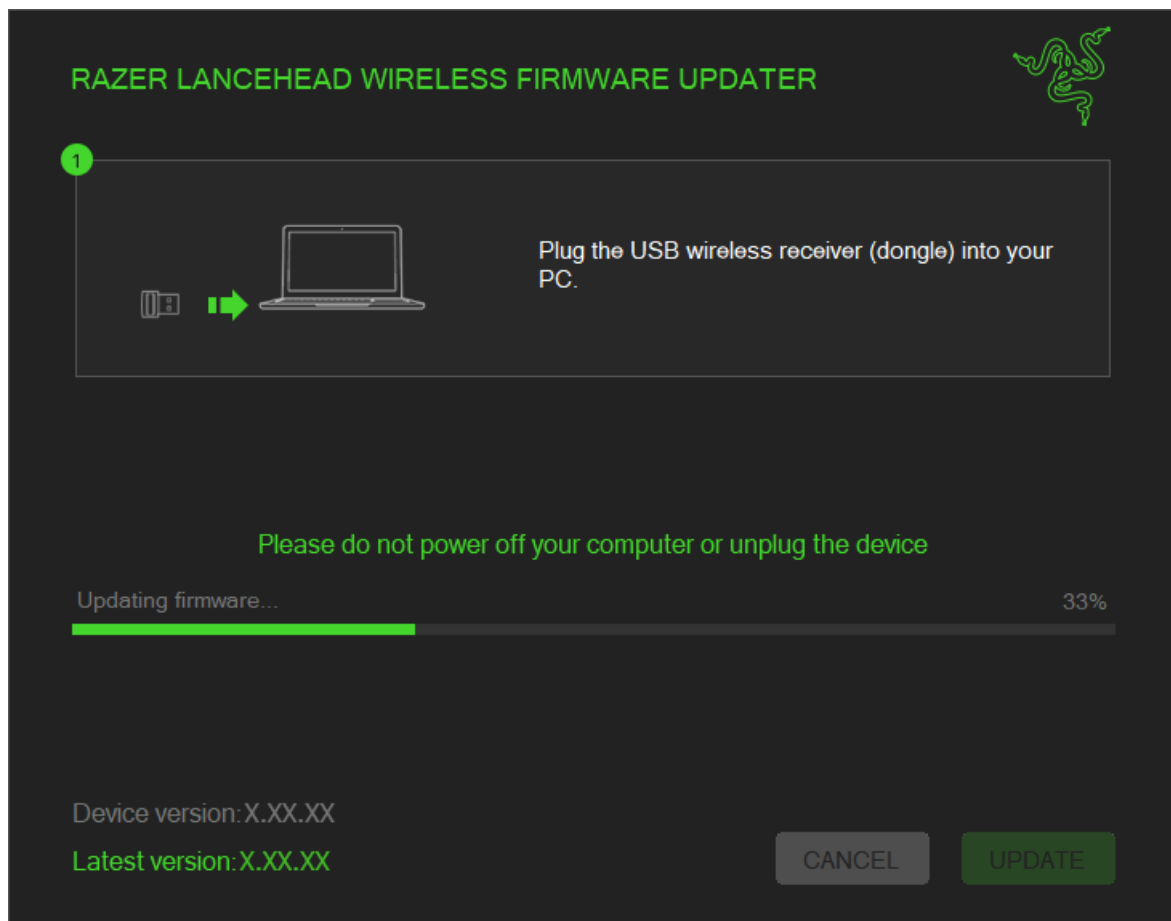
1. If you have not already done so, download the latest firmware update at the link above.
2. Close Razer Synapse before launching the firmware update.



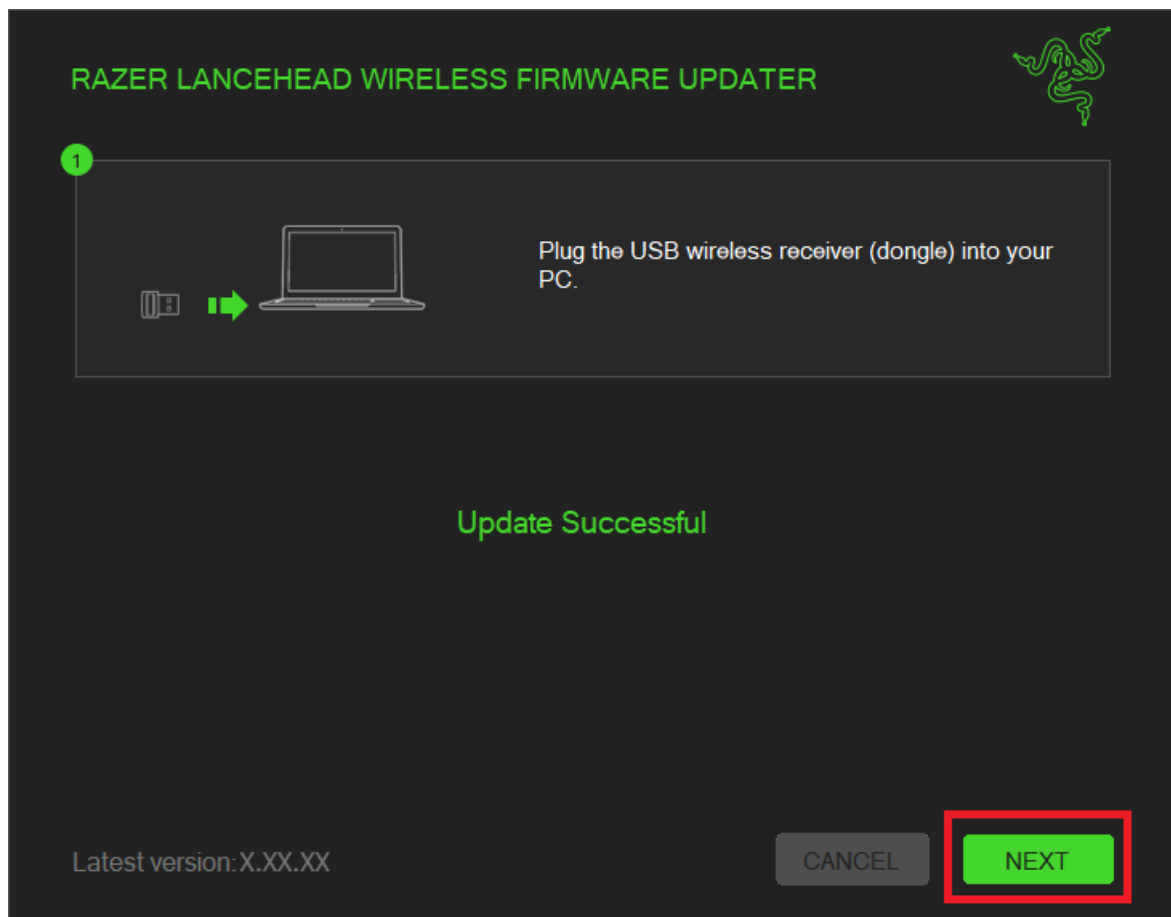
3. Plug the USB wireless receiver (dongle) into your PC and click "Update" to begin the update process.



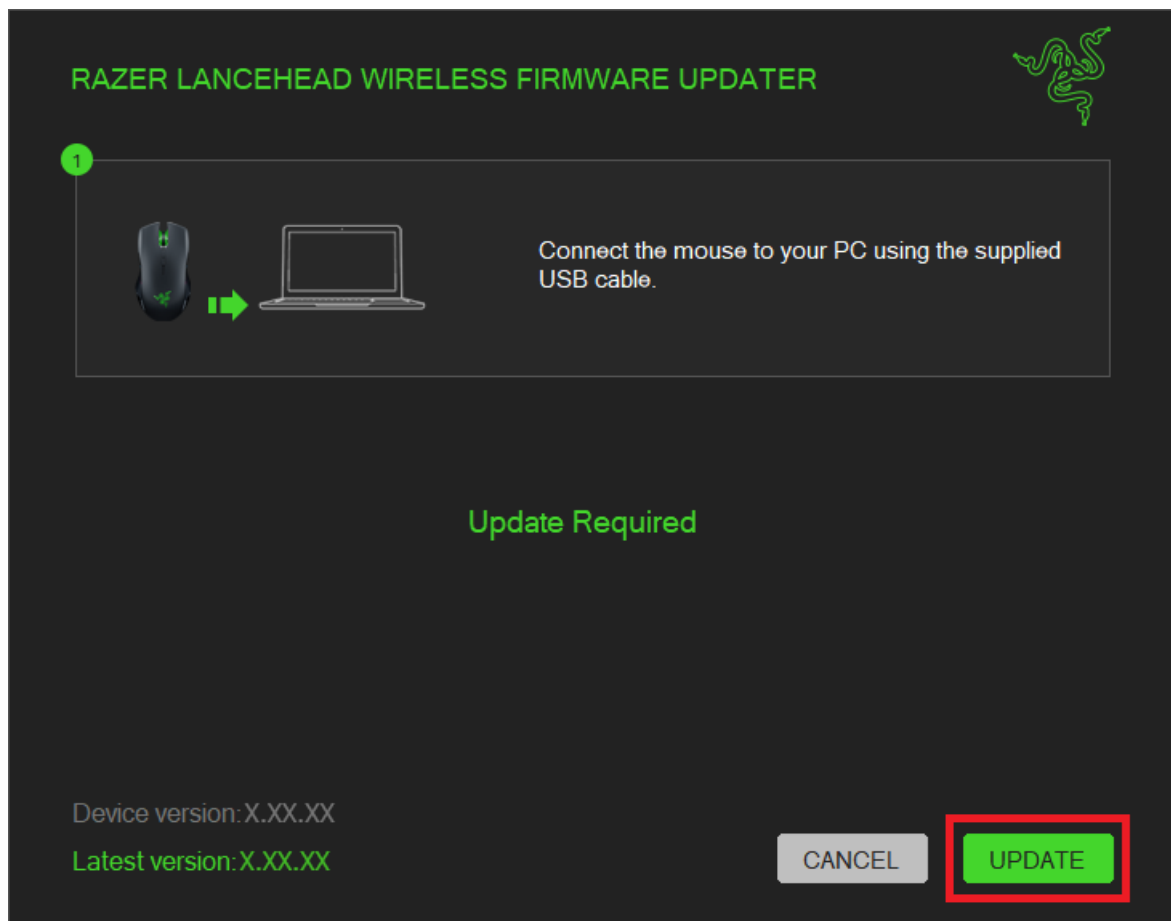
4. The progress bar should begin to move.



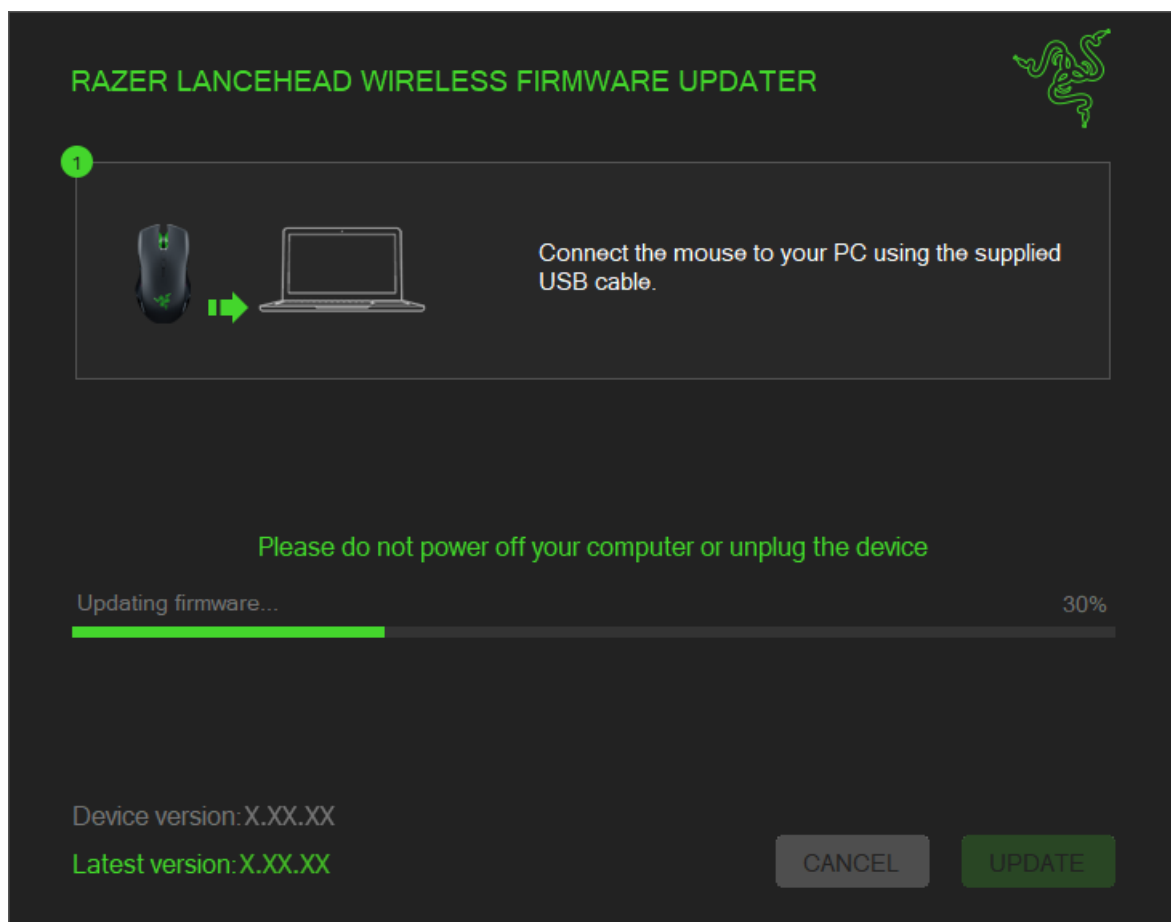
5. You should see a confirmation message once the firmware update has been successfully applied to the dongle. Click "NEXT" to proceed.



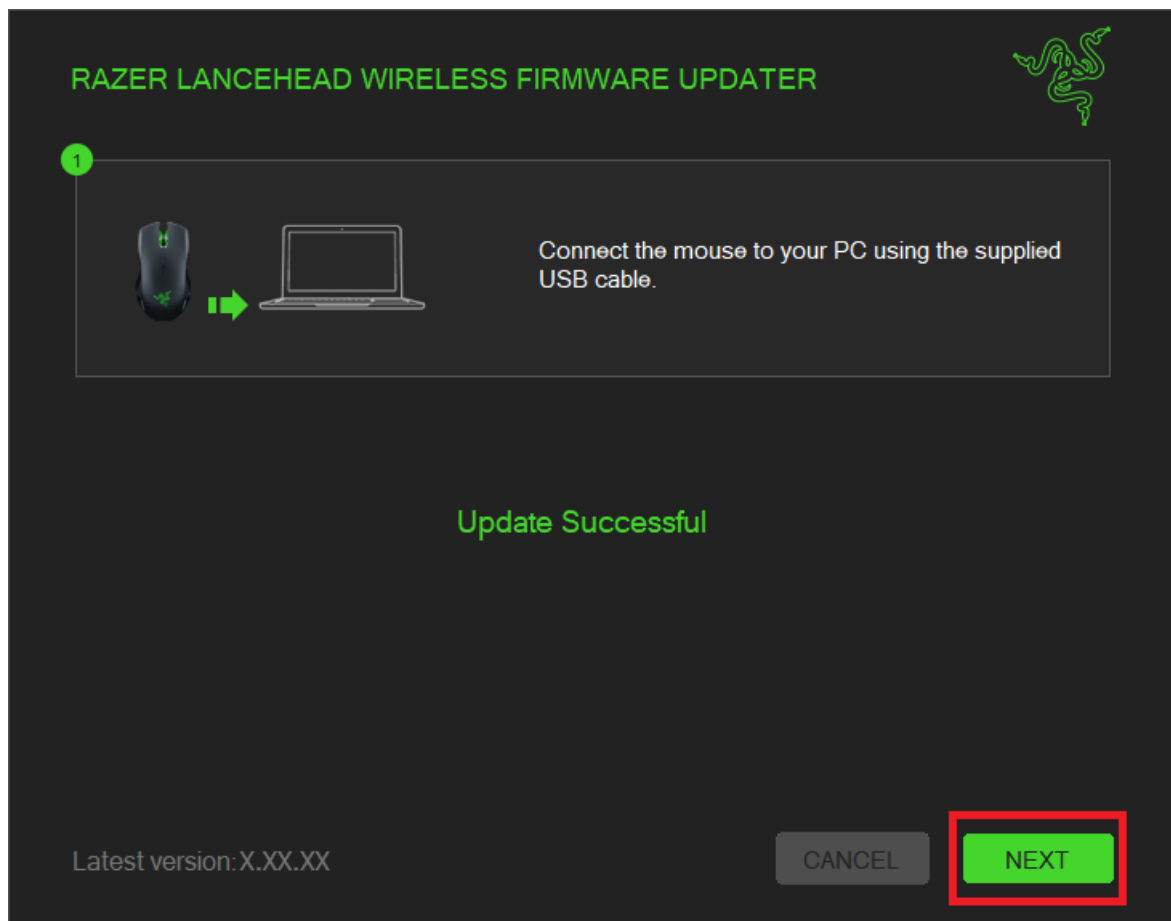
6. Connect the Lancehead Wireless using the supplied USB cable into your computer and click "UPDATE".



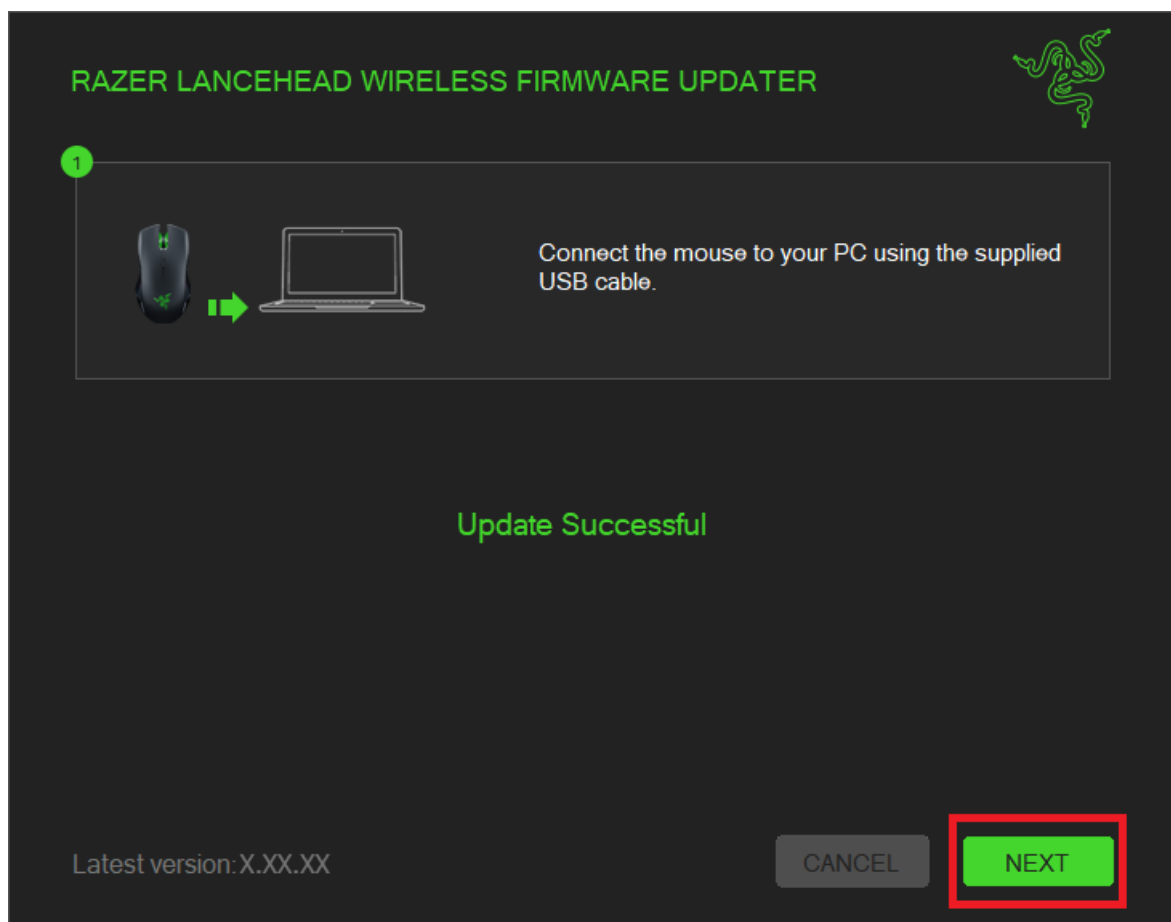
7. The progress bar should begin to move.



8. You should see a confirmation message once the firmware update has been successfully applied to the mouse. Click "Next" to proceed.



9. Once the firmware has been successfully updated, click “Close” to close the updater.



Downloads

Razer Lancehead Wireless Firmware Updater | RZ01-02570 – [Download](#)

Razer Lancehead Wireless Manual (Portuguese-Brazilian) – [Download](#)

Razer Lancehead Wireless Manual (Spanish) – [Download](#)

Razer Lancehead Wireless Manual (French) – [Download](#)

Razer Lancehead Wireless Manual (German) – [Download](#)

Razer Lancehead Wireless Manual (English) – [Download](#)

Manuals+.