



Razer Basilisk Essential Manual and FAQ

[Home](#) » [Razer](#) » Razer Basilisk Essential Manual and FAQ 

Contents

1 Razer Basilisk Essential Support

2 Hardware

- 2.1 Is the Razer Basilisk Essential supported by Razer Chroma™?
- 2.2 What lighting modes are available on the Razer Basilisk Essential?
- 2.3 Does the Razer Basilisk Essential come with a braided cable?
- 2.4 Does the Razer Basilisk Essential have a tilt click scroll wheel?
- 2.5 Does the Razer Basilisk Essential have onboard memory?
- 2.6 What is the form factor of the Razer Basilisk Essential?
- 2.7 How many buttons does the Razer Basilisk Essential have?
- 2.8 What is “On-The-Fly Sensitivity” and how do I configure it?
- 2.9 Does the Razer Basilisk Essential feature onboard memory?
- 2.10 What is the Multi-Function Paddle on the Razer Basilisk Essential for?
- 2.11 Can I change the length of the Multi-Function Paddle on my Razer Basilisk Essential?
- 2.12 Is the Rubber Thumb Cap on the Razer Basilisk Essential removable?
- 2.13 Will the DPI clutch on the Razer Basilisk fit on the Basilisk Essential?

3 Software

- 3.1 Is Razer Basilisk Essential supported by Synapse 2 or Synapse 3?
- 3.2 How do I change the settings of my Razer Basilisk Essential?

4 Razer Basilisk Essential Firmware Updater | RZ01-02650

- 4.1 Applicable Models
- 4.2 Step-by-step Process
- 4.3 Downloads
- 4.4 Related Posts

Razer Basilisk Essential Support



Hardware

Is the Razer Basilisk Essential supported by Razer Chroma™?

Yes, the Razer Basilisk Essential is supported by Razer Chroma™.

What lighting modes are available on the Razer Basilisk Essential?

The Razer Basilisk Essential features Spectrum Cycling, Breathing, Static, and Reactive.

Does the Razer Basilisk Essential come with a braided cable?

Yes, the Razer Basilisk Essential comes with a braided cable.

Does the Razer Basilisk Essential have a tilt click scroll wheel?

No, the Razer Basilisk does not feature a tilt click scroll wheel.

Does the Razer Basilisk Essential have onboard memory?

No, the Basilisk Essential does not have onboard memory.

What is the form factor of the Razer Basilisk Essential?

The Razer Basilisk Essential features a right-handed ergonomic form factor.

How many buttons does the Razer Basilisk Essential have?

The Razer Basilisk Essential has 7 buttons (plus scroll wheel up and scroll wheel down).f

What is “On-The-Fly Sensitivity” and how do I configure it?

On-The-Fly Sensitivity adjustment allows you to set a button of your choice on the Razer Basilisk Essential to enable the feature. If a button has been assigned to “On-The-Fly Sensitivity,” pressing and holding the assigned button down while moving the scroll wheel up or down will produce a bar on the lower right-hand corner of your screen allowing you to adjust your sensitivity settings by steps of 100 DPI.

Does the Razer Basilisk Essential feature onboard memory?

There is no on-board memory on the Basilisk Essential.

What is the Multi-Function Paddle on the Razer Basilisk Essential for?

Deliberately shaped as a Paddle rather than a traditional button, the easily accessible Multi-Function Paddle is designed not only to actuate and release quickly but also for enhanced comfort when held down; as opposed to traditional buttons which are intended for quick click-and-release. Push-to-talk, temporary DPI adjustment and other game actions that require the gamer to hold down the mouse button can now be executed in greater comfort. Like other programmable buttons, the Paddle can be customized in Razer Synapse 3.

Can I change the length of the Multi-Function Paddle on my Razer Basilisk Essential?

No, there is only one size available for the Basilisk Essential.

Is the Rubber Thumb Cap on the Razer Basilisk Essential removable?

Yes, the rubber thump cap on the Basilisk Essential is removable.

Will the DPI clutch on the Razer Basilisk fit on the Basilisk Essential?

Yes, the DPI Clutch for the Basilisk will also fit on the Basilisk Essential.

—

Software

Is Razer Basilisk Essential supported by Synapse 2 or Synapse 3?

The Razer Basilisk Essential is supported by Razer Synapse 3 Software.

How do I change the settings of my Razer Basilisk Essential?

To change the settings of your Razer Basilisk Essential— including changing keybinds, lighting, macros, and other functions, download and install [Razer Synapse 3](#).

To see more general faqs for peripherals, go to the [MICE FAQs](#).

—

Razer Basilisk Essential Firmware Updater | RZ01-02650

Applicable Models

- RZ01-02650

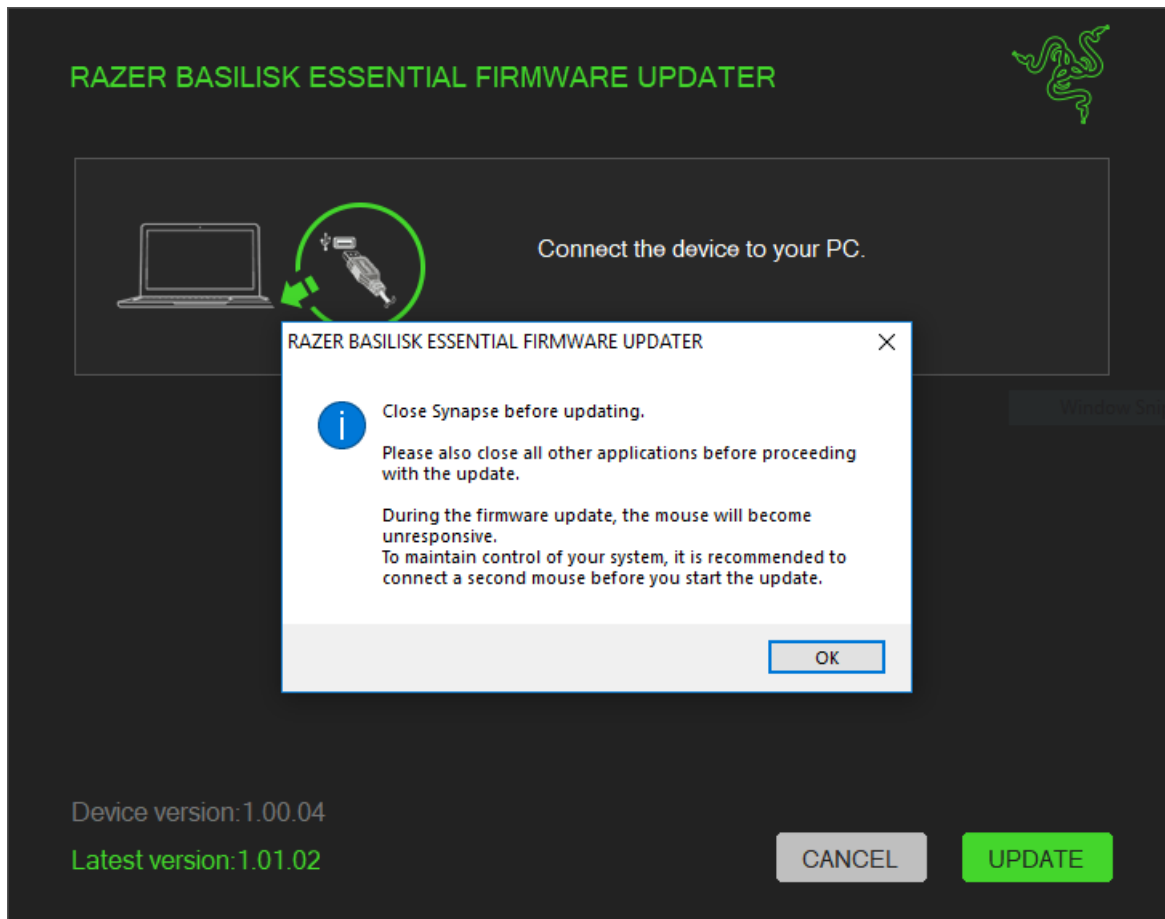
[Firmware v1.02.00](#)

- [Download](#) | June 11, 2019

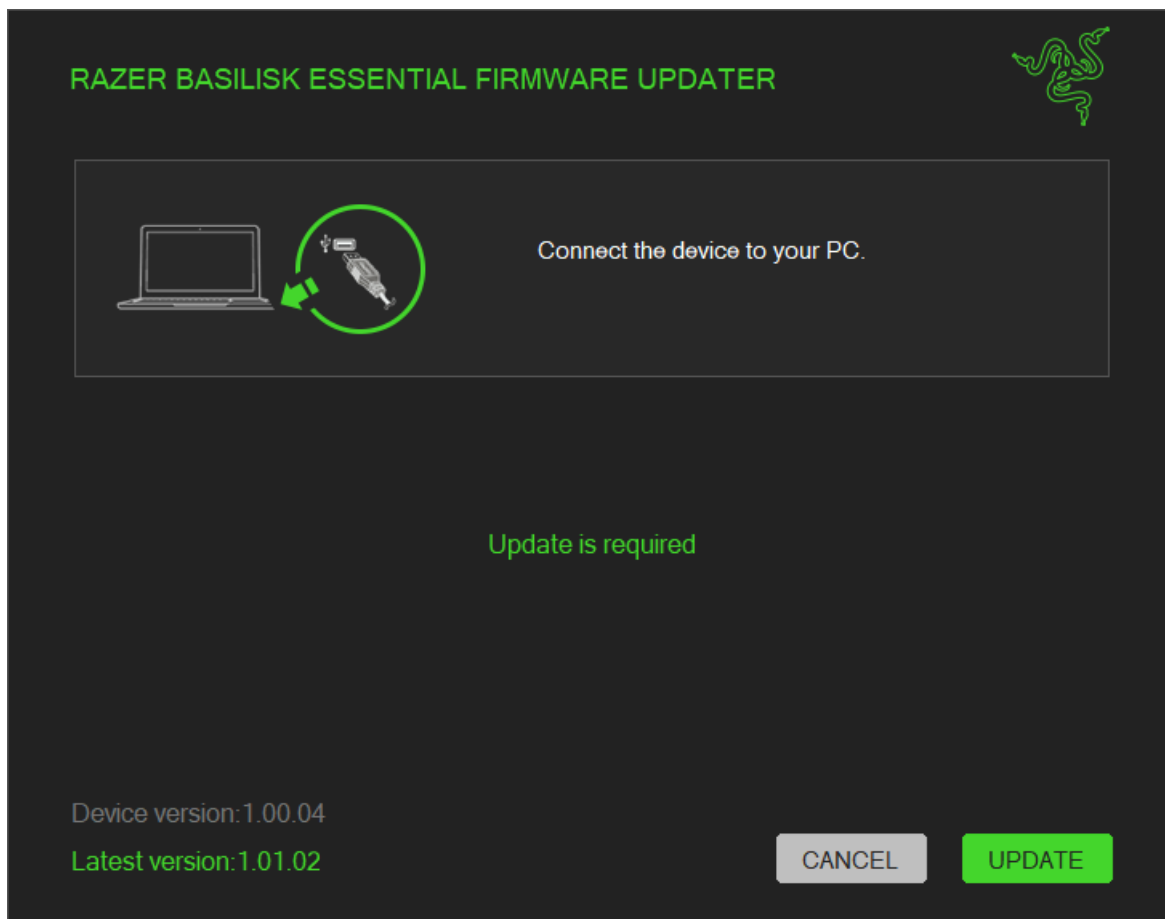
- Fixed an issue where the DPI Cycle button default function is not working after Signing out of Synapse.
- Fixed an issue where the Hypershift assignment does not get playback if the normal assignment is set to the same button.
- Fixed an issue where the Turbo function makes the keyboard function stuck.

Step-by-step Process

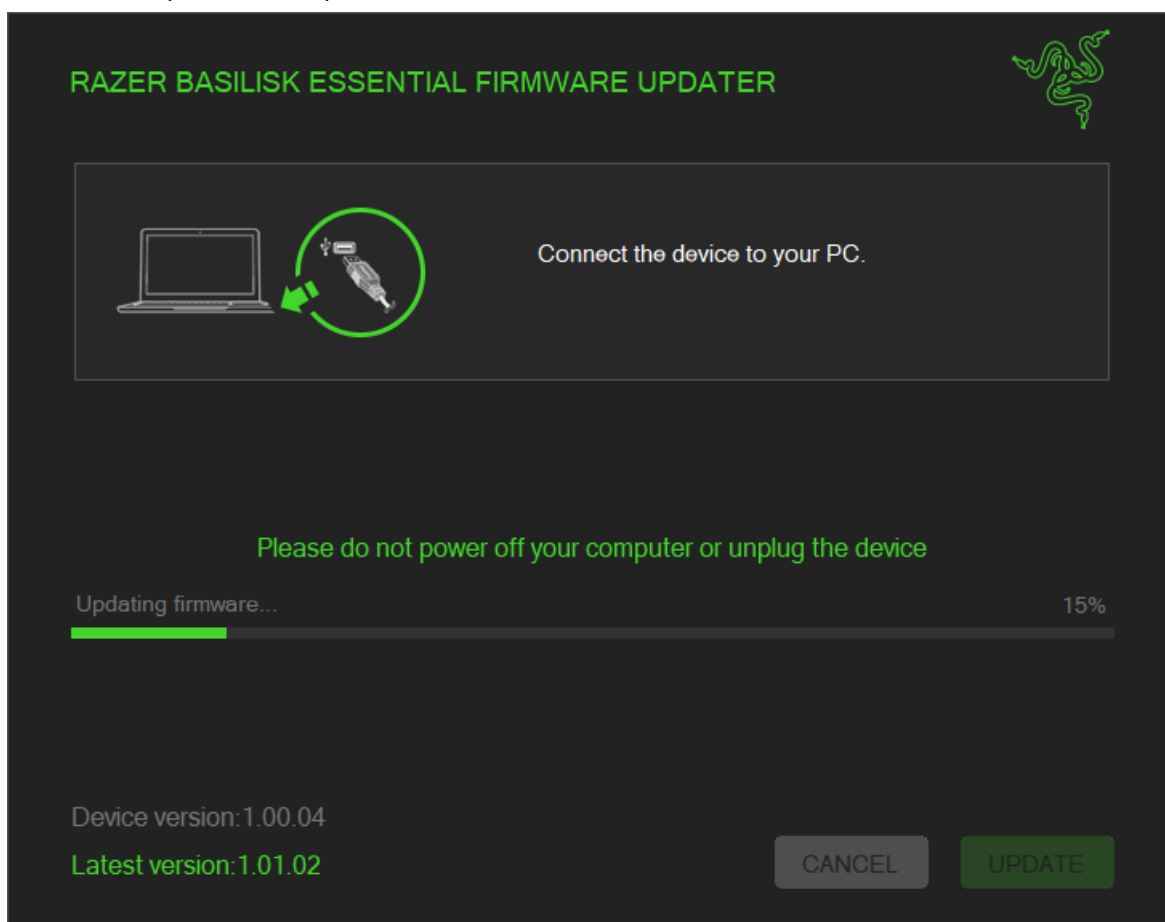
1. Download the latest firmware update by downloading the link found above.
2. Close Razer Synapse and all other running applications before proceeding with the update.
3. Run the downloaded firmware (The installer will prompt you to close Synapse and all other applications, if you have already done so, left click “OK” to proceed)



4. Connect the device and click “UPDATE”.



5. Wait for the update to complete.



6. Once the firmware has been successfully applied, left-click "Close" to exit the installer.

RAZER BASILISK ESSENTIAL FIRMWARE UPDATER



CONGRATULATIONS!

Your device has been updated to the latest firmware.

Device version: 1.01.02

CLOSE

Downloads

Razer Basilisk Essential Master Guide (Synapse 3) (Simplified Chinese) – [Download](#)

Razer Basilisk Essential Master Guide (Synapse 3) (Spanish) – [Download](#)

Razer Basilisk Essential Master Guide (Synapse 3) (German) – [Download](#)

Razer Basilisk Essential Master Guide (Synapse 3) (Arabic) – [Download](#)

Razer Basilisk Essential Master Guide (Synapse 3) (English) – [Download](#)

[Manuals+](#).