



RAZER Mouse Dock Pro Wireless Dock and Puck Combo User Guide

[Home](#) » [Razer](#) » RAZER Mouse Dock Pro Wireless Dock and Puck Combo User Guide 



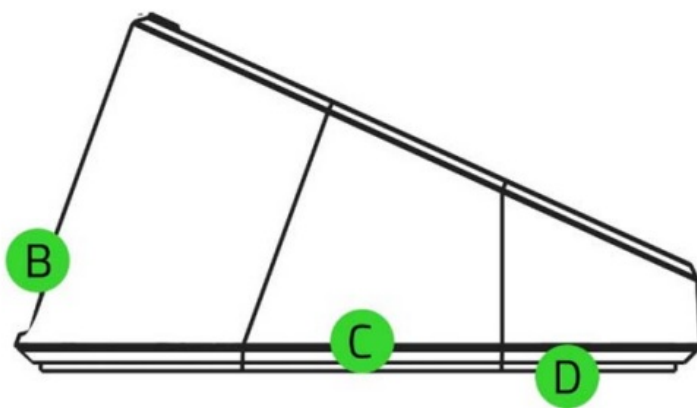
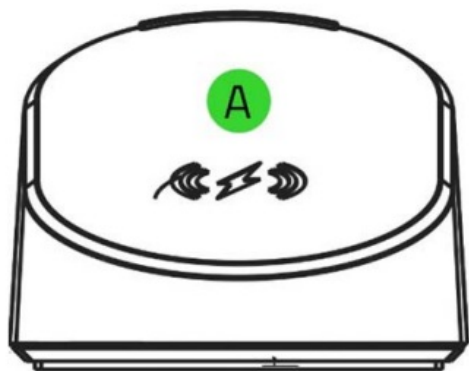
Mouse Dock Pro Wireless Dock and Puck Combo User Guide

Contents

- [1 WHAT'S INSIDE](#)
- [2 WHAT'S NEEDED](#)
- [3 LET'S GET YOU COVERED](#)
- [4 SAFETY AND MAINTENANCE](#)
- [5 MAINTENANCE AND USE](#)
- [6 LIMITED PRODUCT WARRANTY](#)
- [7 Documents / Resources](#)
 - [7.1 References](#)
- [8 Related Posts](#)

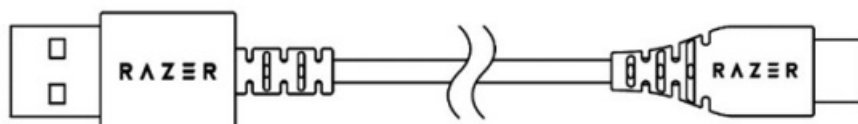
WHAT'S INSIDE

- Razer Mouse Dock Pro



- A. Magnetic wireless charging surface*
- B. USB-C port
- C. Underglow lighting Powered by Razer Chroma™ RGB
- D. Anti-slip base

USB-A to USB-C Speedflex cable

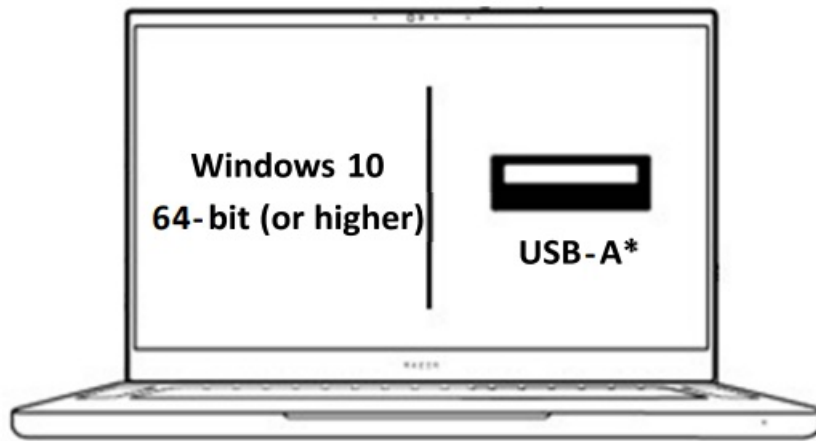


Razer Wireless Charging Puck



*For an updated list of compatible Razer wireless charging-enabled mice, visit support.razer.com

WHAT'S NEEDED

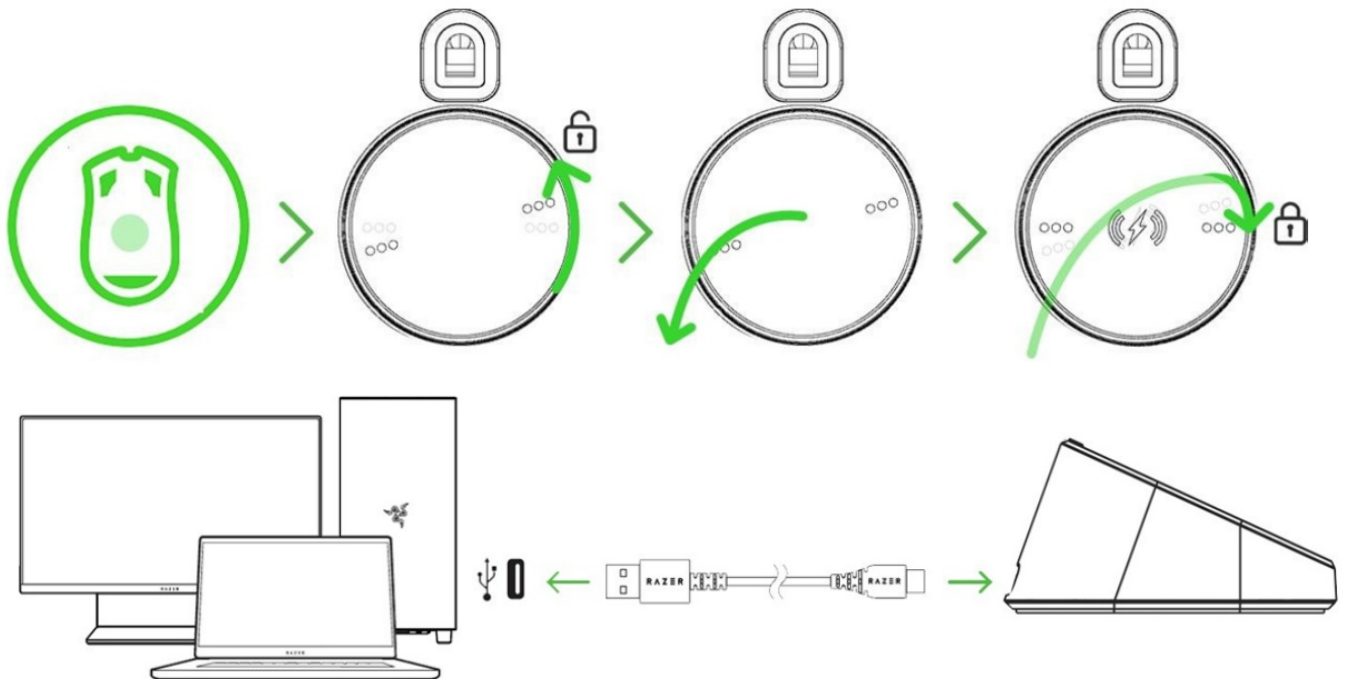


LET'S GET YOU COVERED

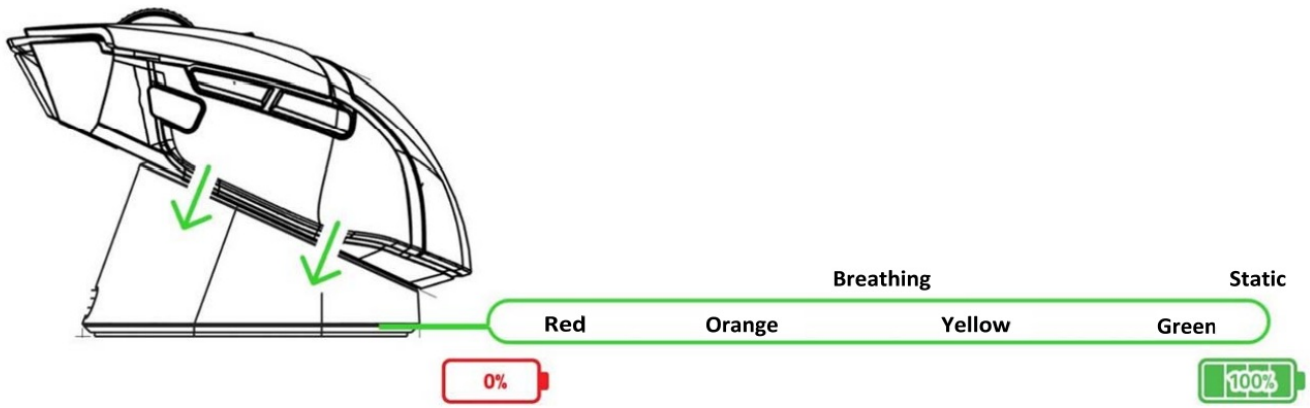


Register your product and score exclusive benefits razerid.razer.com/warranty

SETTING UP YOUR RAZER MOUSE DOCK PRO



Install Razer Synapse when prompted or download the installer from razer.com/synapse



Find out more about your highly-customizable mouse dock at support.razer.com

SAFETY AND MAINTENANCE

SAFETY GUIDELINES

To achieve maximum safety while using your Razer Mouse Dock Pro, we suggest that you adopt the following guidelines:

- Should you have trouble operating the device properly and troubleshooting does not work, unplug the device and contact the Razer hotline or go to support.razer.com for support.
- Don't take apart the device and don't attempt to operate it under abnormal current loads. Doing so will void your warranty.
- The Razer Mouse Dock Pro requires a USB connection that can supply sufficient power to charge a Razer wireless charging-compatible mouse. The charging process may be affected when connecting to a non-powered USB hub or non-powered USB mostly found on keyboards and peripherals.
- Don't use or place the device near water, moisture, or other wet surfaces.
- Don't use or place the device near any heat, naked flame, or other hot surfaces such as radiators, stoves, fireplaces, and candles.
- The device should only be used with compatible Razer wireless charging-enabled mice. Please check if your device is compatible with the mouse dock before charging. Razer shall not be responsible for any damages incurred to any device when using the mouse dock.
- The device should only be operated using the type of power source indicated on the device. If you're unsure of the power source, please consult the local power company or a qualified technician.
- Keep the device away from liquid, humidity, or moisture. Operate the device only within the specific temperature range of 0° C (32° F) to 40°C (104°F). Should the temperature exceed this range, unplug and/or switch off the device in order to let the temperature stabilize to an optimal level.

MAINTENANCE AND USE

The Razer Mouse Dock Pro requires minimum maintenance to keep it in optimum condition. Once a month, we recommend you clean the device using a soft cloth or cotton swab to prevent dirt buildup. Don't use soap or harsh cleaning agents.

LEGALESE

COPYRIGHT AND INTELLECTUAL PROPERTY INFORMATION ©2022 Razer Inc. All rights reserved. Razer, the triple – headed snake logo, Razer logo, “For Gamers. By Gamers.”, and “Razer Chroma” logo are trademarks or

registered trademarks of Razer Inc. or affiliated companies in the United States and other countries. All other trademarks are the property of their respective owners.

Windows and the Windows logo are trademarks of the Microsoft group of companies.

Razer Inc. ("Razer") may have copyright, trademarks, trade secrets, patents, patent applications, or other intellectual property rights (whether registered or unregistered) concerning the product in this guide. Furnishing of this guide does not give you a license to any such copyright, trademark, patent or other intellectual property right. The Razer Mouse Dock Chroma Pro (the "Product") differ from pictures whether on packaging or otherwise. Razer assumes no responsibility for such differences or for any errors that may appear. Information contained herein is subject to change without notice.

LIMITED PRODUCT WARRANTY

For the latest and current terms of the Limited Product Warranty, please visit [razer.com/warranty](https://www.razer.com/warranty).

LIMITATION OF LIABILITY

Razer shall in no event be liable for any lost profits, loss of information or data, special, incidental, indirect, punitive or consequential or incidental damages, arising in any way out of distribution of, sale of, resale of, use of, or inability to use the Product. In no event shall Razer's liability exceed the retail purchase price of the Product.

GENERAL

These terms shall be governed by and construed under the laws of the jurisdiction in which the Product was purchased. If any term herein is held to be invalid or unenforceable, then such term (in so far as it is invalid or unenforceable) shall be given no effect and deemed to be excluded without invalidating any of the remaining terms. Razer reserves the right to amend any term at any time without notice.

This equipment has been tested and found to comply with the limits for a Class B digital device, pursuant to part 15 of the FCC Rules. These limits are designed to provide reasonable protection against harmful interference in a residential installation. This equipment generates, uses and can radiate radio frequency energy and, if not installed and used in accordance with the instructions, may cause harmful interference to radio communications. However, there is no guarantee that interference will not occur in a particular installation. If this equipment does cause harmful interference to radio or television reception, which can be determined by turning the equipment off and on, the user is encouraged to try to correct the interference by one or more of the following measures:

- Reorient or relocate the receiving antenna.
- Increase the separation between the equipment and receiver.
- Connect the equipment into an outlet on a circuit different from that to which the receiver is connected.
- Consult the dealer or an experienced radio/TV technician for help.

FCC Radiation Exposure Statement

This device complies with FCC radiation exposure limits set forth for an uncontrolled environment and it also complies with Part 15 of the FCC RF Rules. This equipment must be installed and operated in accordance with provided instructions and the antenna(s) used for this transmitter must be installed to provide a separation distance of at least 15cm from all persons and must not be co-located or operating in conjunction with any other antenna or transmitter. End-users and installers must be provided with antenna installation instructions and consider removing the no-collocation statement.

This device complies with Part 15 of the FCC Rules. Operation is subject to the following two conditions: (1) this device may not cause harmful interference, and (2) this device must accept any interference received, including interference that may cause undesired operation.

Caution!

Any changes or modifications not expressly approved by the party responsible for compliance could void the user's authority to operate the equipment.

This device contains licence-exempt transmitter(s)/receiver(s) that comply with Innovation, Science and Economic Development Canada's licence-exempt RSS(s). Operation is subject to the following two conditions: (1) This device may not cause interference. (2) This device must accept any interference, including interference that may

cause undesired operation of the device.

This transmitter must not be co-located or operating in conjunction with any other antenna or transmitter. This equipment should be installed and operated with a minimum distance of 10 centimeters between the radiator and your body.


Declaration of Conformity

Hereby, Razer Inc. declares that the radio equipment type gaming mouse RC21-019901 is in compliance with Directive 2014/53/EU. The full text of the EU declaration of conformity is available at the following internet address: [razer.com/legal/compliance](https://www.razer.com/legal/compliance)

2.4Gequipment

- Operatingfrequencyrange:2402-2480MHz
- Maximumoutpower(E.I.R.P):11.93dBm(15.60 mW),2.4GSRD
- WPT:110kHz~205kHz

Documents / Resources

	RAZER Mouse Dock Pro Wireless Dock and Puck Combo [pdf] User Guide RC21019901, RWO-RC21019901, RWORC21019901, Mouse Dock Pro Wireless Dock and Puck Combo, Mouse Dock Pro, Wireless Dock and Puck Combo
------------------------------------------------------------------------------------	----------------------------------------------------------------------------------------------------------------------------------------------------------------------------------------------------------------------------

References

- [🌿 Compliance and Documents of Conformity](#)
- [🌿 Razer Synapse 3 - Cloud-Based Hardware Configuration Tool | Razer United States](#)
- [🌿 Razer Warranty Policy](#)
- [🌿 Official Razer Support](#)