



RAYSON SD-220B Comb Binding Machine Instruction Manual

[Home](#) » [RAYSON](#) » RAYSON SD-220B Comb Binding Machine Instruction Manual 

Rayson

COMB BINDING MACHINE
Instruction Manual



Contents

[1 Comb Binding Machine](#)

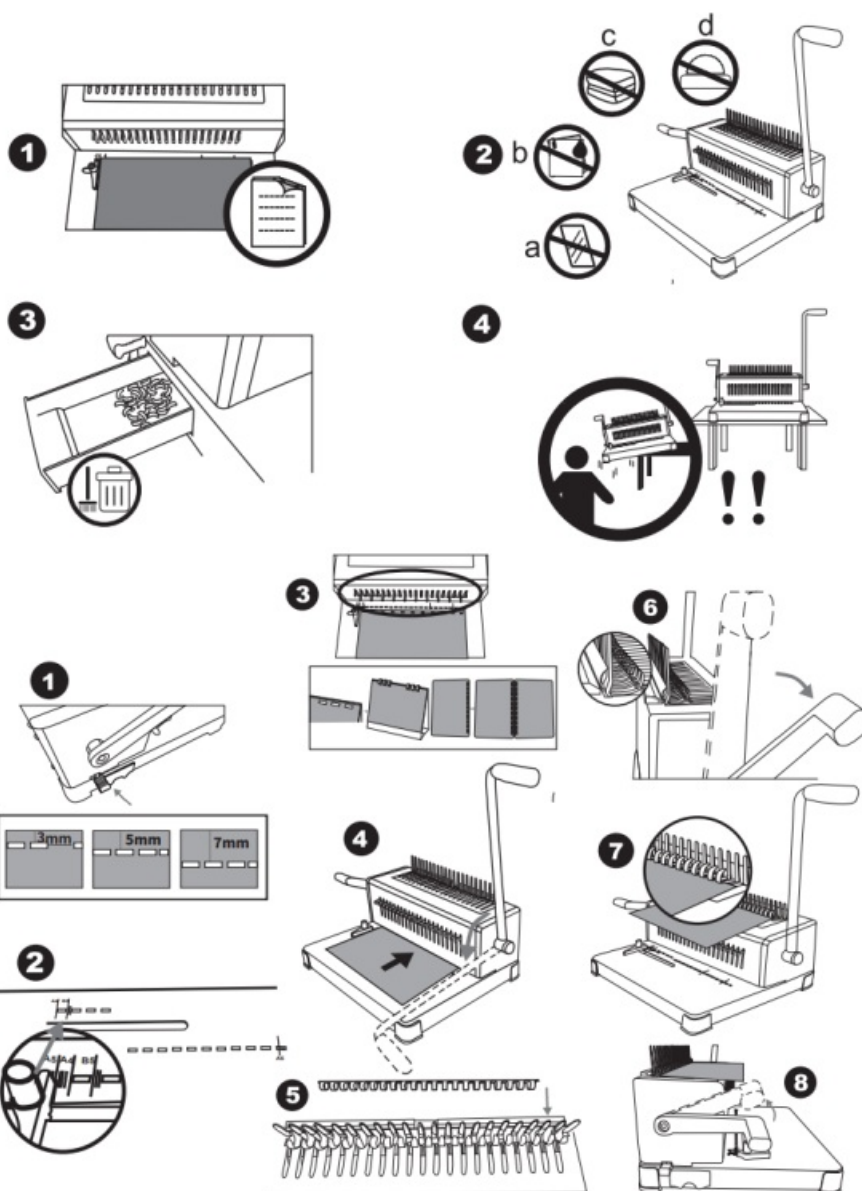
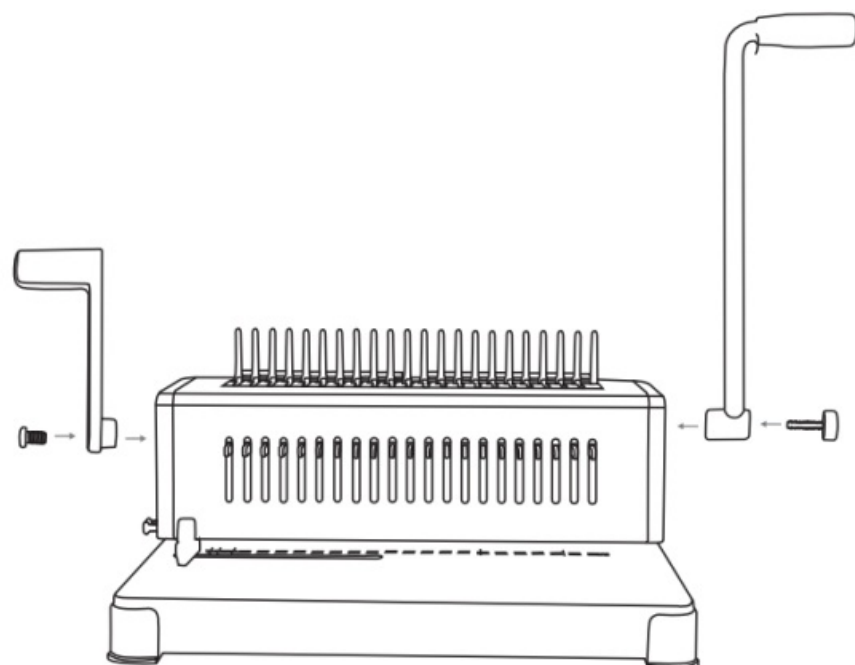
[2 Documents /
Resources](#)

[2.1 References](#)

[3 Related Posts](#)

Comb Binding Machine

*Metric(mm)	*Imperial(inch)	*Binding Capacity(sheets)
6	1/4	2-20
8	5/16	21-35
10	3/8	36-45
12	1/2	46-80
14	9/16	84-100
16	5/8	101-120
19	3/4	121-140
22	7/8	141-170
25	1	171-200
28 ,	1-1/8 ,	201-225
32	1-1/4	226-250
38 ,	1-1/2 ,	251-310
38	1-3/4	311-360
51	2 _	361-410



INSTRUCTION MANUAL

- 1: Specification of Comb Spines
- 2: Assemble

3: Attention

1. ≤22sheet 80g ✓
22sheet 80g ✕
2. a: Glass
b:Wet paper
c:Fabric
d:Metal
3. Clean up waste paper in time
4. The machine must put on a stable working surface.
Child is not allowed to operate.

IV: Operation Diagram

Please use oil removing paper (Enclosed) to punch first in order to clean up the blades.

1. Adjust the margin
2. Adjust the side guide
3. Choose how many holes to punch
4. Punching
5. Insert the comb ring
6. Open the comb ring
7. Loading documents
8. Binding



Documents / Resources

	<p>RAYSON SD-220B Comb Binding Machine [pdf] Instruction Manual SD-220B Comb Binding Machine, SD-220B, Comb Binding Machine, Binding Machine, Machine</p>
--	---

References

- [User Manual](#)