

RAYSON
SD-1201 Comb
Binding Machine



RAYSON SD-1201 Comb Binding Machine Instruction Manual

[Home](#) » [RAYSON](#) » RAYSON SD-1201 Comb Binding Machine Instruction Manual 

Contents

- [1 RAYSON SD-1201 Comb Binding Machine](#)
- [2 Specifications](#)
- [3 Assembling the Comb Binding Machine](#)
- [4 Operating the Comb Binding Machine](#)
- [5 Specification of Comb Spines](#)
- [6 OPERATION DIAGRAM](#)
- [7 Technical Data](#)
- [8 FAQs](#)
- [9 Documents / Resources](#)
 - [9.1 References](#)
- [10 Related Posts](#)

RAYSON

RAYSON SD-1201 Comb Binding Machine



Specifications

- Model: SD-1201
- Supported Paper Sizes: A4, B5
- Supported Comb Spine Sizes: 1/4, 5/16, 3/8, 1/2, 9/16, 5/8, 3/4, 7/8, 1, 1-1/8, 1-1/4, 1-1/2, 1-3/4, 2 inches
- Supported Sheet Capacity: Up to 12 sheets of 80g paper
- Supported Hole Sizes: 3mm, 4mm, 5mm, 6mm

Assembling the Comb Binding Machine

1. Ensure the machine is placed on a stable working surface.
2. Set the desired margin for punching.
3. Use the oil-removing paper provided to clean the blades before punching.
4. Insert the comb ring into the machine.

Operating the Comb Binding Machine

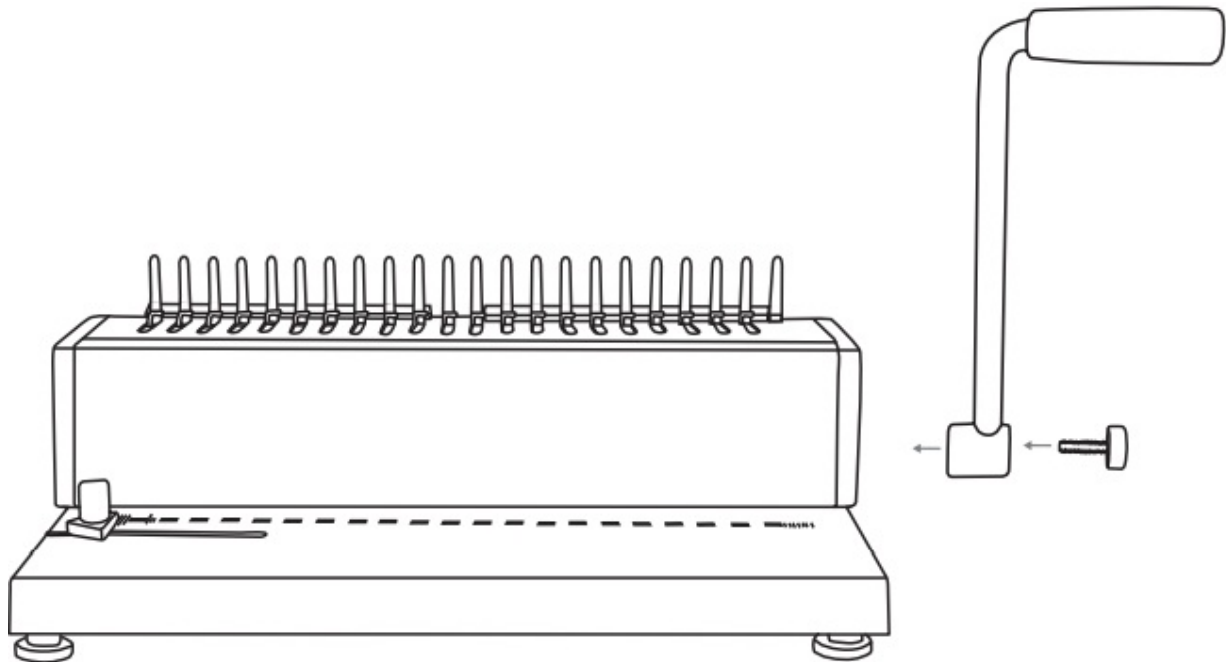
1. Punch holes in the documents according to the set margin.
2. Open the comb ring and place it in the machine.
3. Load the documents onto the comb ring.

4. Close the comb ring to secure the documents.

Specification of Comb Spines

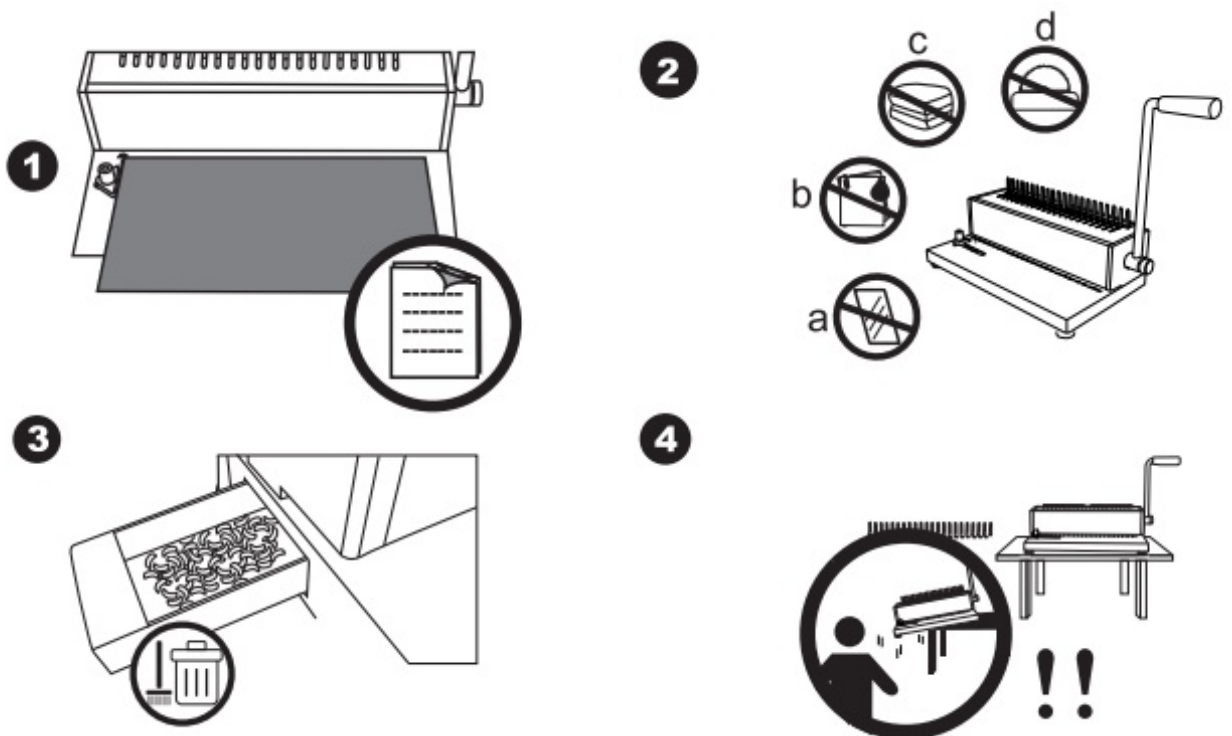
Assemble

- Attentio



1. ≤12sheet 80g ✓

- 12sheet 80g ✗



2. a: Glass

- b: Wet paper
- c: Fabric

- d: Metal

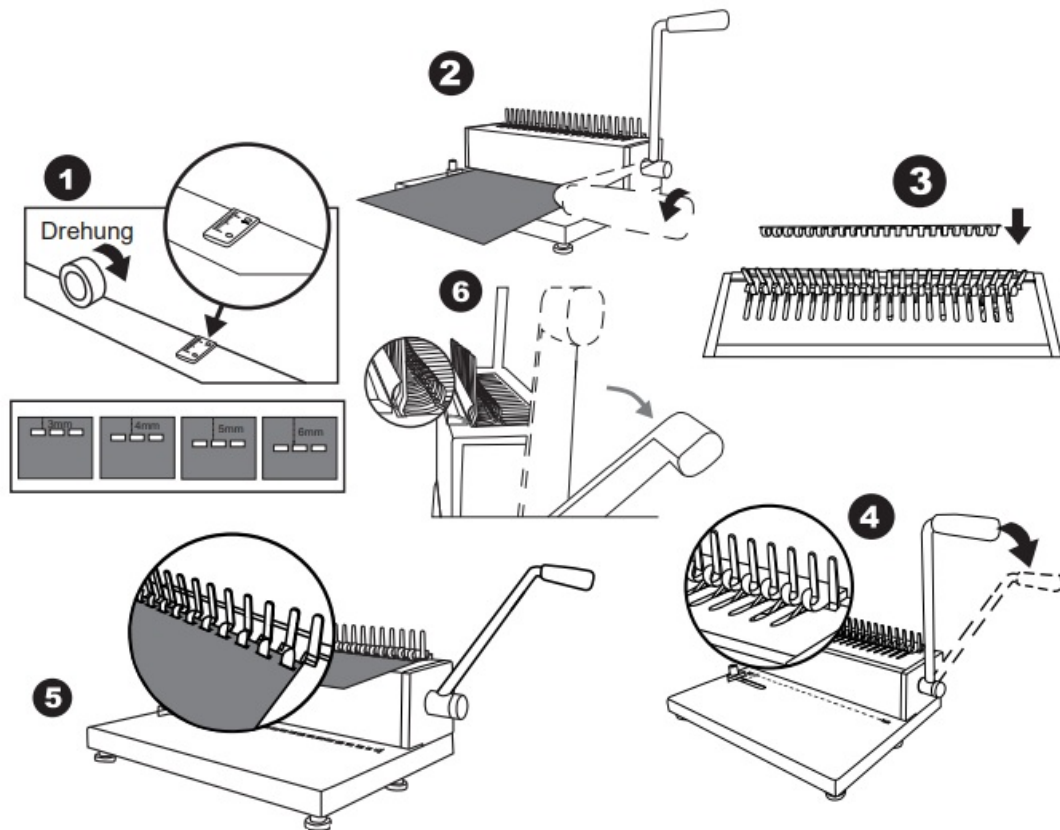
3. Clean up waste paper in time

4. The machine must put on a stable working surface. Child is not allowed to operate.

OPERATION DIAGRAM

Please use oil removing paper (Enclosed) to punch first in order to clean up the blades.

1. Adjust the margi



2. Punching

3. Insert the comb ring

4. Open the comb ring

5. Loading documents

6. Binding

Technical Data

*Metric(mm) *Métrico(mm) *Metrico(mm) *Métrique(mm) *Metrisch(mm)	*Imperial(inch) *Imperial(Pulgada) *Imperiale(Pollici) *Impérial(Pouce) *Kaiserliche(Zoll)	*Binding Capacity(sheets) (20 lb / 80 g) *Capacidad de encuadernación(Hojas) *Capacità di rilegatura(Foglia) *Capacité de Reliure(Feuilles) *Bindekapazität(Blatt)
6	1/4	2~20
8	5/16	21~35
10	3/8	36~45
12	1/2	46~80
14	9/16	84~100
16	5/8	101~120
19	3/4	121~140
22	7/8	141~170
25	1	171~200
28	1-1/8	201~225
32	1-1/4	226~250
38	1-1/2	251~310
45	1-3/4	311~360
51	2	361~410

FAQs

Q: Can this machine handle thicker paper?

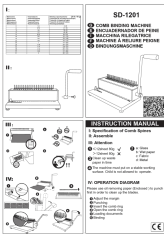
A: The machine is designed to handle up to 12 sheets of 80g paper. Thicker paper may affect the punching and binding process.

Q: Is it safe for children to use this machine?

A: No, children should not operate this machine. It should be used by adults or under adult supervision only.



Documents / Resources

	<p>RAYSON SD-1201 Comb Binding Machine [pdf] Instruction Manual SD-1201 Comb Binding Machine, SD-1201, Comb Binding Machine, Binding Machine, Machine</p>
---	---

References

- [User Manual](#)

Manuals+ **Privacy Policy**

This website is an independent publication and is neither affiliated with nor endorsed by any of the trademark owners. The "Bluetooth®" word mark and logos are registered trademarks owned by Bluetooth SIG, Inc. The "Wi-Fi®" word mark and logos are registered trademarks owned by the Wi-Fi Alliance. Any use of these marks on this website does not imply any affiliation with or endorsement.