



Rayrun T130 RGB LED Controller User Manual

[Home](#) » [RayRun](#) » Rayrun T130 RGB LED Controller User Manual 

Contents

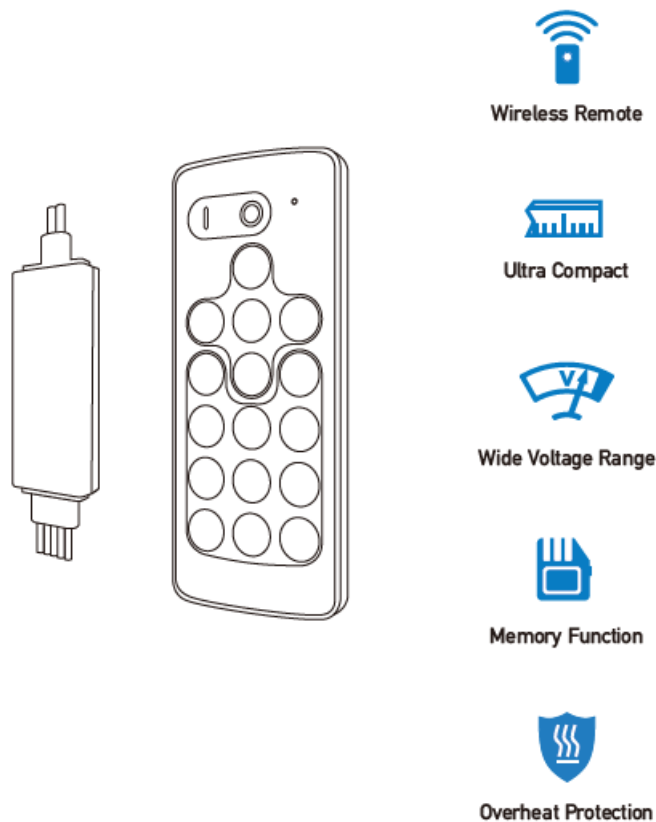
- [1 Rayrun T130 RGB LED Controller](#)
- [2 overview](#)
- [3 Wiring diagram](#)
- [4 Introduction](#)
- [5 Receiver & wiring](#)
- [6 Remote controller function](#)
- [7 Remote controller operation](#)
- [8 Overheat Protection](#)
- [9 Specification](#)
- [10 Documents / Resources](#)
- [11 Related Posts](#)



Rayrun T130 RGB LED Controller

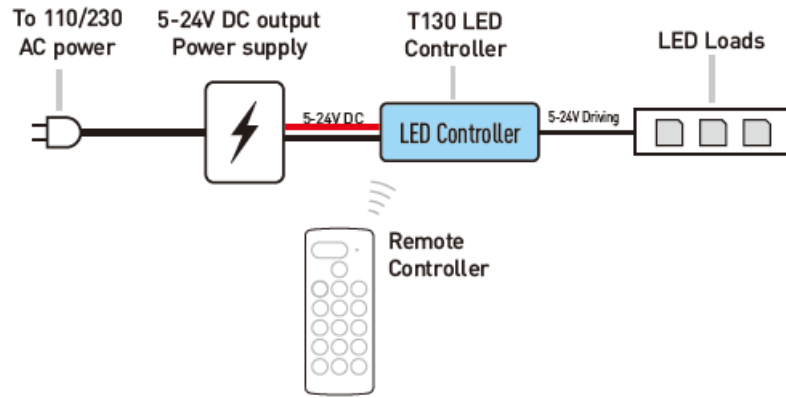


overview



Wiring diagram

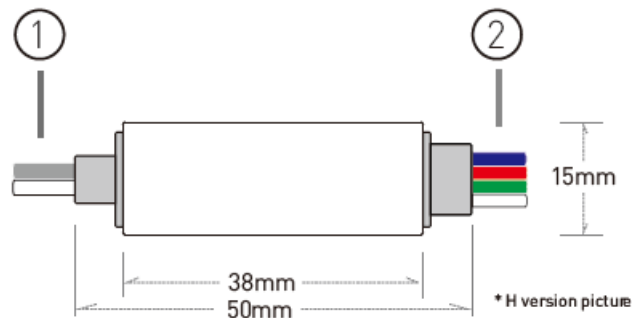
Please connect the controller output to LED loads and power supply to the controller power input. The output voltage of power supply must be same as the LED load's rated voltage. Check all cables to be well connected and insulated before power on.



Introduction

T130 RGB LED controller is designed to drive constant voltage LED products with common anode connection in voltage range of DC5-24V. The receiver works with the remote controller, user can setup RGB LED color, brightness and dynamic modes via the remote controller.

Receiver & wiring



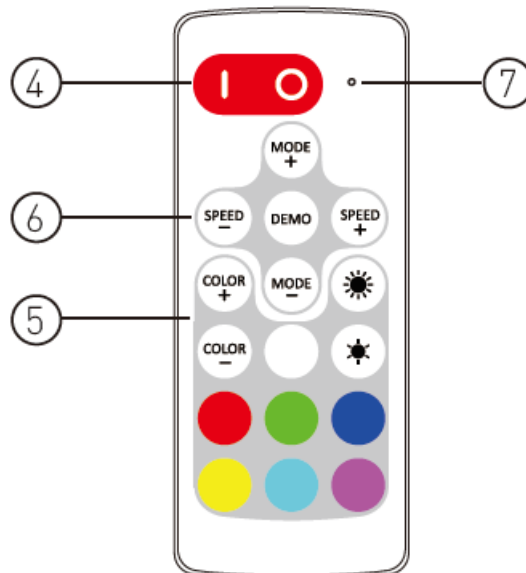
Power supply input

The controller supply voltage range is from DC 5V to 24V. Please refer to the print on the controller for cable polarity. The output voltage is at the same level as the power voltage, please make sure the power supply voltage is correct and the power wattage is capable for the load wattage. Please be noted the positive power cable is directly connected to the output cable inside the controller.

LED output

Connect to LED loads. Please refer to the print on the controller for cable polarity and connect LED load with

Remote controller function





Turn ON / OFF

Press 'I' key to turn on controller or press 'O' key to turn off. The controller will memorize the on/off status and will restore to the previous status on the next power on. Please use remote controller to turn on the unit if it was switched to off status before power cut.

Static RGB color setting

The keys in this area set the RGB static color and brightness. Press the colored keys to set the LEDs to correspond color as shortcut, press 'COLOR+' and 'COLOR-' key to select all colors from the preset library, press

 and  key to adjust color brightness.

Dynamic effect setting

Press 'MODE+' and 'MODE-' to select dynamic effect and press 'SPEED+' and 'SPEED-' key to set the running speed of the dynamic effect.

Press 'DEMO' key to play the dynamic effects in loop with each mode repeating for 3 times.

Remote indicator

This indicator blinks when remote controller is working. If the indicator flashes slowly when pressing keys, it means the remote battery is used up and please change the battery in this case. The battery type is CR2032.

Remote controller operation

Using the remote controller

Please pull out the battery insulate tape before using.



The RF wireless remote signal can pass through some nonmetal barrier. For proper receiving remote signal, please do not install the controller in closed metal parts.

Pair a new remote controller

The remote controller and receiver is 1 to 1 paired as

factory default. It's possible to pair maximum 5 remote controllers to one receiver and each remote controller could be paired to any receivers.

To pair a new remote controller, please follow two steps:

1. Plug off the power of receiver and plug in again after more than 5 seconds.
2. Press  and  key simultaneously for about 3 seconds, within 10 seconds after the receiver powered on.
3. After this operation, the LED fixture will flash quickly to acknowledge that remote pairing is accomplished.

Keep one remote and forget others

In some cases, one receiver might be paired with several remote controllers but extra remote controllers are no longer needed except current using one. User can simply pair the current using remote to receiver again, then the receiver will dis-pair all other remote controllers and recognize current one only.

Overheat Protection

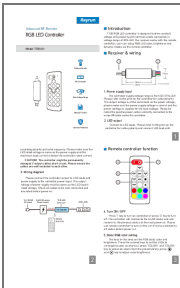
The controller has overheat protection feature and it can protect itself from damage caused by some abnormal usage such as overloading which generates excess heat. At overheat situation, the controller will shutdown the output for a short while and recover when temperature drops to a safe range.

Please check the output current and make sure it's under rated level at this situation.

Specification

- Output mode PWM constant voltage
- Working voltage DC 5-24V
- Rated output current 3x2A
- Brightness grade 5 levels
- Static color 30 colors
- Dynamic effects 43 effects
- Dynamic speed 10 levels
- PWM frequency 1KHz
- PWM physical grade 256 steps
- Overheat protection Yes
- Remote frequency 433.92MHz
- Remote control distance >15m at open area
- Power off memorizing Yes, restore to previous mode before off.
- Housing Tubed for standard, ABS+Slicon for -H version
- Controller dimension 50x15x7mm

Documents / Resources



Rayrun T130 RGB LED Controller [pdf] User Manual
T130 RGB LED Controller, T130, RGB LED Controller, LED Controller, Controller