



# Rayrun RM16 RF Wireless LED Remote Controller User Manual

[Home](#) » [RayRun](#) » Rayrun RM16 RF Wireless LED Remote Controller User Manual 

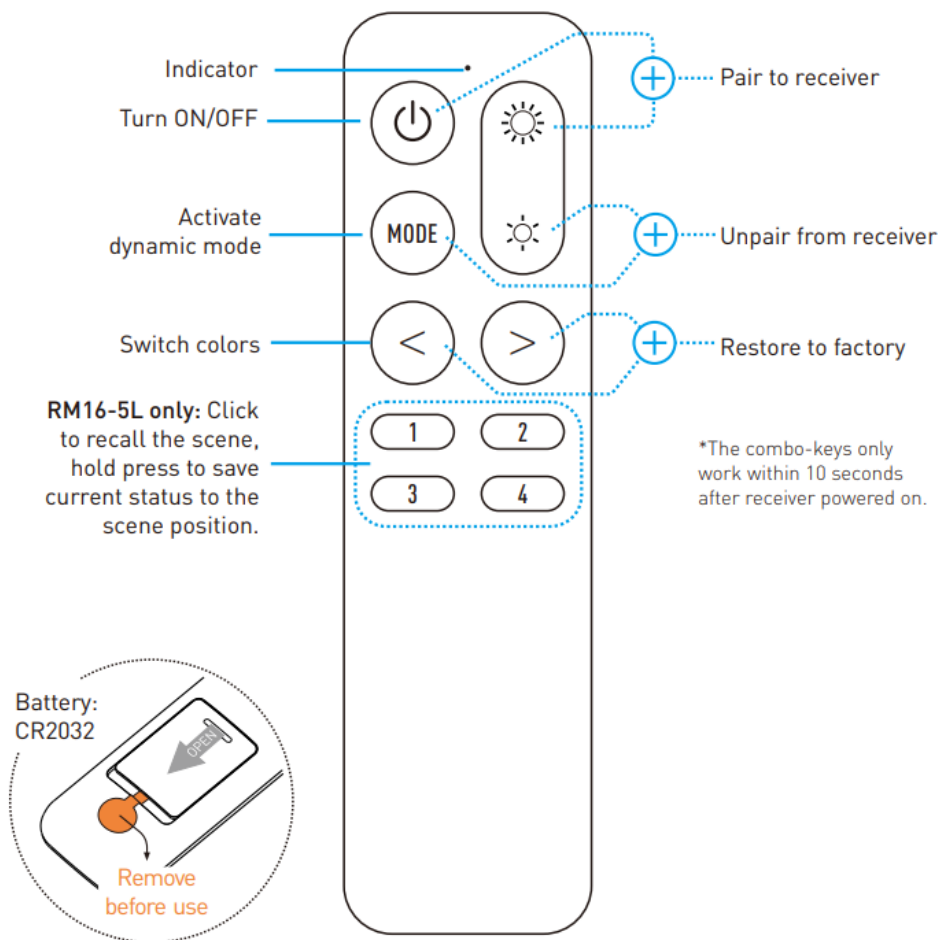


RF Wireless  
LED Remote Controller  
Model: RM16

## Contents

- [1 Function](#)
- [2 Operation](#)
- [3 Specification](#)
- [4 FCC Caution:](#)
- [5 Documents / Resources](#)

## Function




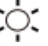


## Operation

### 1. Pair and unpair the remote to receiver

The remote controller needs to be paired to receiver to work. User can pair up to 5 remote controllers to one receiver and each remote controller can be paired to any receiver.

To pair or unpair remote to the receiver, please operate with following steps:

- 1). Cut off the power of receiver and power on again after more than 5 seconds.
- 2). Press remote  and  key simultaneously and briefly within 10 seconds after receiver powered on.
- 3). To unpair the remote from receiver, do the step 1 first, then press remote  and  key simultaneously and briefly within 10 seconds after receiver powered on.



### 2. Load and save scenes

User can load or save scenes with 1-4 digit keys. Short press on 1-4 key can load the saved scene.

To save a scene, please adjust the favorite light status first, then hold press 1-4 digit key to save current status to relative scene position. After save operation, user can load the saved scene by short press the digit key.

### 3. Restore the controller to factory default

To restore the paired controller or receiver to factory default mode, please operate with following two steps:

- 1). Cut off the power of paired controller/receiver and power on again after more than 5 seconds.
- 2). Press remote  and  key simultaneously and briefly within 10 seconds after the paired controller/receiver powered on.

After this operation, the paired controller/receiver will be restored to factory settings, and the remote controller will also be unpaired from the controller/receiver.

## Specification

Working voltage	DC 3V, CR2032 battery
Frequency band	433MHz ISM band
Wireless power	< 7dBm
Working temperature	-20-55 C(-4-131 F)

## FCC Caution:

### Part 15.21

Any Changes or modifications not expressly approved by the party responsible for compliance could void the user's authority to operate the equipment.

### Part 15.19

This device complies with part 15 of the FCC Rules.

Operation is subject to the following two conditions: (1) This device may not cause harmful interference, and (2) this device must accept any interference received, including interference that may cause undesired operation.

### FCC RF Radiation Exposure Statement:

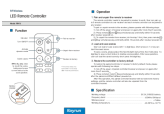
1. This Transmitter must not be co-located or operating in conjunction with any other antenna or transmitter.
2. This equipment complies with RF radiation exposure limits set forth for an uncontrolled environment.
3. The device has been evaluated to meet general RF exposure requirement. The device can be used in portable exposure condition without restriction.

### Part 15.105

**Note:** This equipment has been tested and found to comply with the limits for a Class B digital device, pursuant to part 15 of the FCC Rules. These limits are designed to provide reasonable protection against harmful interference in a residential installation. This equipment generates, uses and can radiate radio frequency energy and, if not installed and used in accordance with the instructions, may cause harmful interference to radio communications. However, there is no guarantee that interference will not occur in a particular installation. If this equipment does cause harmful interference to radio or television reception, which can be determined by turning the equipment off and on, the user is encouraged to try to correct the interference by one or more of the following measures:

- Reorient or relocate the receiving antenna.
- Increase the separation between the equipment and receiver.
- Connect the equipment into an outlet on a circuit different from that to which the receiver is connected.
- Consult the dealer or an experienced radio/TV technician for help.

## Documents / Resources

	<a href="#">Rayrun RM16 RF Wireless LED Remote Controller</a> [pdf] User Manual 2ACJPRM16, RM16-5L, RM16, RF Wireless LED Remote Controller, RM16 RF Wireless LED Remote Controller, Wireless LED Remote Controller, LED Remote Controller, Remote Controller, Controller
---	--