



RayRun RM05 Umi Smart Wireless Remote Controller User Manual

[Home](#) » [RayRun](#) » RayRun RM05 Umi Smart Wireless Remote Controller User Manual 

Contents

- [1 Umi Smart Wireless](#)
- [2 Remote Controller](#)
- [3 General Purpose Dimming & Color Control](#)
- [4 Function](#)
- [5 Operation](#)
 - [5.1 1. Pair the remote to receiver](#)
 - [5.2 2. Unpair the remote controller](#)
 - [5.3 3. Adjust color](#)
 - [5.4 4. Change RGB/White mixing mode](#)
- [6 Specification](#)
 - [6.1 FCC Caution:](#)
- [7 Documents / Resources](#)
- [8 Related Posts](#)

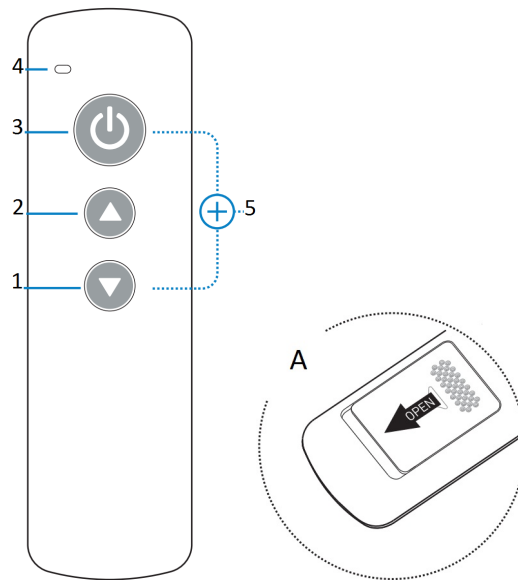
Umi Smart Wireless

Remote Controller

Model: RM05

General Purpose Dimming & Color Control

Function



1. Dim down / Change color
2. Dim up / Change color
3. Turn ON/OFF lights, Double -click to activate color changing. Tripe click to switch color mixing.
4. Indicator
5. **Pair to receiver**
 *Hold press in 10 seconds once receiver powered on.

A Battery: CR2032





Operation

1. Pair the remote to receiver

The remote controller needs to be paired to receiver to work. User can pair up to 5 remote controllers to one receiver and each single remote controller can be paired to any receiver.

To pair a new remote to the receiver, please operate with following two steps:


- 1). Cut off the power of receiver and power on again after more than 5 seconds.
- 2). Hold press remote  and  key simultaneously and briefly within 10 seconds after receiver powered on. After this operation, the remote is paired to the receiver and ready to work.



2. Unpair the remote controller

To unpair the remote from the receiver, please operate with following two steps:

- 1). Cut off the power of receiver and power on again after more than 5 seconds.
- 2). Hold press all 3 keys simultaneously within 10 seconds after receiver powered on. After this operation, the remote will be unpaired from receiver.


3. Adjust color

For working with multi-color receivers, user can double click the  key to activate the color adjusting mode.

After double click, the  and  and key will swap to color adjusting function shortly. The indicator will flash at the color adjusting mode. The up and down key will swap back to dimming function after no operation for a while.

4. Change RGB/White mixing mode

For RGB+White and RGB+CCT application, user can switch the color mixing mode between white(CCT), RGB and White(CCT)+RGB mode.

To click the  key for 3 times rapidly, the color mixing mode on receiver will change.

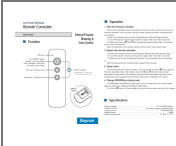
Specification

Working voltage DC 3V, CR2032 battery
Wireless protocol Umi protocol based on SIG BLE Mesh
Frequency band 2.4GHz ISM band
Wireless power < 7dBm
Working temperature -20-55 °C(-4-131 °F)

FCC Caution:

Any Changes or modifications not expressly approved by the party responsible for compliance could void the user’s authority to operate the equipment.
This device complies with part 15 of the FCC Rules. Operation is subject to the following two conditions: (1) This device may not cause harmful interference, and (2) this device must accept any interference received, including interference that may cause undesired operation.
FCC RF Radiation Exposure Statement:
1. This Transmitter must not be co-located or operating in conjunction with any other antenna or transmitter.
2. This equipment complies with RF radiation exposure limits set forth for an uncontrolled environment.
The device has been evaluated to meet general RF exposure requirement. The device can be used in portable exposure condition without restriction.

Documents / Resources



[RayRun RM05 Umi Smart Wireless Remote Controller](#) [pdf] User Manual
RM05, 2ACJPRM05, RM05 Umi Smart Wireless Remote Controller, RM05, Umi Smart Wireless Remote Controller