

# Rayrun PS01 Presence Sensor and Remote Controller User Manual

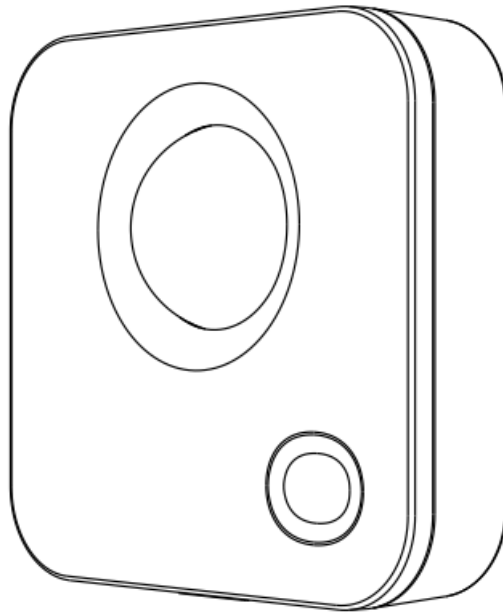
[Home](#) » [RayRun](#) » Rayrun PS01 Presence Sensor and Remote Controller User Manual 

## Contents

- [1 Rayrun PS01 Presence Sensor and Remote Controller](#)
- [2 Function](#)
- [3 Installation](#)
- [4 Operation](#)
- [5 Specification](#)
- [6 Documents / Resources](#)
- [7 Related Posts](#)

**Rayrun**

**Rayrun PS01 Presence Sensor and Remote Controller**



## Function

PS01 is a passive presence sensor with integrated touch key. It needs to be used with Umi compatible LED controller or driver to turn on lights while presence detection, user also can use it as a remote controller with on/off, dimming and color tuning function by the touch key. There's advanced feature with turn off timer, turn on brightness, detection sensitivity and luminance trigger level can be adjusted from the Umi Smart app. With the long battery life option (-L) and ultra-low standby power, it can work more than 5 years with free of battery replacement.

## Installation

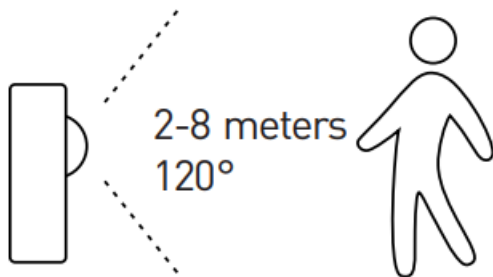


Fig.1 Detection range

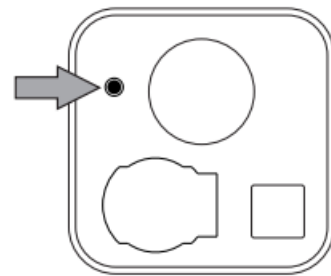


Fig.2 Pairing key

### Detection range

The sensor can detect human moving in a cone shape within 2 to 8 meters distance and 120-degree width (Fig.1). The detection sensitivity is adjustable with 3 levels from Umi Smart app, please refer to the app setting description in this manual.

### Pair and unpair to receiver

The sensor needs to be paired to LED controller or driver before proper working. To pair the sensor, please operate with following steps:

1. Open the sensor cover and find the pairing key. (Fig.2)

2. Cut off the power of the receiver to be paired, and power on the receiver again after more than 10 seconds.
3. Within 10 seconds after receiver powered on, short press the sensor's pairing key to pair to the receiver, or hold press the pairing key to unpair from the receiver.

### **Built-in ultra long life battery (-L model)**

Besides the main CR2032 cell battery socket, the PS01-L ultra long battery life model has a factory built-in battery. PS01-L can work for more than 5 years without the main battery. After the built-in battery runs out, user still can install the main CR2032 battery for normal operation and get average battery life time up to 2 years.

## **Operation**

### **Touch key operation**

The touch key is located in the groove of sensor surface, touch key will be activated when human detection is triggered. User can operate the touch key by short touch, hold touch, double click touch or triple click touch. The different touch operation will result as following:

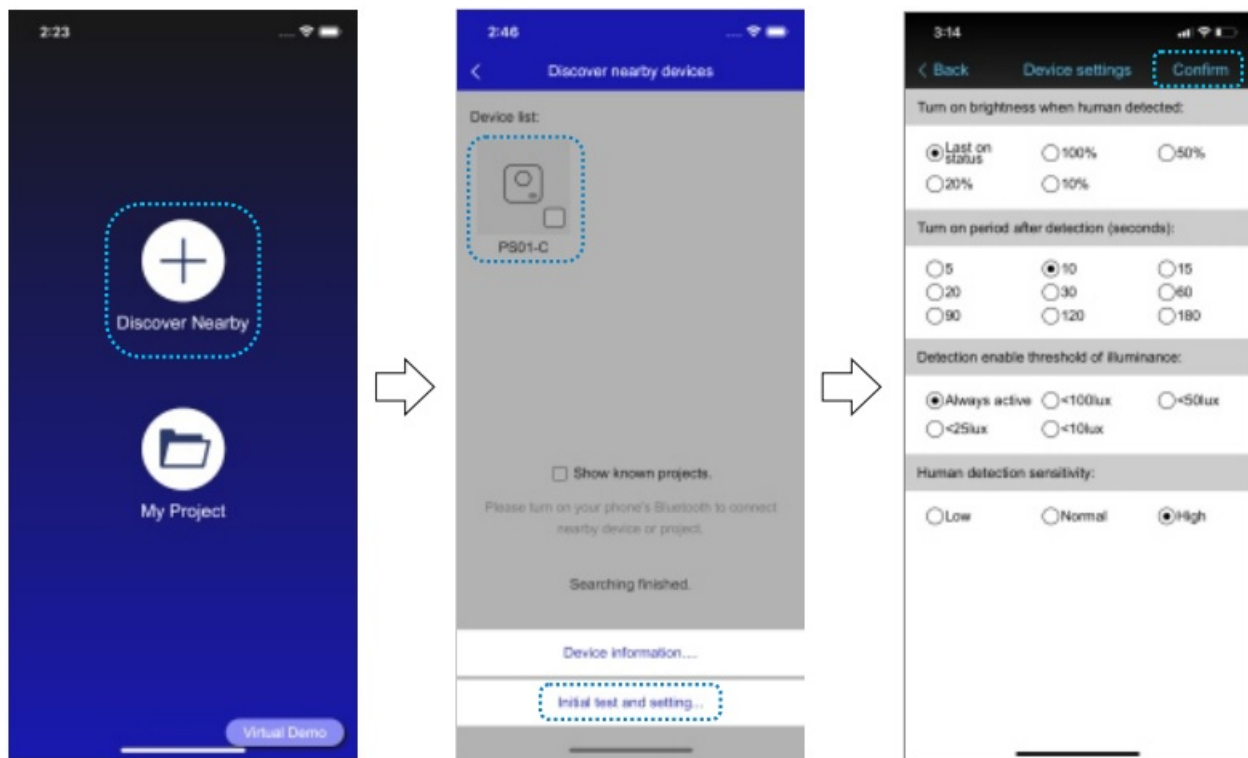
1. Turn on/off: Short touch to toggle on/off the light.
2. Dimming: Hold touch to dim up/down. The dimming direction will reverse on each hold touch operation.
3. Activate color tuning (not available for single color receivers): Double click to activate color tuning mode. In color tuning mode, the indicator will flash and user can adjust color by hold press the key. The color tuning mode will be inactivated after 5 seconds without operation.
4. Change color mixing (for RGB+W and RGB+CCT receivers only): Triple click to change the color mixing mode between RGB only, white only and RGB+White.

### **Advanced setting from app**

The turn off timer, turn on brightness, detection sensitivity and luminance trigger level can be adjusted from the Umi Smart smartphone app.

To setup the these features from app, please operate with following steps:

1. Download the 'Umi Smart' app by scanning the QR code.
2. Open the app and press the sensor's pairing key to activate app detection.
3. Tap the 'Discover nearby' button on the app, and find the sensor.
4. Tap on the sensor icon and select 'Initial test and setting' from popup menu.
5. Setup the listed features from dialogue box.
6. Tap 'Confirm' to save the sensor setting.



### Inactive mode

The sensor can be set to inactive mode by double-clicking the key under the top cover (Fig.2). The sensor will be deactivated for all function until pressing this key again. The battery life will also extend at inactive mode.

### Specification

- **Main battery:** CR2032 cell battery
- **Built-in battery:** 600mAh cell battery, -L model only
- **Wireless protocol:** Umi protocol based on SIG BLE Mesh
- **Frequency band:** 2.4GHz ISM band
- **Wireless power:** <7dBm
- **Working temperature:** -20-55 °C(-4-131 °F )

App download link:



### Documents / Resources

	<p><a href="#">Rayrun PS01 Presence Sensor and Remote Controller</a> [pdf] User Manual</p> <p>PS01, Presence Sensor and Remote Controller, PS01 Presence Sensor and Remote Controller, Sensor and Remote Controller, Remote Controller, Controller, PS01 Umi Smart Wireless Presence Sensor and Remote Controller</p>
--	-----------------------------------------------------------------------------------------------------------------------------------------------------------------------------------------------------------------------------------------------------------------------------------------------------------------------

