



Rayrun BW01-C Wall Panel Rotary Remote Controller User Manual

[Home](#) » [RayRun](#) » Rayrun BW01-C Wall Panel Rotary Remote Controller User Manual 

Contents

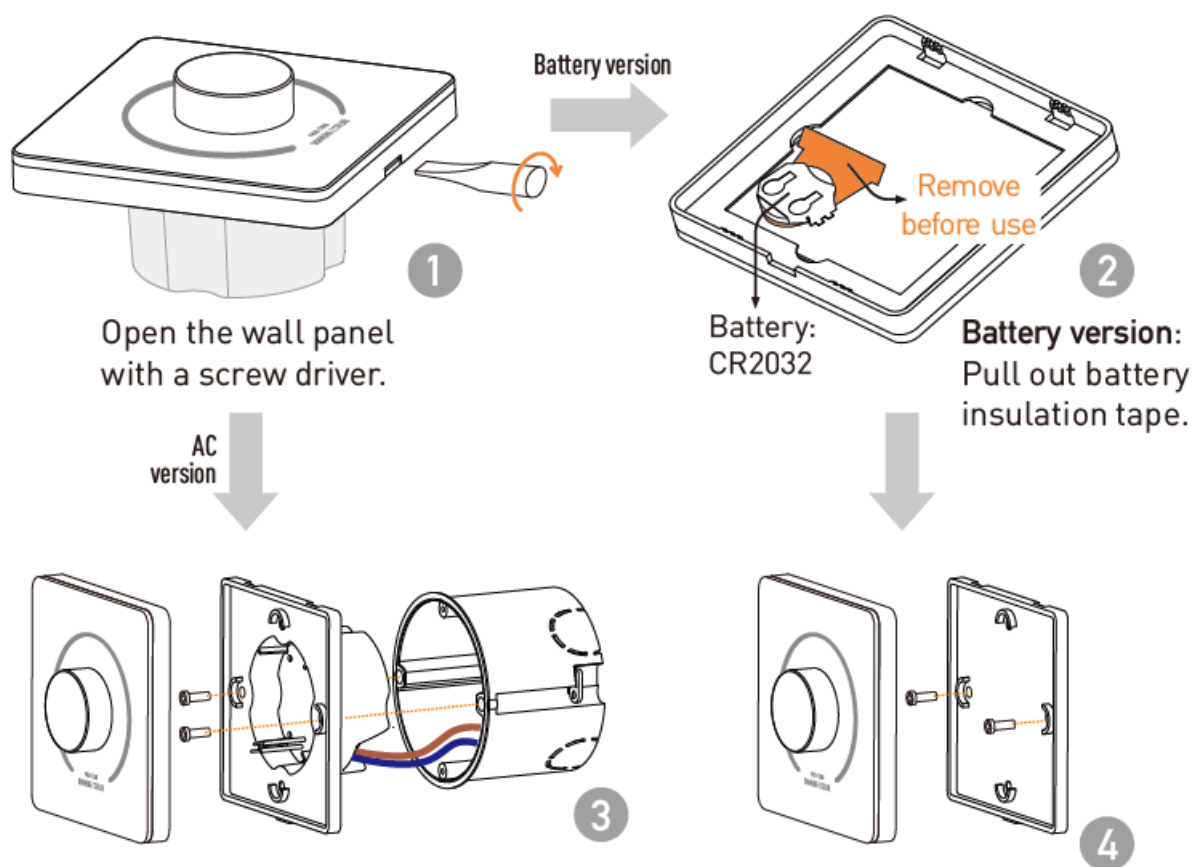
- [1 Rayrun BW01-C Wall Panel Rotary Remote Controller](#)
- [2 Quick installation guide](#)
- [3 Introduction](#)
- [4 AC version installation](#)
- [5 Battery version installation](#)
- [6 Operation](#)
- [7 Specification](#)
- [8 Documents / Resources](#)
- [9 Related Posts](#)

The Rayrun logo, featuring the word "Rayrun" in a white, sans-serif font, centered within a solid blue rectangular background.

Rayrun BW01-C Wall Panel Rotary Remote Controller



Quick installation guide



- **AC version:** Connect AC power and install the bottom part to a socket with a screw, then clip the panel part to the bottom part.
- **Battery version:** Install the back cover to the wall with a screw or adhesive, then clip the panel part to the back cover.

Introduction

This wall panel is designed to control compatible Single color, CCT, RGB, RGB+White, or RGB+CCT LED controllers, drivers, or lighting fixtures via Umi wireless protocol. There are two power supply options AC power or cell battery. The AC version can fit traditional wall installation with AC power and the battery version can be easily installed at any preferred place. Besides ON/OFF and dimming operation, the user can also adjust color and mixing mode by simple double-click operation.

AC version installation

1. Open the touch panel

The wall panel needs to be opened before installation. Please use a slot-type screwdriver to twist in the bottom side slot and open the panel. Please refer to picture 1.

2. Connect the AC power

Push the top of the connector on the bottom part back and insert the L and N AC power 2 cables. The maximum cable gauge is 1.5mm or AWG16.

CAUTION! Cut off the AC power before installation to avoid electric shock!

3. Install the panel

Install the bottom part of the wall socket with screws. After the bottom part is installed, clip the front panel part to the bottom part to finish the installation. Please refer to picture 3.

Battery version installation

1. Open the touch panel

The wall panel needs to be opened before installation. Please use a slot-type screwdriver to twist in the bottom side slot and open the panel. Please refer to picture 1.

2. Prepare the battery

For the new wall panel, please pull out the insulation tape under the battery. To change the battery please slide the battery out from the battery socket and install a new one. The battery type is CR2032. Please refer to picture 2.

3. Install the panel

Install the back cover to the preferred place with a screw or double-sided adhesive tape, then clip the front panel part to the back cover and finish the installation. Please refer to picture 4.

Operation

1. Pair/unpair the wall panel to receiver

The wall panel needs to be paired with the receiver to work. Users can pair up to 5 wall panels to one receiver and each wall panel can be paired to any receiver.

To pair or unpair the wall panel to the receiver, please operate with 2 steps:

1. Cut off the power of the receiver and power it on again after more than 5 seconds.
2. Within 10 seconds of the receiver being powered on, press the knob 5 times continuously and quickly to pair the panel; To unpair the panel, please press 7 times instead of 5.

2. Turn on/off the lights

Press the knob to turn on/off the lights. When the lights are off, rotating the knob clockwise will also turn the

lights on to the previous brightness.

3. Turn on to minimum brightness

When the lights are off, rotating the knob counterclockwise will turn on the lights to the minimum brightness level.

4. Dim up and down

Rotate the knob clockwise to dim up and counterclockwise to dim down. There's no position limit for the rotary knob, the user can endlessly rotate the knob in one direction.

5. Adjust color

For working with multi-color receivers, the user can double-click the switch to activate the color-adjusting mode. After the double click, rotating will swap to the color-adjusting function shortly. The rotating will swap back to the dimming function after no operation for a while.

6. Change RGB/White mixing mode

For RGB+White and RGB+CCT applications, the user can switch the color mixing mode between white(CCT), RGB, and White(CCT)+RGB mode. To click the key 3 times rapidly, the color mixing mode on the receiver will change.


7. Turn ON/OFF beep sound

A beeper is equipped in the panel and the beep sound is ON as default. To turn on/off the beeper sound, please hold press the switch for about 1 second, the beeper on/off status will swap.

Specification

- AC version working voltage AC90-265V
- Battery version working voltage DC3V, CR2032 battery
- Wireless protocol Umi protocol based on SIG BLE Mesh
- Frequency band 2.4GHz ISM band
- Wireless power < 7dBm
- Working temperature -20-55 C(-4-131 F)
- Panel dimension 86x86x10mm (Europe standard).

Documents / Resources

	Rayrun BW01-C Wall Panel Rotary Remote Controller [pdf] User Manual BW01-C Wall Panel Rotary Remote Controller, BW01-C, Wall Panel Rotary Remote Controller, Wall Panel Rotary, Wall Panel, Panel
---	--