



Rayrun BR02-C Smart Wireless LED Remote Controller User Manual

[Home](#) » [RayRun](#) » Rayrun BR02-C Smart Wireless LED Remote Controller User Manual 



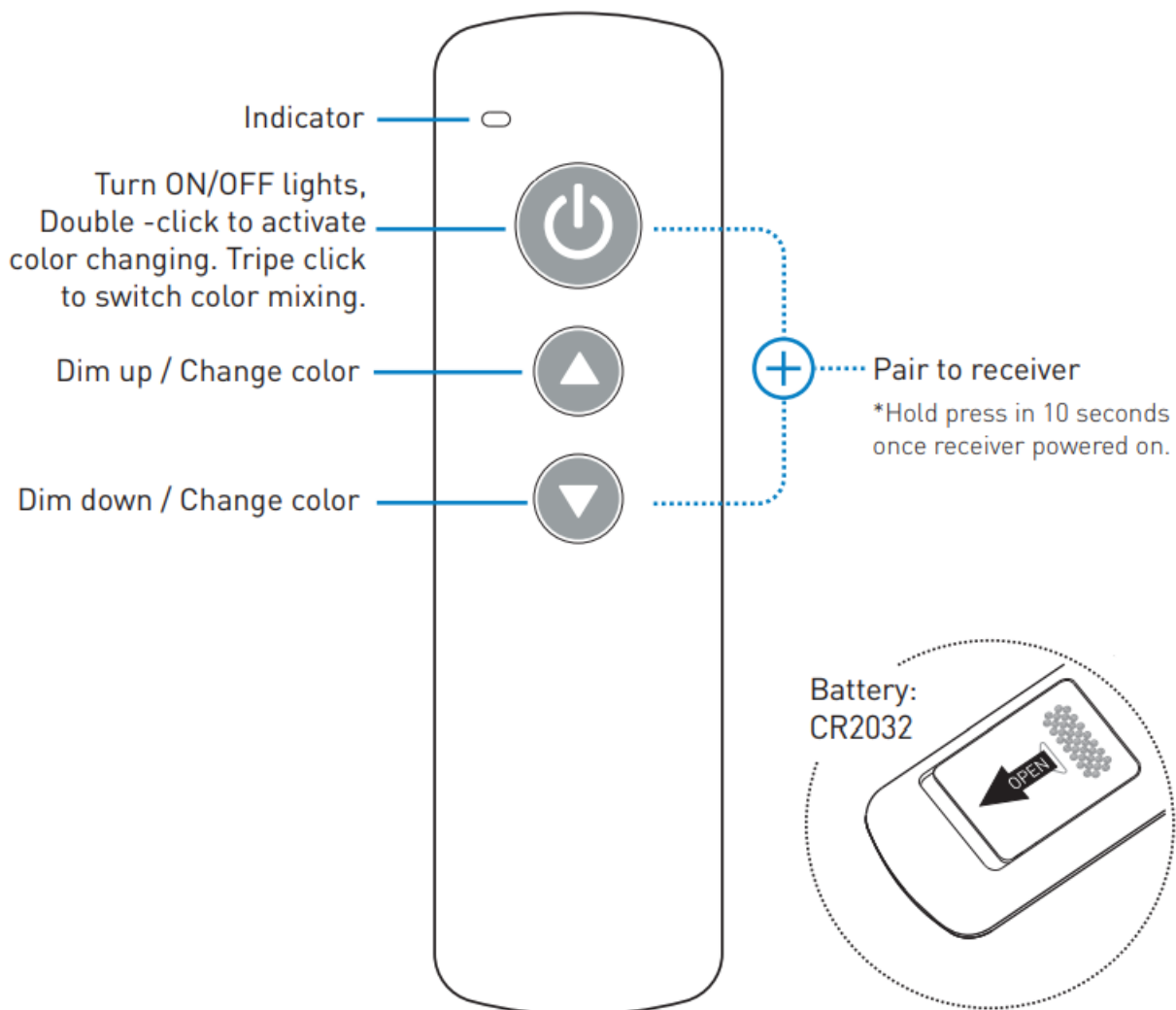
Umi Smart Wireless
LED Remote Controller
Model: BR02-C

General Purpose Dimming & Color Control

Contents

- [1 Function](#)
- [2 Operation](#)
- [3 Specification](#)
- [4 Documents / Resources](#)
- [5 Related Posts](#)

Function





Operation

1. Pair the remote to receiver

The remote controller needs to be paired to receiver to work. User can pair up to 5 remote controllers to one receiver and each single remote controller can be paired to any receiver.

To pair a new remote to the receiver, please operate with following two steps:

1. Cut off the power of receiver and power on again after more than 5 seconds.
2. Hold press remote  and  key simultaneously and briefly within 10 seconds after receiver powered on.

After this operation, the remote is paired to the receiver and ready to work.



2. Unpair the remote controller

To unpair the remote from the receiver, please operate with following two steps:

1. Cut off the power of receiver and power on again after more than 5 seconds.
2. Hold press all 3 keys simultaneously within 10 seconds after receiver powered on.


After this operation, the remote will be unpaired from receiver.

3. Adjust color

For working with multi-color receivers, user can double click the key to activate the color adjusting mode. After double click, the  and  key will swap to color adjusting function shortly. The indicator will flash at the color adjusting mode. The up and down key will swap back to dimming function after no operation for a while.

4. **Change RGB/White mixing mode**

For RGB+White and RGB+CCT application, user can switch the color mixing mode between white(CCT), RGB and White(CCT)+RGB mode.

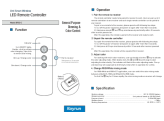
To click the  key for 3 times rapidly, the color mixing mode on receiver will change.

Specification

Working voltage	DC 3V, CR2032 battery
Wireless protocol	Umi protocol based on SIG BLE Mesh
Frequency band	2.4GHz ISM band
Wireless power	< 7dBm
Working temperature	-20-55 C(-4-131 F)



Documents / Resources

	Rayrun BR02-C Smart Wireless LED Remote Controller [pdf] User Manual BR02-C Smart Wireless LED Remote Controller, BR02-C, Smart Wireless LED Remote Control ler, LED Remote Controller, Remote Controller, Controller
---	---