



## raydrop KC-RD05 Humidifier User Manual

[Home](#) » [raydrop](#) » raydrop KC-RD05 Humidifier User Manual 

### Contents

- [1 raydrop KC-RD05 Humidifier](#)
- [2 Package Contents](#)
- [3 SAFETY INFORMATION](#)
- [4 SPECIFICATIONS](#)
- [5 PRODUCT DIAGRAM](#)
- [6 FUNCTIONS](#)
- [7 CARE & MAINTENANCE](#)
- [8 Cleaning & Descaling](#)
- [9 TROUBLESHOOTING](#)
- [10 WARRANTY](#)
- [11 Documents / Resources](#)
  - [11.1 References](#)
- [12 Related Posts](#)

raydrop

raydrop KC-RD05 Humidifier



## Package Contents



Humidifier × 1



User Manual × 1

## SAFETY INFORMATION

A To reduce the risk of fire, electric shock, or other injuries. follow all instructions and safety guidelines.

### General Safety

- Repair or remodeling by an unauthorized person may result in serious harm and will void the manufacturer's warranty.

- If the humidifier is damaged or is not functioning properly. stop using it and contact Customer Support immediately.
- Please always keep the humidifier out of reach of children & pet.
- Do not use the humidifier in wet environments.
- Always place the unit 12 inches (30 cm) away from the wall other appliances or wooden furniture.
- Do not handle the plug with wet hands.
- Please check the cord for any signs of damage. DO NOT use the humidifier if the cord has been damaged
- Do not cover the nozzle while the humidifier is on and do not use without the nozzle.
- Do not move or tilt the humidifier while it is in operation.
- Do not fill the water tank with hot or boiling water.
- Do not use this product in direct sunlight or near a heat source such as a stove, heater or radiator.

- Use clean or distilled water in the tank. Hard water areas will require more frequent cleaning.

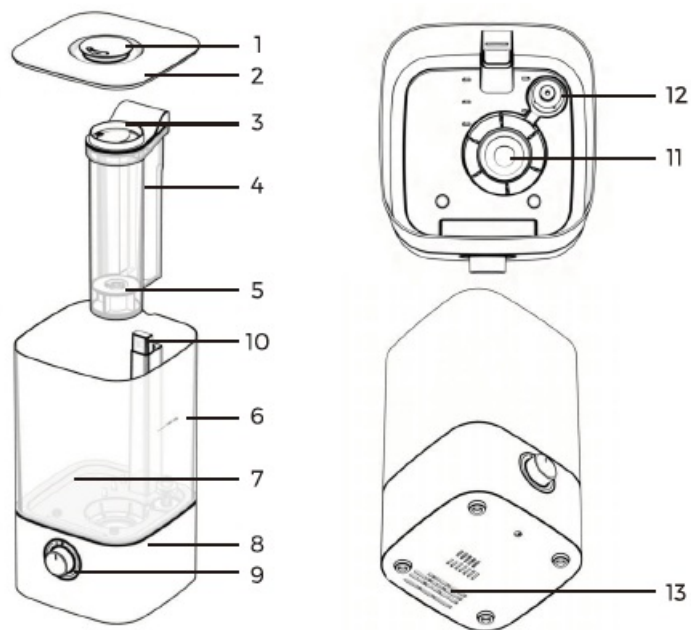
## SPECIFICATIONS



Model	KC-RD05
Rated Voltage	110V
Capacity	0.66 gal(2.5L)
Rated Power	25W
Noise Level	≤30dB
Dimensions	6.5*6.1*11 inches(16.5*15.5*28.0 cm)
Net Weight	1.92 lbs(0.87kg)

## PRODUCT DIAGRAM

1. Nozzle
2. Tank Cover
3. Water Baffle
4. Mist Tube
5. Ultrasonic Converging Circle
6. Max Water Line
7. Water Tank
8. Base
9. Control Knob
10. Air Outlet
11. Atomizer
12. Floater (low water level sensor)
13. .Air Inlet



## FUNCTIONS

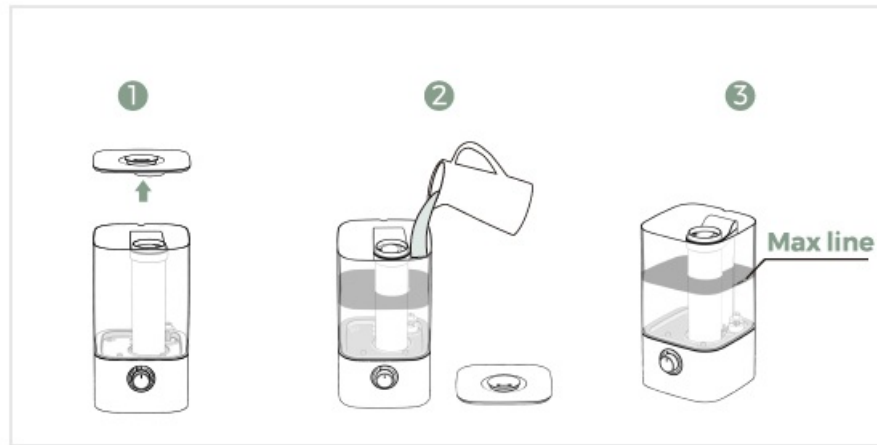
### Power On/Off & Mist Level Setting

1. Plug in the humidifier.
2. **Power On:** Turn the knob dial to the clockwise until it 'clicks' to turn on the humidifier. The indicator light would be green and produce mist.
3. Mist Level Setting: Rotate the knob dial to adjust the mist level.
4. Power Off: Turn the knob dial counterclockwise until it 'clicks' again to turn off the humidifier. Auto Shut-off  
When the humidifier runs out of water, it would stop producing mist and the indicator light turns red.

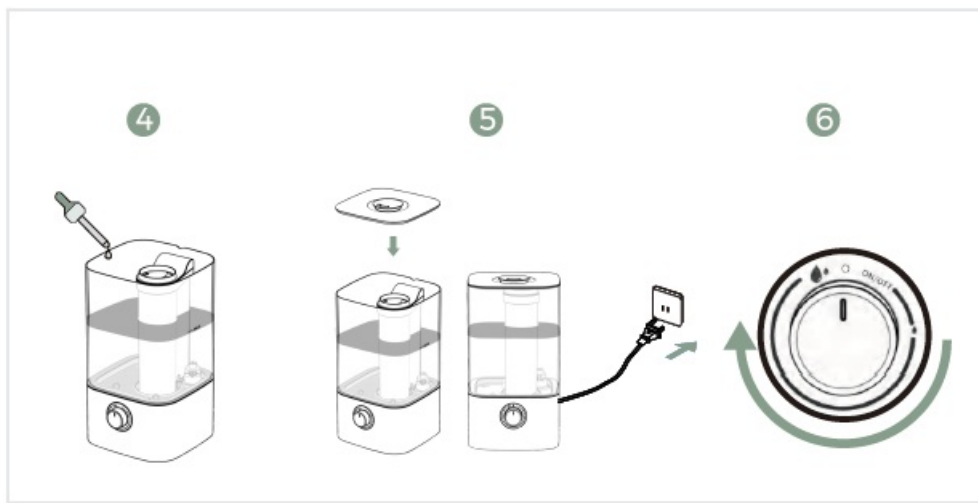


## GETTING STARTED

1. Put the machine on a flat platform, and remove the water tank cover.
2. Fill the tank with room-temperature water(purified or distilled water is recommended).
3. DO NOT fill humidifier above the max line.

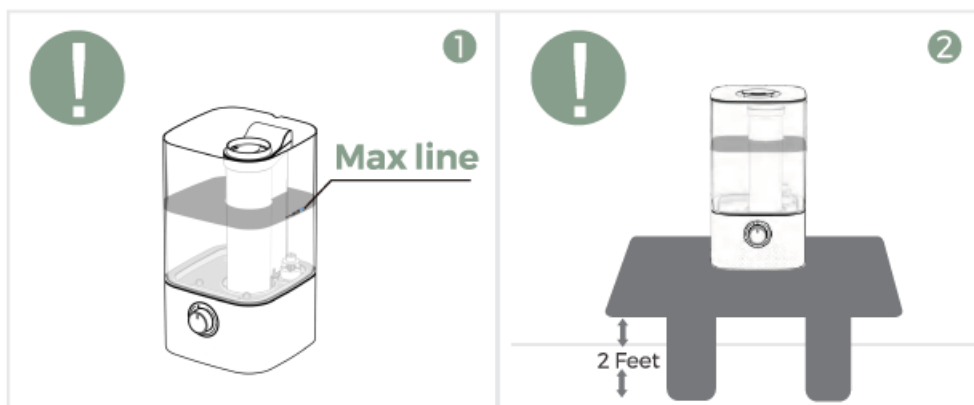


4. You can add essential oils into the water tank and enjoy the aromatherapy.
5. Replace the water tank cover and plug in the humidifier.
6. Rotate the control knob clockwise to turn on the humidifier.



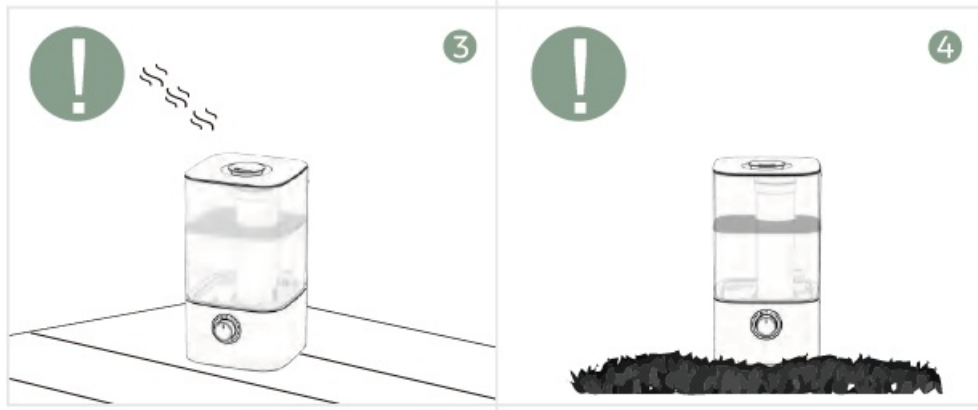
## IMPORTANT TIPS

1. DO NOT fill humidifier above the Max Line. This can cause little or no mist and damage the humidifier.
2. Please always place this humidifier on a firm, flat & water-resistant surface at least 2-4 feet above the floor where the most airflow is. Placing a humidifier in a corner, on the floor, or near a wall where get less airflow, will get localized higher humidity levels but the rest of the room will still feel dry.



3. It is not recommended to place this humidifier directly on wood furniture or floor, because the locally high humidity levels may wet the surroundings. Please put a tray underneath the humidifier if you place the humidifier on a non-waterproof surface.

4. Place this product on cloth or carpet that may block air inlet. Attention to whether the mist output of the humidifier is affected if you do that. 07



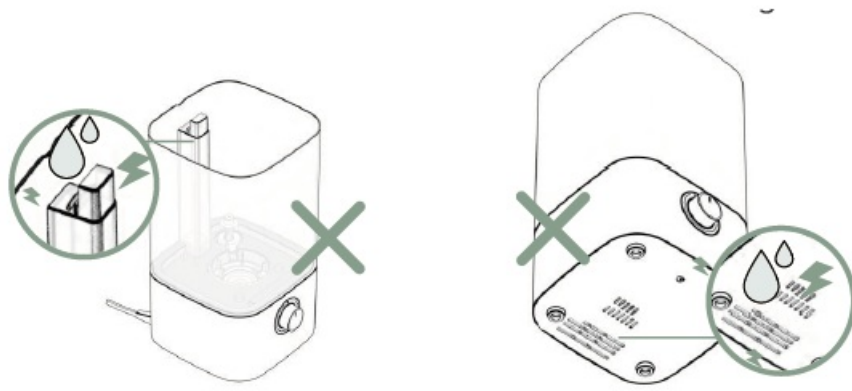
## CARE & MAINTENANCE

- You should clean your humidifier every week and when you're ready to store it.
- All maintenance should be done on a water-resistant surface such as a kitchen counter.
- Change the water daily to avoid bacteria growth.
- If not using the humidifier for 3 days or longer, do not leave water inside. Clean and dry the humidifier instead.
- Distilled or purified water is recommended to fill the humidifier. In some areas, water is richer in minerals. The humidifier won't instantly go haywire if you do use tap water, but in the long term will cause scale and you need to maintain it more often.

## CAUTION

1. Please avoid the water into the air outlet and air inlet while cleaning, or filling water, which will damage the electrical components.

**Note:** The water baffle is used to prevent water from entering the air outlet when adding water.

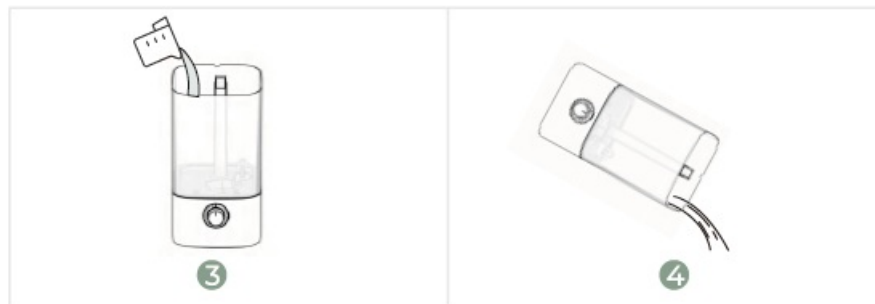


## Cleaning & Descaling

1. Turn off and unplug the humidifier. Empty the tank.



2. Remove the and rinse water tank cover, mist tube, water baffle, and ultrasonic converging circle.
3. Fill the water tank with 1 US cup / 237 mL of distilled white vinegar. Let it sit for 15-20 minutes.
4. Empty the tank.



5. Use a soft cloth to clean all parts.
6. Rinse all parts until any vinegar smell is completely gone.
7. Dry all parts with a cloth. Make sure all parts are completely dry before reassembling or storing.



### Reassembling

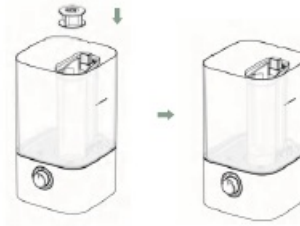
Please reassemble the humidifier after cleaning. Make sure that the water baffle and mist tube are firmly installed before use. The ultrasonic converging circle should be in the mist tube. Otherwise, it will cause little or no mist and reduce the performance of the humidifier.





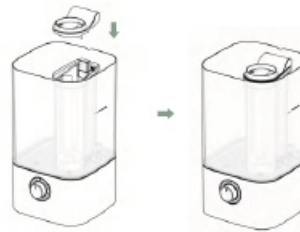
2.

Place the ultrasonic converging circle back into the mist tube.



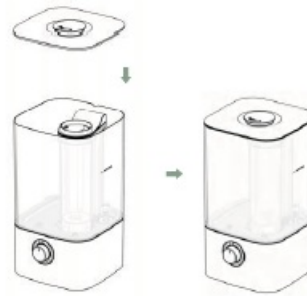
3.

Place the water baffle on the mist tube.



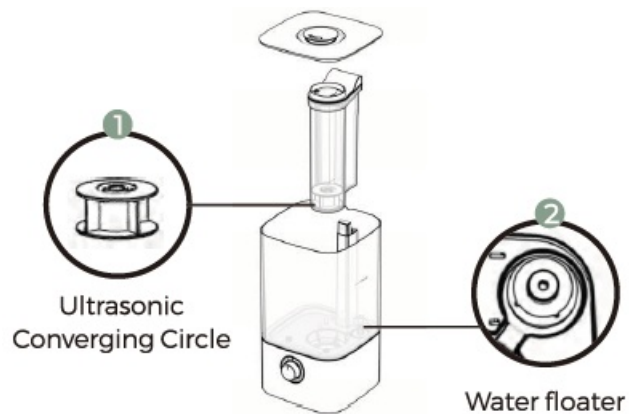
4.

Place the tank cover on the water tank.



**Note:** The ultrasonic converging circle is used for converging ultrasonic to atomize water.

## TROUBLESHOOTING



Problem	Possible Cause
Humidifier doesn't turn on. (Indicator light doesn't turn on)	Ensure the unit is properly plugged into a power outlet / try another power outlet.
Little or no mist comes out (Green Light)	Make sure the mist tube is clicked into place.
	Make sure the ① ultrasonic converging circle is in the mist tube and floating on the water.
	Make sure the water of tank doesn't exceed the max line.
	Turn the mist level to a higher setting.
	Mineral buildup on the atomizer. Clean atomizer (see Cleaning & Descaling, page 9).
	Make sure the air inlet on the bottom of the base is not blocked.
	Make sure the nozzle is not blocked or clogged.
	Make sure the humidifier is on a level surface.
	Water in unit is too cold: Replace with cool water.

Problem	Possible Cause
Condensation forms around humidifier.	Humidity is too high instead of leaking. Set a lower mist level.
	Place this humidifier on a water-resistant surface at least 2-4 feet above the floor where the most airflow is.
White dust appears around the humidifier.	Use purified or distilled water to fill the humidifier. Avoid using water with high mineral content.
	Clean the humidifier (see Cleaning & Descaling, page 9).
Humidifier produces an unusual smell.	Clean the water tank and base chamber (see Cleaning & Descaling, page 9).

Problem	Possible Cause
Indicator light turn red	Not enough water in the tank, Please refill the tank.
	② Floater gets stuck. Adjust the water Floater to a horizontal position and make sure it can rise up with water.
Water leaks from the humidifier.	Leak from TANK: Check for possible cracks in the tank or around the seam of the tank.
	Leak from BASE: Contact Customer Support (see page 15).

## WARRANTY

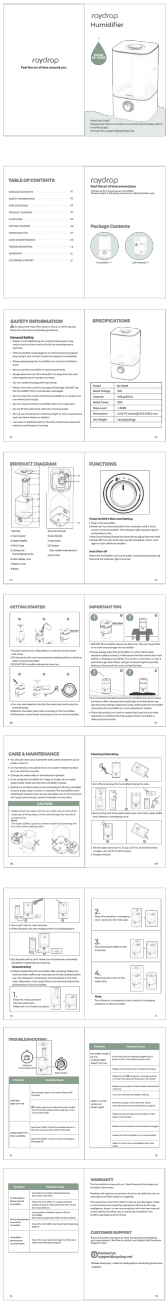
This humidifier comes with an 1 Year Warranty that begins on the date of purchase. Raydrop will replace any product found to be defective due to manufacturer flaws based on eligibility. This warranty is void if the defect is due to any damages, losses, or inconveniences caused by equipment failure by the user negligence, abuse, or use noncompliant with the user manual or any additional safety, use, or warnings included in the product packaging and manual.

## CUSTOMER SUPPORT

If you encounter any issues or have any questions regarding your new product, feel free to contact our helpful the Customer Support Team. Contact Us: [support@raydrop.net](mailto:support@raydrop.net) \*Please have your order ID ready before contacting Customer Support.

## Documents / Resources

--	--



[raydrop KC-RD05 Humidifier](#) [pdf] User Manual  
rd05, KC-RD05 Humidifier, KC-RD05, Humidifier

--	--

References

- [User Manual](#)