



Contents [[hide](#)]

- 1 Raychem RayClic-S Connection System
- 2 Specifications
- 3 DESCRIPTION
- 4 TOOLS REQUIRED
- 5 OPTIONAL ACCESSORIES
- 6 APPROVALS
- 7 KIT CONTENTS
- 8 SPLICE, TEE, AND CROSS INSTALLATION
- 9 HWAT ONLY
- 10 ICESTOP AND XL-TRACE EDGE ONLY
- 11 ROOF INSTALLATION
- 12 END SEAL INSTALLATION
- 13 TROUBLESHOOTING GUIDE
- 14 HEATING CABLE CIRCUIT TESTING
- 15 Documents / Resources
 - 15.1 References



Raychem RayClic-S Connection System



Specifications

- Product Name: RayClic Connection System
- Compatible with: Raychem IceStop, XL-Trace Edge, and HWAT heating cables
- Installation: Pipe or wall mounted

DESCRIPTION

- Raychem RayClic-S Splice Kit
- Raychem RayClic-T Tee and End Seal Kit
- Raychem RayClic-X Cross and End Seal Kit
- These kits are for use with Raychem IceStop,
- XL-Trace Edge and HWAT heating cables. The connection is designed to be strapped to the pipe, or wall mounted.
- These installation instructions should be used in conjunction with the IceStop, XL-Trace Edge, and HWAT System Installation and Operation Manuals. For technical support, contact your Chemelex representative or call Chemelex (800) 545.6258.

TOOLS REQUIRED

- TORX T20 screw driver
- Utility knife
- Wire cutters

OPTIONAL ACCESSORIES

(NOT INCLUDED IN THIS KIT)

- Raychem RayClic-SB-02 Wall mounting bracket
- Raychem RayClic-SB-04 Pipe mounting bracket

APPROVALS



Pipe Heating System 718K, ALSO LISTED De-icing and Snow Melting Equipment 877Z, AND De-icing and Snow Melting Equipment FOR USE IN HAZARDOUS LOCATION E538285 Hazardous Location Class I Div. 2 Group A, B, C, D T6 when installed with GM-1XT and GM-2XT only $-40^{\circ}\text{C} \leq T_{\text{ambient}} \leq +40^{\circ}\text{C}$

WARNING

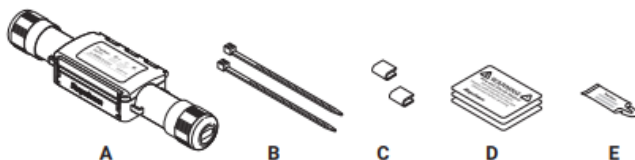
This component is an electrical device that must be installed correctly to ensure proper operation and to prevent shock or fire. Read these important warnings and carefully follow all the installation instructions.

- To minimize the danger of fire from sustained electrical arcing if the heating cable is damaged or improperly installed, and to comply with the requirements of Chemelex, agency certifications, and national electrical codes, ground fault equipment protection must be used. Arcing may not be stopped by conventional circuit breakers.
- Bus wires will short if they contact each other. Keep bus wires separated.
- Keep components and heating cable ends dry before and during installation.
- The black heating cable core is conductive and can short. It must be properly insulated and kept dry.
- Component approvals and performance are based on the use of Chemelex-specified parts only. Do not use substitute parts or vinyl electrical tape.
- Leave these instructions with end user for reference and future use.

KIT CONTENTS

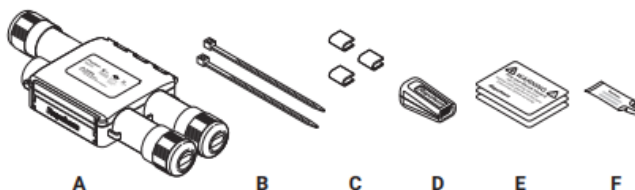
RayClc-S Splice Kit

Item	Qty	Description
A	1	Splice
B	2	Plastic cable ties
C	2	Clips
D	3	Labels (1 splice, 2 warning)
E	1	Cable lubricant (for use with HWAT cables only)



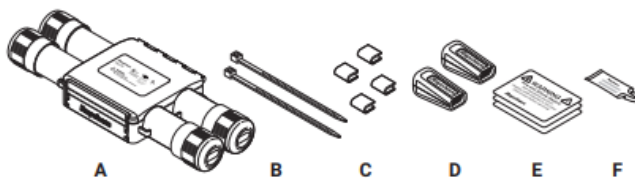
RayClc-T Tee Kit

Item	Qty	Description
A	1	Tee
B	2	Plastic cable ties
C	3	Clips
D	1	End seal
E	3	Labels (1 splice, 2 warning)
F	1	Cable lubricant (for use with HWAT cables only)

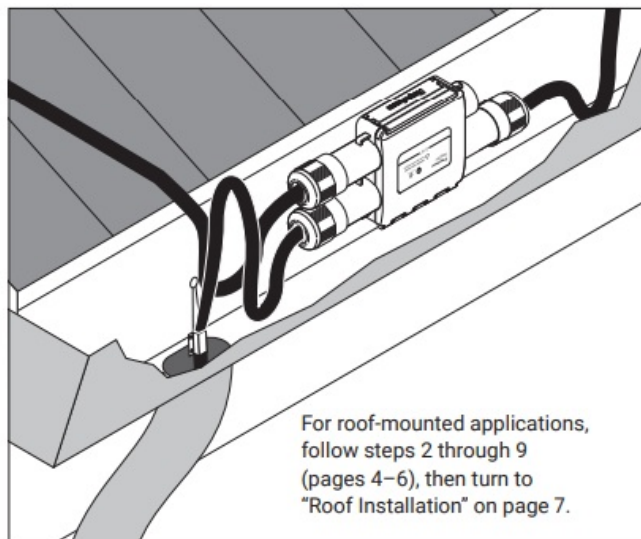
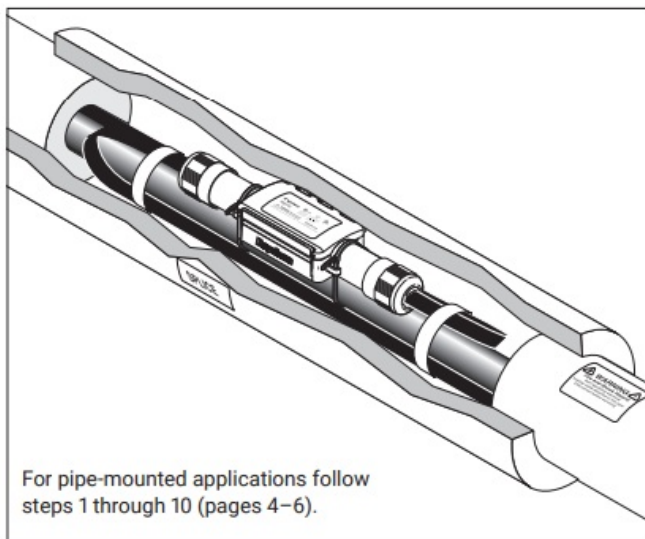


RayClc-X Cross Kit

Item	Qty	Description
A	1	Cross
B	2	Plastic cable ties
C	4	Clips
D	2	End seals
E	3	Labels (1 splice, 2 warning)
F	1	Cable lubricant (for use with HWAT cables only)



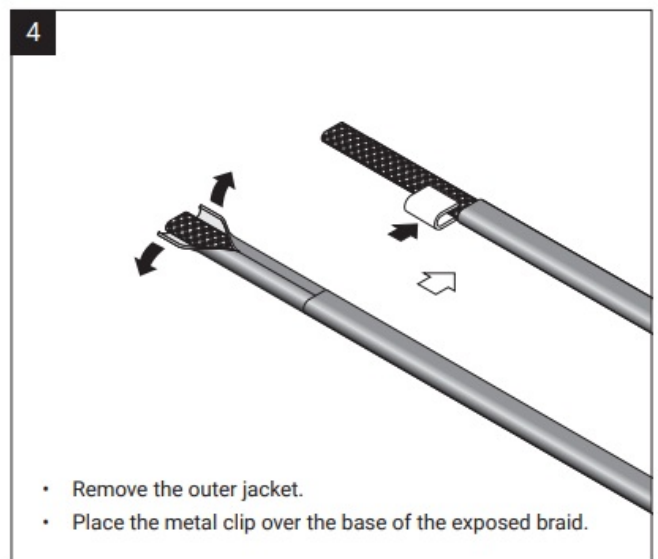
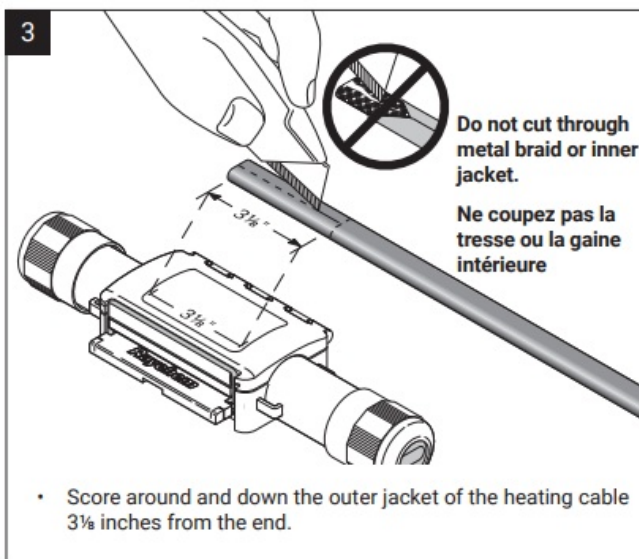
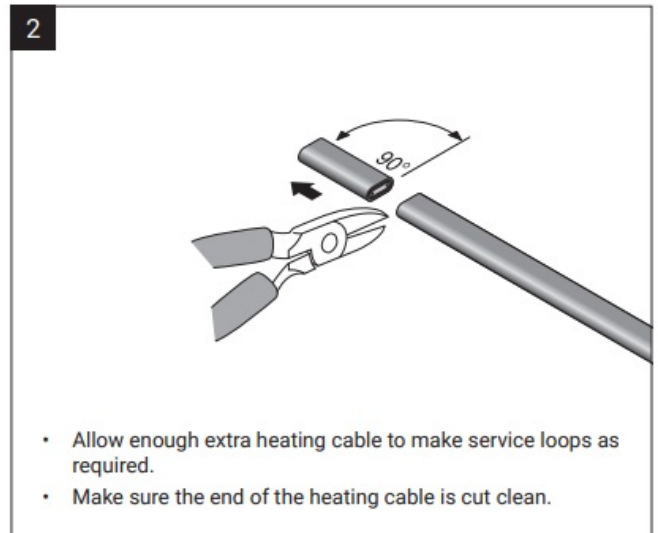
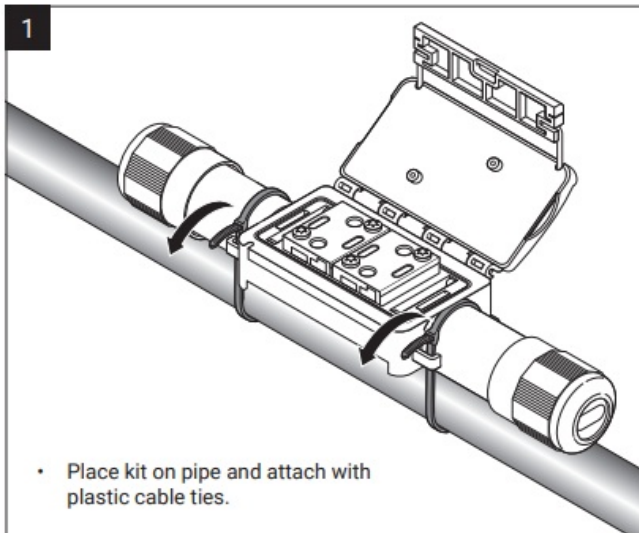
If you experience difficulty during installation, refer to the “Troubleshooting Guide”.



SPLICE, TEE, AND CROSS INSTALLATION

- Place kit on pipe and attach with plastic cable ties.
- Allow enough extra heating cable to make service loops as required.
- Make sure the end of the heating cable is cut clean.
- Score around and down the outer jacket of the heating cable $3\frac{1}{8}$ inches from the end.

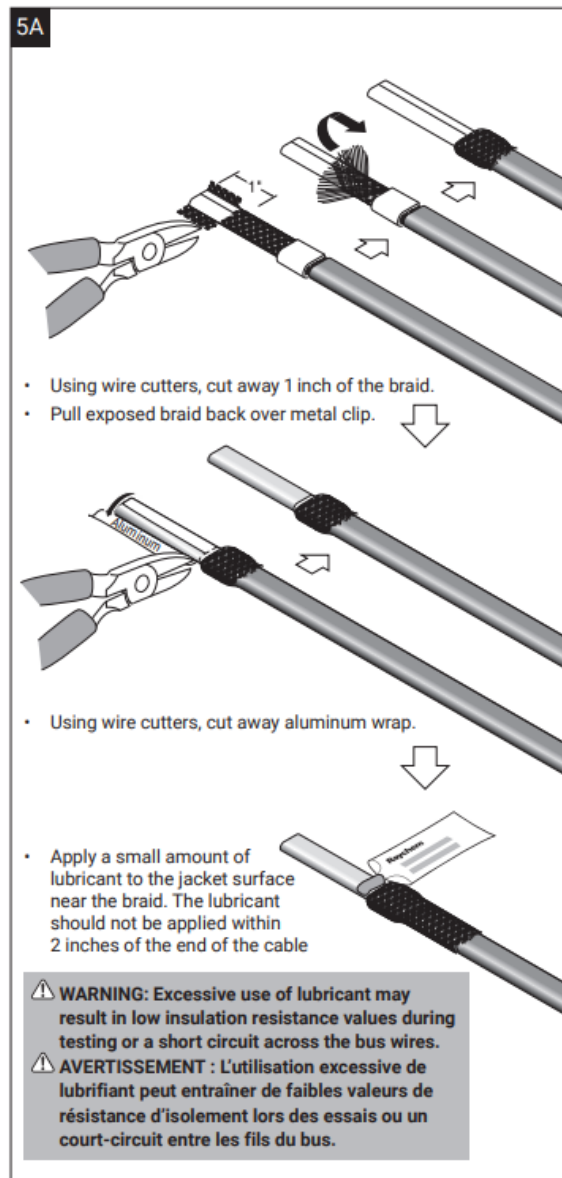
- Remove the outer jacket.
- Place the metal clip over the base of the exposed braid.



HWAT ONLY

- Using wire cutters, cut away 1 inch of the braid.
- Pull exposed braid back over metal clip.
- Using wire cutters, cut away aluminum wrap.
- Apply a small amount of lubricant to the jacket surface near the braid. The lubricant should not be applied within 2 inches of the end of the cable

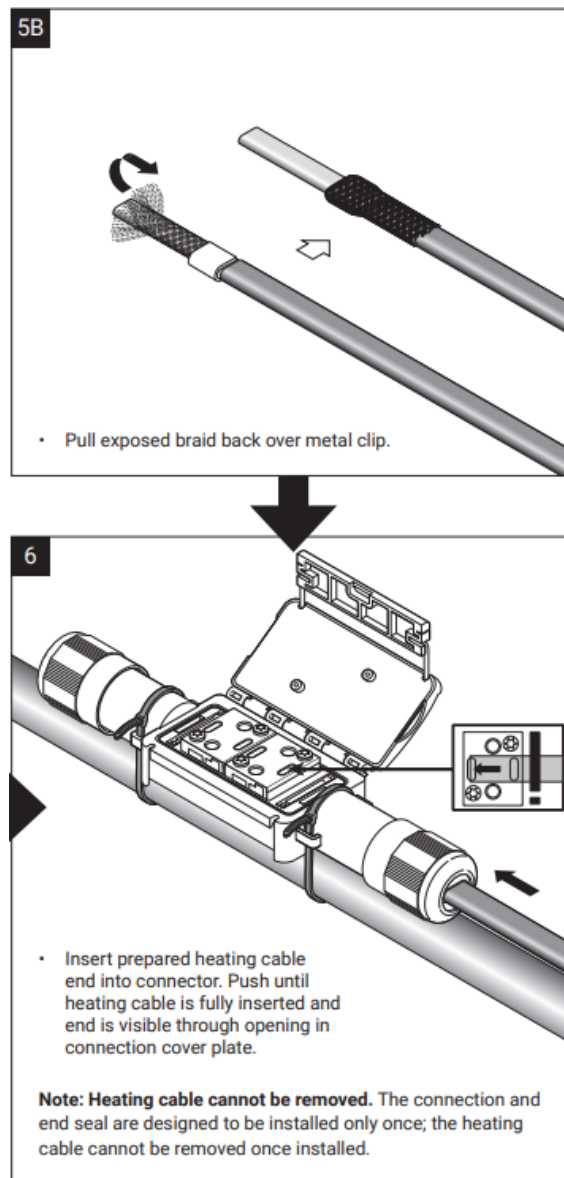
WARNING: Excessive use of lubricant may result in low insulation resistance values during testing or a short circuit across the bus wires.



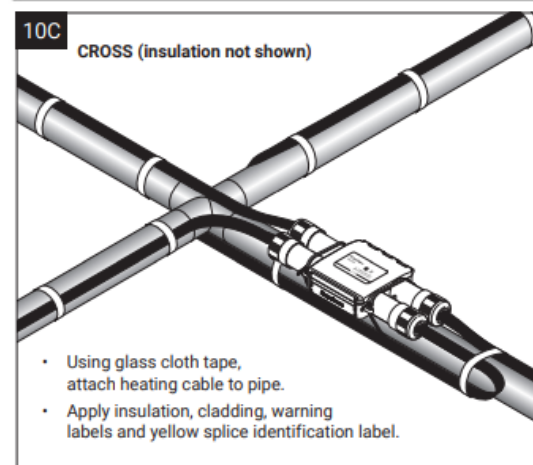
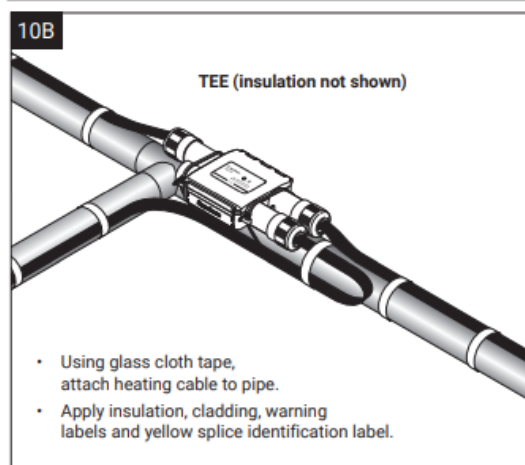
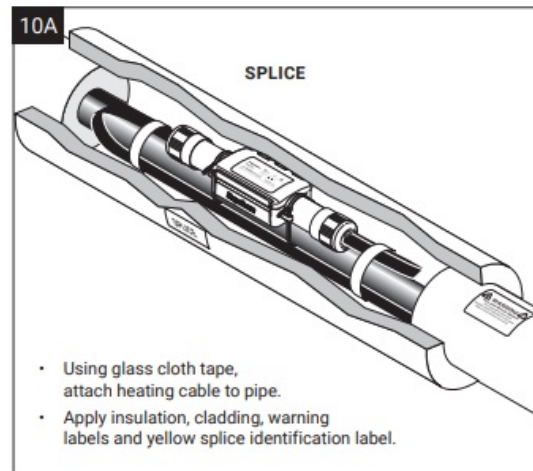
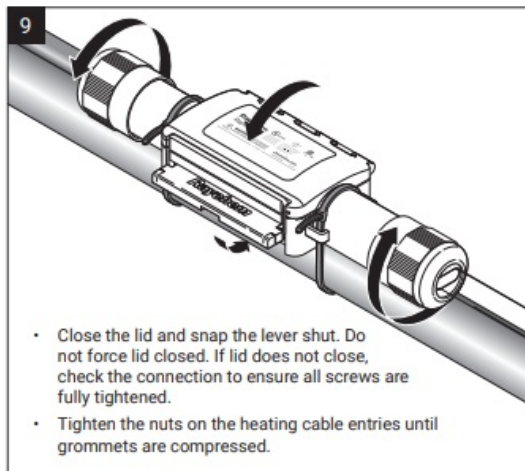
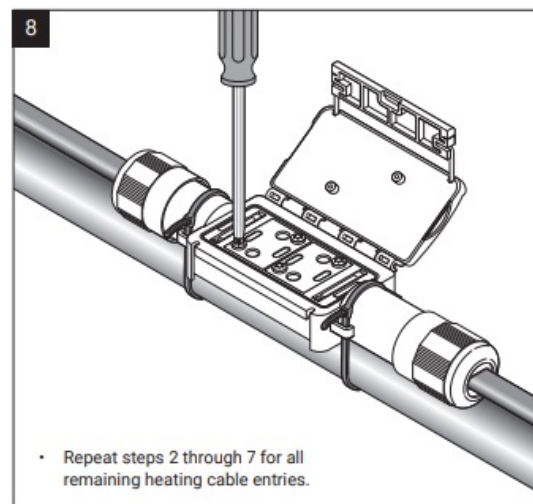
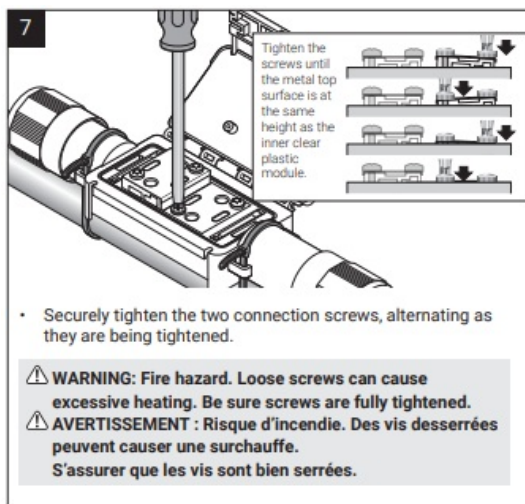
ICESTOP AND XL-TRACE EDGE ONLY

- Pull exposed braid back over metal clip.
- Insert prepared heating cable end into connector. Push until heating cable is fully inserted and end is visible through opening in connection cover plate.

Note: Heating cable cannot be removed. The connection and end seal are designed to be installed only once; the heating cable cannot be removed once installed.



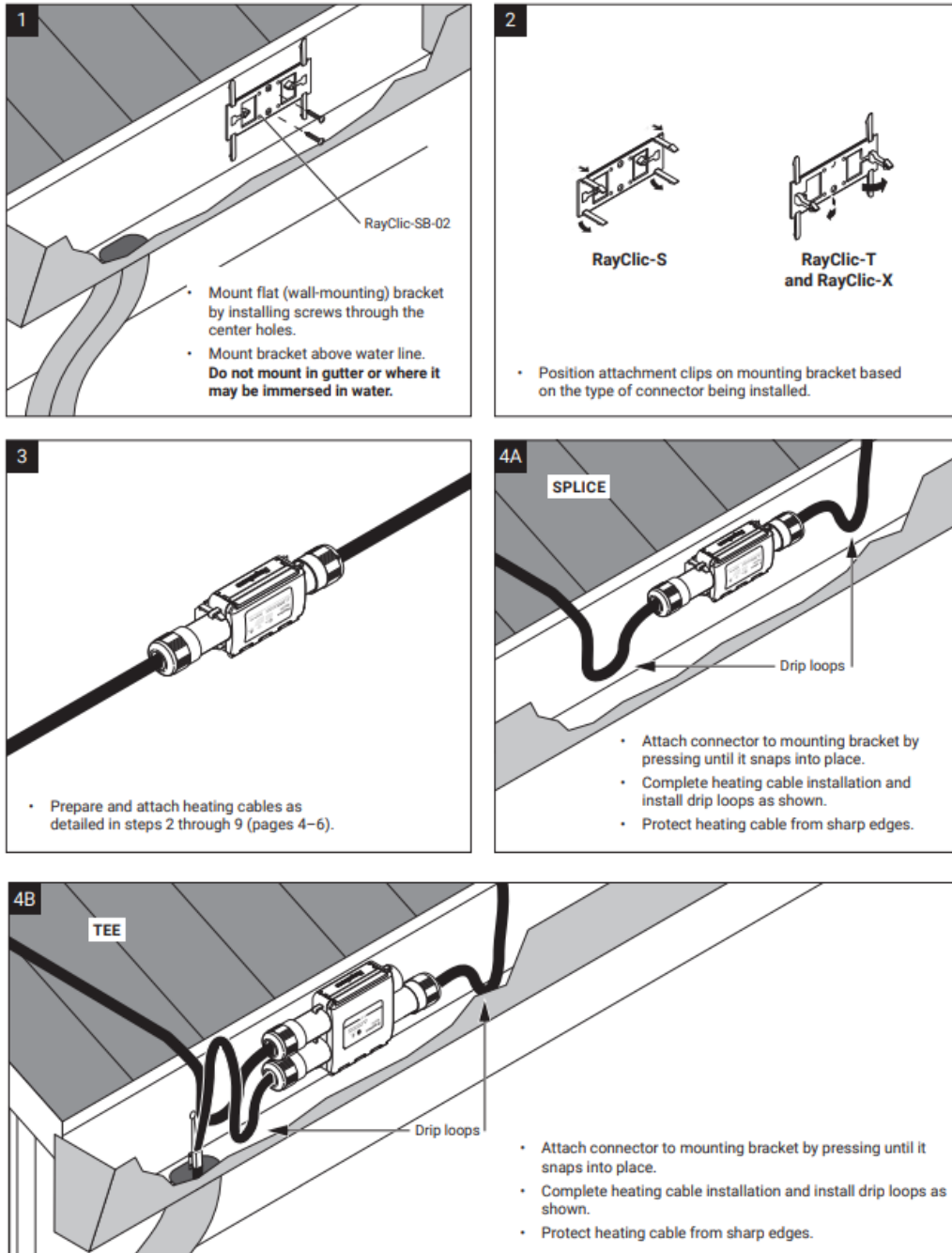
- Securely tighten the two connection screws, alternating as they are being tightened.
WARNING: Fire hazard. Loose screws can cause excessive heating. Be sure screws are fully tightened.
- Close the lid and snap the lever shut. Do not force lid closed. If lid does not close, check the connection to ensure all screws are fully tightened.
- Tighten the nuts on the heating cable entries until grommets are compressed.
- Using glass cloth tape, attach heating cable to pipe.
- Apply insulation, cladding, warning labels and yellow splice identification label.
- Repeat steps 2 through 7 for all remaining heating cable entries.
- Using glass cloth tape, attach heating cable to pipe.
- Apply insulation, cladding, warning labels and yellow splice identification label.
- Using glass cloth tape, attach heating cable to pipe.
- Apply insulation, cladding, warning labels and yellow splice identification label.



ROOF INSTALLATION

- Mount flat (wall-mounting) bracket by installing screws through the center holes.
- Mount bracket above water line. Do not mount in gutter or where it may be immersed in water.
- Position attachment clips on mounting bracket based on the type of connector being installed.
- Prepare and attach heating cables as detailed in steps 2 through.
- Attach connector to mounting bracket by pressing until it snaps into place.

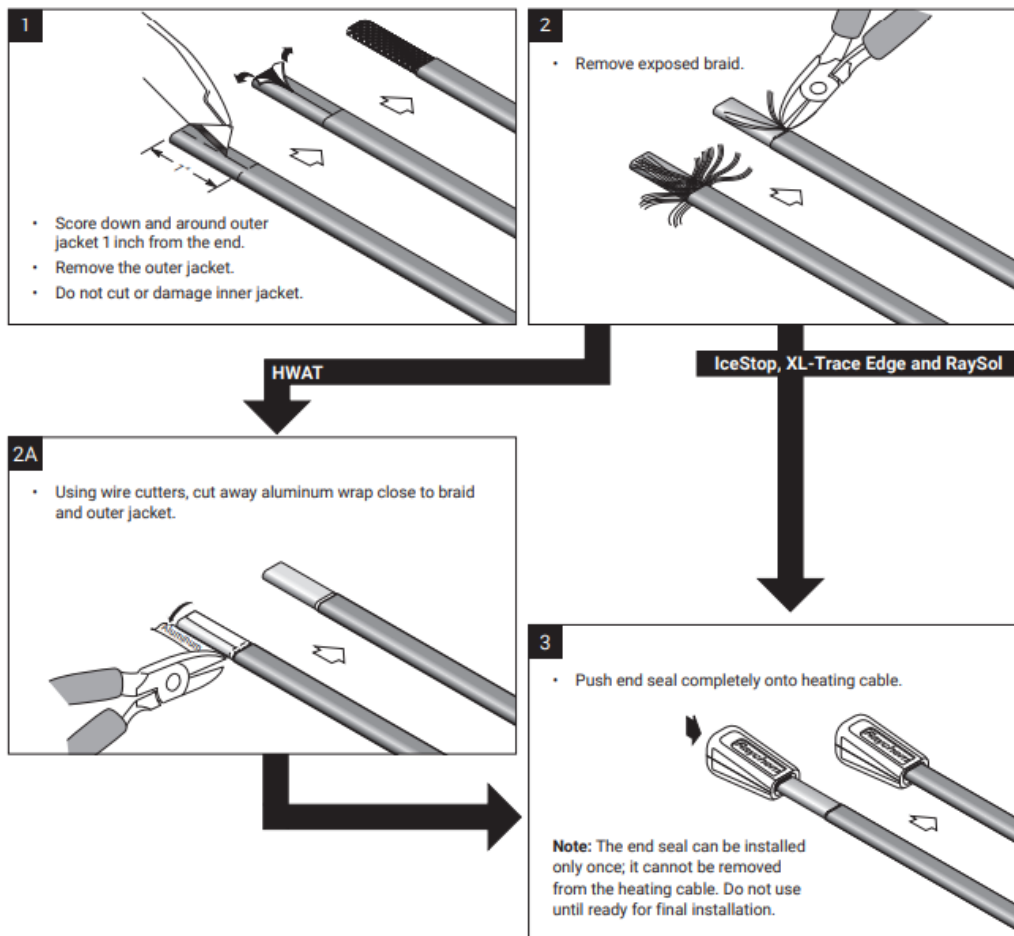
- Complete heating cable installation and install drip loops as shown.
- Protect heating cable from sharp edges.
- Attach connector to mounting bracket by pressing until it snaps into place.
- Complete heating cable installation and install drip loops as shown.
- Protect heating cable from sharp edges.



END SEAL INSTALLATION

- Score down and around outer jacket 1 inch from the end.
- Remove the outer jacket.
- Do not cut or damage inner jacket.
- Remove exposed braid.

- Using wire cutters, cut away aluminum wrap close to braid and outer jacket.
- Push end seal completely onto heating cable.



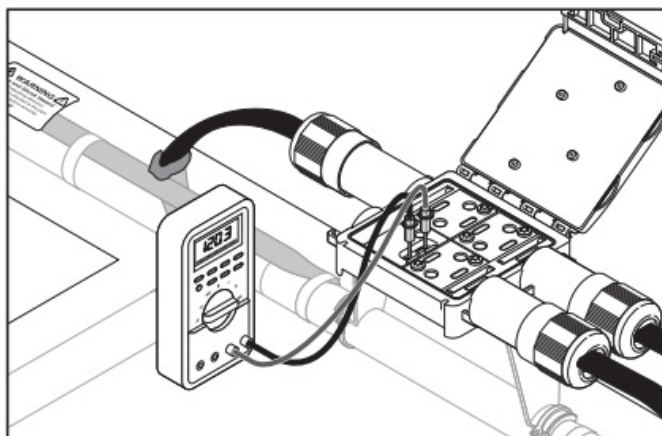
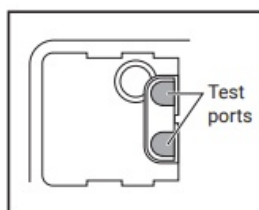
TROUBLESHOOTING GUIDE

Problem	Solution
Braid clips are missing.	The braid clips are attached to the cardboard packing insert under the lid. The braid clips must be used to ensure a ground connection. If clips are missing or lost, call Chemelex at (800) 545-6258.
Mounting bracket is missing.	A mounting bracket is not included in the splice, tee and cross kits. One can be ordered using one of the catalog numbers listed under "Optional Accessories" on the front page of these instructions when you place your order.
Connector does not snap onto bracket.	The bracket has two sets of attachment clips. Fold up the four outer clips for the splice kit. Fold up only the center clips for the tee and cross kits.
Heating cable type not mentioned.	Raychem RayClic connection kits are approved for use only with HWAT, XL-Trace Edge and IceStop heating cables. Do not use with other heating cables.
Braid clip does not fit.	Be sure the clip is installed on the metal braid, not on the outer jacket.
Heating cable does not have aluminum wrap.	Only HWAT heating cables have the aluminum wrap under the braid. Skip the aluminum wrap removal step for XL-Trace Edge and IceStop heating cables.
Heating cable cannot be inserted into connector.	Check for the following: <ul style="list-style-type: none"> • Apply cable lubricant to the heating cable primary (white) jacket. • Outer jacket strip length is 3½ inches. • Braid clip is installed on top of the metal braid, not on the outer jacket. • Braid is pulled back over braid clip. • For HWAT, 1 inch of braid is removed. • Sealing nut is loose (but not removed). • Connection screws are loose.
Lid does not close.	Be sure all screws are fully tightened before closing the lid.
Heating cable cannot be inserted into end seal.	The outer jacket must be removed from the heating cable before the end seal is installed (see the "End Seal Installation" instructions on page 8). Make sure 1 inch of the outer jacket, braid, and aluminum wrap (HWAT only) are removed.
Heating cable cannot be removed.	The connection and end seal are designed to be installed only once; the heating cable cannot be removed once installed. Additional Raychem RayClic-E end seals can be ordered from Chemelex.

HEATING CABLE CIRCUIT TESTING

The RayClic-T now includes test ports in the blank module. Voltage can be measured at these points to confirm continuity or power to the installed heating cable circuit. For detail heating cable operation refer to the appropriate installation and operating manual. Instructions:

1. Open the RayClic cover.
2. Set multimeter to AC voltage function.
3. Insert multimeter test probes into the two test ports. **WARNING:** To avoid shock do not cross the test probes or touch them to the metal pressure plate when measuring voltage.



North America

Tel +1 800 545 6258 info@chemelex.com

Latin America

Tel +1 713 868 4800 info@chemelex.com

Europe, Middle East, Africa, India

Tel +32 16 213 511 Fax +32 16 213 604 info@chemelex.com

Asia Pacific

Tel +86 21 2412 1688 infoAPAC@chemelex.com

chemelex
excellence is everything


Raychem Tracer Pyrotenax Nuheat

©2025 Chemelex. All Chemelex marks and logos are owned or licensed by Chemelex Europe GmbH or its affiliates. All other trademarks are the property of their respective owners. Chemelex reserves the right to change specifications without notice.

RAYCHEM-IM-H55388-RayClicConnectionKits-EN-2504

chemelex.com

Documents / Resources





[Raychem RayClic-S Connection System](#) [pdf] Instruction Manual

RayClic-S, RayClic-T, RayClic-X, RayClic-S Connection System, RayClic-S, Connection System

References

- [User Manual](#)

 Raychem

 Connection System, Raychem, RayClic-S, RayClic-S Connection System, RayClic-T, RayClic-

Leave a comment

Your email address will not be published. Required fields are marked *

Comment *

Name

Email

Website

☐ Save my name, email, and website in this browser for the next time I comment.

Post Comment

Search:

e.g. whirlpool wrf535swhz

Search

[Manuals+](#) | [Upload](#) | [Deep Search](#) | [Privacy Policy](#) | [@manuals.plus](#) | [YouTube](#)

This website is an independent publication and is neither affiliated with nor endorsed by any of the trademark owners. The "Bluetooth®" word mark and logos are registered trademarks owned by Bluetooth SIG, Inc. The "Wi-Fi®" word mark and logos are registered trademarks owned by the Wi-Fi Alliance. Any use of these marks on this website does not imply any affiliation with or endorsement.