



# RAWLPLUG FX-N-C-A2 Nylon Hammer In Fixing With Cylinder Head Installation Guide

[Home](#) » [RAWLPLUG](#) » RAWLPLUG FX-N-C-A2 Nylon Hammer In Fixing With Cylinder Head Installation Guide 

## Contents

- [1 RAWLPLUG FX-N-C-A2 Nylon Hammer In Fixing With Cylinder Head](#)
- [2 Product Information](#)
- [3 Installation data](#)
- [4 Features and Benefits](#)
- [5 Applications](#)
- [6 Base materials](#)
- [7 Base Materials](#)
- [8 Installation Guide](#)
- [9 FAQ](#)
- [10 Documents / Resources](#)
  - [10.1 References](#)
- [11 Related Posts](#)

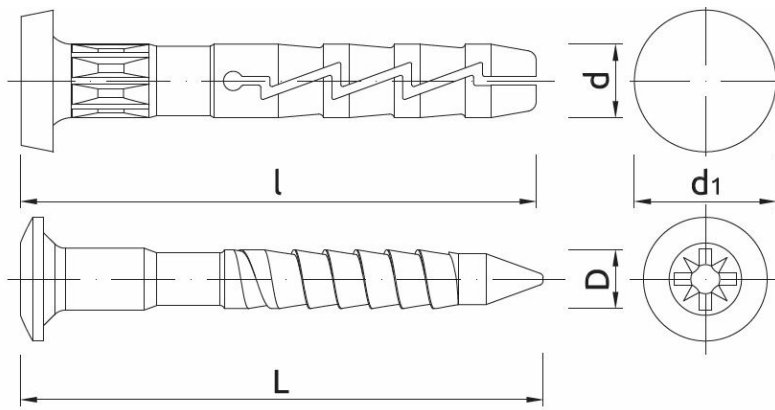


## RAWLPLUG FX-N-C-A2 Nylon Hammer In Fixing With Cylinder Head



## Product Information

The Lightweight Fixings are hammer-in fixings made from high-quality nylon. They are designed for fast, simple, and cost-effective installations.

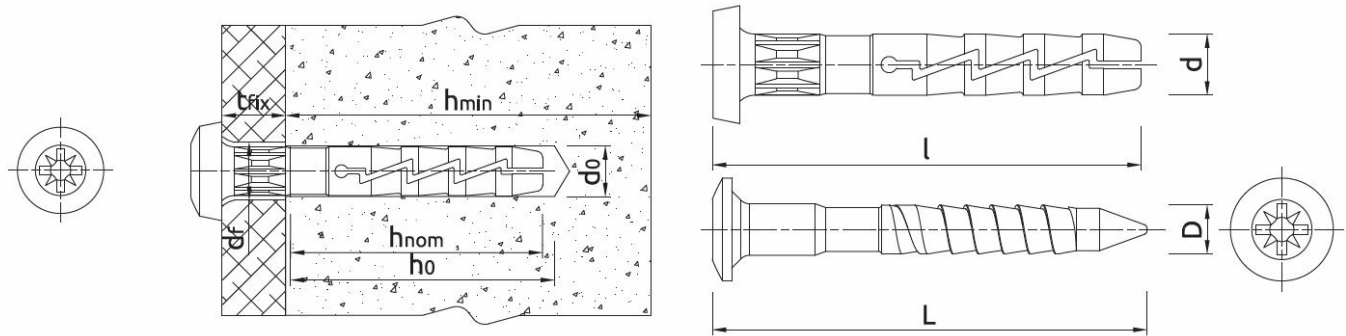


Size	Product Code	Plug		Fixture		Nail		Diameter
		Diameter	Length	Max. thickness	Hole diameter	Length	Diameter	
		d	l	t <sub>fix</sub>	d <sub>f</sub>	L	D	d <sub>1</sub>
		[mm]						
Ø6	R-FX-N-06C040-A2	5.9	40	11	7	44	3.8	11
Ø8	R-FX-N-08C060-A2	7.9	60	20	9	66	4.8	13.2
	R-FX-N-08C080-A2	7.9	80	40	9	86	4.8	13.2
	R-FX-N-08C100-A2	7.9	100	60	9	106	4.8	13.2

## Specifications

Size	Product Code	Plug Diameter (d)	Plug Length (l)	Fixture Max. Thickness (t)	Hole Diameter (d)	Nail Length (L)	Nail Diameter (D)
6	R-FX-N-06C040-A2	5.9 mm	40 mm	11 mm	7 mm	44 mm	3.8 mm
8	R-FX-N-08C060-A2	7.9 mm	60 mm	20 mm	9 mm	66 mm	4.8 mm
8	R-FX-N-08C080-A2	7.9 mm	80 mm	29 mm	40 mm	86 mm	4.8 mm
8	R-FX-N-08C100-A2	7.9 mm	100 mm	40 mm	100 mm	106 mm	4.8 mm

## Installation data



Installation data

Product dimensions

Size			Ø6	Ø8
Hole diameter in substrate	$d_0$	[mm]	6	8
Min. hole depth in substrate	$h_0$	[mm]	35	45
Min. installation depth	$h_{nom}$	[mm]	29	40
Min. substrate thickness	$h_{min}$	[mm]	100	100
Min. spacing	$s_{min}$	[mm]	100	100
Min. edge distance	$c_{min}$	[mm]	100	100
Fixing diameter	$d$	[mm]	6	8

## Basic performance data

Performance data for single fixing in tension without influence of edge distance and spacing

Substrate		Concrete C12/15	Concrete C16/20	Concrete C20/25 - C50/60	Solid clay brick min 20MPa (eg Mz20/Z.0)	Solid brick min. 30MPa	Sand-lime solid brick	Sand-lime hollow brick	Lightweight concrete hollow block	Lightweight concrete block	Autoclaved aerated concrete
POLYAMIDE PLUG											
MEAN ULTIMATE LOAD $N_{Ru,m}$											
TENSION LOAD $N_{Ru,m}$											
Ø06, Effective embedment depth 29 mm	[kN]	0.37	0.53	0.53	0.39	0.39	0.55	0.53	0.40	0.49	0.14
Ø08, Effective embedment depth 40 mm	[kN]	0.55	0.78	0.78	0.82	0.82	0.55	-	0.50	0.74	0.17
CHARACTERISTIC LOAD $N_{Rk}$											
TENSION LOAD $N_{Rk}$											
Ø06, Effective embedment depth 29 mm	[kN]	0.20	0.30	0.30	0.20	0.20	0.40	0.30	0.30	0.30	0.10
Ø08, Effective embedment depth 40 mm	[kN]	0.30	0.50	0.50	0.50	0.50	0.40	-	0.30	0.50	0.10
DESIGN LOAD $N_{Rd}$											
TENSION LOAD $N_{Rd}$											
Ø06, Effective embedment depth 29 mm	[kN]	0.10	0.15	0.15	0.10	0.10	0.20	0.15	0.15	0.15	0.05
Ø08, Effective embedment depth 40 mm	[kN]	0.15	0.25	0.25	0.25	0.25	0.20	-	0.15	0.25	0.05
RECOMMENDED LOAD $N_{rec}$											
TENSION LOAD $N_{rec}$											
Ø06, Effective embedment depth 29 mm	[kN]	0.07	0.11	0.11	0.07	0.07	0.14	0.11	0.11	0.11	0.04
Ø08, Effective embedment depth 40 mm	[kN]	0.11	0.18	0.18	0.18	0.18	0.14	-	0.11	0.18	0.04

## Product commercial data

Product Code	Plug	Quantity [pcs]			Weight [kg]			Bar Codes
	Diameter [mm]	Box	Outer	Pallet	Box	Outer	Pallet	
R-FX-N-06C040-A2	5.9	100	1600	38400	0.80	12.8	337.2	5906675336251
R-FX-N-08C060-A2	7.9	100	1200	28800	0.80	9.6	260.4	5906675336336
R-FX-N-08C080-A2	7.9	50	600	14400	0.68	8.2	227.0	5906675336343
R-FX-N-08C100-A2	7.9	50	600	14400	0.80	9.7	261.6	5906675336350

## Features and Benefits

- High-quality nylon construction
- Fast and simple installation
- Cost-effective
- Rapid hammer-set installation reduces the time required and allows for cost-effective, high-volume installation.
- The cylinder head prevents the plug from slipping into over-sized holes and allows fixed thin elements
- The combination of the PZ recess and the helical thread makes removal of the nail possible, facilitating disassembly when necessary.
- The extensive range of product lengths, diameters and head types ensures the availability of the correct fixing for every scenario.
- Designed for push-through installation.

## Applications

The Lightweight Fixings can be used in various applications, including:

- Concrete
- Clay brick
- Solid brick
- Sand-lime solid brick
- Sand-lime hollow brick
- Lightweight concrete hollow block
- Lightweight concrete block
- Autoclaved aerated concrete
- Timber or metal battens
- Drywall structures
- Skirting / Dado railing
- Cable clamps
- Pipe clamps

## Base materials

Approved for use in:

- • Concrete
- Solid Brick
- Solid Sand-lime Brick

- Hollow Sand-lime Brick
- Lightweight Concrete Block
- Hollow Lightweight Concrete Block
- Aerated Concrete Block

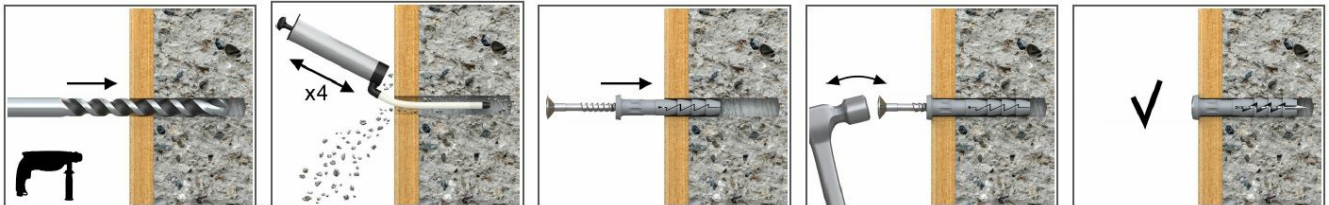
## Base Materials

The Lightweight Fixings are suitable for use in the following base materials:

- Concrete C12/15
- Concrete C16/20
- Concrete C20/25 – C50/60
- Solid clay brick min 20MPa (eg Mz20/2.0)
- Solid brick min. 30MPa
- Sand-lime solid brick
- Sand-lime hollow brick
- Lightweight concrete hollow block
- Lightweight concrete block
- Autoclaved aerated concrete

## Installation Guide

1. Drill a hole of the required diameter.
2. Insert the Lightweight Fixing plug into the hole through the fixture.
3. Hammer the nail into the plastic sleeve until the fixing is secure and flush with the fixture.



## FAQ

### Q: What are the available sizes and product codes for the Lightweight Fixings?

The available sizes and product codes for the Lightweight Fixings are as follows:

- **Size 6:** Product Code R-FX-N-06C040-A2
- **Size 8:** Product Code R-FX-N-08C060-A2
- **Size 8:** Product Code R-FX-N-08C080-A2
- **Size 8:** Product Code R-FX-N-08C100-A2

### Q: What is the recommended load for the Lightweight Fixings?

The recommended load for the Lightweight Fixings varies depending on the substrate and tension load. Please refer to the performance data table in the user manual for specific load recommendations.

### Q: How many fixings are included in a box, outer, and pallet?


The quantity of fixings included in a box, outer, and pallet are as follows:

- Box: 100 fixings
- Outer: 1600 fixings
- Pallet: 38400 fixings

[www.rawlplug.com](http://www.rawlplug.com)

---

## Documents / Resources

	<p><a href="#">RAWLPLUG FX-N-C-A2 Nylon Hammer In Fixing With Cylinder Head</a> [pdf] Installation Guide</p> <p>FX-N-C-A2 Nylon Hammer In Fixing With Cylinder Head, FX-N-C-A2, Nylon Hammer In Fixing With Cylinder Head, Fixing With Cylinder Head, Cylinder Head</p>
---	---

## References

- [🌐 Homepage - Rawlplug](#)
- [User Manual](#)