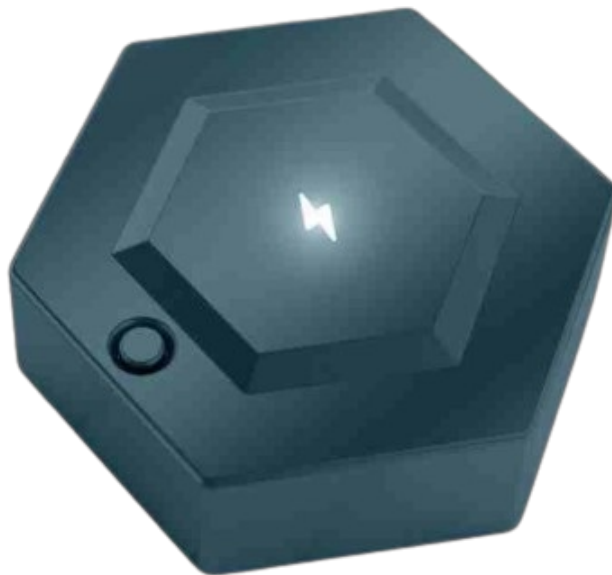


# Ravensburger Gravitrax Power Element Connect Interactive Track System User Manual

[Home](#) » [Ravensburger](#) » Ravensburger Gravitrax Power Element Connect Interactive Track System User Manual 

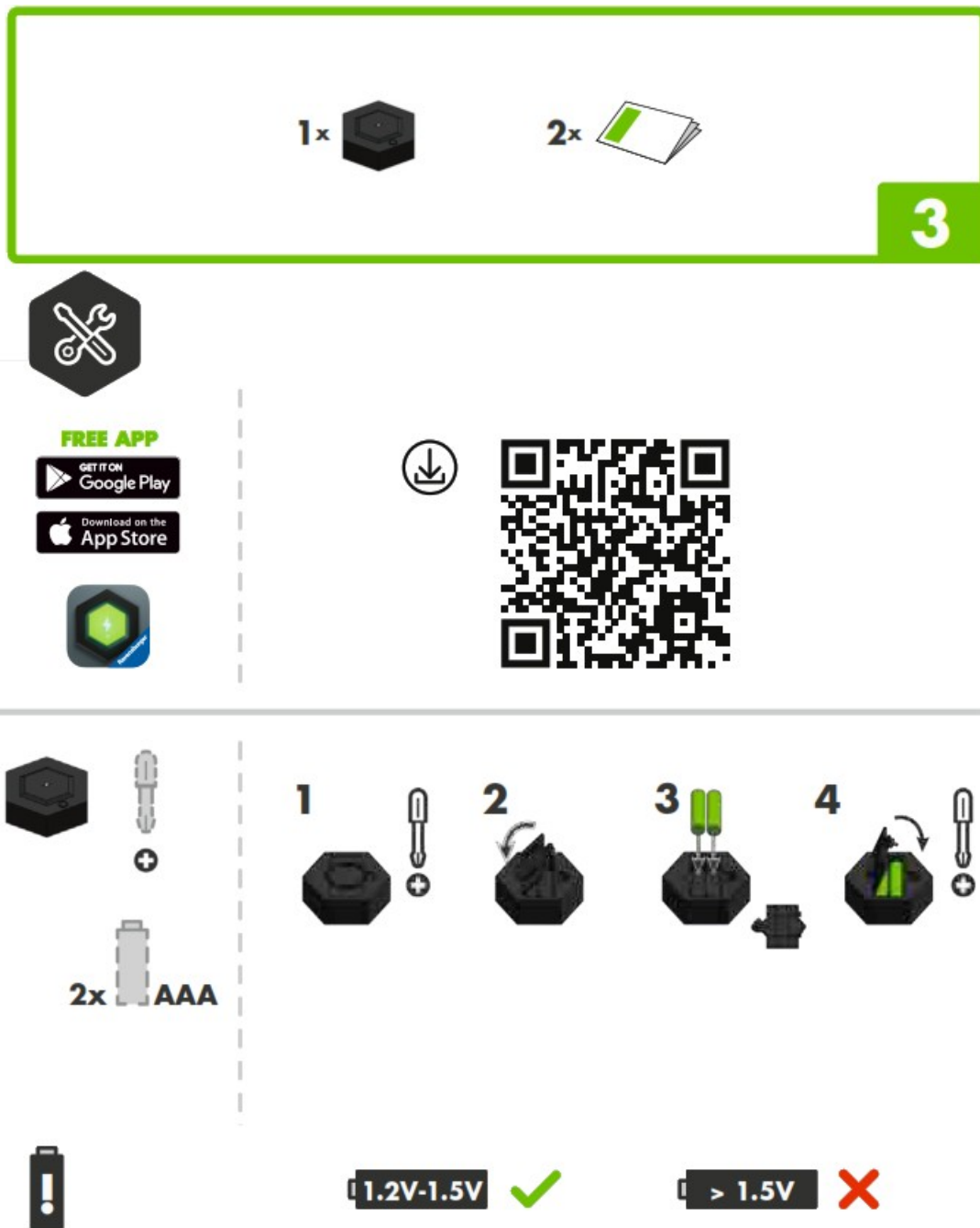


**ELEMENT \* | CONNECT**  
Ravensburger

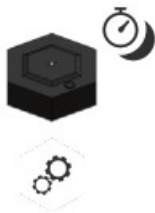
## Contents

- 1 Gravitrax Power Element Connect Interactive Track System
- 2 WARNINGS
- 3 Documents / Resources
  - 3.1 References
- 4 Related Posts

## Gravitrax Power Element Connect Interactive Track System



<https://gravitrax-power-hp.ravensburger.com/>





#GRAVITRAX



© 2023

Ravensburger Verlag GmbH · Postfach 24 60 · D-88194 Ravensburg Imported into the UK by Ravensburger Ltd.  
Units 3-5, Avonbury Business Park · Howes Lane · BICESTER · OX26 2UA · GB  
Ravensburger North America, Inc. · PO Box 22868 · Seattle WA 98122 · USA

[ravensburger.com](https://ravensburger.com)

## WARNINGS

FCC ID : 2A2XI589

ISED ID : 27849-589

Model Name: Connect



The “crossed-out dustbin” symbol (with horizontal line) indicates the separate collection of electrical and electronic equipment, and informs the owner that the device should not be disposed of with household waste at the end of its useful life. When disposing of old electrical equipment containing batteries, accumulators or lamps, these components must be removed beforehand. You can return the electrical components free of charge to your local retail outlet or nearest drop-off point for old electrical equipment. Addresses of suitable collection points can be obtained from your local council or municipal authority. We will only accept old electrical equipment larger than 25 cm if a new electrical appliance with the same essential functions is purchased. Old electrical equipment smaller than 25 cm can be returned at any time via our website (see “Returns”) – please note that returns are limited to three items per appliance type and customer. Please also remember to erase any personal data stored in your old equipment before returning it for disposal. The separate disposal of old electrical equipment is designed to enable proper recycling and avoid harm to the environment and human health. Further information can also be found in EU Directive 2012/19/EU.

To change the batteries, open the battery compartment with a suitable screwdriver.

Replace the spent batteries with new batteries of the same type, making sure you match up the poles correctly. Screw the battery compartment together again securely.

- Keep these instructions in a safe place; they contain important information!

- Non-rechargeable batteries must not be recharged!
- Rechargeable batteries may only be charged under adult supervision.
- Different types of batteries or new and used batteries are not to be mixed!
- Insert the batteries in the correct „+“ and „-“ positions.
- Remove the batteries when they are empty or if the unit is not going to be used for a long period of time.
- The supply terminals must not to be short-circuited.
- We recommend the use of alkaline batteries.
- Only use batteries of the same or similar type.
- Always replace all the batteries at the same time, not just singly.

To clean the device, please turn it off and remove the batteries. Wipe the surface with a dry or slightly damp cloth. Do not use chemical solvents. After the device is completely dry, the batteries can be put back in and the device can be used.

Recommendation for use: A minimum distance of 20 cm from the connect should be maintained if possible. This device complies with Part 15 of the FCC Rules. Operation is subject to the following two conditions: (1) this device may not cause harmful interference, and (2) this device must accept any interference received, including interference that may cause undesired operation.

**NOTE:** This equipment has been tested and found to comply with the limits for a Class B digital device, pursuant to Part 15 of the FCC Rules. These limits are designed to provide reasonable protection against harmful interference in a residential installation. This equipment generates, uses and can radiate radio frequency energy and, if not installed and used in accordance with the instructions, maybe cause harmful interference to radio communications. However, there is no guarantee that interference will not occur in a particular installation. If this equipment does cause harmful interference to radio or television reception, which can be determined by turning the equipment off and on, the user is encouraged to try to correct the interference by one or more of the following measures:

- Reorient or relocate the receiving antenna.
- Increase the separation between the equipment and receiver.
- Connect the equipment into an outlet on a circuit different form that to which the receiver is connected.
- Consult the dealer or an experienced radio/TV technician for help.

Changes or modifications not expressly approved by the party responsible for compliance could void the user's authority to operate the equipment.

This equipment complies with FCC radiation exposure limits set forth for an uncontrolled environment.

FCC ID : 2A2XI589

IC-Canada: CAN ICES-3(B)/NMB-3(B)

This device contains licence-exempt transmitter(s)/receiver(s) that comply with Innovation, Science and Economic Development Canada's licence-exempt RSS(s).

Operation is subject to the following two conditions :

1. This device may not cause interference.
2. This device must accept any interference, including interference that may cause undesired operation of the device.

This equipment complies with Innovation, Science and Economic Development Canada's radiation exposure limits set forth for an uncontrolled environment.


IC ID : 27849-589

Maximum radio frequency power (RF power): < 10 dBm

Frequency range: 2400-2483,5 MHz

We, Ravensburger Verlag GmbH, hereby confirm that this product complies with Directive 2014/53/EU. The complete declaration of conformity can be found on the following website: [www.ravensburger.de/DOC](http://www.ravensburger.de/DOC)

## Documents / Resources

	<p><a href="#">Ravensburger Gravitrax Power Element Connect Interactive Track System</a> [pdf] User Manual</p> <p>2A2XI589, 589, Gravitrax Power Interactive Track System, Gravitrax Power, Interactive Track System, Track System, Gravitrax Power Element Connect Interactive Track System, Gravitrax Power Element Connect, Element Connect Interactive Track System</p>
---	---

## References

-  [Ravensburger - Puzzles, Games and Crafts & Science](#)