

 **RAVEK**  
**2019 Apex Lights**  
**Polaris Ranger**



# RAVEK 2019 Apex Lights Polaris Ranger Instruction Manual

[Home](#) » [RAVEK](#) » RAVEK 2019 Apex Lights Polaris Ranger Instruction Manual 

## Contents

- [1 RAVEK 2019 Apex Lights Polaris Ranger](#)
- [2 TOOLS NEEDED](#)
- [3 PARTS INCLUDED](#)
- [4 INSTALL VIDEO TUTORIAL](#)
- [5 OPTION A – ROLL BAR MOUNTING](#)
- [6 INSTALL ROLL BAR ADAPTOR](#)
- [7 WIPE DOWN SURFACES](#)
- [8 PLUG IN THE APEX LIGHT](#)
- [9 SECURE WIRING](#)
- [10 Documents / Resources](#)
  - [10.1 References](#)
- [11 Related Posts](#)



**RAVEK 2019 Apex Lights Polaris Ranger**



## APEX LIGHTS – REAR RED

- Part #: 64-106
- Fitment: POLARIS RANGER 2019+

## TOOLS NEEDED

### OPTIONAL



*Side Cutter Pliers*



*3mm Allen Wrench*



*4mm Allen Wrench*



*Needle Nose Pliers*



*Lighter/Heat Gun*



*Ratchet*



*10mm Socket*



*11/32" drill bit\**



*1/4" drill bit\**



*Drill\**

## PARTS INCLUDED

- Apex Light (2x)
- Power Harness (2x)
- Extension Harness (2x)
- Roll Bar Adapter (2x)
- Strap (2x)
- Zip Tie (8x)
- Double Sided Tape (2x)
- Pulse Modulator (2x)
- Running Light Modulator (2x)

- Taillight Harness (2x)
- M6 Flat Washer (2x)
- M5 x 0.8 x 6mm Allen Screw (4x)
- M6 x 1.0 x 10mm Allen Screw (2x)
- Adhesive Promoter Wipe (2x)
- Rubbing Alcohol Wipe (2x)
- Dielectric Grease (1x)
- Heat Shrink (1x)

## INSTALL VIDEO TUTORIAL

DON'T LIKE INSTRUCTIONS? VISIT OUR WEBSITE TO ACCESS THE VIDEO TUTORIAL.

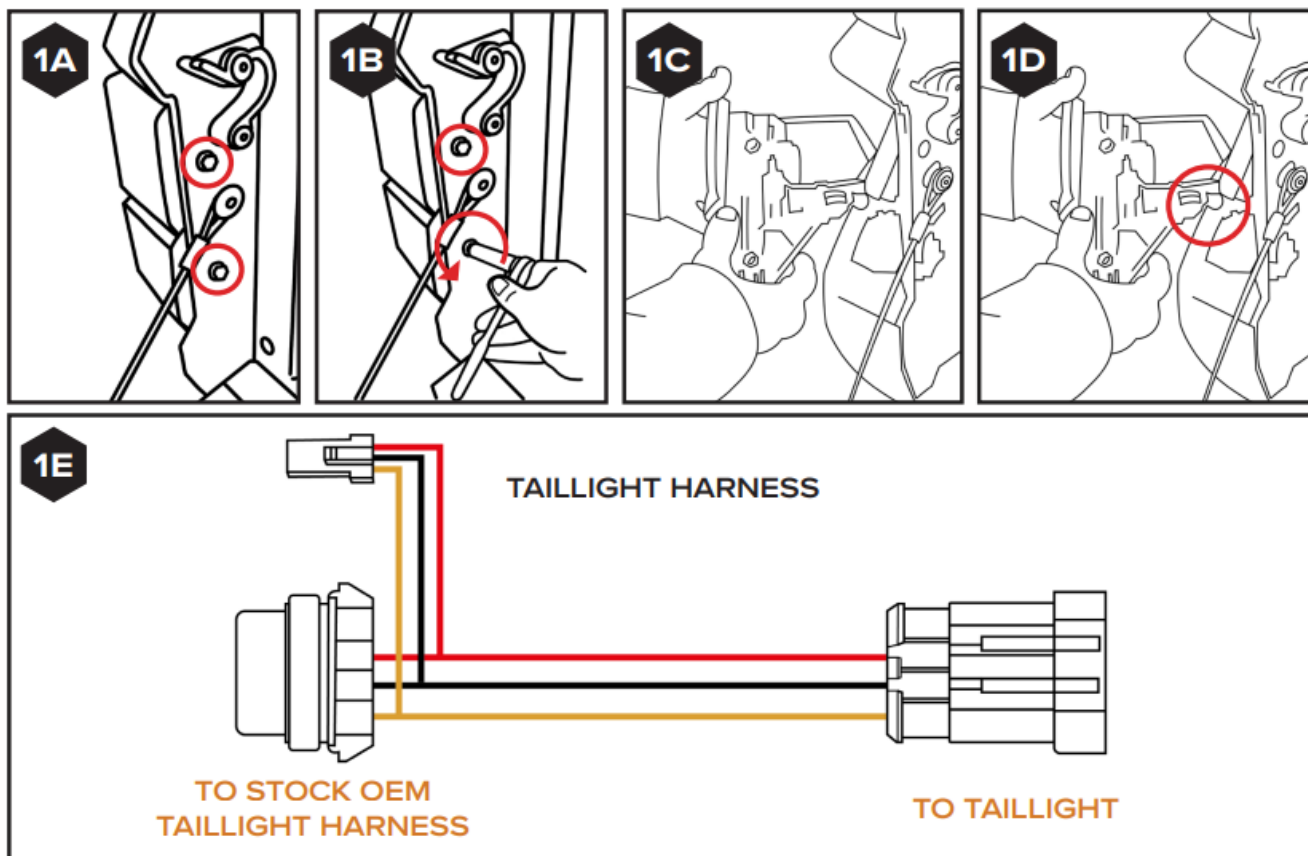


**NOTE:** Dielectric grease is provided in each kit. We've engineered sealed connectors but we still recommend applying a small dab of dielectric grease on each connection point for added protection.

**NOTE:** Make sure your vehicle is off and key is out of the ignition before starting.

## UNPLUG TAILLIGHT

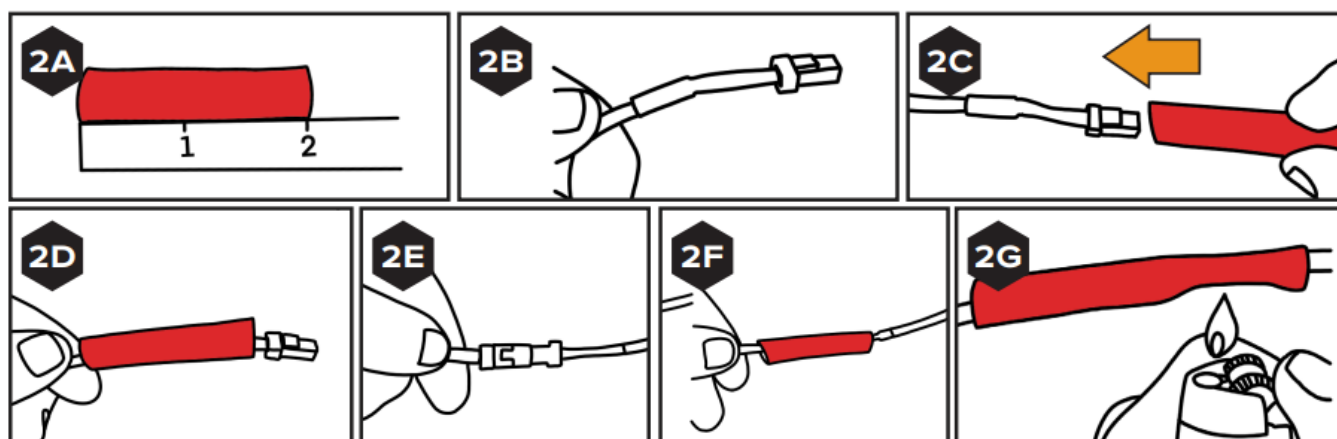
- Starting from the left side open the tailgate and remove the taillight using a RATCHET and 10MM SOCKET. Unplug the OEM connector from your Ranger taillight and plug the taillight harness provided in-line [SEE FIGURES 1A – 1E]



## HEAT SHRINK YOUR CONNECTIONS AND EXTRA CONNECTORS

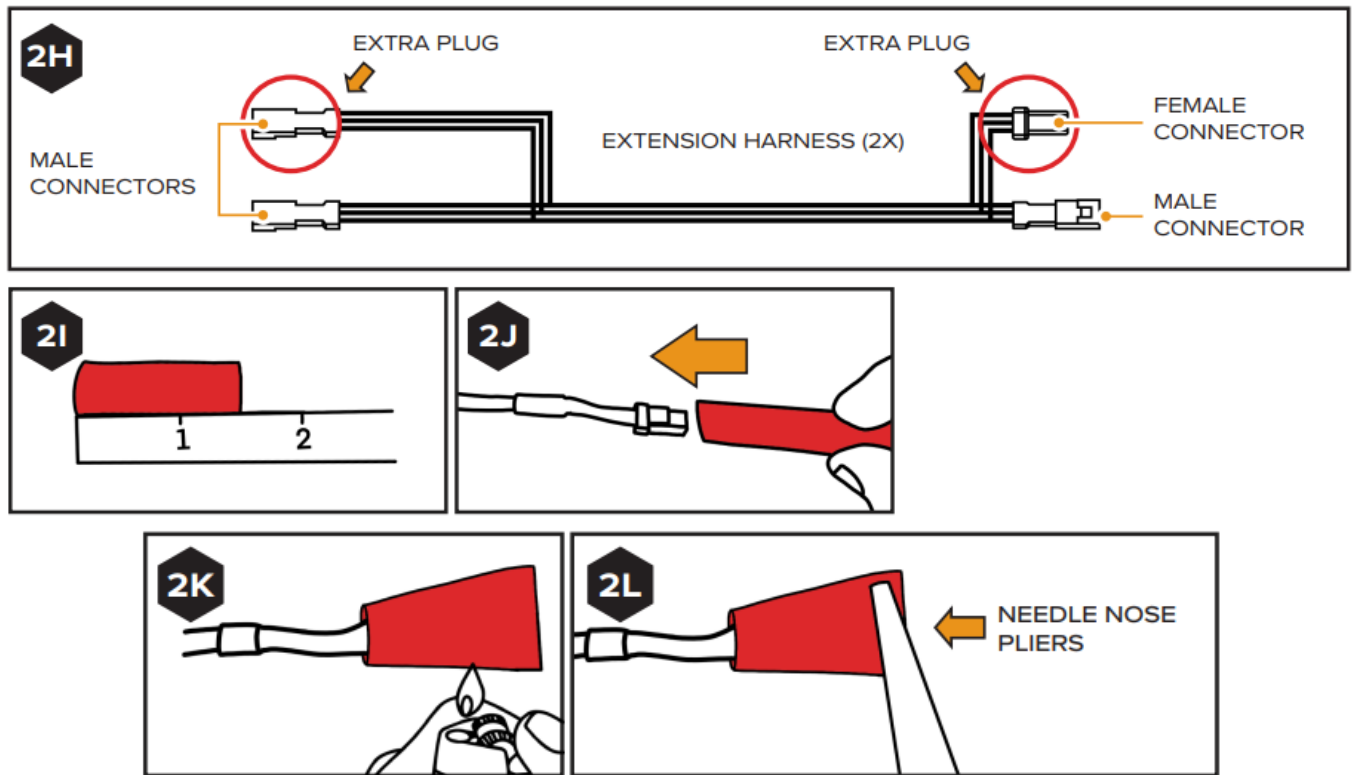
As you make plug & play connections, use the heat shrink tubing, provided to protect your connections from dirt on the trails. Go over the connection points you make and cut 2" of heat shrink for each. Use a lighter or heat gun to shrink the tubing. [SEE FIGURES 2A – 2G]

## HEAT SHRINK CONNECTIONS



For the unused extension harness connectors (mentioned in the next step) cut 1.5" piece of heat shrink tubing, slide it over the connector and heat shrink it using a lighter or heat gun. Use needle nose pliers to pinch the end of the extra heat shrink. This will act as a cap to protect the connectors from getting dirt inside. [SEE FIGURES 2H – 2L]

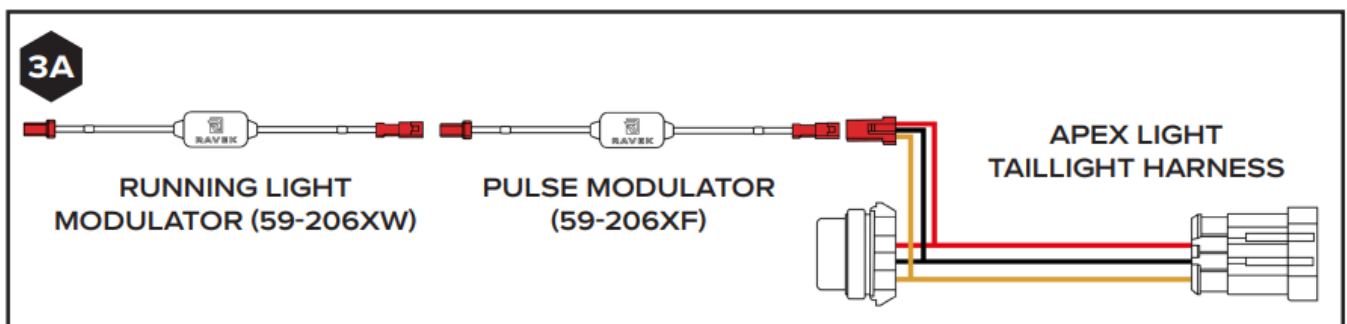
## HEAT SHRINK EXTRA PLUGS



### PLUG-IN PULSE MODULATOR & RUN THE LIGHT MODULATOR

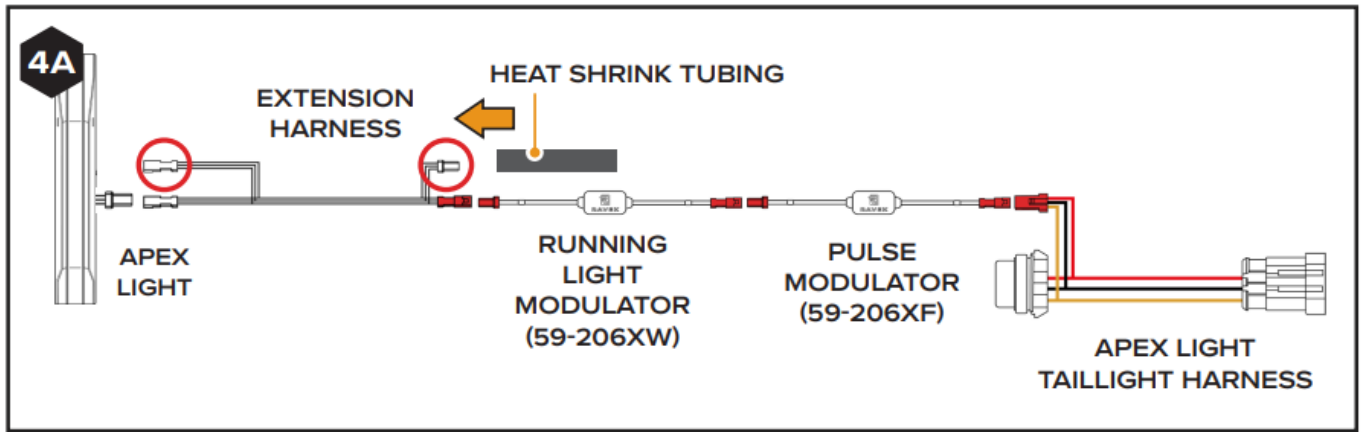
Plug in your running light modulator to your pulse modulator and plug your pulse modulator to the Apex Light taillight harness. [SEE FIGURE 3A] **NOTE:** Easily identify the pulse modulator and running light modulator by the part number on the backside of each one. [SEE FIGURE 3A]

**Note:** If your UTV has a Non-RAVEK turn signal kit already installed, skip this step and do not install the RAVEK pulse modulator. This will ensure no compatibility issues.



### PLUG IN THE EXTENSION HARNESS

Plug in your extension harness to the running light modulator. [SEE FIGURES 4A] **NOTE:** Extension harnesses supplied come with extra connectors to easily add more Apex Lights, as seen in the circled connectors in FIGURE 4A.



## SELECT LOCATIONS FOR APEX LIGHTS

Your options include:

- Exterior Body Panel  
Any exterior panel with 8" of flat surface for mounting
- Roof Mounting
- Roll Bar/Bumper Mounting

Check out the video to the right (see QR code) for a 50-second walkthrough of the different Apex Light mounting options.



## ROUTE WIRING

With your extension harness plugged into the taillight harness, choose your mounting location on the Ranger. Route your extension harness from the brake light to your mounting location.

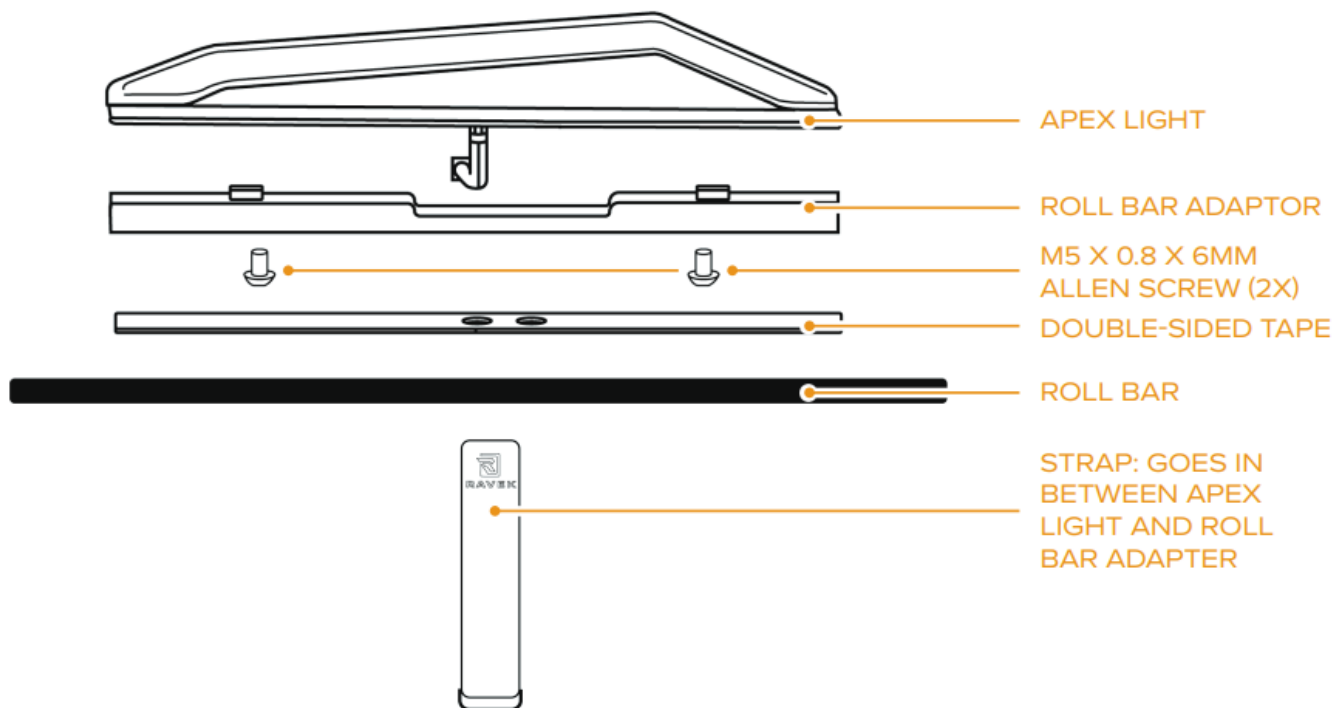
NOTE: We suggest you leave slack in wires until the end of installation when wires can be secured with wire ties provided. Route all wiring away from moving or hot components.

## READY TO MOUNT APEX LIGHT

Once you have routed your extension harness you are now ready to mount your Apex Lights. If you have chosen to mount your Apex Lights to a roll bar or bumper, you will follow the Roll Bar mounting steps detailed in step 7A. If you have decided to mount your Apex Lights to either an exterior panel or to your roof, you now have to decide whether you want to mount your Apex Lights via:

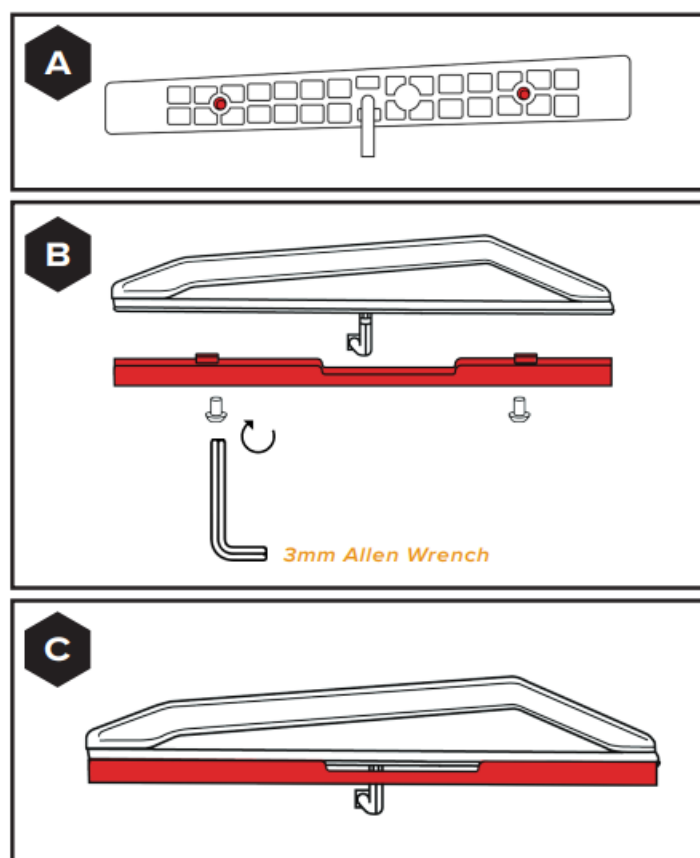
- a) Adhesive mount (i.e. no drill) → follow step 7B
- b) Drill-mount for increased security → follow step 7C

## OPTION A – ROLL BAR MOUNTING



## INSTALL ROLL BAR ADAPTOR

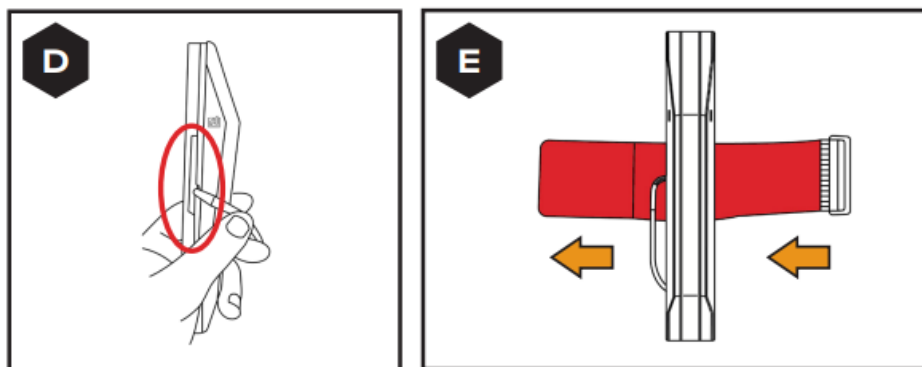
Install the roll bar adaptor to the base of the light by using two of the M5 x 0.8 x 6mm Allen Screws with a 3MM ALLEN WRENCH. [SEE FIGURES A – C] **NOTE:** Select which side you would like your wire to exit the light that allows you to best hide your wires.



## INSTALL STRAP

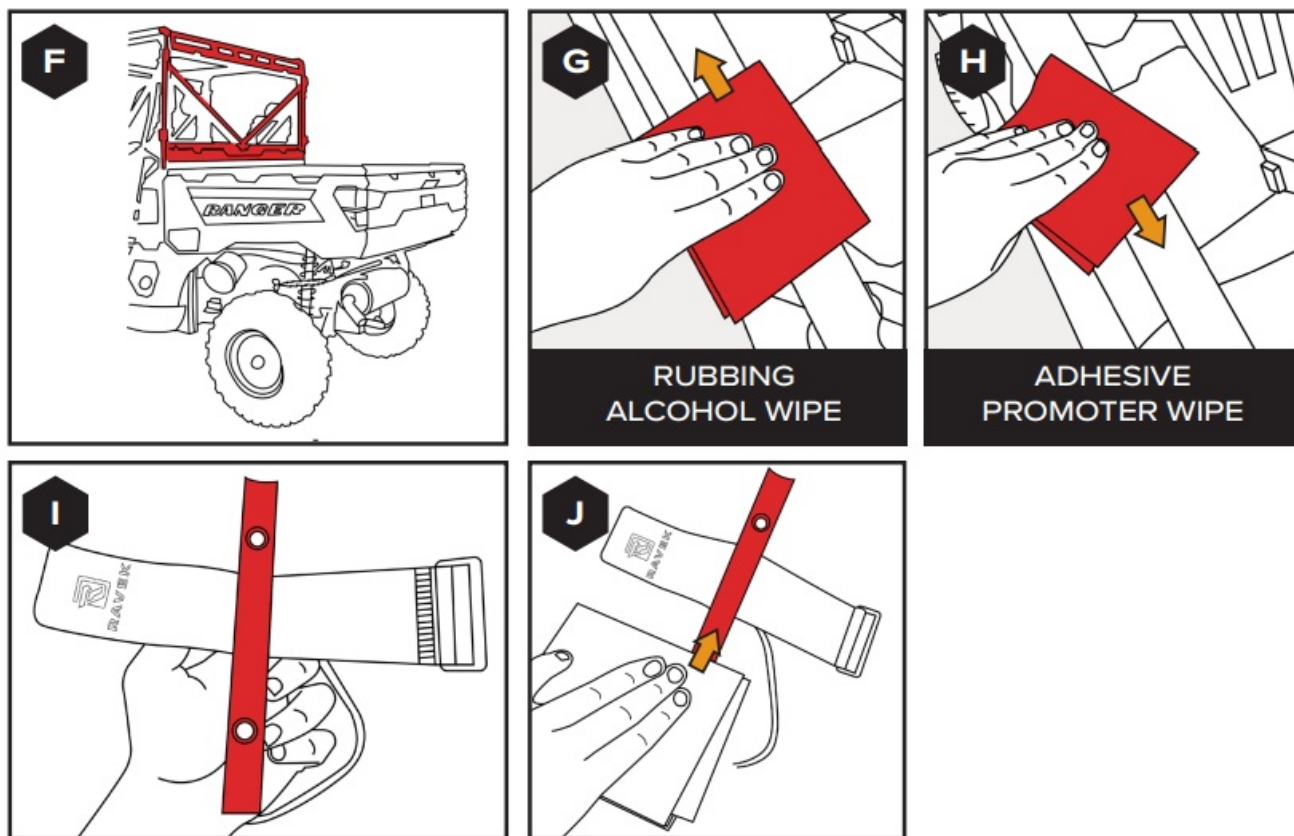
Once the roll bar adaptor is secured to the light, install the strap provided through the opening between the light

base and the roll bar adapter. [SEE FIGURES D & E]



## WIPE DOWN SURFACES

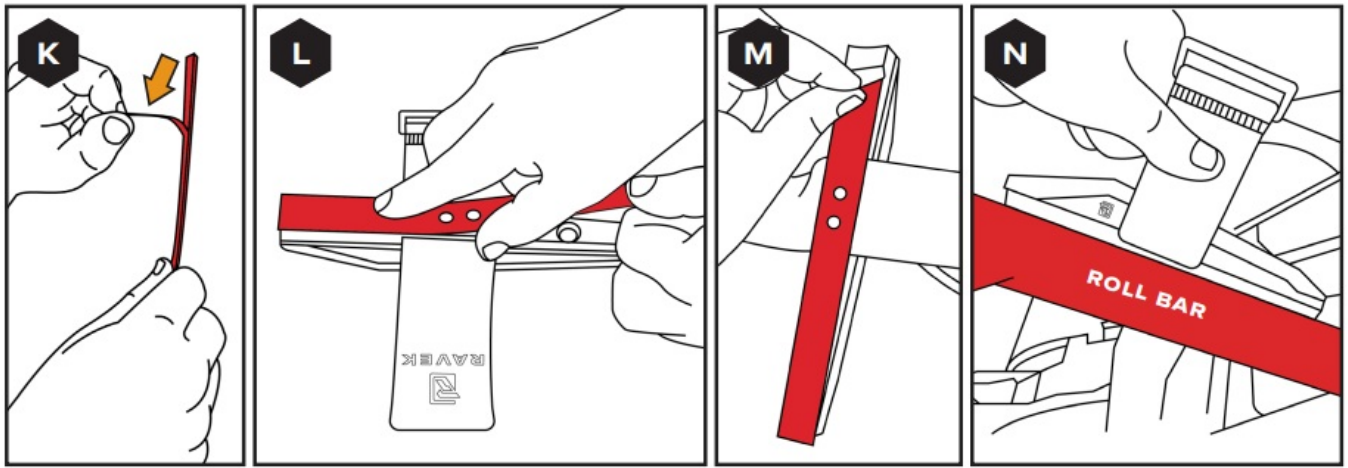
Before you permanently install your Apex Light to the UTV's roll bar you've chosen, wipe down the roll bar and the base of the light with the rubbing alcohol wipe provided and let dry. Next wipe down the roll bar and light base with the adhesion promoter wipe provided. Let dry. [SEE FIGURES F – J]



## APPLY TAPE

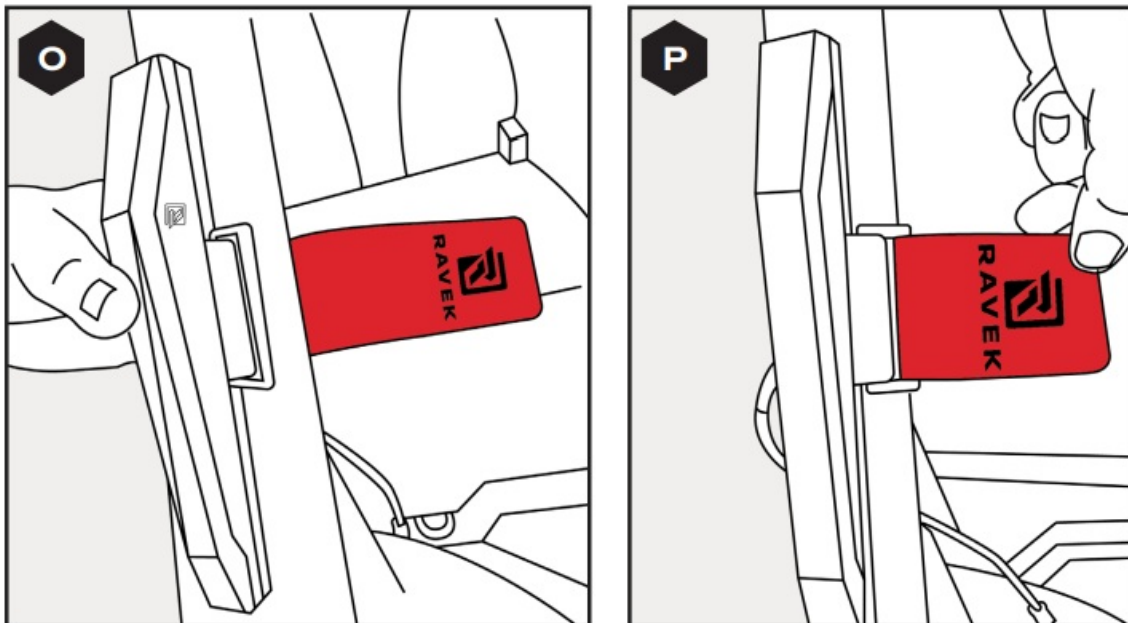
Apply the double-sided tape to the dry Apex Light's roll bar adapter, and attach the light to the surface you cleaned and prepared in the prior step. [SEE FIGURES K – N]



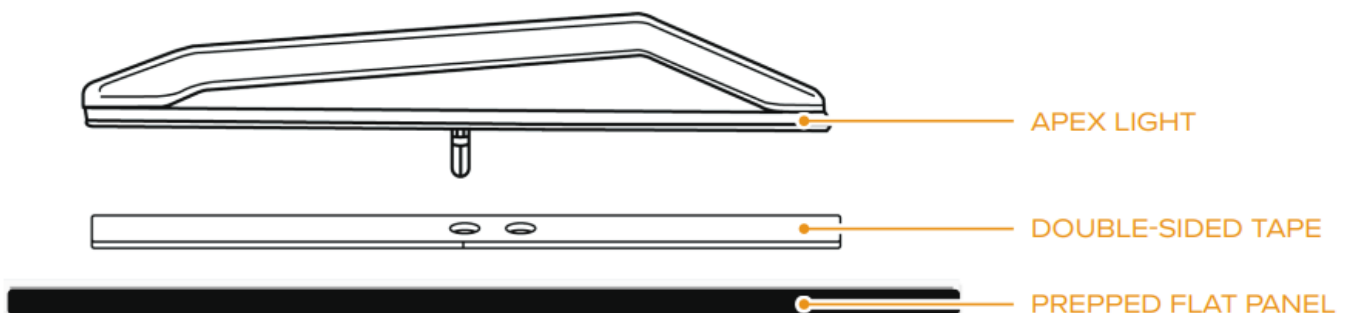


## TIGHTEN STRAP

Tighten straps onto base and roll bar. [SEE FIGURES O & P] **NOTE:** If you have excess length of strap you can rotate the buckle away from the slack to reduce the slack in the strap.

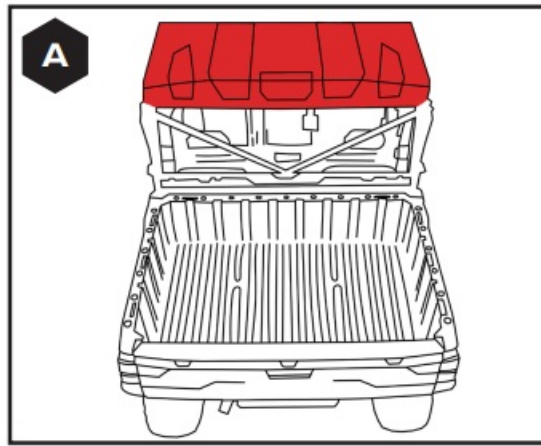


## OPTION B – ADHESIVE ONLY MOUNTING



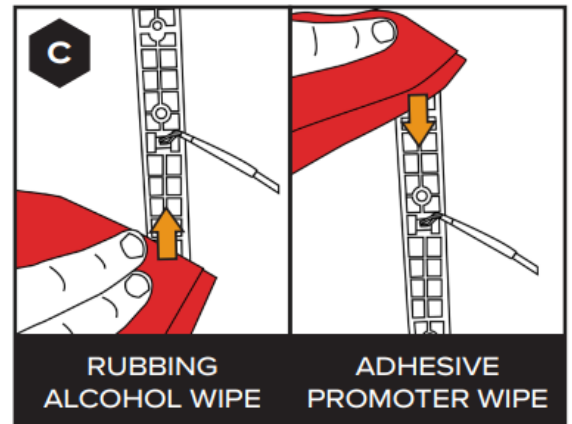
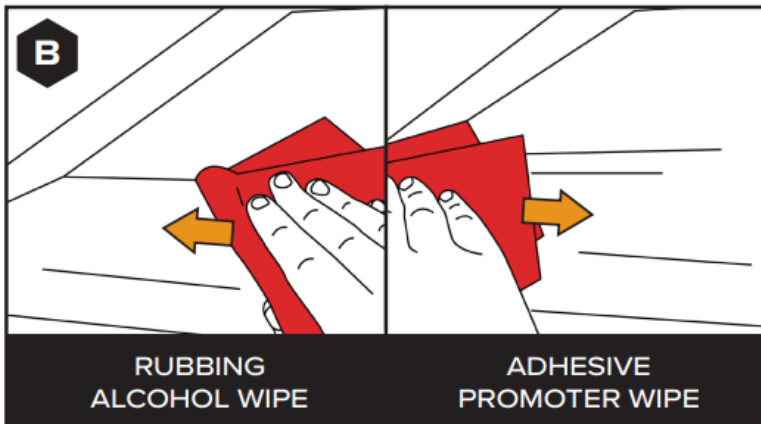
## LOCATE A SURFACE TO MOUNT TO

Locate an exterior panel with 8" of flat surface for mounting. [SEE FIGURE A] **NOTE:** If you're adhesive mounting the Apex Lights to the roof, we recommend drilling a hole to feed the wires through. The Apex Light adhesive creates a water-tight seal.



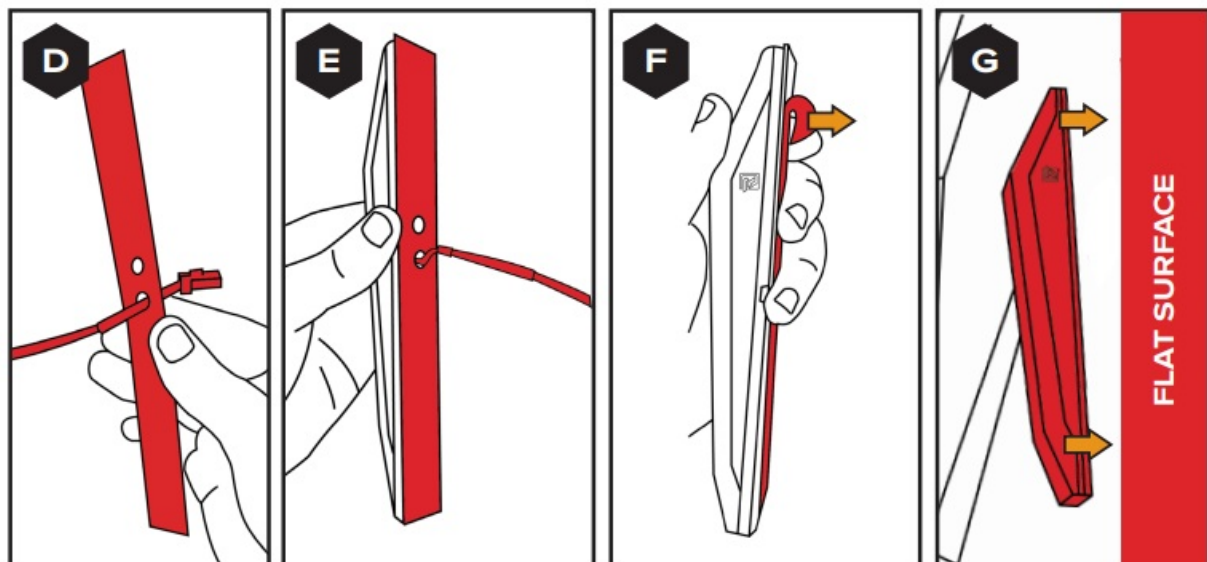
## WIPE DOWN SURFACES

Before you permanently install your Apex Light to the UTV's flat panel you've chosen, wipe down the panel and the base of the light with the rubbing alcohol wipe provided and let dry. Next wipe down the panel and light base with the adhesion promoter wipe provided. Let dry. [SEE FIGURES B & C]



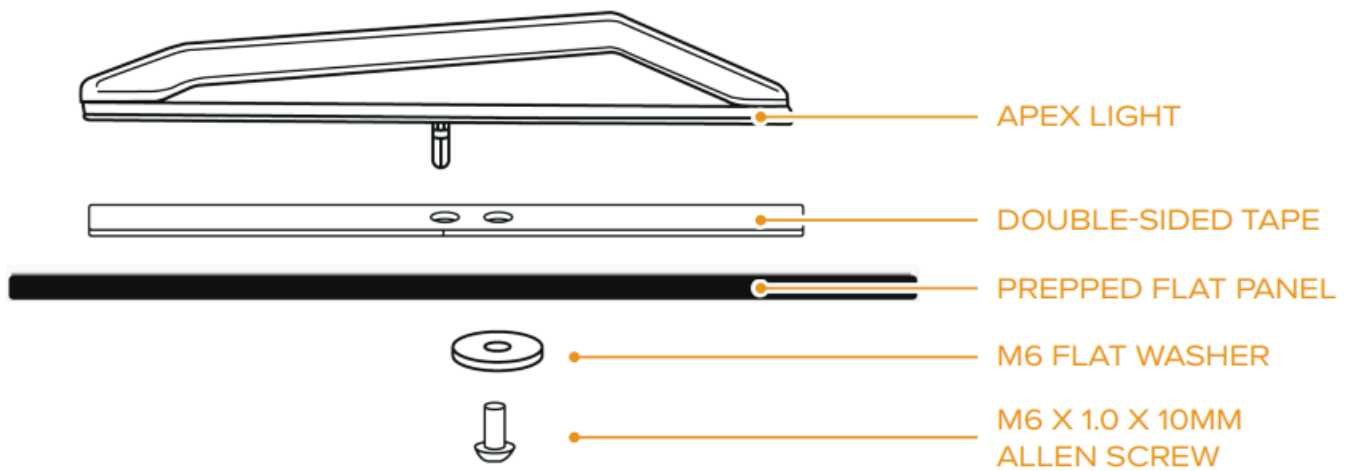
## APPLY TAPE

Apply the double-sided tape to the Apex Light's base and affix the light to the prepped surface. [SEE FIGURES D – G] **NOTE:** Be sure the whole light's base is in contact with the surface of the UTV to ensure the light will hold up permanently.



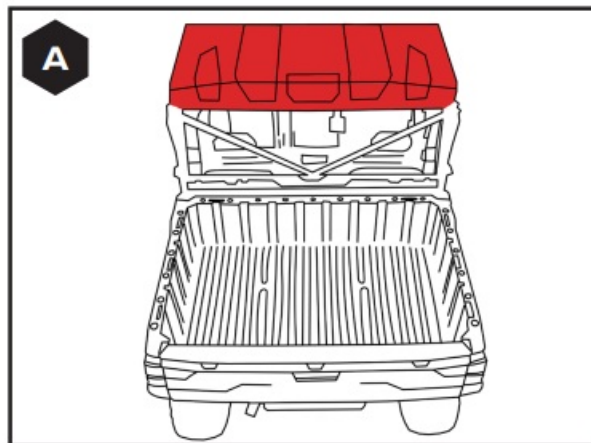
JUMP TO STEPS 8-11 TO FINISH INSTALL

### OPTION C – DRILLED AND ADHESIVE MOUNTING



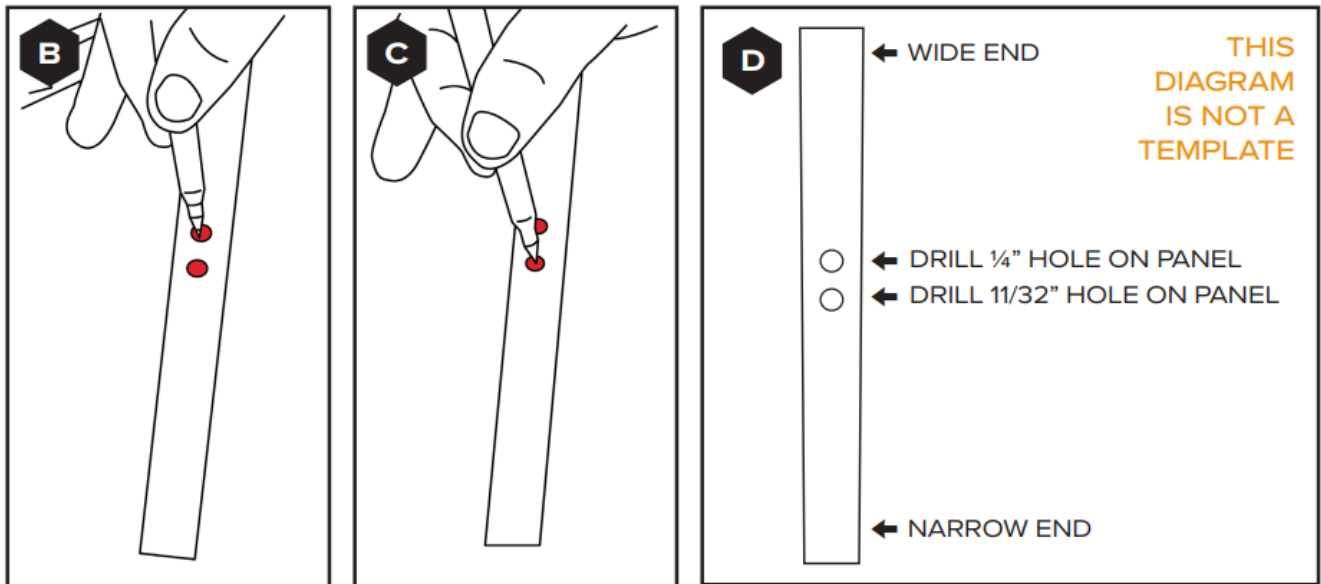
### LOCATE A SURFACE TO MOUNT TO

Locate an exterior panel with 8" of flat surface for mounting. [SEE FIGURE A]



### MARK HOLES TO DRILL

Use the double-sided tape holes as a template for the drilling locations. Confirm you can access the inside of the panel that you'll need to be able to access this area with your flat washer. [SEE FIGURES B – D]



### DRILL 1/4" HOLE

Once you have your holes marked, drill a 1/4" hole that will be used to feed the screw through.

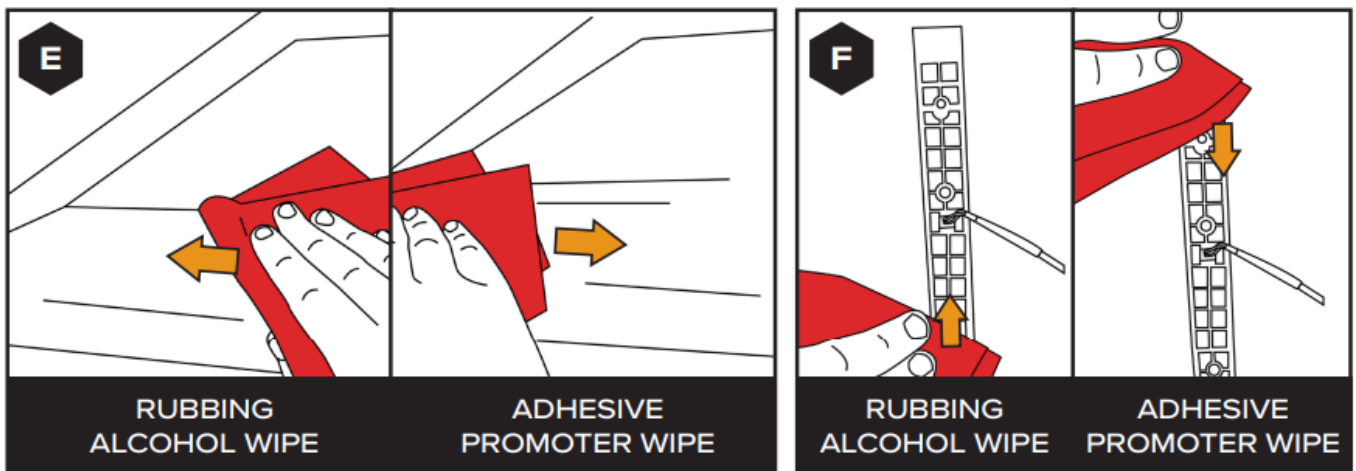
**NOTE:** We recommend using a brad point drill bit to avoid damaging your panel.

### DRILL 11/32" HOLE

Drill a 11/32" hole that you will feed the Apex Light's wire connector through.

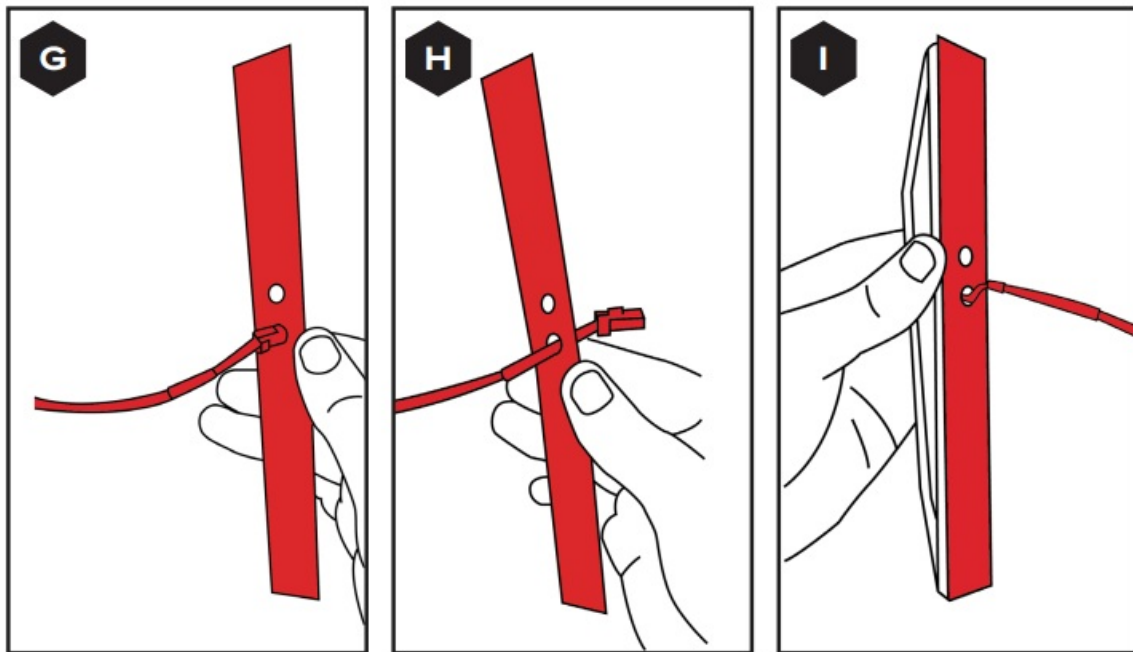
### WIPE SURFACE WITH RUBBING ALCOHOL

Before you permanently install your Apex Light to the UTV's flat panel you've chosen, wipe down the panel and the base of the light with the rubbing alcohol wipe provided and let dry. Next wipe down the panel and light base with the adhesion promoter wipe provided. Let dry. [SEE FIGURES E & F]



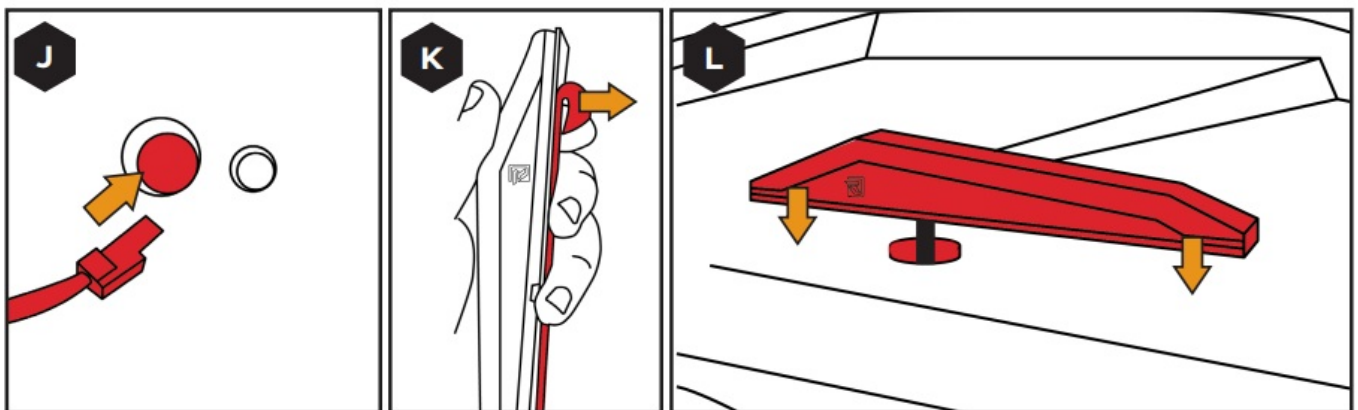
### APPLY TAPE

Apply the double-sided tape to the Apex Light's base. [SEE FIGURES G – I]



### ADHERE LIGHT TO PREPPED SURFACE

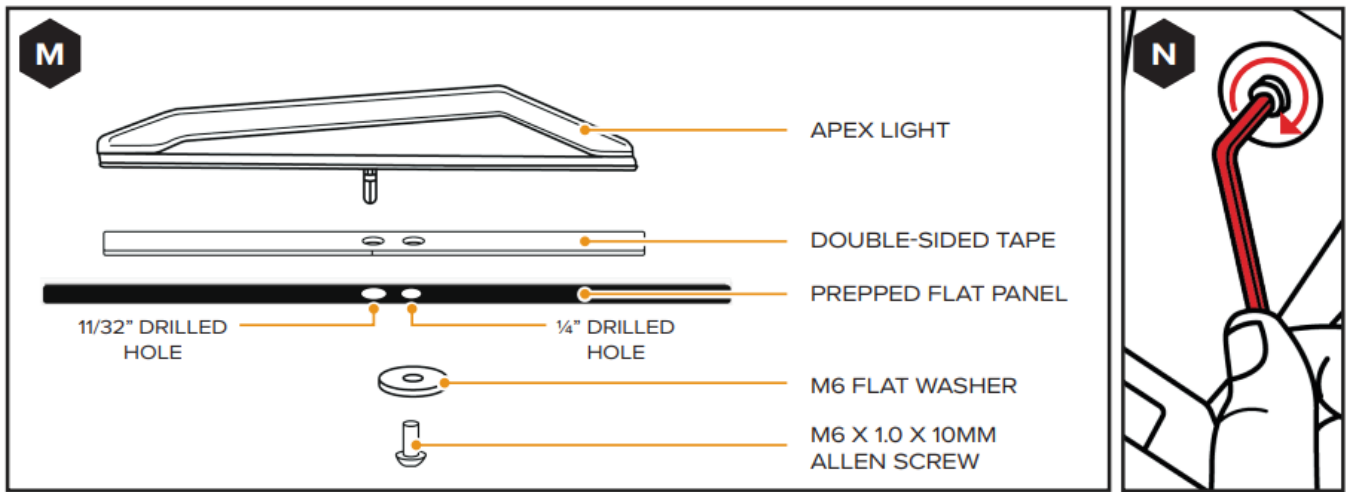
Feed your light's wiring through the 11/32" hole. Peel away the double-sided tape cover, and stick the Apex Light to the prepped surface. [SEE FIGURES J – L]



### THREAD IN SCREW

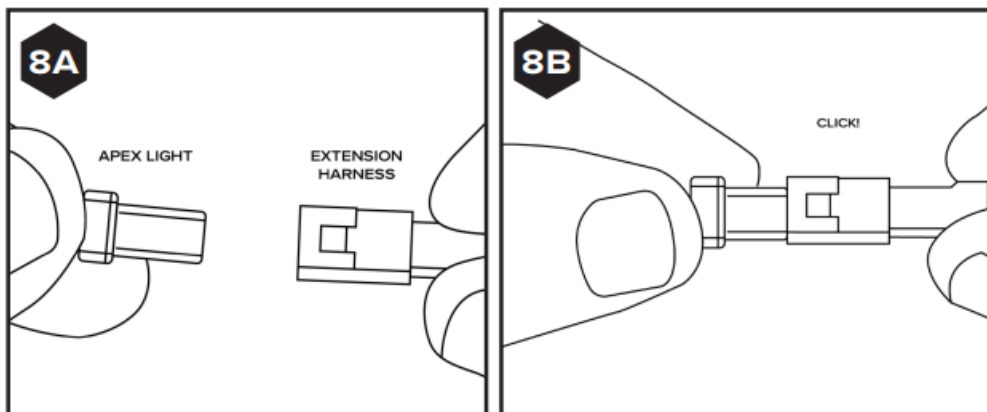
Thread your M6 x 1.0 x 10mm Socket Allen Screw with an M6 Flat Washer through the backside of the panel into the light's base using a 4MM ALLEN WRENCH. [SEE FIGURES M & N] **NOTE: If a longer screw is required, you have two options:**

1. Give us a call or email, and we will express mail you a screw of the length you need.
2. Go to your local hardware store and purchase a M6 x 1.0 x (your desired length).



## PLUG IN THE APEX LIGHT

Plug your Apex Light into the extension harness. [SEE FIGURES 8A & 8B] NOTE: Remember to heat shrink all your connection points as seen in step 2.



## REPEAT STEPS 1 TO 8

- Repeat step 1 through 8 on the right side of the Ranger to install your other Apex Light.

## LET THE ADHESIVE CURE

- Let adhesive tape cure for 24 hours before riding.

## SECURE WIRING

Once you have both of your Apex Lights mounted, go through and secure all the wiring using the zip ties provided.

**NOTE:** Secure wiring away from hot or moving components.

**NOTE:** Remember to heat shrink all your connection points as seen in step 2.

## WHY RAVEK

Stock UTVs don't come with enough storage, lighting, comfort, and protection. That's why we started RAVEK. We live to design, manufacture, and test innovative SxS upgrades that elevate the riding experience. Here's what you can expect from us:

- Durable products built to last (100% lifetime guarantee)
- UTV upgrades are thoughtfully designed & tested by riders
- Outstanding installation support (videos & USA customer service)
- The constant flow of epic riding content (check out our social media)

We're confident your RAVEK product will earn its place on your machine. Please call or e-mail us if we can help.


- Harry & Ricky (Brothers & Owners)

### MESSAGE FROM THE DESIGNER

Has anyone ever noticed how there are far fewer light options for the rear of these vehicles than the front? The contours of the Apex Lights in red just pop to me. Not only are you adding the safety of more rearward facing taillights, but they also inevitably make anything look badass, am I right?



### Documents / Resources

	<p><a href="#">RAVEK 2019 Apex Lights Polaris Ranger</a> [pdf] Instruction Manual</p> <p>2019 Apex Lights Polaris Ranger, 2019, Apex Lights Polaris Ranger, Lights Polaris Ranger, Polaris Ranger, Ranger</p>
---	---

### References

- [User Manual](#)

#### Manuals+ Privacy Policy

This website is an independent publication and is neither affiliated with nor endorsed by any of the trademark owners. The "Bluetooth®" word mark and logos are registered trademarks owned by Bluetooth SIG, Inc. The "Wi-Fi®" word mark and logos are registered trademarks owned by the Wi-Fi Alliance. Any use of these marks on this website does not imply any affiliation with or endorsement.