



2017-2023 Polaris  
RZR XP Apex Light



# RAVEK 2017-2023 Polaris RZR XP Apex Light Instruction Manual

[Home](#) » [RAVEK](#) » RAVEK 2017-2023 Polaris RZR XP Apex Light Instruction Manual 

## Contents

- 1 [RAVEK 2017-2023 Polaris RZR XP Apex Light](#)
- 2 [PARTS INCLUDED](#)
- 3 [HEAT SHRINK CONNECTIONS](#)
- 4 [PLUG-IN PULSE MODULATOR](#)
- 5 [INSTALL ROLL BAR ADAPTOR](#)
- 6 [CONTINUATION STEPS 8-11](#)
- 7 [WHY RAVEK](#)
- 8 [Documents / Resources](#)
  - 8.1 [References](#)



**RAVEK 2017-2023 Polaris RZR XP Apex Light**



## APEX LIGHTS – REAR RED

- POLARIS RZR XP 2017-2023
- Part #: 64-305
- Fitment: POLARIS RZR XP 2017-2023

## TOOLS NEEDED: \*OPTIONAL



*Side Cutter Pliers*



*3mm Allen Wrench*



*4mm Allen Wrench*



*Needle Nose Pliers*



*Lighter / Heat Gun*



*11/32" drill bit\**



*1/4" drill bit\**



*Drill\**

## PARTS INCLUDED

- Apex Light (2x)
- Power Harness (2x)
- Extension Harness (2x)
- Roll Bar Adapter (2x)
- Strap (2x)
- Zip Tie (8x)

- Double Sided Tape (2x)
- Pulse Modulator (2x)
- Taillight Harness (2x)
- M6 Flat Washer (2x)
- M5 x 0.8 x 6mm Allen Screw (4x)
- M6 x 1.0 x 10mm Allen Screw (2x)
- Adhesive Promoter Wipe (2x)
- Rubbing Alcohol Wipe (2x)
- Dielectric Grease (1x)
- Heat Shrink (1x)

## INSTALL VIDEO TUTORIAL

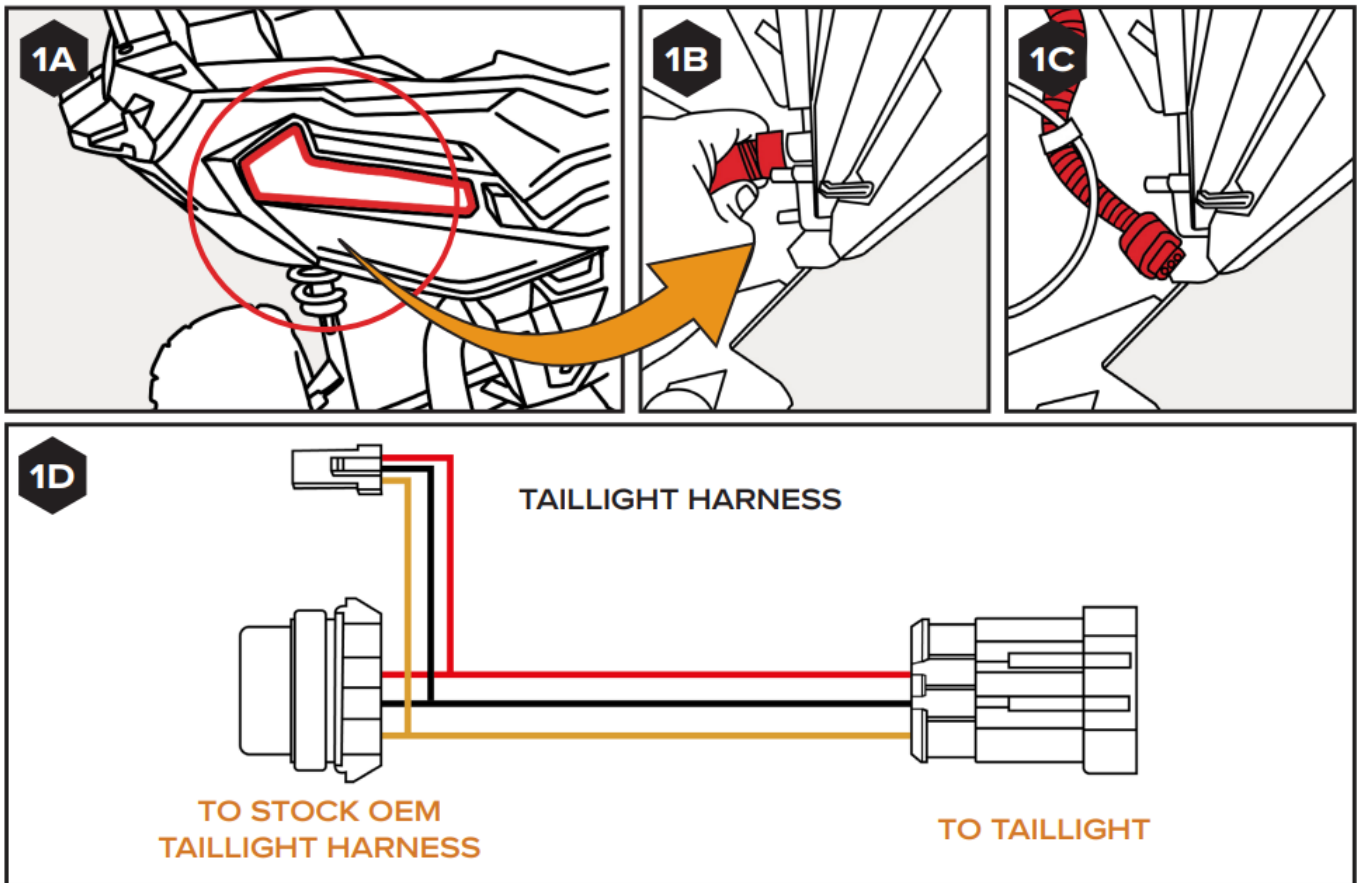


## DON'T LIKE INSTRUCTIONS? CHECK OUT OUR RZR XP VIDEO TUTORIAL.

- **NOTE:** Dielectric grease is provided in each kit. We've engineered sealed connectors but we still recommend applying a small dab of dielectric grease on each connection point for added protection.
- **NOTE:** Make sure your vehicle is off and the key is out of the ignition before starting.

## UNPLUG TAILLIGHT

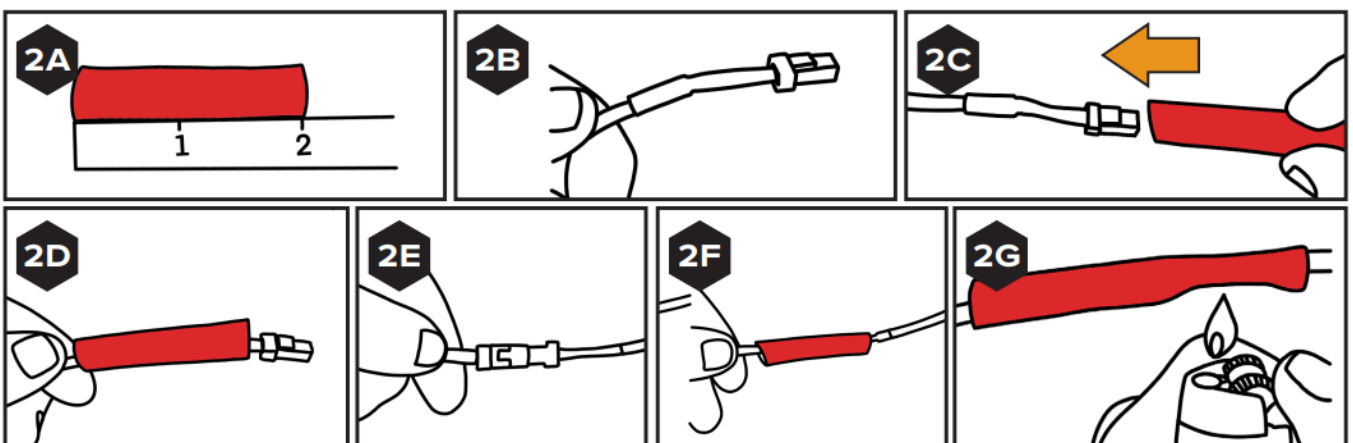
Starting from the left side, unplug the OEM connector from your RZR's taillight. Next, plug the Apex Light taillight harness provided in-line. [SEE FIGURES 1A – 1D]



#### HEAT SHRINK YOUR CONNECTIONS AND EXTRA CONNECTORS

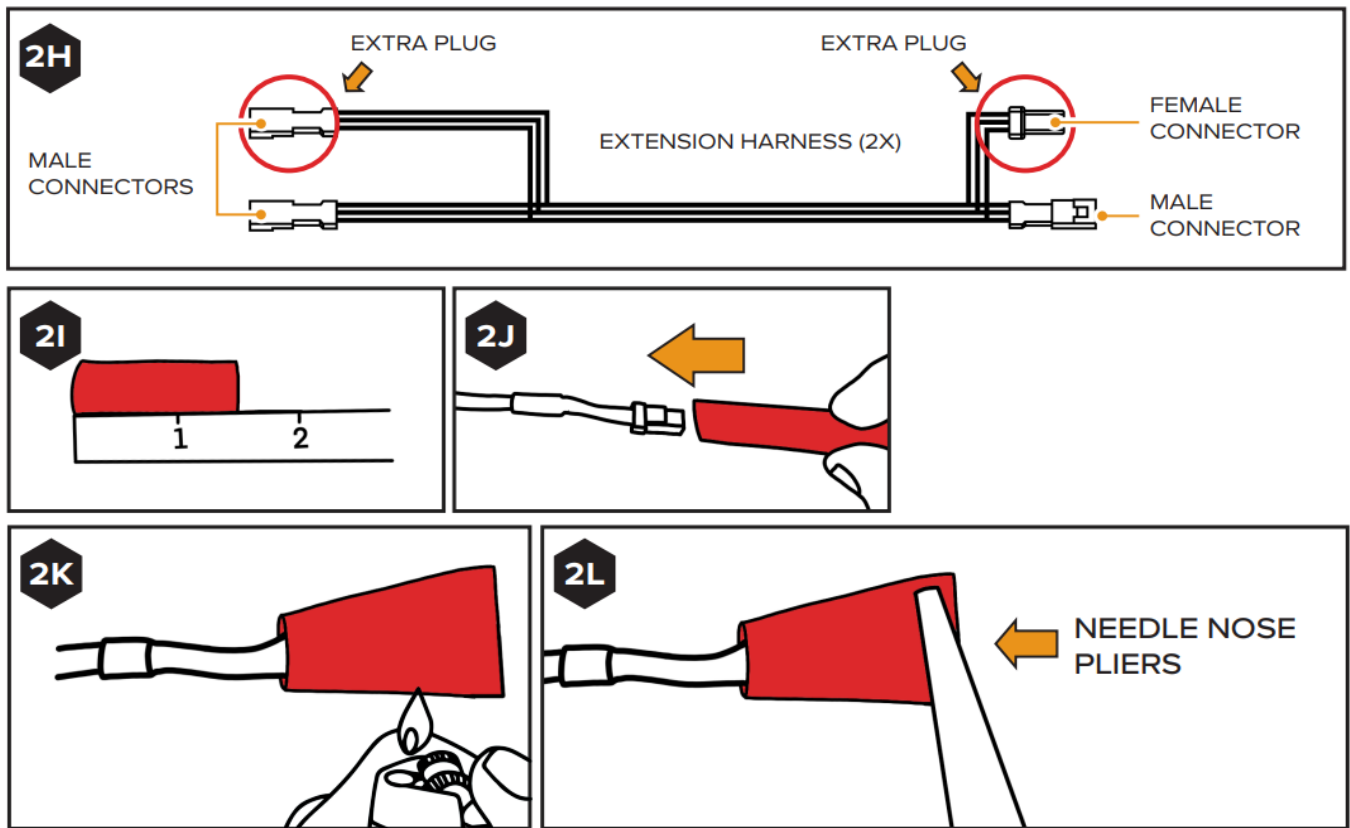
- As you make plug & play connections, use the heat shrink tubing, provided to protect your connections from dirt on the trails.
- Go over the connection points you make and cut 2" of heat shrink for each. Use a lighter or heat gun to shrink the tubing. [SEE FIGURES 2A – 2G]

#### HEAT SHRINK CONNECTIONS



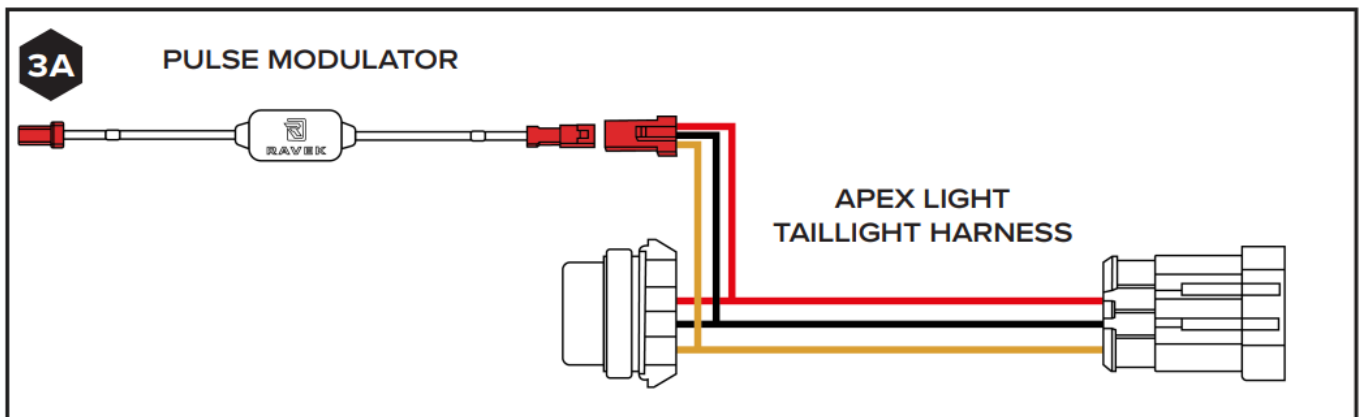
For the unused extension harness connectors (mentioned in the next step) cut a 1.5" piece of heat shrink tubing, slide it over the connector and heat shrink it using a lighter or heat gun. Use needle nose pliers to pinch the end of the extra heat shrink. This will act as a cap to protect the connectors from getting dirt inside. [SEE FIGURES 2H – 2L]

#### HEAT SHRINK EXTRA PLUGS



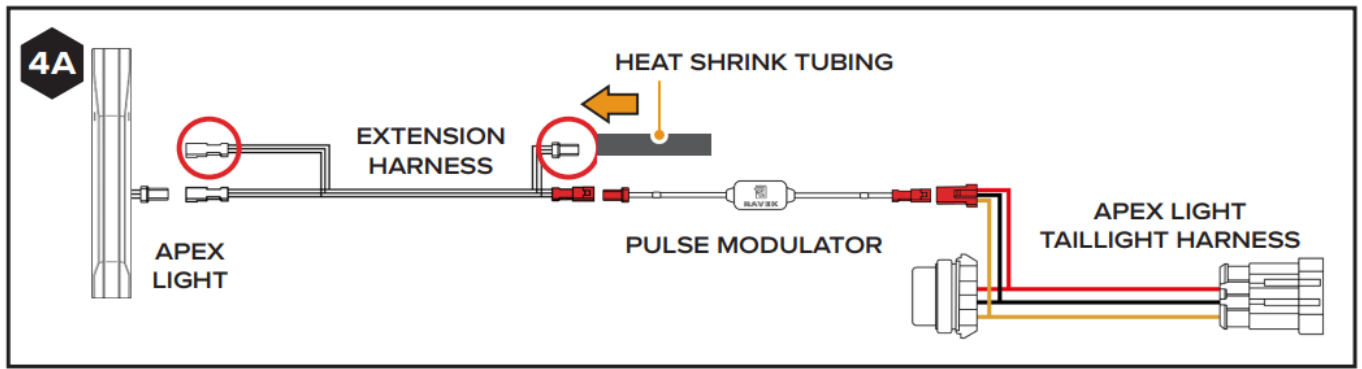
## PLUG-IN PULSE MODULATOR

- Plug in your pulse modulator to the Apex Light taillight harness. [SEE FIGURE 3A]



## PLUG IN THE EXTENSION HARNESS

Plug in your extension harness to the pulse modulator. [SEE FIGURES 4A] NOTE: Extension harnesses supplied come with extra connectors to easily add more Apex Lights, as seen in the circled connectors in FIGURE 4A.



## SELECT LOCATIONS FOR APEX LIGHTS

Your options include:

- Exterior Body Panel
- Any exterior panel with 8" of flat surface for mounting
- Roof Mounting
- Roll Bar/Bumper Mounting

Check out the video to the right (see QR code) for a 50-second walkthrough of the different Apex Light mounting options.



## ROUTE WIRING

- With your extension harness plugged into the taillight harness, choose your mounting location on the RZR. Route your extension harness from the brake light to your mounting location.
- NOTE: We suggest you leave slack in wires until the end of the installation when wires can be secured with wire ties provided. Route all wiring away from moving or hot components.

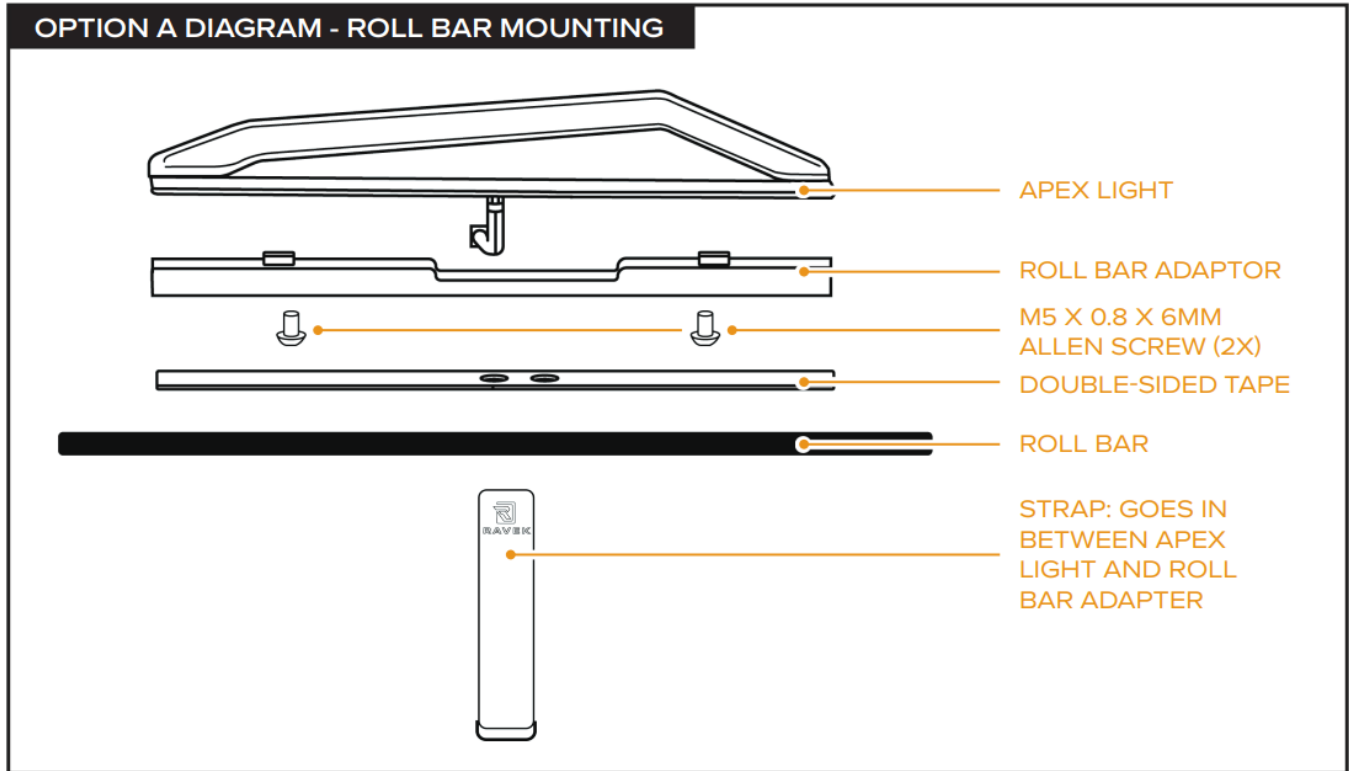
## READY TO MOUNT APEX LIGHT

Once you have routed your extension harness you are now ready to mount your Apex Lights. If you have chosen to mount your Apex Lights to a roll bar or bumper, you will follow the Roll Bar mounting steps detailed in step 7A. If you have decided to mount your Apex Lights to either an exterior panel or to your roof, you now have to decide whether you want to mount your Apex Lights via:

- Adhesive mount (i.e. no drill) → follow step 7B
- Drill-mount for increased security → follow step 7C

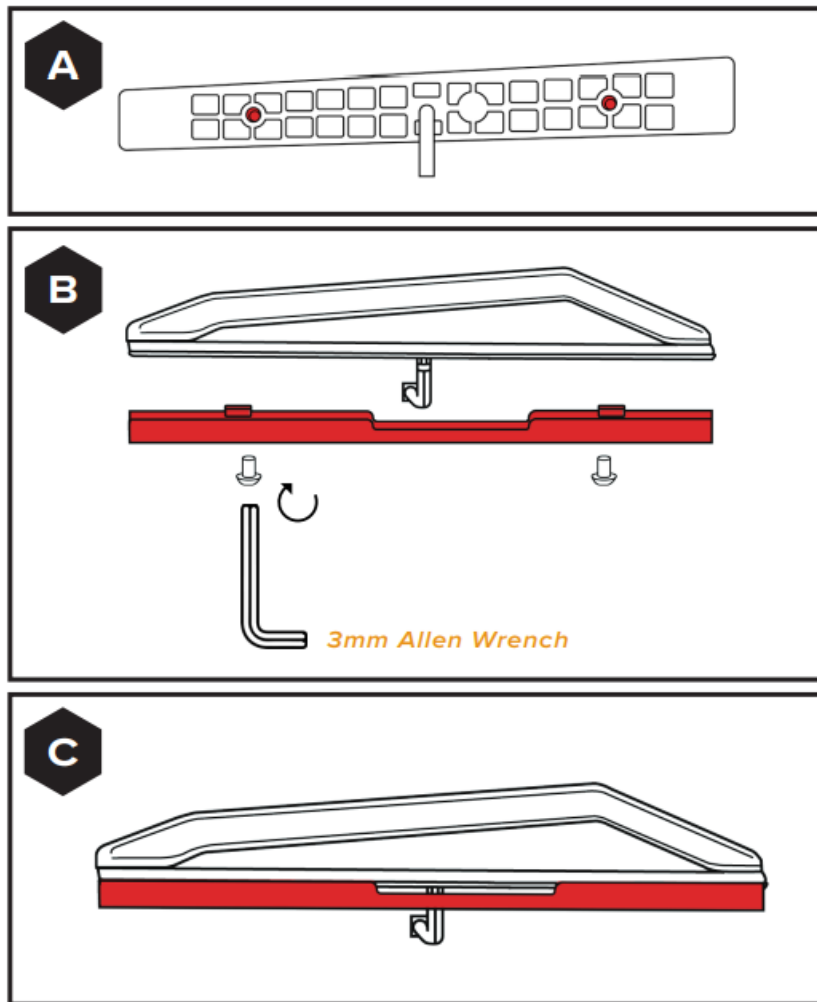
#### OPTION A – ROLLBARMOUNTING:

- OPTION A DIAGRAM – ROLL BAR MOUNTING



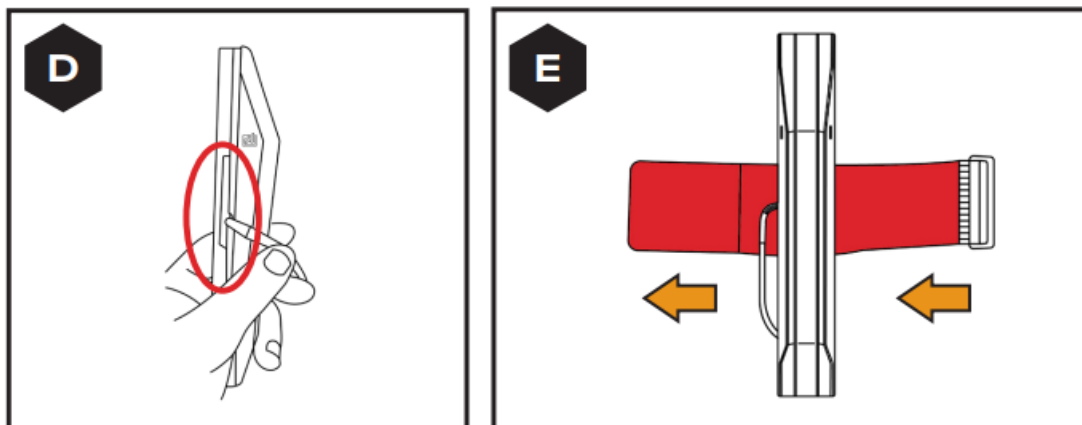
#### INSTALL ROLL BAR ADAPTOR

Install the roll bar adapter to the base of the light by using two of the M5 x 0.8 x 6mm Allen Screws with a 3MM ALLEN WRENCH. [SEE FIGURES A – C] NOTE: Select which side you would like your wire to exit the light that allows you to best hide your wires.



## INSTALL STRAP

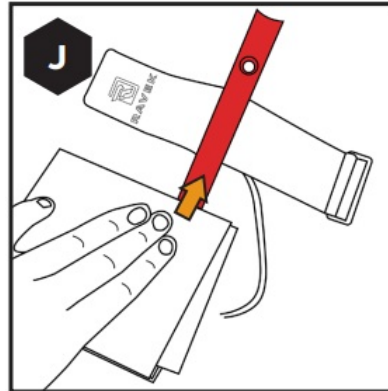
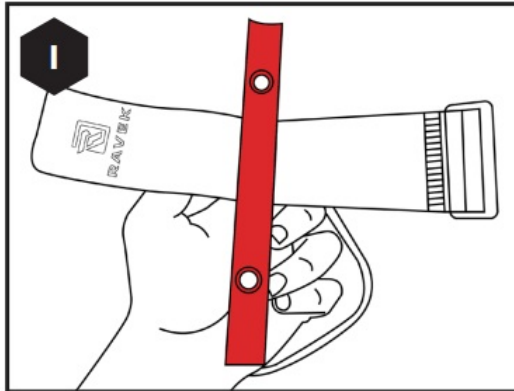
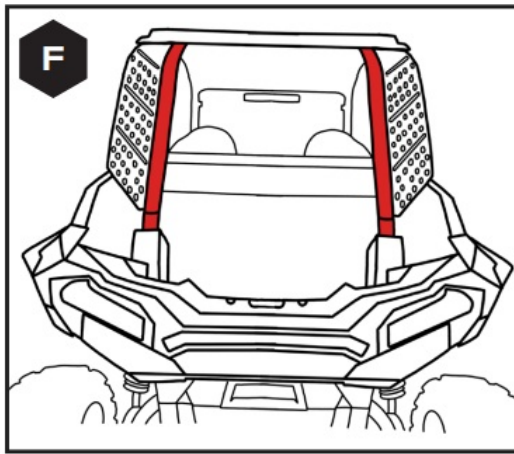
Once the roll bar adapter is secured to the light, install the strap provided through the opening between the light base and the roll bar adapter. [SEE FIGURES D & E]



## WIPE DOWN SURFACES

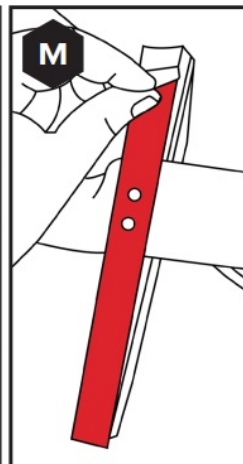
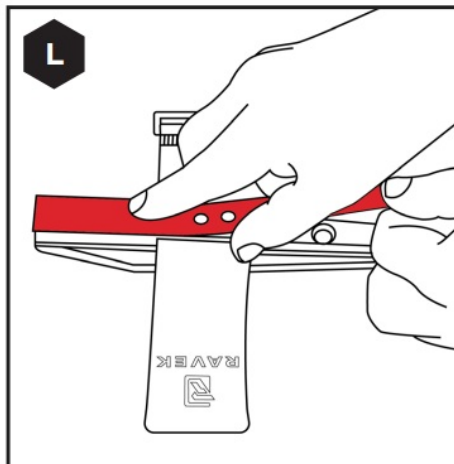
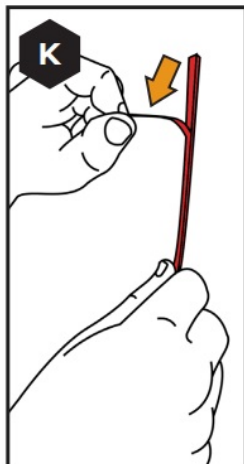
Before you permanently install your Apex Light to the UTV's roll bar you've chosen, wipe down the roll bar and the base of the light with the rubbing alcohol wipe provided and let dry. Next w, wipe down the roll bar and light base with the adhesion promoter wipe provided. Let dry. [SEE FIGURES F – J]





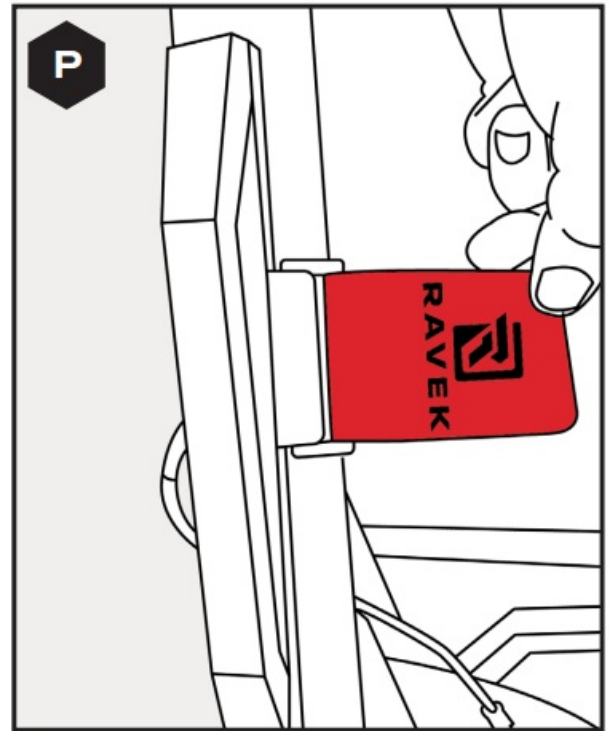
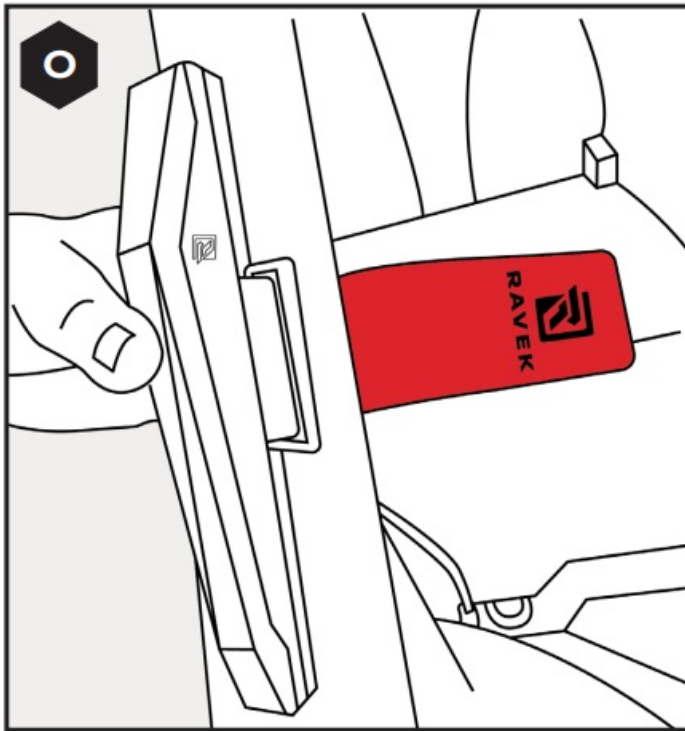
## APPLY TAPE

Apply the double-sided tape to the dry Apex Light's roll bar adapter, and attach the light to the surface you cleaned and prepared in the prior step. [SEE FIGURES K – N]



## TIGHTEN STRAP

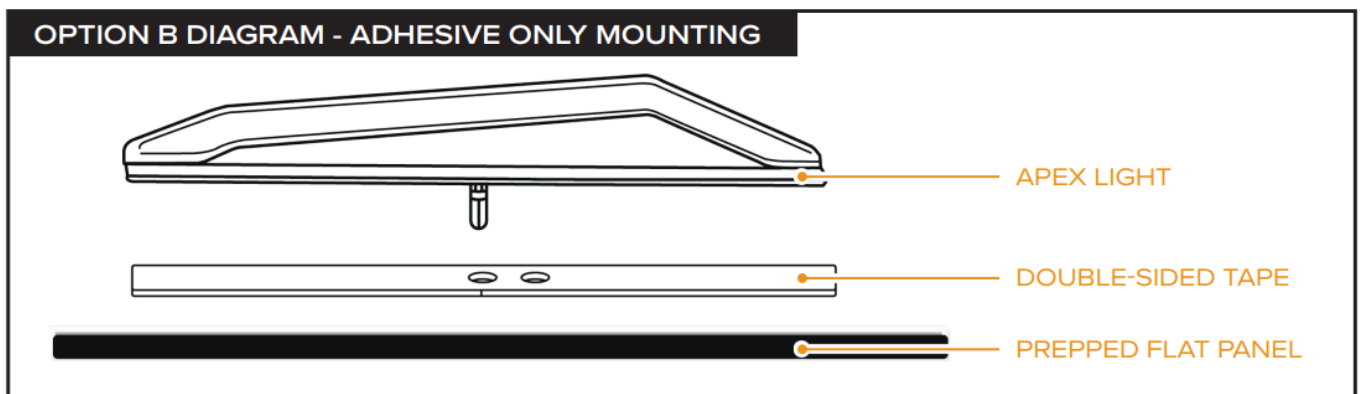
Tighten straps onto the ase and roll bar. [SEE FIGURES O & P] NOTE: If you have excess length of strap you can rotate the buckle away from the slack to reduce the slack in the strap



**JUMP TO STEPS 8-11 TO FINISH INSTALL**

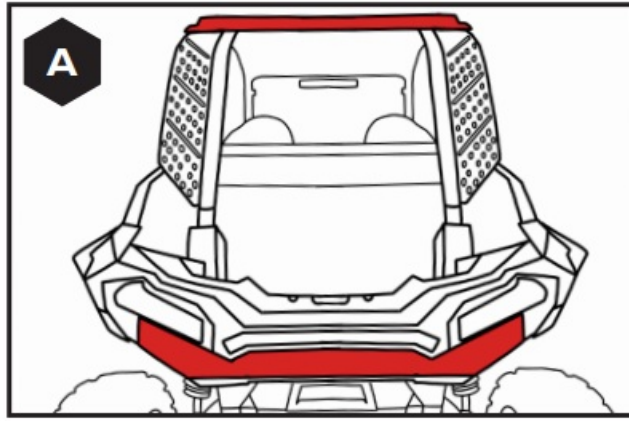
- OPTION B – ADHESIVE ONLY MOUNTING:

**OPTION B DIAGRAM – ADHESIVE-ONLY MOUNTING**



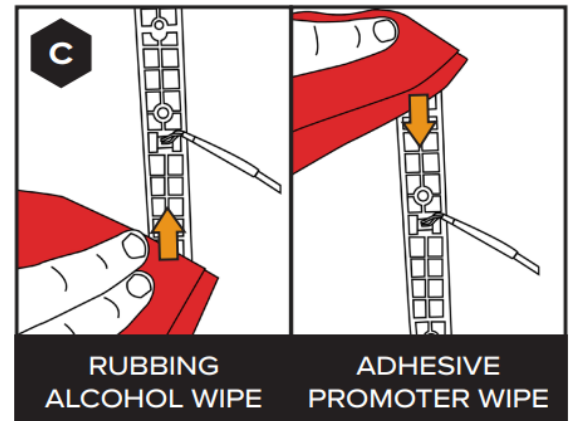
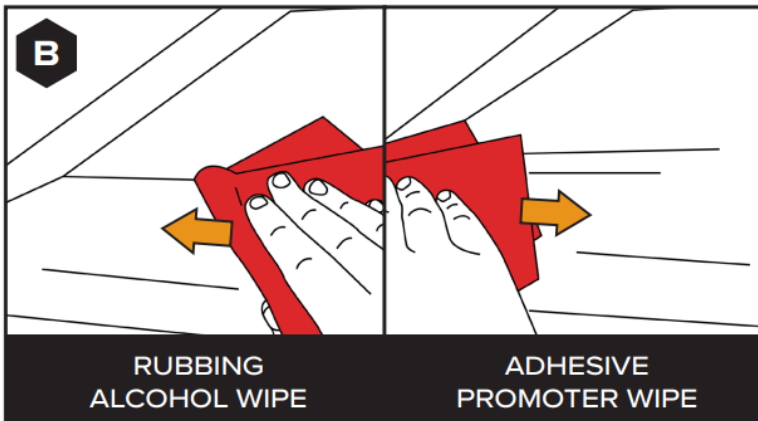
**LOCATE A SURFACE TO MOUNT TO**

Locate an exterior panel with 8" of flat surface for mounting. [SEE FIGURE A] NOTE: If you're adhesive mounting the Apex Lights to the roof, we recommend drilling a hole to feed the wires through. The Apex Light adhesive creates a water-tight seal.



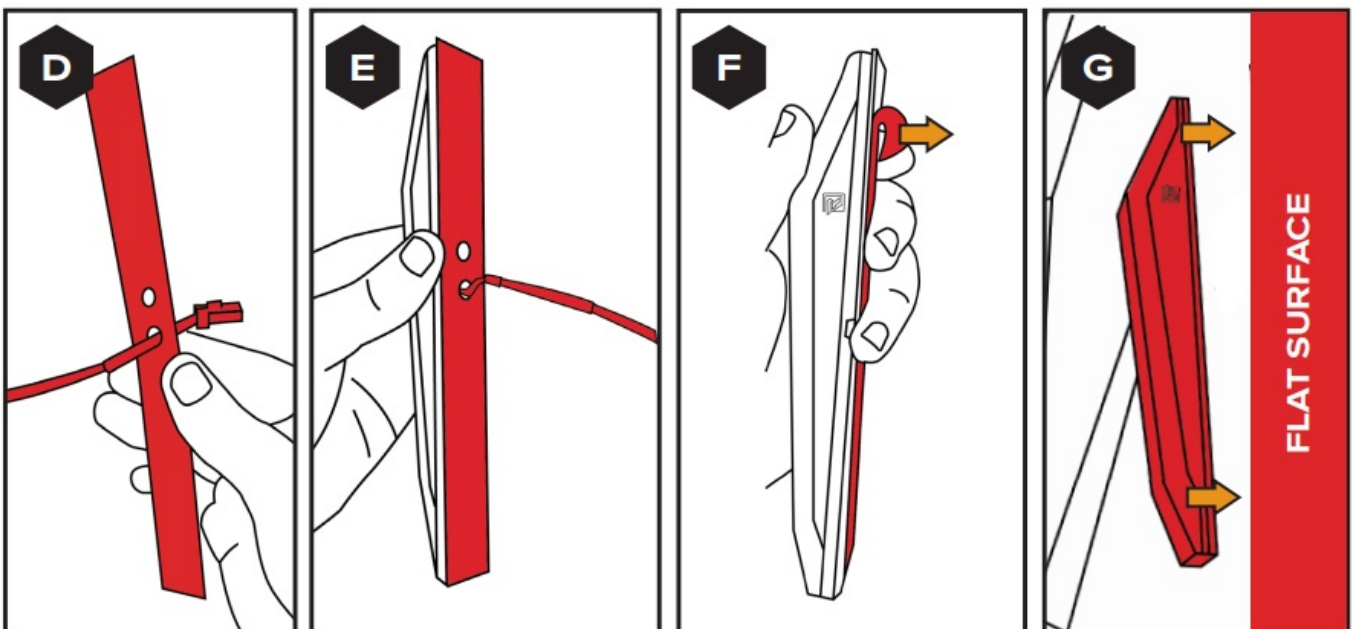
## WIPE DOWN SURFACES

Before you permanently install your Apex Light to the UTV's flat panel you've chosen, wipe down the panel and the base of the light with the rubbing alcohol wipe provided and let dry. Next, wipe down the panel and light base with the adhesion promoter wipe provided. Let dry. [SEE FIGURES B & C]



## APPLY TAPE

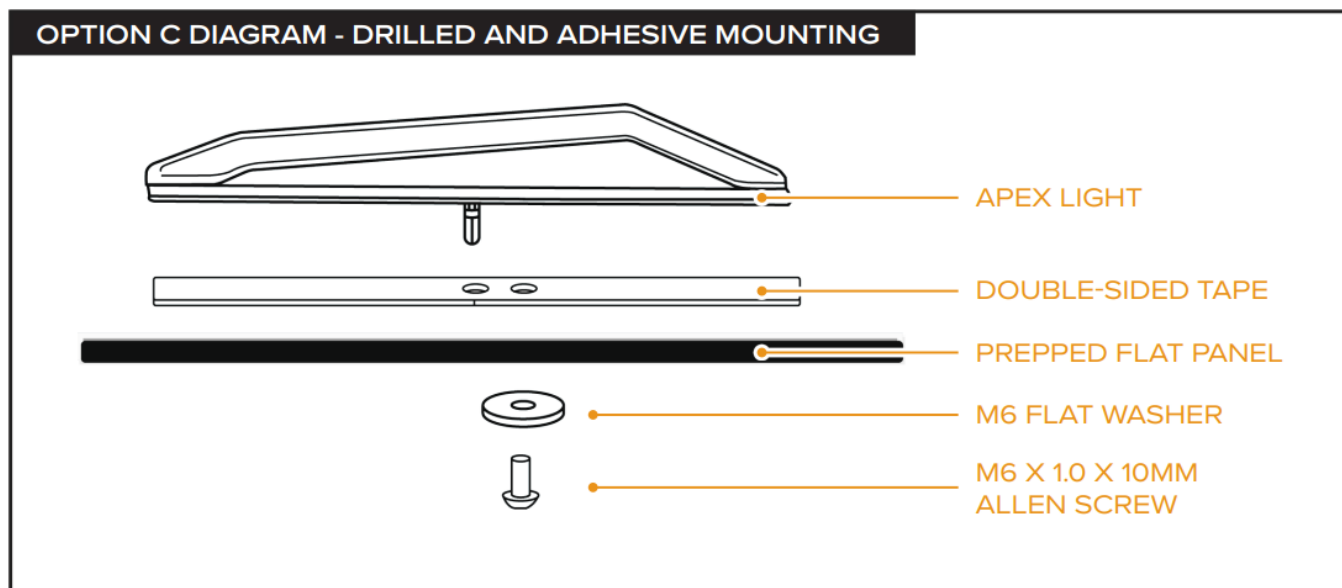
Apply the double-sided tape to the Apex Light's base and affix the light to the prepped surface. [SEE FIGURES D – G] NOTE: Be sure the whole light's base is in contact with the surface of the UTV to ensure the light will hold up permanently.



## JUMP TO STEPS 8-11 TO FINISH INSTALL

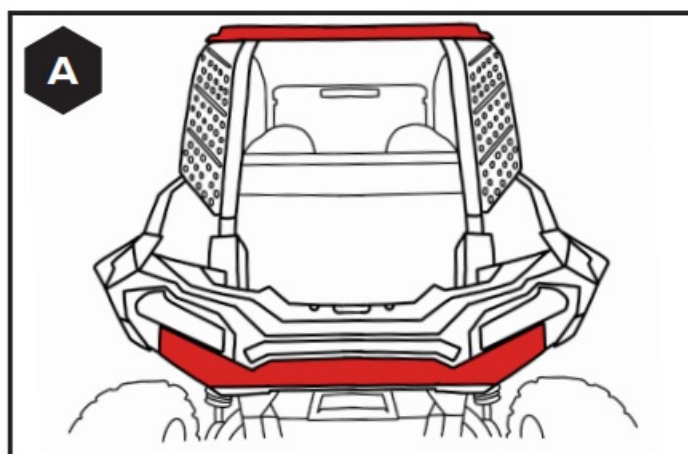
- OPTION C – DRILLED AND ADHESIVE MOUNTING:

### OPTION C DIAGRAM – DRILLED AND ADHESIVE MOUNTING



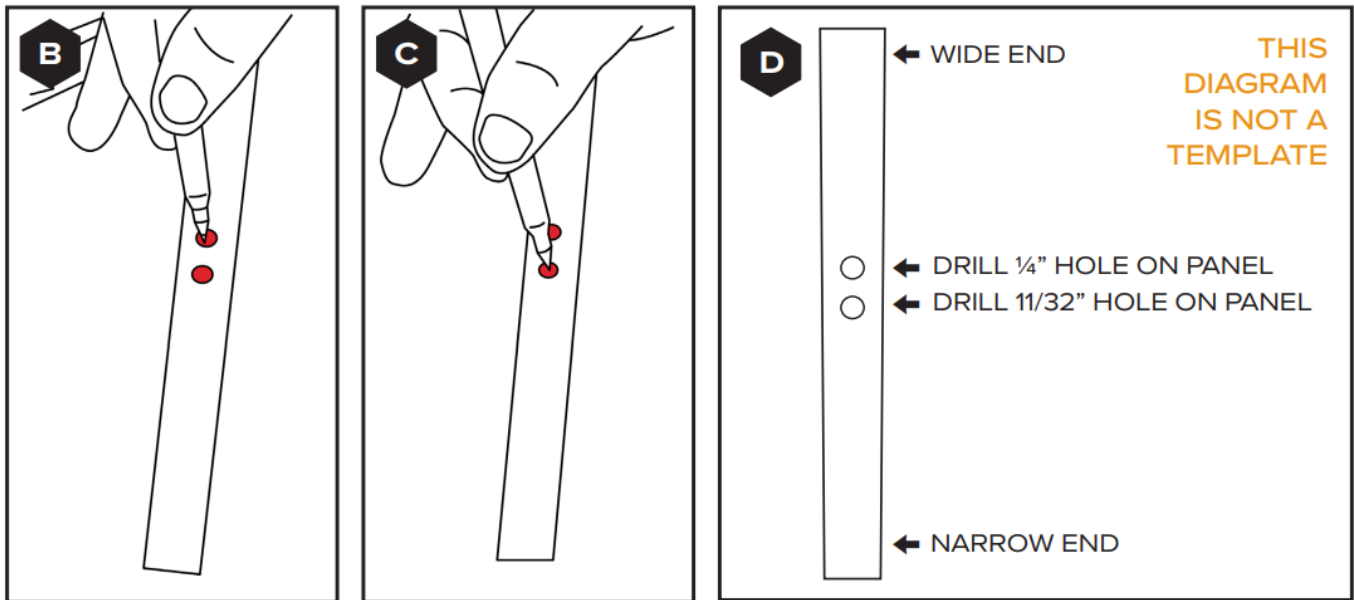
### LOCATE A SURFACE TO MOUNT TO

- Locate an exterior panel with 8" of flat surface for mounting. [SEE FIGURE A]



### MARK HOLES TO DRILL

Use the double-sided tape holes as a template for the drilling locations. Confirm you can access the inside of the panel that you'll need to be able to access this area with your flat washer. [SEE FIGURES B – D]



### DRILL 1/4" HOLE

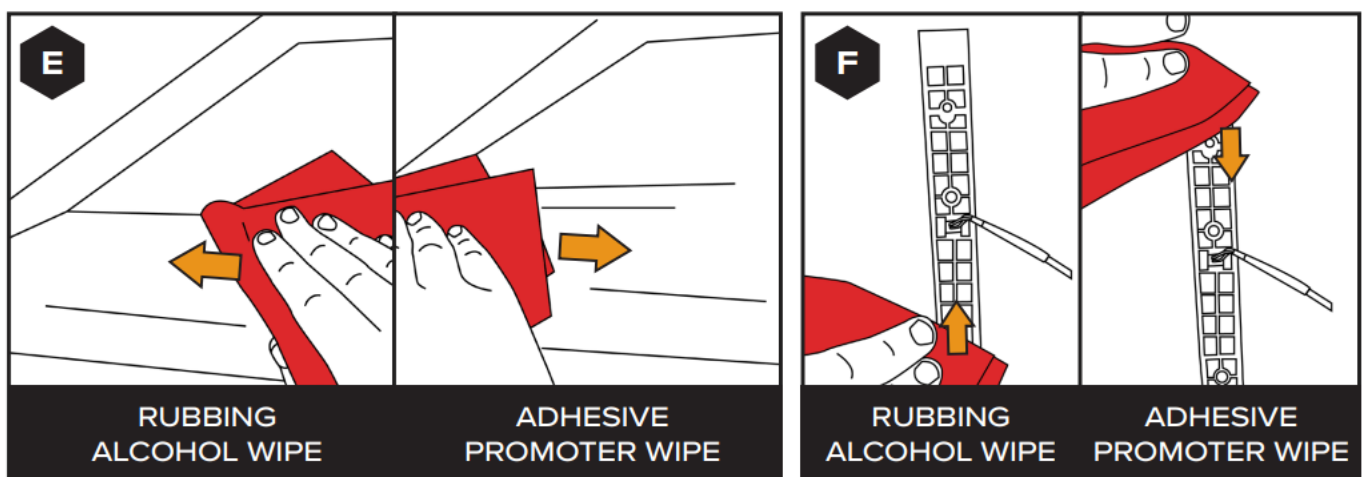
- Once you have your holes marked, drill a 1/4" hole that will be used to feed the screw through.
- NOTE: We recommend using a brad point drill bit to avoid damaging your panel.

### DRILL 11/32" HOLE

- Drill a 11/32" hole that you will feed the Apex Light's wire connector through.

### WIPE SURFACE WITH RUBBING ALCOHOL

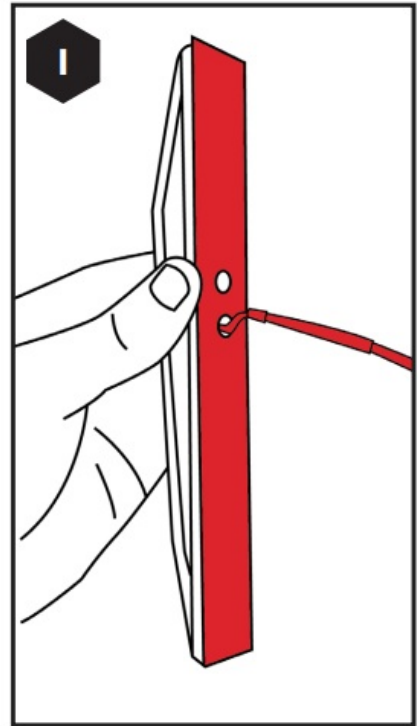
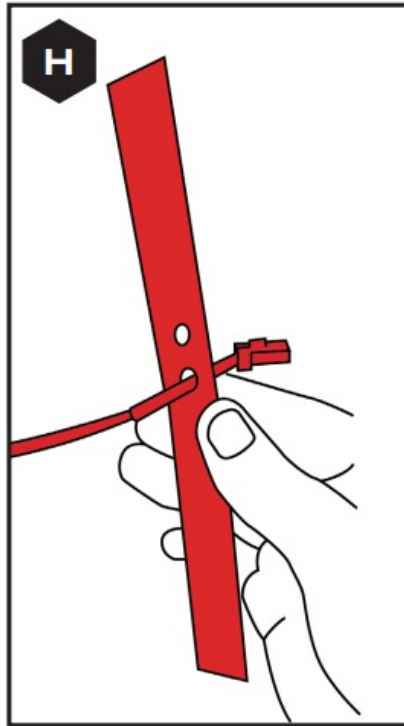
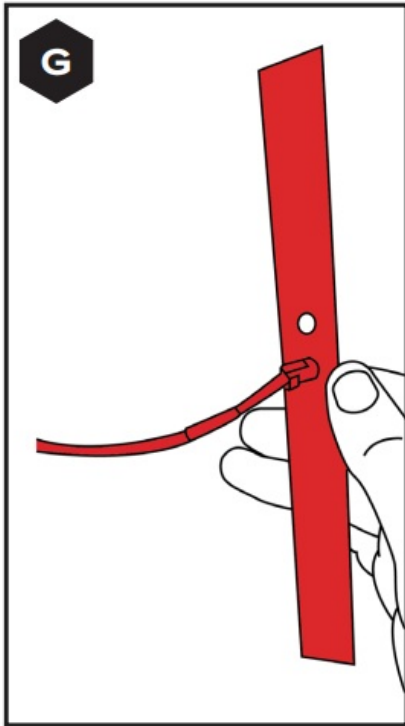
Before you permanently install your Apex Light to the UTV's flat panel you've chosen, wipe down the panel and the base of the light with the rubbing alcohol wipe provided and let dry. Next, wipe down the panel and light base with the adhesion promoter wipe provided. Let dry. [SEE FIGURES E & F]



### APPLY TAPE

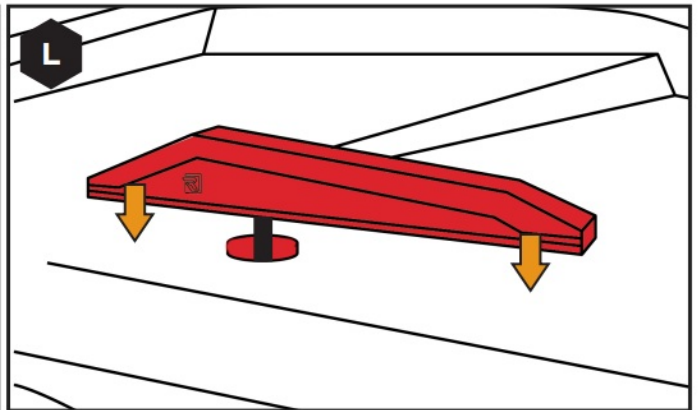
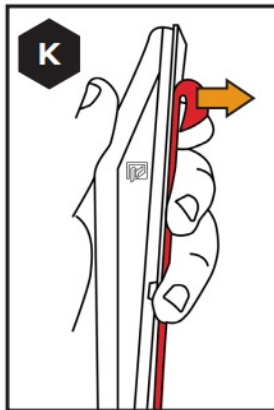
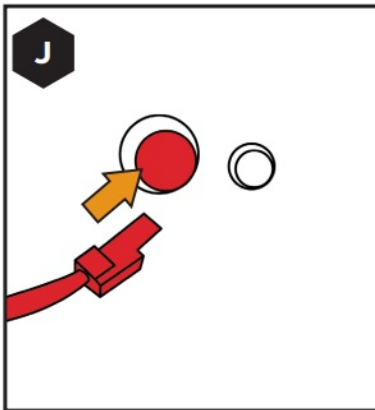
- Apply the double-sided tape to the Apex Light's base. [SEE FIGURES G – I]





### ADHERE LIGHT TO PREPPED SURFACE

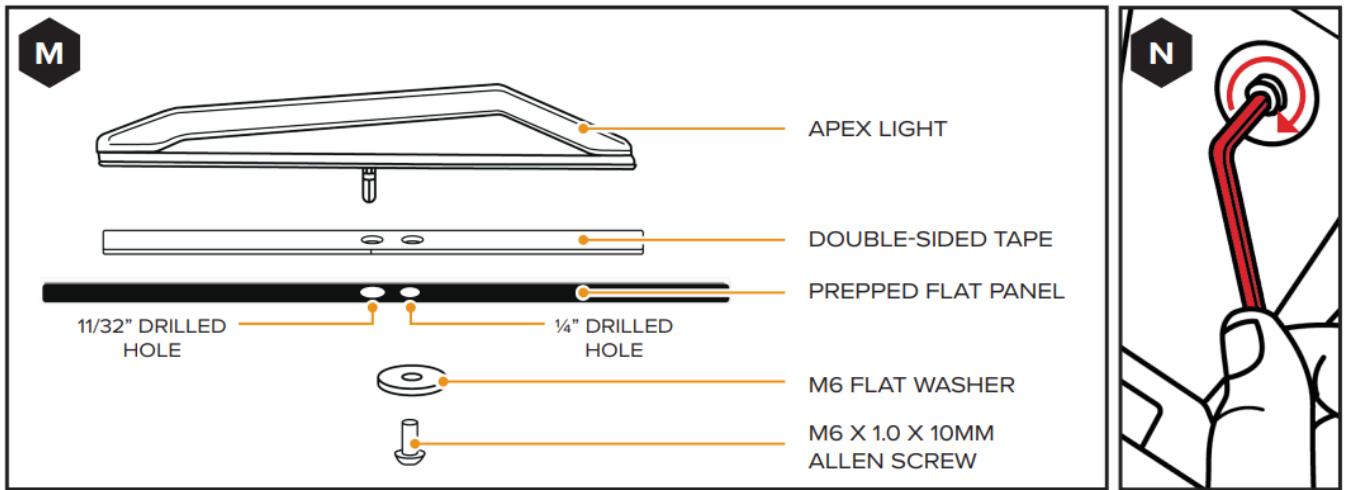
Feed your light's wiring through the 11/32" hole. Peel away the double-sided tape cover, and stick the Apex Light to the prepped surface. [SEE FIGURES J – L]



### THREAD IN SCREW

Thread your M6 x 1.0 x 10mm Socket Allen Screw with an M6 Flat Washer through the backside of the panel into the light's base using a 4MM ALLEN WRENCH. [SEE FIGURES M & N] NOTE: If a longer screw is required, you have two options:

1. Give us a call or email, and we will express mail you a screw of the length you need.
2. Go to your local hardware store and purchase a M6 x 1.0 x (your desired length).

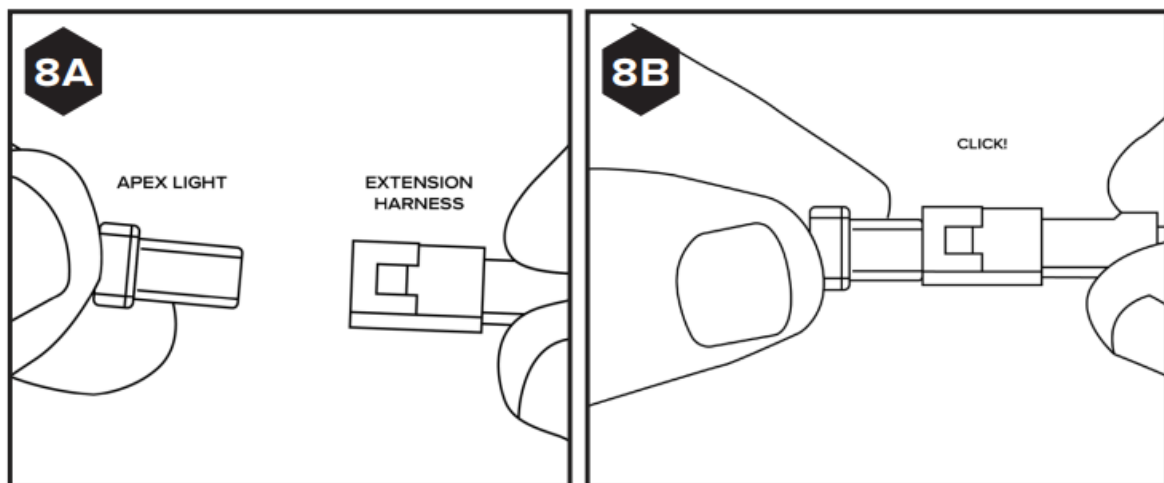


**JUMP TO STEPS 8-11 TO FINISH INSTALL**

## CONTINUATION STEPS 8-11

### PLUG IN THE APEX LIGHT

- Plug your Apex Light into the extension harness. [SEE FIGURES 8A & 8B] NOTE: Remember to heat shrink all your connection points as seen in step 2.



### REPEAT STEPS 1 TO 8

- Repeat steps 1 through 8 on the right side of the RZR to install your other Apex Light.

### LET THE ADHESIVE CURE

- Let adhesive tape cure for 24 hours before riding.

### SECURE WIRING

- Once you have both of your Apex Lights mounted, go through and secure all the wiring using the zip ties provided.
- NOTE: Secure wiring away from hot or moving components.

- NOTE: Remember to heat shrink all your connection points as seen in step 2.

## WHY RAVEK

- Stock UTVs don't come with enough storage, lighting, comfort, and protection. That's why we started RAVEK.

We live to design, manufacture, and test innovative SxS upgrades that elevate the riding experience. Here's what you can expect from us:

- Durable products built to last (100% lifetime guarantee)
- UTVupgrades aree thoughtfully designed & tested by riders
- Outstanding installation support (videos & USA customer service)
- CThconstant flowow of epic riding content (check out our social media)

We're confident your RAVEK product will earn its place on your machine. Please call or e-mail us if we can help.

### Harry & Ricky (Brothers & Owners)




#### MESSAGE FROM THE DESIGNER

Has anyone ever noticed how there are far fewer light options for the rear of these vehicles than the front? The contours of the Apex Lights in red just pop to me. Not only are you adding the safety of more rearward-facing taillights, but they also inevitably make anything look badass, am I right?

- RAVEK POLARIS RZR XP 2019-2023 PLUG & PLAY APEX LIGHTS (REAR RED)

## Documents / Resources

	<p><a href="#">RAVEK 2017-2023 Polaris RZR XP Apex Light</a> [pdf] Instruction Manual</p> <p>2017-2023, 2019-2023, 2017-2023 Polaris RZR XP Apex Light, 2017-2023, Polaris RZR XP Apex Light, RZR XP Apex Light, Apex Light, Light</p>
---	--

## References

- [User Manual](#)

[Manuals+](#), [Privacy Policy](#)

This website is an independent publication and is neither affiliated with nor endorsed by any of the trademark owners. The "Bluetooth®" word mark and logos are registered trademarks owned by Bluetooth SIG, Inc. The "Wi-Fi®" word mark and logos are registered trademarks owned by the Wi-Fi Alliance. Any use of these marks on this website does not imply any affiliation with or endorsement.