



Contents [[hide](#)]

- [1 RAVEK 2015 Plus Plug and Play Multi-Function Tail Light](#)
- [2 Tools](#)
- [3 PARTS INCLUDED](#)
- [4 PREP THE VEHICLE](#)
- [5 MOUNT LIGHT](#)
- [6 MULTI-MOUNT BRACKET LIGHT INSTALL](#)
- [7 MAKE YOUR CONNECTIONS](#)
- [8 HOOK UP ROCKER SWITCH](#)
- [9 TIDY UP YOUR MACHINE](#)
- [10 Documents / Resources](#)
 - [10.1 References](#)



RAVEK 2015 Plus Plug and Play Multi-Function Tail Light



Tools



***Push Pin
Pliers***



***13mm
Wrench***



Ratchet



***10mm
Socket***

PARTS INCLUDED

- UTV Multi-function Tail Light (1x)
- Main Harness (1x)
- Tail light Harness (2x)
- Tail light Extension Harness (1x)
- Work Light Harness (1x)
- Battery Positive Harness (1x)
- Battery Negative Harness (1x)
- Multi-function Bracket (6x)
- 18-8 Long Allen Bolt (3x)

- Rocker Switch (1x)
- Rocker Switch Adapter (1x)
- Zip Tie (10x)
- Adhesive Promotor Wipe (2x)
- Rubbing Alcohol Wipe (2x)
- Heat Shrink (1x)
- Dielectric Grease (1x)
- M6 Small Allen Bolt (3x)
- M6 Nut (3x)

INSTALL VIDEO TUTORIAL

DON'T LIKE INSTRUCTIONS? VISIT OUR WEBSITE TO ACCESS THE VIDEO TUTORIAL.

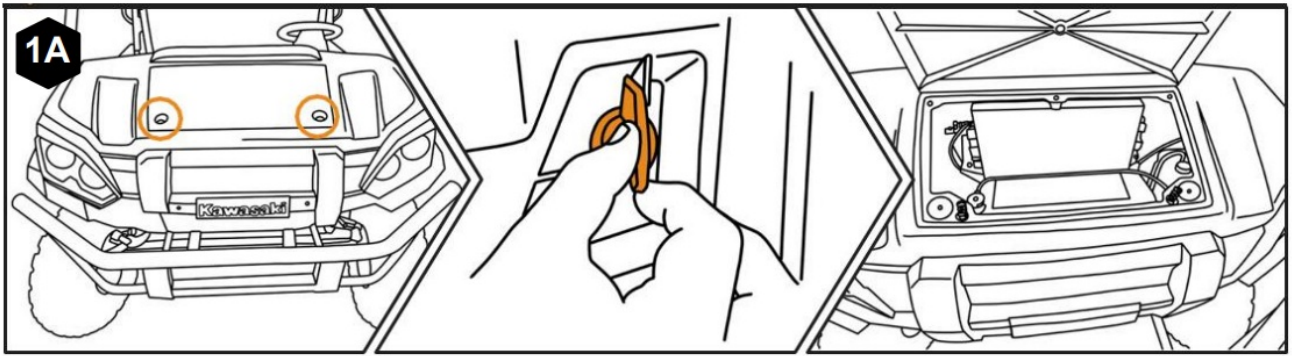


GENERAL NOTES

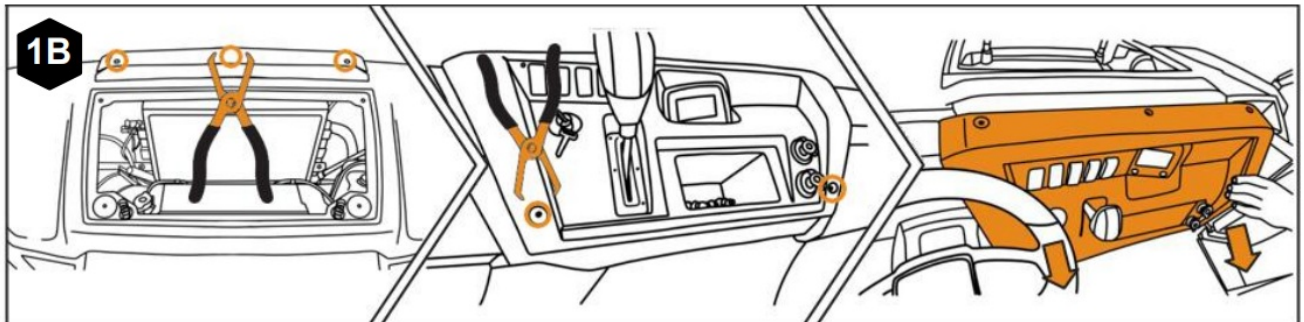
- Throughout this process, be sure to keep track of any screws or fasteners you remove as they will be re-installed in the same location.
- Make sure your vehicle is off and key is out of the ignition before starting.
- Dielectric grease is provided, and you can use it for added protection.

PREP THE VEHICLE

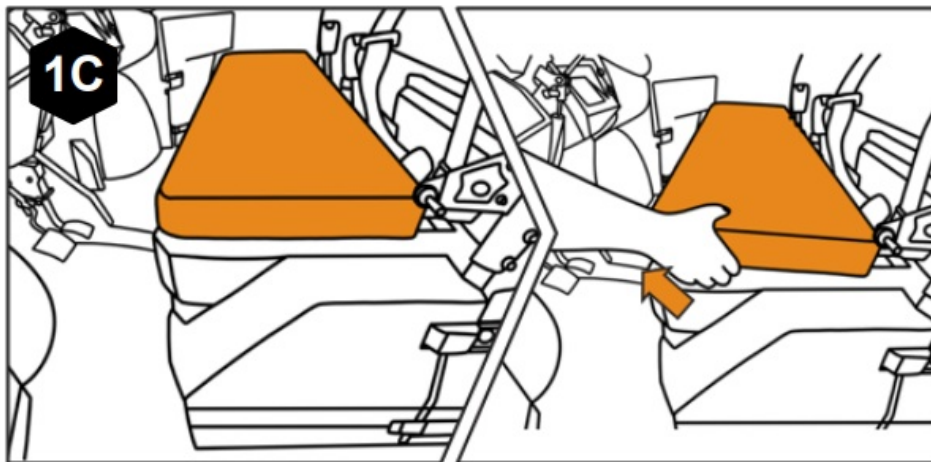
1. Unlatch the hood of your Mule to make the next steps easier. While this step is recommended, it is optional and can be skipped if preferred. [SEE FIGURE 1A]



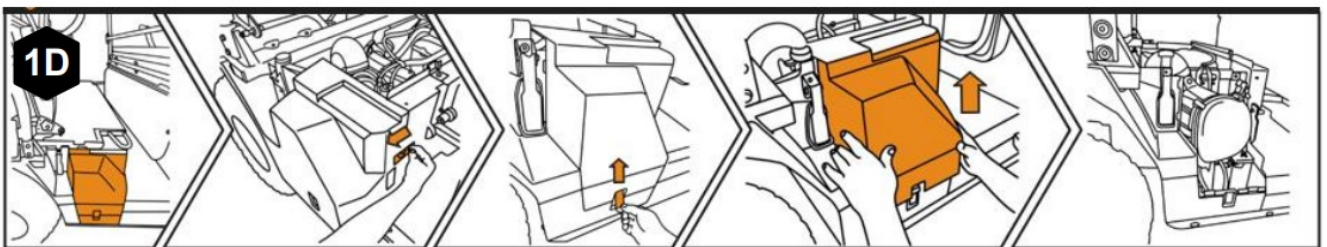
2. Using push pin pliers, remove the 5 push pins shown in the illustrations below. This will make routing the wiring much easier. [SEE FIGURE 1B]



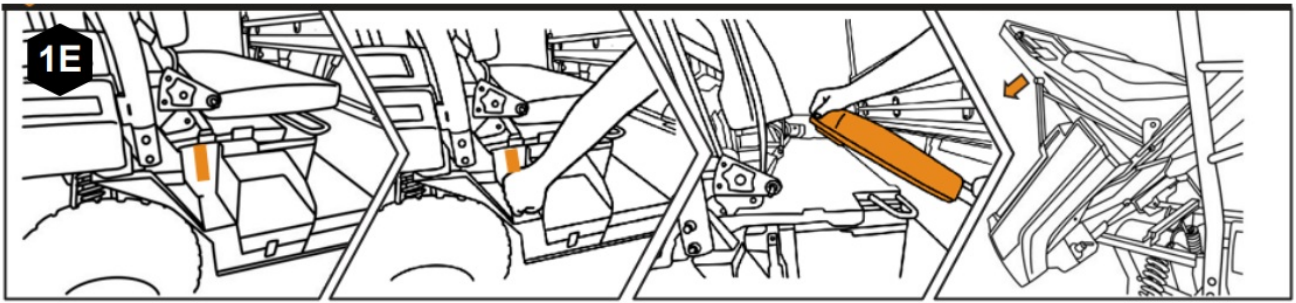
3. Remove the front bench seat pad by gently pulling it upward—no tools are required. [SEE FIGURE 1C]



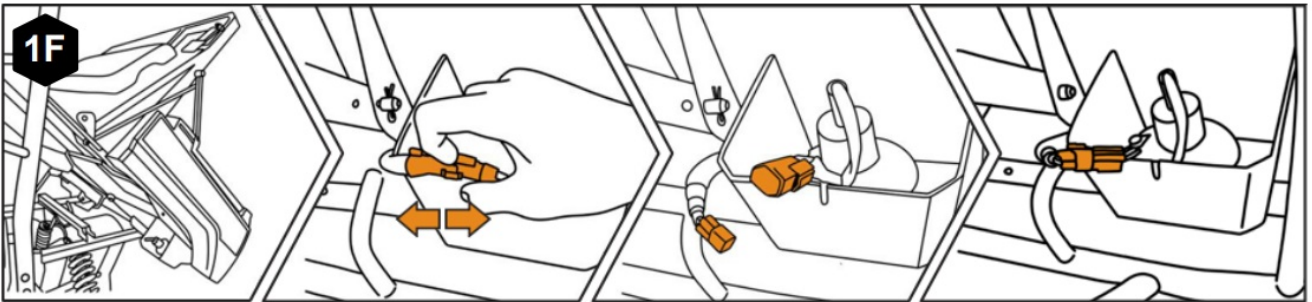
4. Remove the outer air filter cover by releasing the hooks and lifting it off. This will provide easier access for wire routing. [SEE FIGURE 1D]



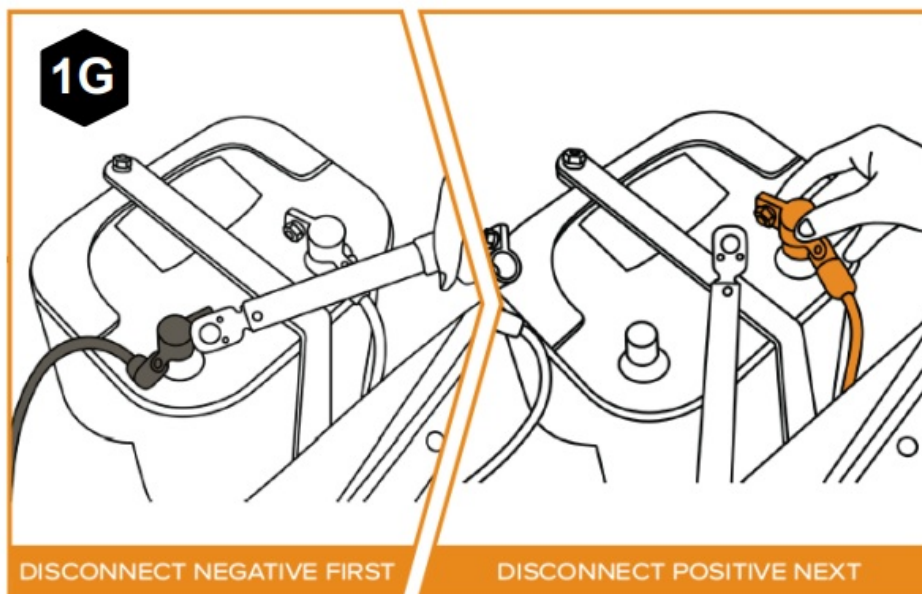
5. Release the dump bed latch and slide the bench seat forward. Then, tilt the bed to gain access to the taillights. [SEE FIGURE 1E]



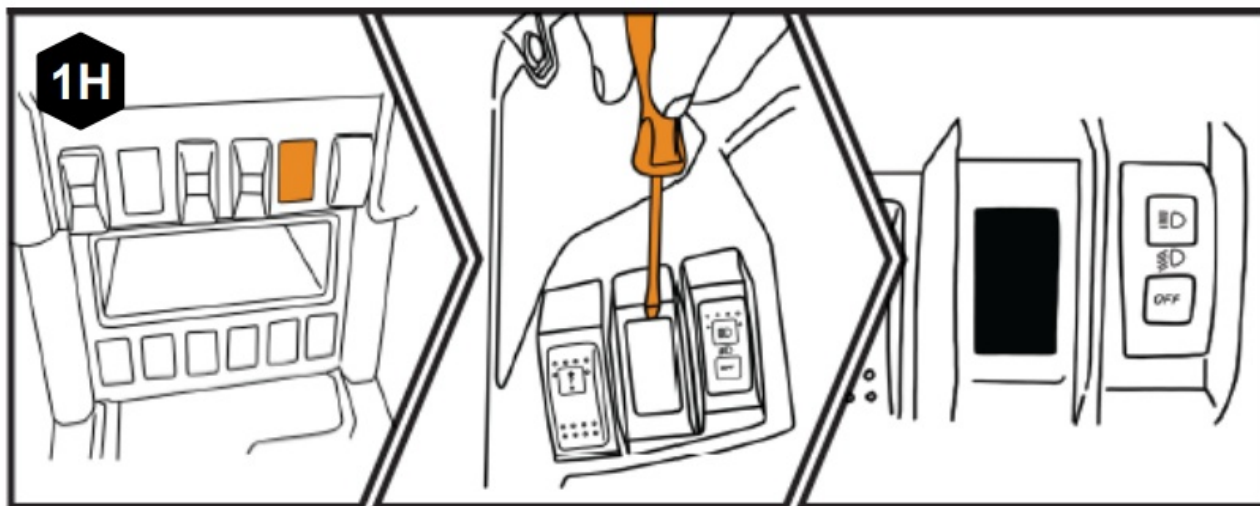
6. Unplug the taillights. You will connect the rear harnesses to their designated taillights in a later step. [SEE FIGURE 1F]



7. Disconnect your battery. [SEE FIGURE 1H]



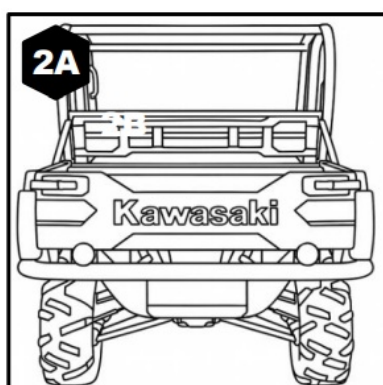
8. Locate an open rocker switch location on your dash and remove the knockout cover. [SEE FIGURE 1H]



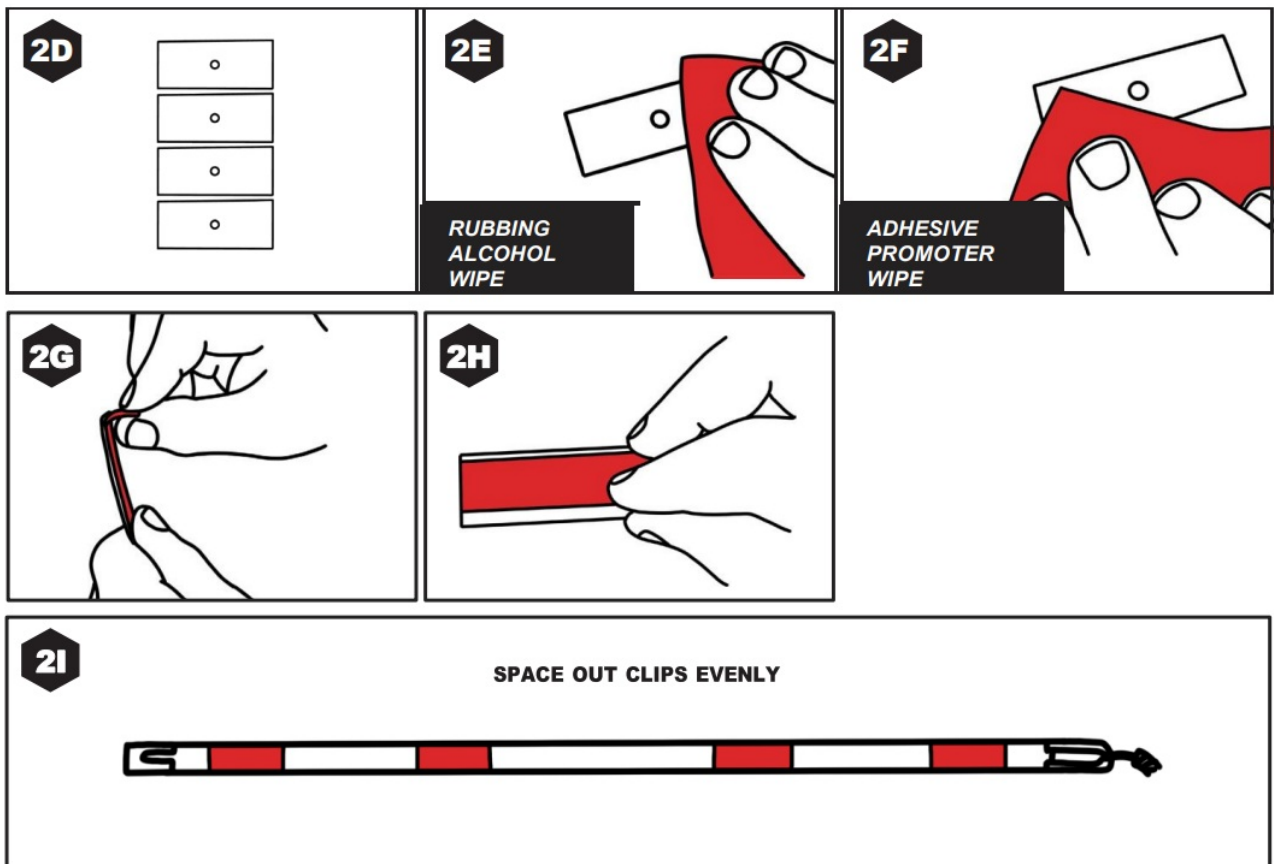
MOUNT LIGHT

1. Wipe your lower tailgate half using one of the rubbing alcohol wipes provided. Let dry. Wipe the same surface with one of the adhesive promoter wipes provided. Let dry.

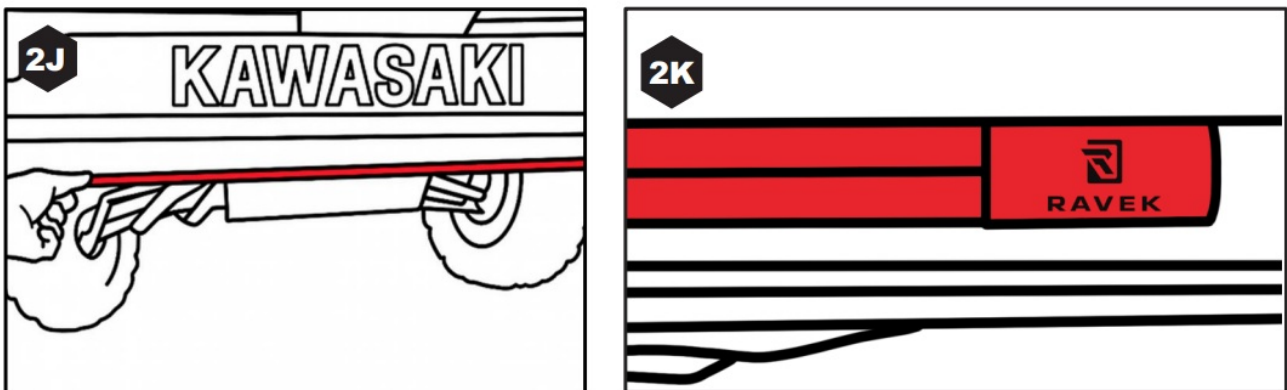
[SEE FIGURES 2A-2C]



2. Locate the four mounting clips provided in the kit. [SEE FIGURE 2D] Clean the back surface of the mounting clips using a rubbing alcohol wipe. Let dry. [SEE FIGURE 2E] Wipe down the surface of the mounting clips with the adhesive promoter wipe. Let dry. [SEE FIGURE 2F] Place the double sided tape on to the back surface of the mounting clips and place them on the back of the light. [SEE FIGURE 2D – 2I]

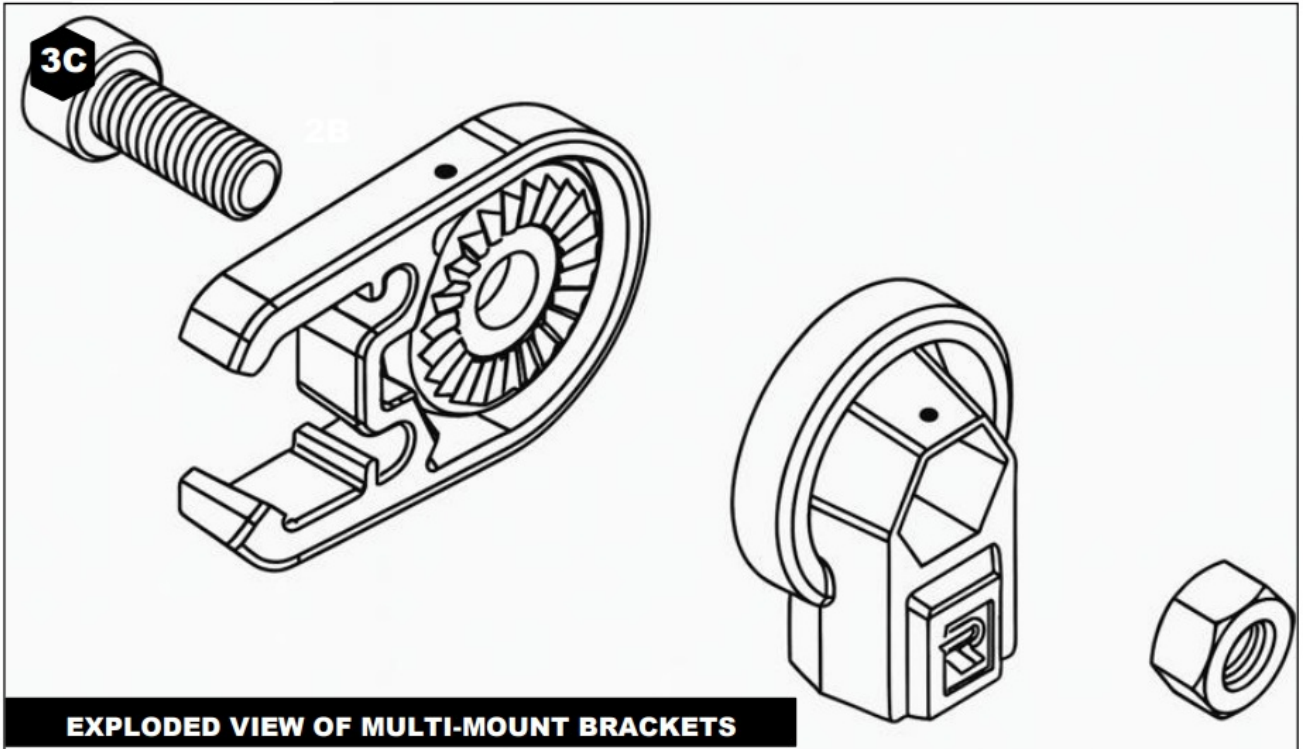
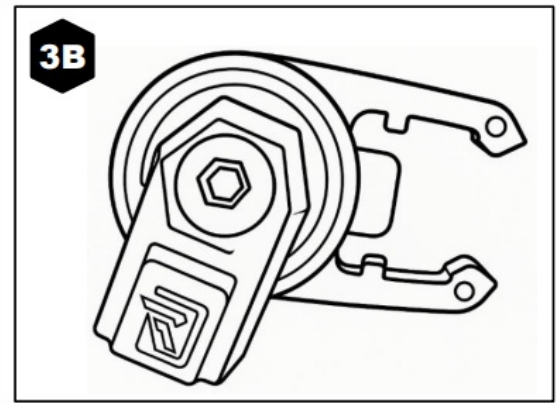
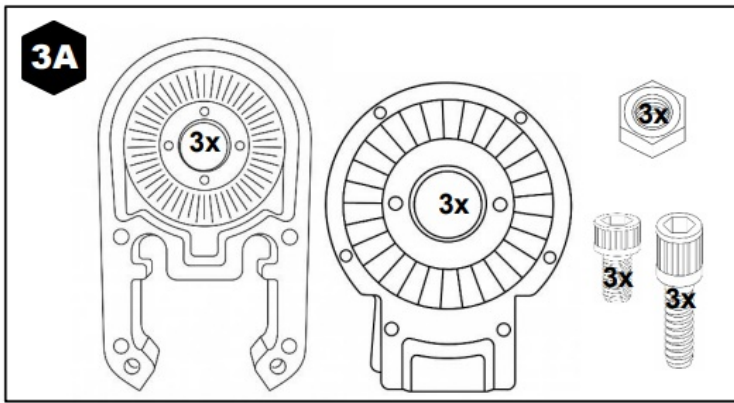


3. Peel off the double sided tape protective film and stick the light to the clean tailgate surface. [SEE FIGURE 2J] NOTE: Install the light so the RAVEK logos on the end caps are right side up. [SEE FIGURE 2K]

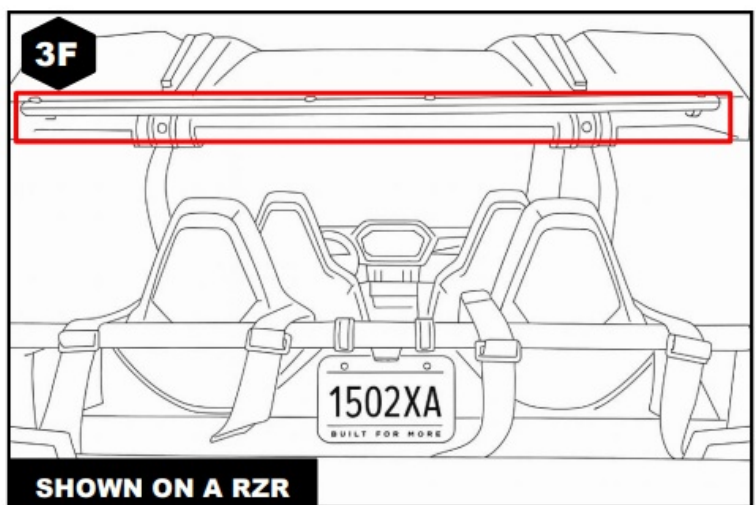
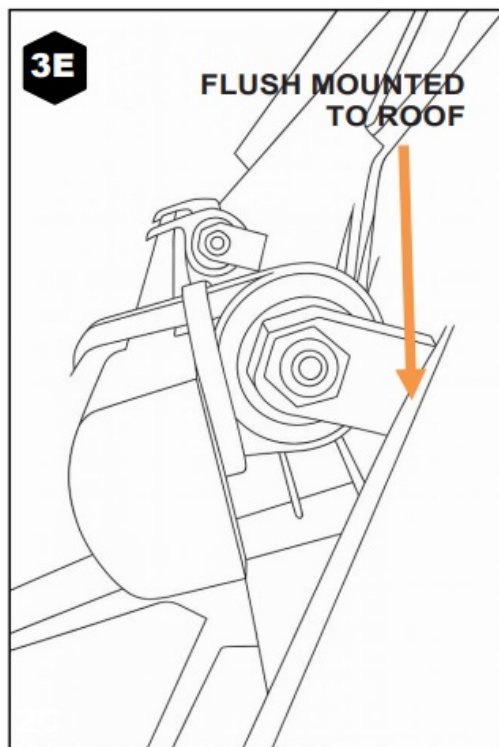
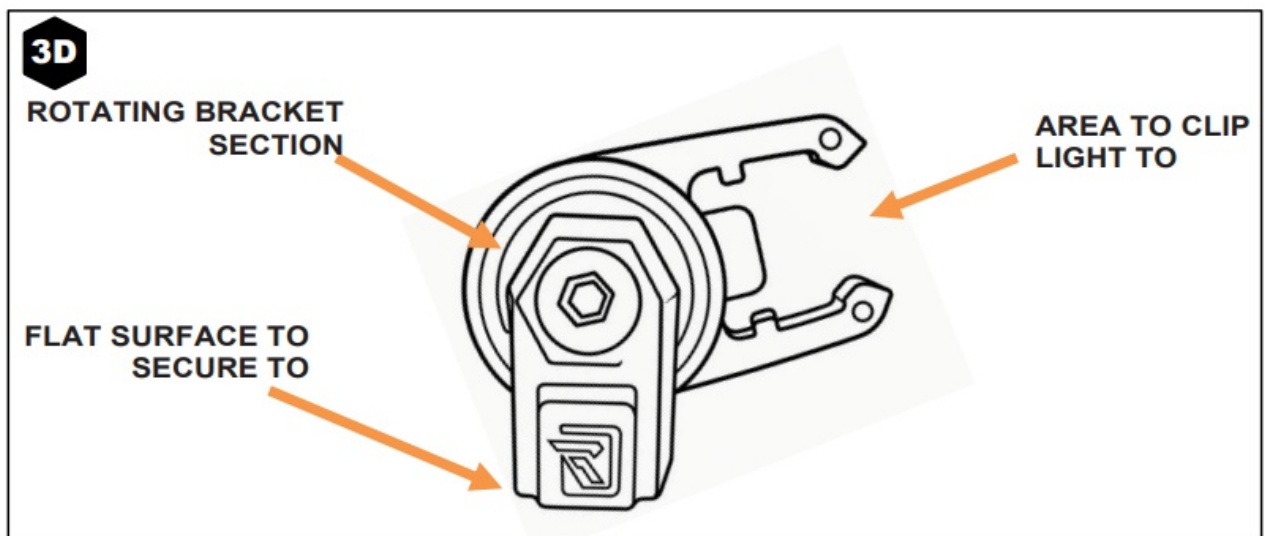


MULTI-MOUNT BRACKET LIGHT INSTALL

1. Assemble the multi- mount brackets using the provided 18-8 long Allen head bolts, and M6 nuts. Tighten the brackets using a 4mm Allen wrench and a 10mm wrench or socket with ratchet. [SEE FIGURES 3A – 3C]

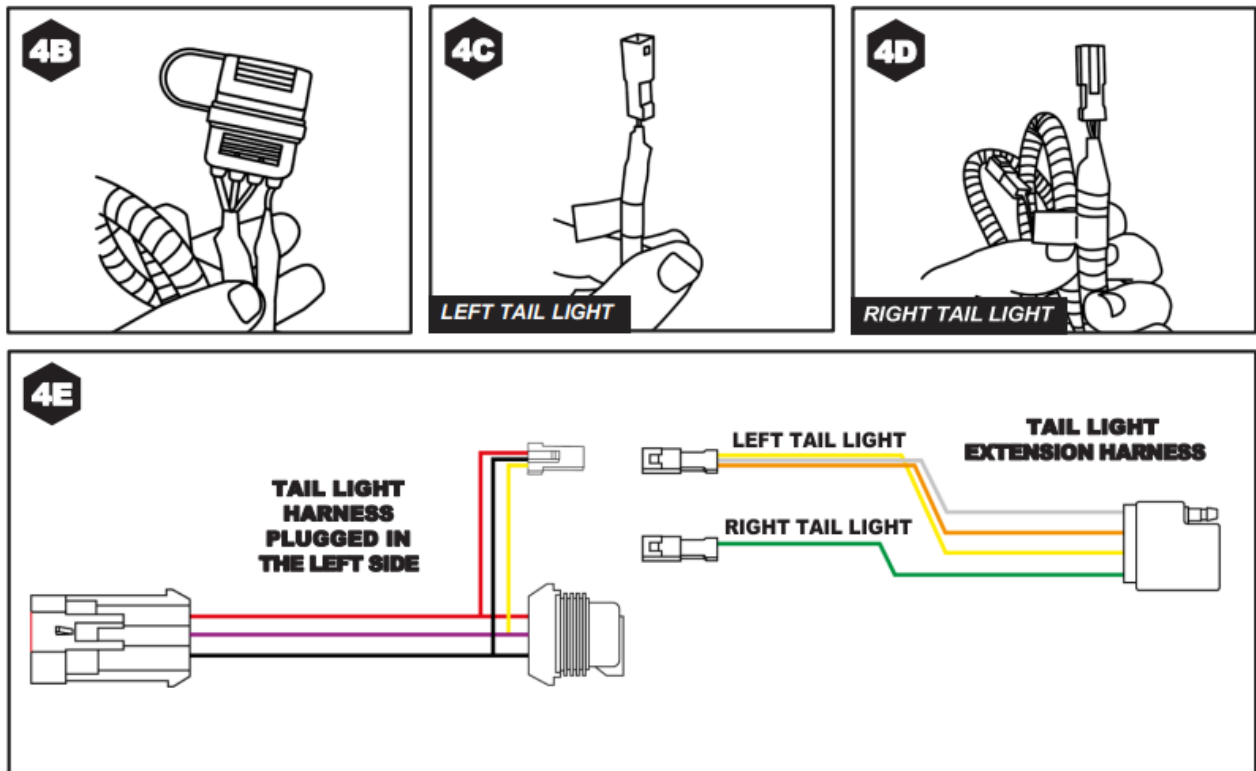


2. Drill mounting holes in the UTV roof or chosen surface using a 6mm drill bit. Align the brackets and secure them by feeding the provided M6 small Allen head bolts from inside the cab through the panel into the brackets. Once the brackets are installed, mount the light onto the brackets. [SEE FIGURES 3D – 3F] NOTE: The multi-function brackets are designed for flexible installation and can be mounted on either the tailgate or the roof, depending on your preference.



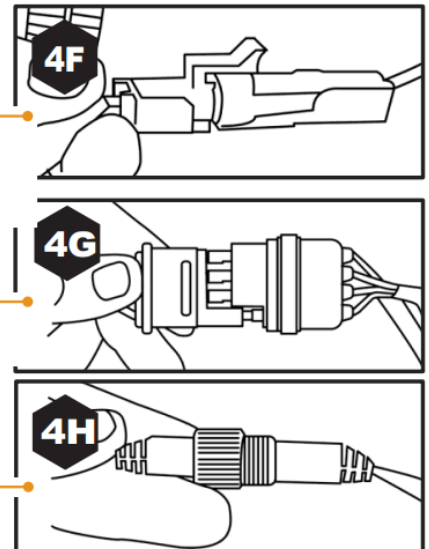
MAKE YOUR CONNECTIONS

1. Grab both of your Tail Light Harnesses and plug them in line to your OEM tail light and harness. [SEE FIGURE 4A] NOTE: If additional accessories are plugged into the tail light already, connect the Multi-function Tail Light Harness closest to the OEM tail light.



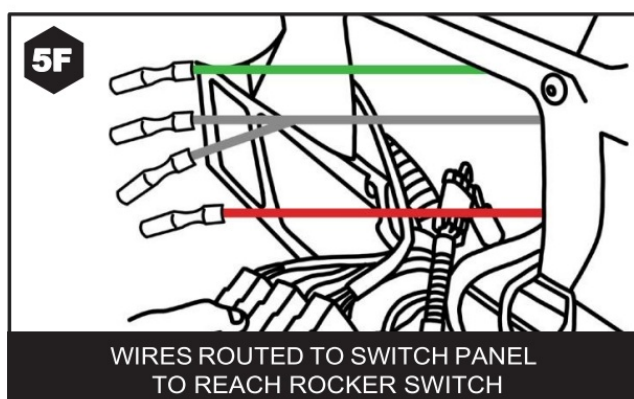
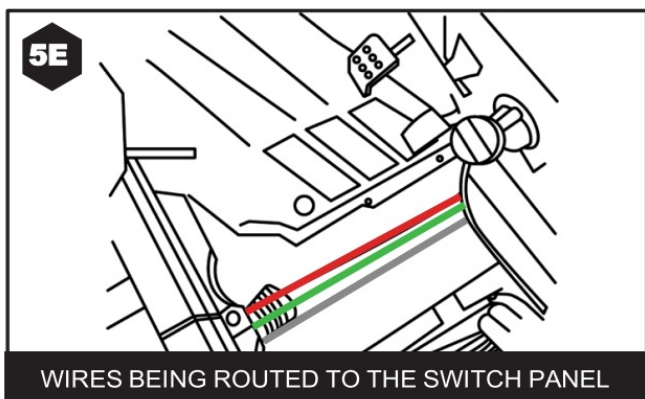
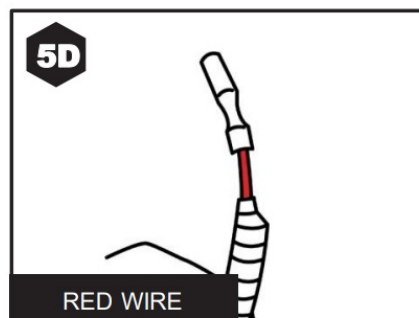
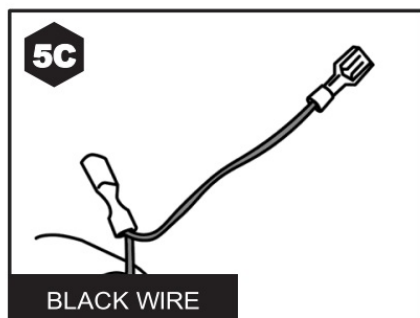
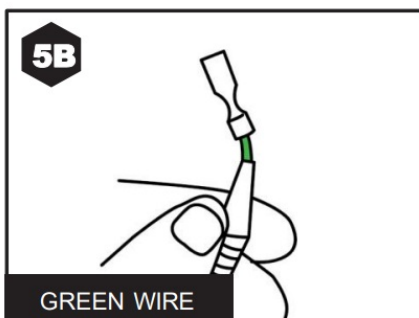
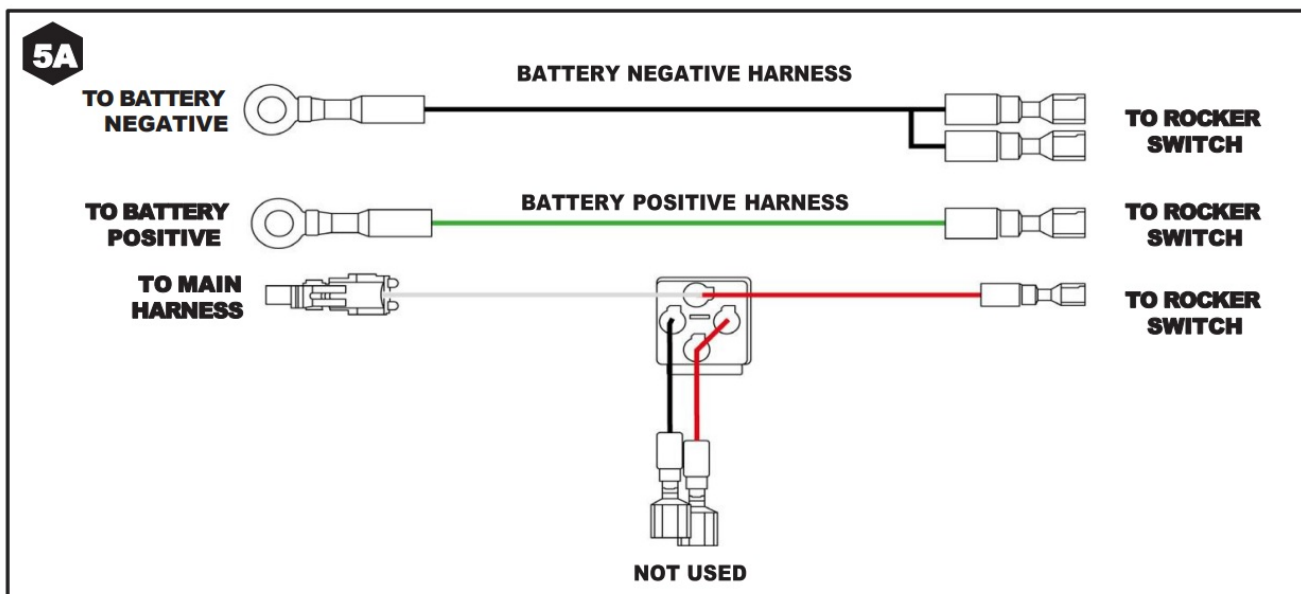
Set your Main Harness (harness with the controller box) in the engine compartment and make the following connections [SEE FIGURES 4F – 4H]

- Plug in the 1-pin connector coming out the white wire on the Main Harness to the Work Light Harness (harness with relay)
- Plug in the trailer connector coming out the Main Harness to the connector on the Tail Light Extension Harness on the middle of the Wolverine
- Plug in the 4 pin connector coming out the Main Harness to the connector on the light connector on the light to the left side of the Ranger

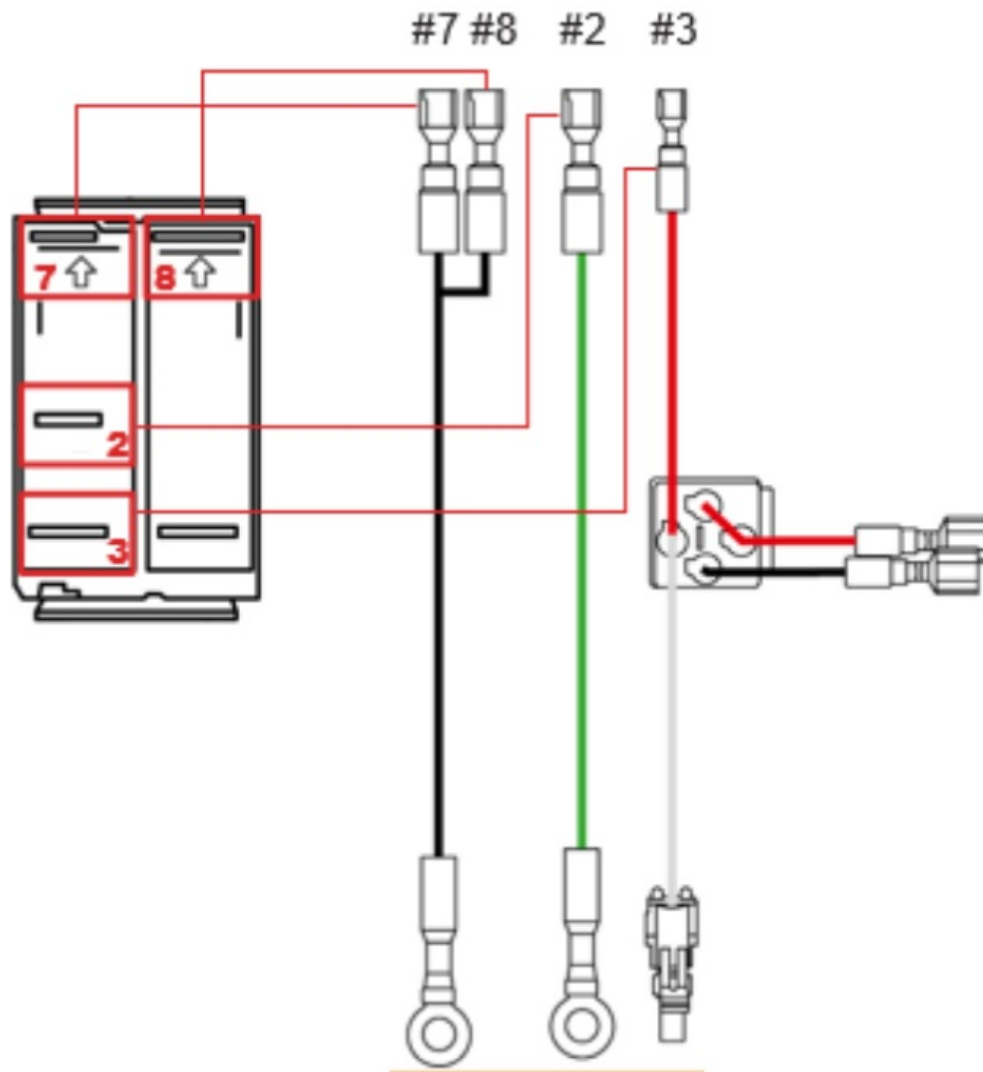


HOOK UP ROCKER SWITCH

- Grab the red spade connector on the Work Light Harness, the two black spade connectors from the Battery Negative Harness, and the green spade connector from the Battery Positive Harness and bundle all four spade connectors together. Route all four spades to the open rocker switch location referenced in step 1.i. [SEE FIGURES 5A-5F] NOTE: Be sure to keep all wiring away from hot or moving components



- Reference diagram below to connect each spade connector to the appropriate spade terminal on the backside of the rocker switch.



- Plug in main ground spade connector to PIN #7 (BLACK WIRE)
- Plug in ground jumper spade connector to PIN #8 (BLACK WIRE)
- Plug in power (green spade connector) to PIN #2 (GREEN WIRE)
- Plug in the red spade connector on the Work Light Harness to PIN #3 (RED WIRE)

TIDY UP YOUR MACHINE

1. Go over all your wiring and secure it to the different frame tubes and OEM harnesses.
NOTE: Stay away from hot or moving components.
2. Once all of your wiring is secured with the help of the zip ties, cut all the excess zip ties using side cutter pliers.
3. With your wiring neatly routed and secured to the Mule, reverse steps 1.i. – 1.viii. to reinstall the different Mule components.

WHY RAVEK

Stock UTVs don't come with enough storage, lighting, comfort, and protection. That's why we started RAVEK. We live to design, manufacture, and test innovative SxS upgrades that elevate the riding experience. Here's what you can expect from us:

- Durable products built to last (100% lifetime guarantee)
- UTV upgrades thoughtfully designed & tested by riders
- Outstanding installation support (videos & USA customer service)
- Constant flow of epic riding content (check out our social media)

We're confident your RAVEK product will earn its place on your machine. Please call or e-mail us if we can help.


- Harry & Ricky (Brothers & Owners)

MESSAGE FROM THE DESIGNER

When I designed the UTV Multi-function Tail Light, I thought about all the aspects a UTV rider needs: added visibility, sleek look, and easy installation. This product checks all the boxes, which is why I love it. It makes your machine look meaner and makes you and your ride crew safe at night on the trails.



Documents / Resources

	<p>RAVEK 2015 Plus Plug and Play Multi Function Tail Light [pdf] Installation Guide</p> <p>2015 Plus Plug and Play Multi Function Tail Light, 2015 Plus, Plug and Play Multi Function Tail Light, Multi Function Tail Light, Function Tail Light, Tail Light</p>
---	--

References

- [User Manual](#)

📁 RAVEK

💡 2015 Plus, 2015 Plus Plug and Play Multi Function Tail Light, Function Tail Light, Multi Function Tail Light, Plug and Play Multi Function Tail Light, RAVEK, Tail Light

Leave a comment

Your email address will not be published. Required fields are marked *

Comment *

Name

Email

Website

☐ Save my name, email, and website in this browser for the next time I comment.

Post Comment

Search:

e.g. whirlpool wrf535swhz

Search

This website is an independent publication and is neither affiliated with nor endorsed by any of the trademark owners. The "Bluetooth®" word mark and logos are registered trademarks owned by Bluetooth SIG, Inc. The "Wi-Fi®" word mark and logos are registered trademarks owned by the Wi-Fi Alliance. Any use of these marks on this website does not imply any affiliation with or endorsement.