

Raspberry Pi CM4 Smart Home Hub Instructions

[Home](#) » [Raspberry Pi](#) » Raspberry Pi CM4 Smart Home Hub Instructions 

Contents

- [1 Raspberry Pi CM4 Smart Home Hub](#)
- [2 Product Information](#)
- [3 Product Features](#)
- [4 Product Usage Instructions](#)
- [5 INSTRUCTIONS](#)
- [6 INSTALLATION](#)
- [7 Documents / Resources](#)
 - [7.1 References](#)

Raspberry Pi

Raspberry Pi CM4 Smart Home Hub



Product Information

The product is a Kit Edition of the Home Assistant system. It allows users to set up a smart home automation system using the provided components.

Product Features

- Easy setup and installation
- Integration with various smart home devices
- Control and automation through the Home Assistant app
- Access and control from a computer using the browser

Product Usage Instructions

• Step 1: Connect the Ethernet cable

Connect one end of the Ethernet cable to the designated port on the Home Assistant device, and the other end to an available Ethernet port on your router or network switch.

• Step 2: Connect the power cable

Plug one end of the power cable into the power input of the Home Assistant device, and the other end into a power outlet.

• Step 3: Download the Home Assistant app or browse on your computer

To download the Home Assistant app, visit your device's app store and search for "Home Assistant".

Alternatively, you can access the Home Assistant system by opening a web browser on your computer and entering the following URL: <http://homeassistant.local:8123>

For more detailed information and setup instructions, please refer to the official website: <https://yellow.home-assistant.io>

Quick Start Guide – v2.0 – 20230921

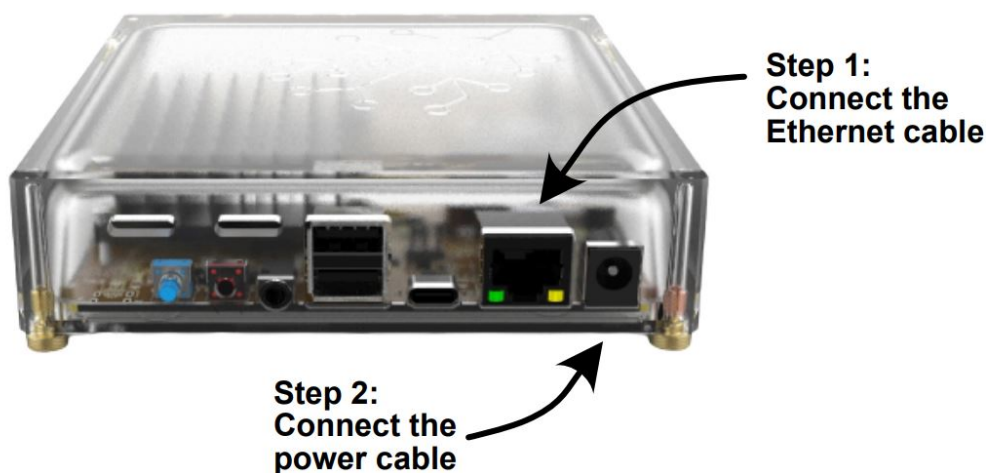
INSTRUCTIONS

• Step 1:

Connect the Ethernet cable

• Step 2:

Connect the power cable



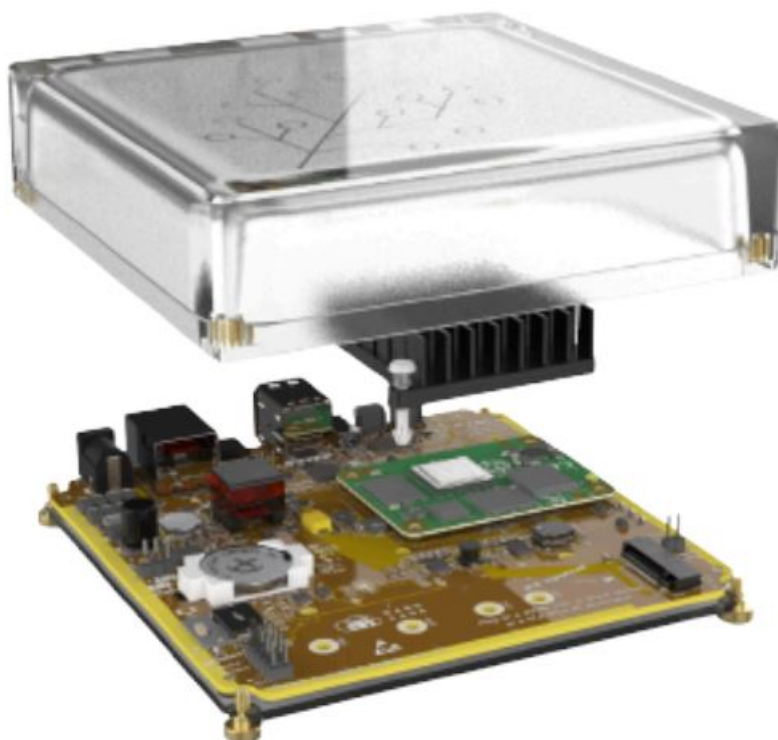
• Step 3:

Download the Home Assistant app



- Or, browse on your computer at <http://homeassistant.local:8123>

INSTALLATION




Setup Guide



For more information and setup instructions, visit yellow.home-assistant.io

Documents / Resources

	<p>Raspberry Pi CM4 Smart Home Hub [pdf] Instructions CM4, CM4 Smart Home Hub, Smart Home Hub, Home Hub, Hub</p>
---	--

References

- [🌐 Getting Started – Home Assistant Yellow](#)

Manuals+.