



Raritan QSG-CCVirtual-v11.5.0-A Command Center Secure Gateway User Guide

[Home](#) » [Raritan](#) » Raritan QSG-CCVirtual-v11.5.0-A Command Center Secure Gateway User Guide 

Contents

- [1 Raritan QSG-CCVirtual-v11.5.0-A Command Center Secure Gateway User Guide](#)
- [2 Quick Setup Guide](#)
- [3 Download Installation Files](#)
- [4 Requirements](#)
- [5 Install CommandCenter Secure Gateway on VMware ESXi](#)
- [6 Requirements](#)
- [7 Install CC-SG on Hyper-V](#)
- [8 Log in to Diagnostic Console to Set CC-SG IP Address](#)
- [9 Default CC-SG Settings](#)
- [10 Log in to CC-SG](#)
- [11 Get Your License](#)
- [12 Install and Check Out Your License](#)
- [13 Additional Information](#)
- [14 Read More About This Manual & Download PDF:](#)
- [15 Documents / Resources](#)
 - [15.1 References](#)

Raritan QSG-CCVirtual-v11.5.0-A Command Center Secure Gateway User Guide



Quick Setup Guide

Virtual Appliance – VMware, HyperV CommandCenter Secure Gateway

For additional information on any aspect of CommandCenter Secure Gateway, see CommandCenter Secure Gateway help, which can be accessed from the [Product Support](#) section of Raritan's website. This installation includes new deployments of the virtual CC-SG appliance on VMware, and HyperV virtual machines.

Download Installation Files

Log in to [raritan.com](http://www.raritan.com) to access the installation files. See [Get Your License](#) (on page 7) for details. <http://www.raritan.com/support/CommandCenter-Secure-Gateway>.

The installation files are packaged in a .ZIP file. Download the .ZIP file for your virtual environment.

- VMware
- HyperV

Deploying CC-SG on VMware

Requirements

1. ESXi 5/6.7/7.0 to deploy the CommandCenter Secure Gateway virtual appliance
 - Must have a datastore with 40GB minimum available
 - Must have at least 4GB memory available
 - 2 physical NICs in the (ESXi networking refers to these as “vmnic”).
 - A high availability cluster with access to shared storage is Fault tolerance may also be used. See CC-SG Admin Help “Using VMware High Availability or Fault Tolerance with a CC-SG Virtual Appliance”.
2. Client computer running vSphere Client 5, or vSphere web client 6.7/7.0.
3. The virtual appliance .OVF file, which is available at <http://www.raritan.com/support/commandcenter-secure-gateway>. See Download Installation Files for
 - CommandCenter Secure Gateway Virtual Appliance link: You must log in to the Raritan Software License Key Management site to view this See Get Your License.

Install CommandCenter Secure Gateway on VMware ESXi

1. Connect to the ESXi from your client computer by launching the URL “https://Hostname” or “https://IP” of the
2. Log in as a user that has permission to create, start, and stop virtual
3. Choose File > Deploy OVF
4. Select Deploy From File then click Browse to go to the directory where you unzipped the Select the .OVF file. Click Next.
5. Details about the virtual machine that will be created You can change the default name of the virtual machine. Click Next.
6. Select the inventory Click Next.
7. Select the Host where you want to deploy the CommandCenter Secure A host that is part of a high availability cluster is recommended for failover protection. Click Next.

8. If you selected a cluster, select the specific Click Next.
9. Choose the datastore where all files will be Make sure the datastore has 40GB free. Click Next.

Note: Datastore availability is critical for proper and reliable operation. The datastore should be highly available with redundant network access and routine backup.

10. Choose the network your CC-SG is being deployed Click Next.
11. View the summary then click Wait several minutes while the virtual machine is created.
12. Power on the virtual machine and launch the For next steps, go to [Log in to Diagnostic Console to Set CC-SG IP Address](#) (on page 6).

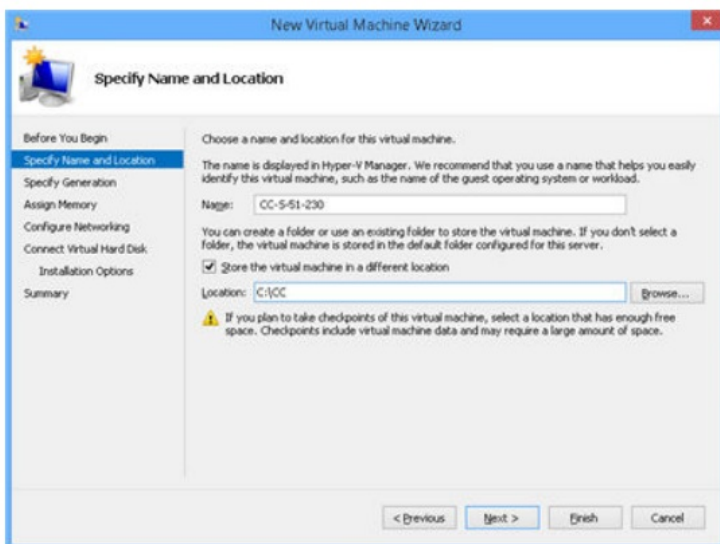
Deploying CC-SG on Hyper-V

Requirements

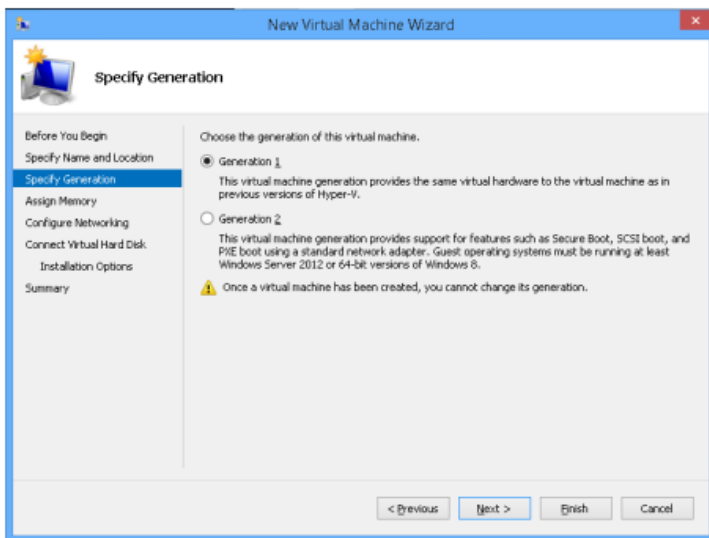
- Hyper-V feature is enabled on a Windows 2019/2016/2012/10
- Hyper-V Manager can be

Install CC-SG on Hyper-V

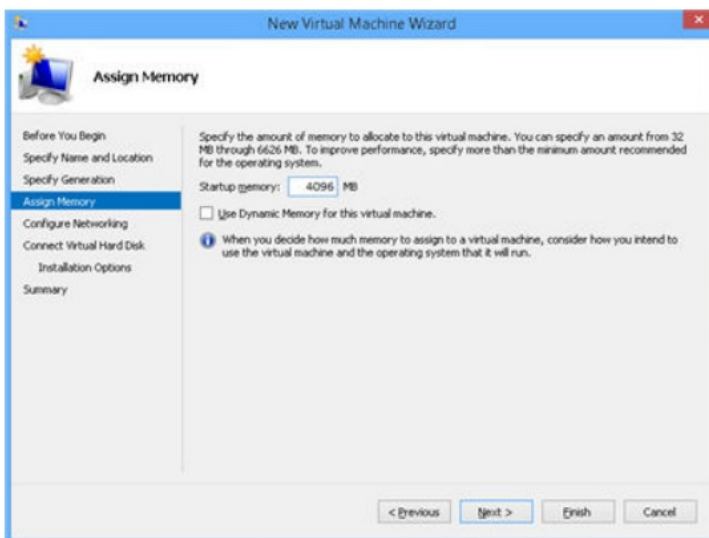
1. Extract the VHDF file from the CC-SG installation zip
2. In Hyper-V Manager, make sure your local machine is selected in the left panel, then choose Action > New > Virtual .. to open the New Virtual Machine wizard.
3. In the Before you Begin page, click
4. Enter a name for the VM, and choose a location to store the Click Next.



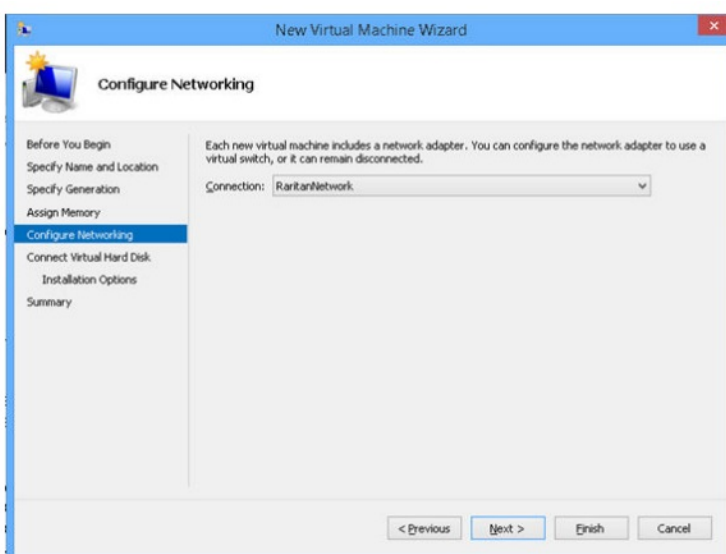
5. In the Specify Generation page, select Generation 1 CC-SG does not support Generation 2. Click Next.



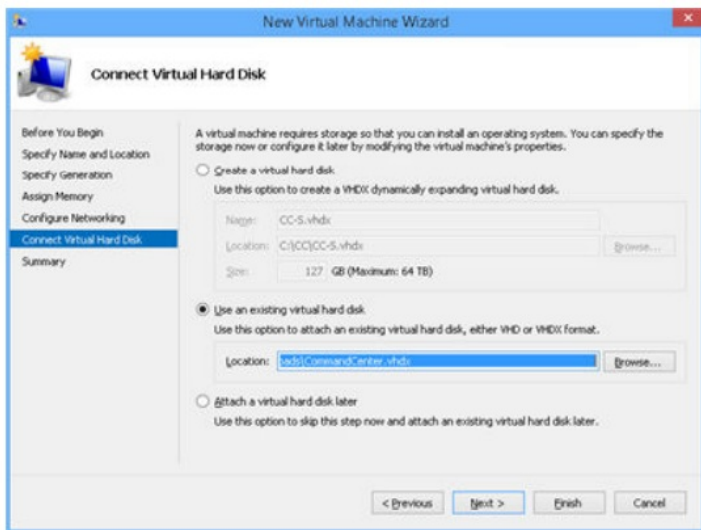
6. In the Assign Memory page, change the Startup Memory to 4GB (4096MB). Make sure that “Use Dynamic Memory for this virtual machine” is NOT Click Next.



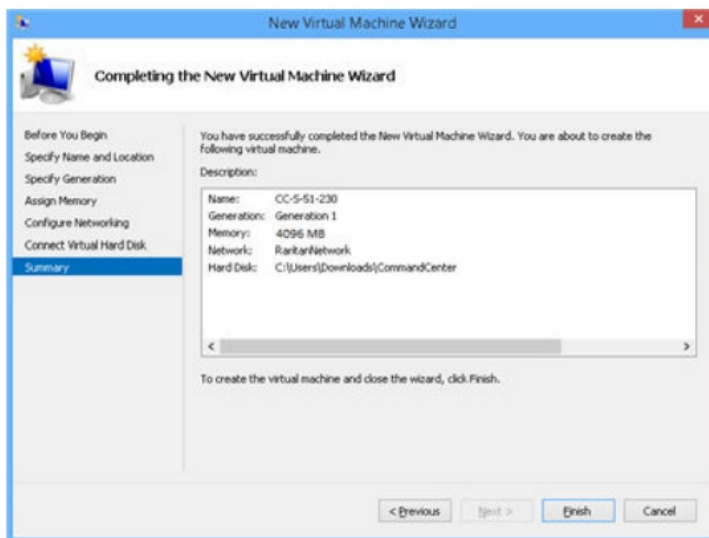
7. In the Configure Networking page, select the network configuration in your client Click Next.



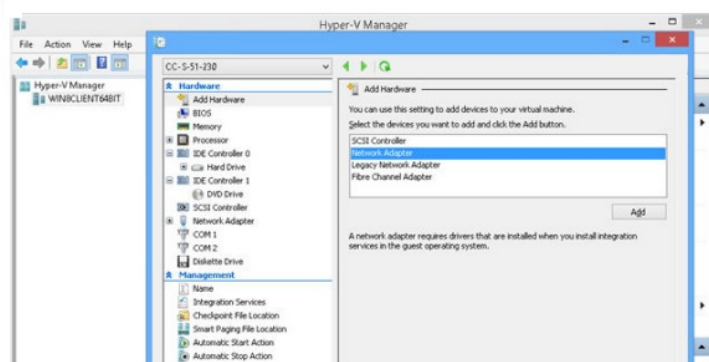
8. In the Connect Virtual Hard Disk page, select “Use an existing virtual hard disk”, then click Browse to select the .VHDX file extracted earlier. Click



9. A summary of the VM Click Finish.



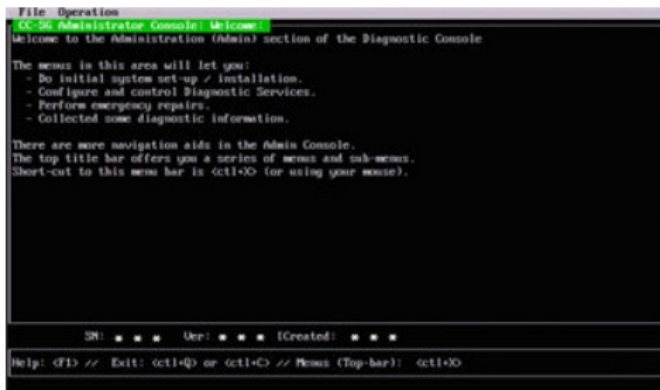
10. Select the newly created VM, then click Settings and add another



11. Start the new VM, and launch the For next steps, go to [Log in to Diagnostic Console to Set CC-SG IP Address](#) (on page 6).

Log in to Diagnostic Console to Set CC-SG IP Address

1. Log in as *admin/raritan*. Usernames and passwords are case-sensitive.
2. You will be prompted to change the local console
 1. Type the default password (*raritan*)
 2. Type and then confirm the new



3. Choose Operation > Network Interfaces > Network Interface The Administrator Console appears.
4. In the Configuration field, select DHCP or If you select Static, type a static IP address. If needed, specify DNS servers, netmask, and gateway address.
5. Select
6. Press CTRL+X when you see the Welcome screen.

Default CC-SG Settings

IP Address: DHCP
Subnet Mask: 255.255.255.0

Log in to CC-SG

1. Launch a supported browser and type the URL of the CC-SG: `https://<IP address>/admin`.
For example, `https://192.168.0.192/admin`.

Note: The default setting for browser connections is HTTPS/SSL encrypted.

2. When the security alert window appears, accept the
3. You will be warned if you are using an unsupported Java Runtime Environment Follow the prompts to either download the correct version, or continue. The Login window appears.

Note: The client version is visible on the login page.

4. Type the default username (*admin*) and password (*raritan*) and click

The CC-SG Admin Client opens. You are prompted to change your password. Strong passwords are enforced for admin.

Get Your License

1. The license administrator designated at time of purchase will receive an email from Raritan Licensing Portal when licenses are Use the link in the email, or go directly to www.raritan.com/support. Create a user account and login, then click "Visit The License Key Management Tool". The licensing account information page opens.
2. Click the Product License The licenses you purchased display in a list. You may have only 1 license, or multiple licenses.
3. To get each license, click Create next to the item in the If you have more than 1 license, such as a base license of CCSG128-VA and an add-on license of CCL-1024, create the base license first.

4. Enter the Host ID of the virtual machine where you installed the CC-SG virtual You can copy the Host ID from the Administration > License Management page in the Admin Client, in the CC-SG Host ID field at the top of the page.
 - Sample Host ID: 98A77180737E600FVP9FF1707ED0CE2154CF7FD6
5. Click Create The details you entered display in a pop-up. Verify that your Host ID is correct. For clusters, verify both Host IDs.

Warning: Make sure the Host ID is correct! A license created with an incorrect Host ID is not valid and requires Raritan Technical Support's help to fix

2. Click The license file is created.
3. Click Download Now and save the license

Install and Check Out Your License

1. In the CC-SG Admin Client, choose Administration > License
2. Click Add
3. Read the license agreement and scroll down the whole text area, then select the I Agree
4. Click Browse, then select the license file and click You must check out licenses to activate the features.
5. Select a license from the list then click Check Check out all the licenses you want to activate.

Additional Information


For more information about CommandCenter Secure Gateway and the entire Raritan product line, see Raritan's website (www.raritan.com). For technical issues, contact Raritan Technical Support. See the Contact Support page in the Support section on Raritan's website for technical support contact information worldwide.

Raritan's products use code licensed under the GPL and LGPL. You can request a copy of the open source code.

For details, see the Open Source Software Statement at ([https:// www.raritan.com/about/legal-statements/open-source-software-statement/](https://www.raritan.com/about/legal-statements/open-source-software-statement/)) on Raritan's website.

Read More About This Manual & Download PDF:

Documents / Resources

	<p><u>Raritan QSG-CCVirtual-v11.5.0-A Command Center Secure Gateway</u> [pdf] User Guide QSG-CCVirtual-v11.5.0-A Command Center Secure Gateway, QSG-CCVirtual-v11.5.0-A, Com mand Center Secure Gateway, Center Secure Gateway, Secure Gateway, Gateway</p>
---	---

References

- [User Manual](#)

[Manuals+](#), [Privacy Policy](#)

This website is an independent publication and is neither affiliated with nor endorsed by any of the trademark owners. The "Bluetooth®" word mark and logos are registered trademarks owned by Bluetooth SIG, Inc. The "Wi-Fi®" word mark and logos are registered trademarks owned by the Wi-Fi Alliance. Any use of these marks on this website does not imply any affiliation with or endorsement.