



Raritan E1 CommandCenter Secure Gateway User Guide

[Home](#) » [Raritan](#) » Raritan E1 CommandCenter Secure Gateway User Guide 



CommandCenter Secure Gateway E1 Models QUICK SETUP GUIDE

Thank you for your purchase of the CommandCenter Secure Gateway™, Raritan's management software platform engineered to consolidate secure access and control of IT devices. This Quick Setup Guide explains how to install and configure the CommandCenter Secure Gateway.

For details on using the CommandCenter Secure Gateway, access online help from the application or the Support page <http://www.raritan.com/support> on the Raritan website.

CC-SG E1 Hardware Models

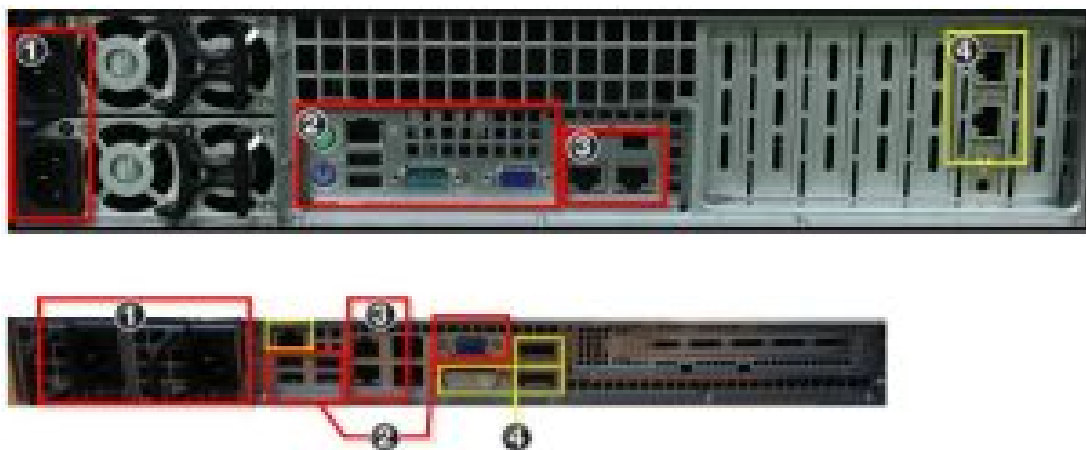


Diagram Key

1. Power
2. KVM Ports
3. LAN Ports
4. Extra ports
5. Do not use.

Contents

- [1 Unpack CC-SG](#)
- [2 Rack-mount CC-SG](#)
- [3 Install Inner Rails onto CC-SG Unit](#)
- [4 Install Outer Rails onto Rack](#)
- [5 Install CC-SG into the Rack](#)
- [6 Connect Cables](#)
- [7 Log in to Local Console to Set CC-SG IP Address](#)
- [8 Get Your License](#)
- [9 Log in to CC-SG](#)
- [10 Install and Check Out Your License](#)
- [11 Next Steps](#)
- [12 Documents / Resources](#)
- [13 Related Posts](#)

Unpack CC-SG

With your shipment, you should receive:

- (1) CommandCenter Secure Gateway E1 unit
- (1) CommandCenter Secure Gateway E1 front bezel
- (1) Rackmount kit
- (2) Power supply cord
- (1) CAT 5 network cable
- (1) Printed Quick Setup Guide
- (1) Registration and Warranty papers

Determine Rack Location

Decide on a location in the rack for CC-SG, in a clean, dust-free, well-ventilated area. Avoid areas where heat, electrical noise, and electromagnetic fields are generated and place it near a grounded power outlet.

Rack-mount CC-SG

Before rack-mounting CC-SG, unplug all power cords and remove all external cables and devices.

- The rack-mount kit contains:
- 2 pairs of rack rails

Each pair consists of two sections: an inner rail that attaches to the CC-SG unit, and an outer rail that attaches to the rack. A sliding rail guide is positioned between the inner and outer rails. The sliding rail guide should remain attached to the outer rail.

- 1 pair of short front brackets
- 1 pair of long rear brackets

- Short screws, Long screws
- Washers

Install Inner Rails onto CC-SG Unit

1. Slide the inner rail out from the outer rail as far as it will go. Press the locking tab to release the inner rail from the outer rail and then pull the inner rail completely out. Do this for both pairs of rack rails.
2. There are five holes on each inner rail that correspond to the five rail hooks on each side of the CC-SG unit. Align each inner rail's holes with the rail hooks, and then press each rail against the unit to attach it.
3. Slide each rail toward the front of the unit until you hear a click.
4. Attach the inner rails to the CC-SG unit with short screws.

Install Outer Rails onto Rack

1. The outer rails attach to the rack. The outer rails will fit racks that are 28-32 inches deep.
2. Attach the short front brackets to each outer rail with short screws. Note the up/Front indication on the brackets when attaching them.
3. Slide each long rear bracket into the opposite end of each outer rail. Attach the long rear brackets to the outer rails with short screws. Note the up/Rear indication on the brackets when attaching them.
4. Adjust the entire rail unit length to fit the rack depth.
5. Attach each bracketed end of the outer rail to the rack with washers and long screws.

Install CC-SG into the Rack

Once the rails are attached to both the CC-SG unit and the rack, install CC-SG into the rack.

1. Fully extend the rack rails, and then line up the rear of the inner rails with the front of the rack rails.
2. Slide the CC-SG unit into the rack until you hear a click. You may have to depress the locking tabs when inserting the CC-SG unit into the rack.

Locking Tabs Information

Both inner rails have a locking tab:

- To lock the CC-SG unit into place when pushed fully into the rack.
- To lock the CC-SG unit into place when extended from the rack.

Connect Cables

Once the CC-SG unit is installed into the rack, you can connect cables. See the diagrams on page 1.

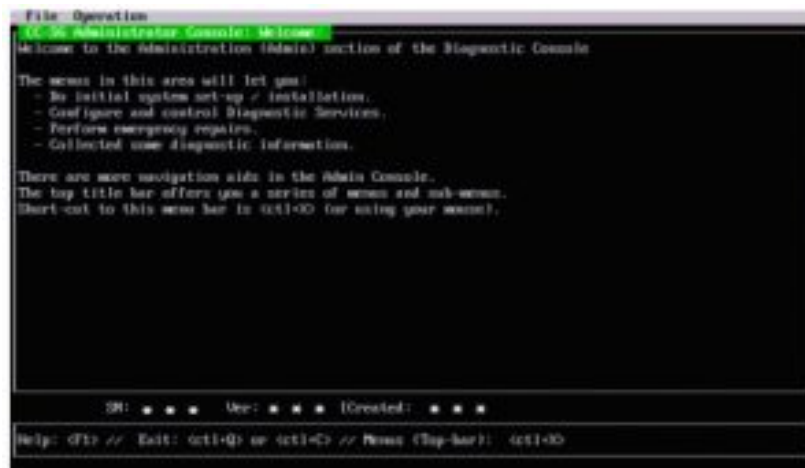
1. Connect the CAT 5 network LAN cable to the LAN 1 port on the rear panel of the CC-SG unit. It is strongly recommended to connect a second CAT 5 network LAN cable to the LAN 2 port.
Connect the other end of each CAT 5 cable to the network.
2. Attach the 2 included AC power cords to the power ports on the rear panel of the CC-SG unit. Plug the other

ends of the AC power cords into independent UPS-protected outlets.

3. Connect KVM cables to the corresponding ports on the rear panel of the CC-SG unit.

Log in to Local Console to Set CC-SG IP Address

1. Power ON CC-SG by pressing the POWER button on the front CC-SG unit.
2. Attach the front bezel by snapping it onto the front of the CC-SG unit.
3. Log in as admin/raritan. Usernames and passwords are case-sensitive.
4. You will be prompted to change the local console password.
 - a. Type the default password (raritan) again.
 - b. Type and then confirm the new password.
5. Press CTRL+X when you see the Welcome screen.



6. Choose Operation > Network Interfaces > Network Interface Config. The Administrator Console appears.
7. In the Configuration field, select DHCP or Static. If you select Static, type a static IP address. If needed, specify DNS servers, netmask, and gateway address.
8. Select Save.

Default CC-SG Settings

IP Address: 192.168.0.192

Subnet Mask: 255.255.255.0

Username/Password: admin/raritan

Get Your License

1. The license administrator designated at time of purchase will receive an email from Raritan Licensing Portal when licenses are available. Use the link in the email, or go directly to www.raritan.com/support. Create a user account and log in, then click “Visit The License Key Management Tool”. The licensing account information page opens.
2. Click the Product License tab. The licenses you purchased display in a list. You may have only 1 license or multiple licenses.
3. To get each license, click Create next to the item in the list, then enter the CommandCenter Secure Gateway Host ID. For clusters, enter both Host IDs. You can copy and paste the Host ID from the License Management page. See Find Your Host ID (on page 3).
4. Click Create License. The details you entered displayed in a pop-up. Verify that your Host ID is correct. For clusters, verify both Host IDs.

Warning: Make sure the Host ID is correct! A license created with an incorrect Host ID is not valid and requires Raritan Technical Support's help to fix.

5. Click OK. The license file is created.
6. Click Download Now and save the license file.

Log in to CC-SG

Once CC-SG has restarted, you can log in to CC-SG from a remote client.

1. Launch a supported browser and type the URL of the CC-SG: <https://<IP address>/admin>.

For example, <https://192.168.0.192/admin>.

Note: The default setting for browser connections is HTTPS/SSL encrypted.

2. When the security alert window appears, accept the connection.
3. You will be warned if you are using an unsupported Java Runtime Environment version. Follow the prompts to either download the correct version, or continue. The Login window appears.
4. Type the default username (admin) and password (Raritan) and click Login.
The CC-SG Admin Client opens. You are prompted to change your password. Strong passwords are enforced for the admin.

Find Your Host ID

1. Choose Administration > License Management.
2. The Host ID of the CommandCenter Secure Gateway unit you are logged into displays in the License Management page. You can copy and paste the Host ID.

Install and Check Out Your License

1. In the CC-SG Admin Client, choose Administration > License Management.
2. Click Add License.
3. Read the license agreement and scroll down the whole text area, then select the I Agree on checkbox.
4. Click Browse, then select the license file and click OK.
5. If you have multiple licenses, such as a “base” appliance license plus Add-On license for additional nodes or WS-API, you must upload the physical appliance license first. Click Browse, then select the license file to upload.
6. Click Open. The license appears in the list. Repeat for Add-On licenses.
You must check out licenses to activate the features.
7. Select a license from the list then click Check Out. Check out all the licenses you want to activate.

Next Steps

See the CommandCenter Secure Gateway online help at <https://www.raritan.com/support/product/commandcenter-secure-gateway>.

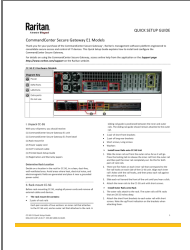
Additional Information

For more information about CommandCenter Secure Gateway and the entire Raritan product line, see Raritan's

website (www.raritan.com). For technical issues, contact Raritan Technical Support. See the Contact Support page in the Support section on Raritan’s website for technical support contact information worldwide. Raritan’s products use codes licensed under the GPL and LGPL. You can request a copy of the open-source code. For details, see the Open Source Software Statement at (<http://www.raritan.com/about/legal-statements/open-source-software-statement/>) on Raritan’s website.

CC-SG E1 Quick Setup Guide
QSG-CCE1-0P-v9.0-E •255-80-5400-01-RoHS

Documents / Resources

	Raritan E1 CommandCenter Secure Gateway [pdf] User Guide E1, CommandCenter Secure Gateway
---	--