



Raritan CommandCenter Secure Gateway V1 Installation Guide

[Home](#) » [Raritan](#) » Raritan CommandCenter Secure Gateway V1 Installation Guide 



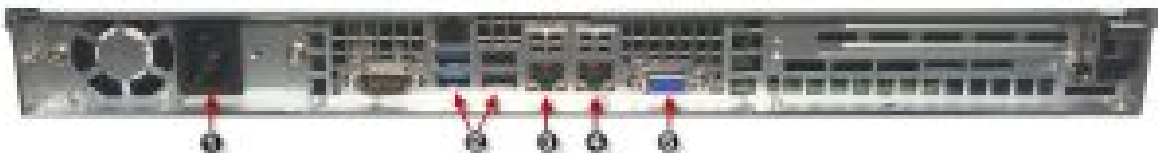
CommandCenter Secure Gateway V1 Models QUICK SETUP GUIDE



Thank you for your purchase of the CommandCenter Secure Gateway™, Raritan's management software platform engineered to consolidate secure access and control of IT devices. This Quick Setup Guide explains how to install and configure the CommandCenter Secure Gateway.

For details on using the CommandCenter Secure Gateway, access online help from the application or the Support page <http://www.raritan.com/support> on the Raritan website.

1.



Power

2. USB Ports
3. LAN 1
4. LAN 2
5. KVM Port

Contents

- [1 Unpack CC-SG](#)
- [2 Rack-mount CC-SG](#)
- [3 Connect Cables](#)
- [4 Log in to Local Console to Set CC-SG IP Address](#)
- [5 Get Your License](#)
- [6 Log in to CC-SG](#)
- [7 Install and Check Out Your License](#)
- [8 Next Steps](#)
- [9 Documents / Resources](#)
- [10 Related Posts](#)

Unpack CC-SG

With your shipment, you should receive:

- (1) CommandCenter Secure Gateway V1 unit
- (1) CommandCenter Secure Gateway V1 front bezel
- (1) Rackmount kit
- (1) Power supply cord
- (1) CAT 5 network cable
- (1) Printed Quick Setup Guide
- (1) Registration and Warranty papers

Determine Rack Location

Decide on a location in the rack for CC-SG, in a clean, dust-free, well-ventilated area. Avoid areas where heat, electrical noise, and electromagnetic fields are generated and place them near a grounded power outlet.

Rack-mount CC-SG

Identify Rail Sections

Your rack mount kit contains two rack rail assemblies. Each assembly has two sections: an inner fixed chassis rail (A) that secures to the unit and an outer fixed rack rail (B) that secures to the rail brackets. A sliding rail guide sandwiched between the two should remain attached to the outer fixed rack rail. The A and B rails must be detached from each other for installation. To remove the inner fixed chassis rail (A), pull it out as far as possible until you hear a clicking sound when a locking tab emerges from inside the rail assembly and locks the inner rail. Depress the locking tab to pull the inner rail completely out. Do this for both rack rail assemblies.

Install the Chassis Rails

1. Position the inner fixed chassis rail sections you just removed along one side of the chassis; ensure the five screw holes line up.
2. Screw the rail securely to the side of the chassis.
3. Repeat steps 1 and 2 for the other rail on the other side of the chassis. Attach rail brackets if installed into a Telco rack.

Install Rack Rails

1. Position the outer fixed rack rail/sliding rail guide assemblies at the desired location in the rack, keeping the sliding rail guide facing the inside of the rack.
2. Screw the assembly securely to the rack using the brackets provided.

3. Attach the other assembly to the other side of the rack, making sure that both are at the exact same height and with the rail guides facing inward. Ideally, two people should work on this together.

Install CC-SG into the Rack

Once the rails are attached to both the chassis and the rack, install CC-SG into the rack.

1. Line up the rear of the chassis rails with the front of the rack rails.
2. Slide the chassis rails into the rack rails, keeping the pressure even on both sides. You may have to depress the locking tabs when inserting. You should hear the locking tabs click when the unit is completely pushed in.

Locking Tabs

Both chassis rails have a locking tab that serves two functions:

- To lock CC-SG into place when installed and pushed fully into the rack (normal operating position).
- To lock CC-SG in place when extended from the rack, preventing the unit from falling out of the rack when pulled out for servicing.

Connect Cables

Once the CC-SG unit is installed into the rack, you can connect cables. See the diagrams on page 1.

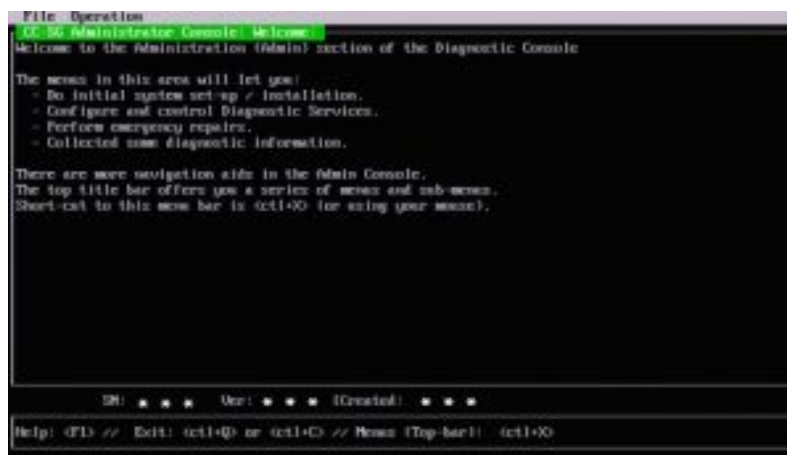
1. Connect the CAT 5 network LAN cable to the LAN 1 port on the rear panel of the CC-SG unit. Connect the CAT 5 cable to the network.

Optional: Connect a second CAT 5 network LAN cable to the LAN 2 port.

2. Attach the included AC power cord to the power port on the rear panel of the CC-SG unit. Plug into an AC power outlet.
3. Connect KVM cables to the corresponding ports on the rear panel of the CC-SG unit.

Log in to Local Console to Set CC-SG IP Address

1. Power ON CC-SG by pressing the POWER button on the front of the CC-SG unit.
2. Attach the front bezel by snapping it onto the front of the CC-SG unit.
3. Log in as admin/Raritan. Usernames and passwords are case-sensitive.
4. You will be prompted to change the local console password.
 - a. Type the default password (Raritan) again.
 - b. Type and then confirm the new password.
5. Press CTRL+X when you see the Welcome screen.



6. Choose Operation > Network Interfaces > Network Interface Config. The Administrator Console appears.
7. In the Configuration field, select DHCP or Static. If you select Static, type a static IP address. If needed, specify DNS servers, netmask, and gateway address.
8. Select Save.

Default CC-SG Settings

IP Address: 192.168.0.192

Subnet Mask: 255.255.255.0

Username/Password: admin/Raritan

Get Your License

1. The license administrator designated at the time of purchase will receive an email from Raritan Licensing Portal when licenses are available. Use the link in the email, or go directly to www.raritan.com/support. Create a user account and log in, then click “Visit The License Key Management Tool”. The licensing account information page opens.
2. Click the Product License tab. The licenses you purchased are displayed in a list. You may have only 1 license or multiple licenses.
3. To get each license, click Create next to the item in the list, then enter the CommandCenter Secure Gateway Host ID. For clusters, enter both Host IDs. You can copy and paste the Host ID from the License Management page. See Find Your Host ID (on page 3).
4. Click Create License. The details you entered are displayed in a pop-up. Verify that your Host ID is correct. For clusters, verify both Host IDs. Warning: Make sure the Host ID is correct! A license created with an incorrect Host ID is not valid and requires Raritan Technical Support’s help to fix it.
5. Click OK. The license file is created.
6. Click Download Now and save the license file.

Log in to CC-SG

Once CC-SG has restarted, you can log in to CC-SG from a remote client.

1. Launch a supported browser and type the URL of the CC-SG: <https://<IP address>/admin>.
For example, <https://192.168.0.192/admin>.
Note: The default setting for browser connections is HTTPS/SSL encrypted.
2. When the security alert window appears, accept the connection.
3. You will be warned if you are using an unsupported Java Runtime Environment version. Follow the prompts to either download the correct version, or continue. The Login window appears.
4. Type the default username (admin) and password (Raritan) and click Login.
The CC-SG Admin Client opens. You are prompted to change your password. Strong passwords are enforced for the admin.

Find Your Host ID

1. Choose Administration > License Management.
2. The Host ID of the CommandCenter Secure Gateway unit you are logged into displays in the License

Management page. You can copy and paste the Host ID.

Install and Check Out Your License

1. In the CC-SG Admin Client, choose Administration > License Management.
2. Click Add License.
3. Read the license agreement and scroll down the whole text area, then select the I Agree on the checkbox.
4. Click Browse, then select the license file and click OK.
5. If you have multiple licenses, such as a “base” appliance license plus Add-On license for additional nodes or WS-API, you must upload the physical appliance license first. Click Browse, then select the license file to upload.
6. Click Open. The license appears in the list. Repeat for Add-On licenses.
You must check out licenses to activate the features.
7. Select a license from the list then click Check Out. Check out all the licenses you want to activate.

Next Steps

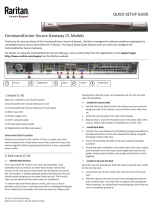
See the CommandCenter Secure Gateway online help at <https://www.raritan.com/support/product/commandcenter-secure-gateway>.

Additional Information

For more information about CommandCenter Secure Gateway and the entire Raritan product line, see Raritan’s website (www.raritan.com). For technical issues, contact Raritan Technical Support. See the Contact Support page in the Support section on Raritan’s website for technical support contact information worldwide. Raritan’s products use codes licensed under the GPL and LGPL. You can request a copy of the open-source code. For details, see the Open Source Software Statement at (<http://www.raritan.com/about/legal-statements/open-source-software-statement/>) on Raritan’s website.

CC-SG V1 Quick Setup Guide
QSG-CCV1-0V-v9.0-E , 255-80-5110-01-RoHS

Documents / Resources

	<p>Raritan CommandCenter Secure Gateway V1 [pdf] Installation Guide Raritan, CommandCenter, Secure, Gateway, V1</p>
---	---