



Raritan CommandCenter Secure Gateway Installation Guide

[Home](#) » [Raritan](#) » Raritan CommandCenter Secure Gateway Installation Guide



QUICK SETUP GUIDE VIRTUAL APPLIANCE – VMWARE, XEN, HYPERV

Contents [[hide](#)]

- [1 CommandCenter Secure Gateway](#)
 - [1.1 Download Installation Files](#)
 - [1.2 Deploying CC-SG on VMware](#)
- [2 Deploying CC-SG on XEN Virtual Server](#)
- [3 Deploying CC-SG on Hyper-V](#)
- [4 Additional Information](#)
- [5 Documents / Resources](#)
 - [5.1 References](#)
- [6 Related Posts](#)

CommandCenter Secure Gateway

This Quick Setup Guide explains how to install and configure the CommandCenter Secure Gateway. For additional information on any aspect of CommandCenter Secure Gateway, see CommandCenter Secure Gateway help, which can be accessed from the Product Support (<http://www.raritan.com/support>) section of Raritan's website.

This installation includes new deployments of the virtual CC-SG appliance on VMware, XEN, and HyperV virtual machines.

Download Installation Files

Log in to [raritan.com](http://www.raritan.com) to access the installation files. See Get Your License (on page 11) for details.
<http://www.raritan.com/support/CommandCenter-Secure-Gateway>.
The installation files are packaged in a . ZIP file. Download the . ZIP file for your virtual environment.

- VMware
- XEN
- HyperV

Deploying CC-SG on VMware

Requirements

1. ESXi 6.0/6.5/6.7 to deploy the CommandCenter Secure Gateway virtual appliance
 - Must have a datastore with 40GB minimum available
 - Must have at least 4GB memory available
 - 2 physical NICs in the server. (ESXi networking refers to these as “vmnic”.)
 - A high availability cluster with access to shared storage is recommended. Fault tolerance may also be used. See CC-SG Admin Help “Using VMware High Availability or Fault Tolerance with a CC-SG Virtual Appliance”.
2. A client computer running vSphere Client 6.0, or vSphere web client 6.5/6.7.
3. The virtual appliance.OVF file, which is available at <http://www.raritan.com/support/commandcenter-secure-gateway>. See Download Installation Files for details.
 - **CommandCenter Secure Gateway Virtual Appliance link:** You must log in to the Raritan Software License Key Management site to view this link. See Get Your License.

Install CommandCenter Secure Gateway on VMware ESXi 6.0

1. Connect to the ESXi 6.0 from your client computer using vSphere 6.0.
2. Log in as a user that has permission to create, start, and stop virtual machines.
3. Choose File > Deploy OVF Template.
4. Select Deploy From File then click Browse to go to the directory where you unzipped the files. Select the.OVF file. Click Next.
5. Details about the virtual machine that will be created are displayed. You can change the default name of the virtual machine. Click Next.
6. Select the inventory location. Click Next.
7. Select the Host where you want to deploy the CommandCenter Secure Gateway. A host that is part of a high availability cluster is recommended for failover protection. Click Next.
8. If you selected a cluster, select the specific host. Click Next.
9. Choose the datastore where all files will be stored. Make sure the datastore has 40GB free. Click Next.
Note: Datastore availability is critical for proper and reliable operation. The datastore should be highly available with redundant network access and routine backup.
10. Choose the network your CC-SG is being deployed on. Click Next.
11. View the summary then click Finish. Wait several minutes while the virtual machine is created.
12. Power on the virtual machine and launch the console. For the next steps, go to Log in to Diagnostic Console to Set CC-SG IP Address (on page 10).

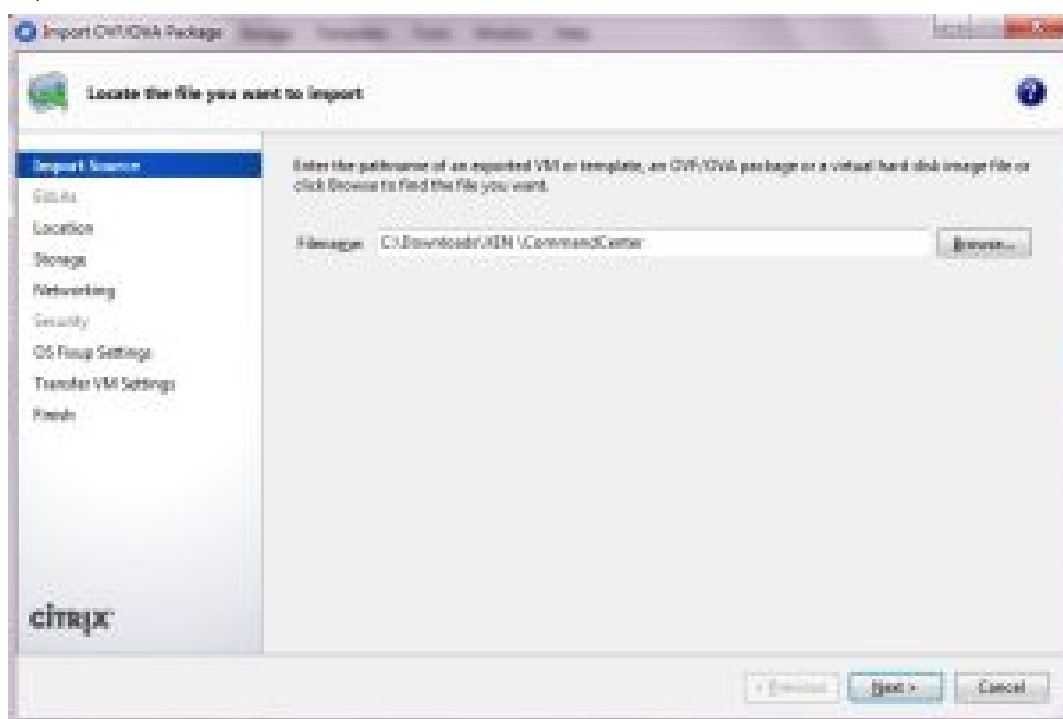
Deploying CC-SG on XEN Virtual Server

Requirements

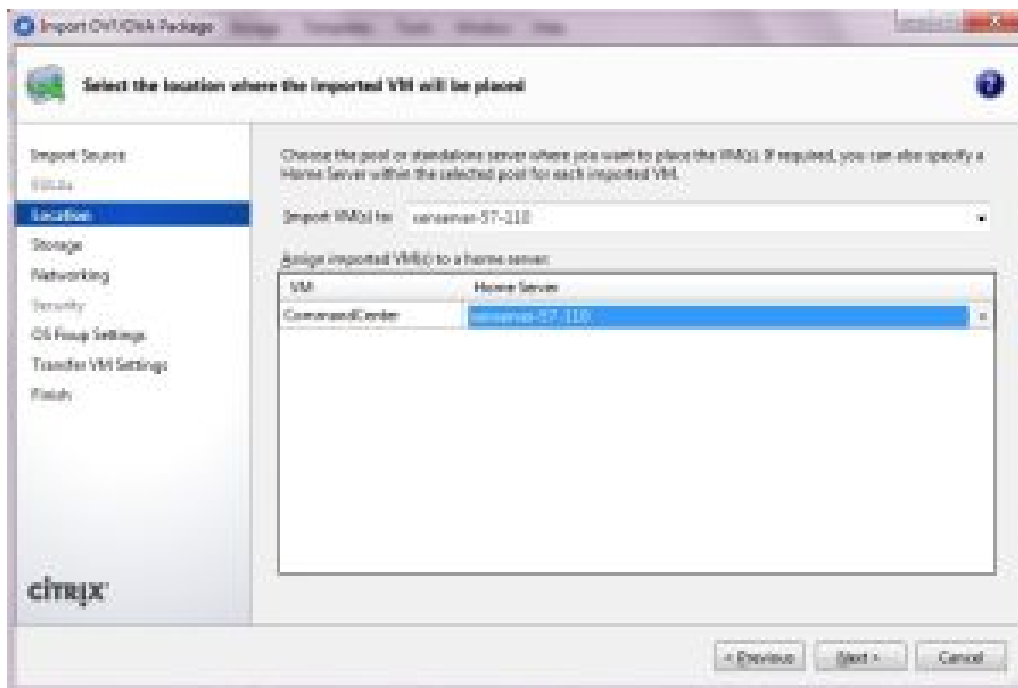
1. Xen server is running on a machine that supports hardware virtualization and is enabled in BIOS.
2. XenCenter Windows Management Console is running on a client machine that can access the XEN server.

Install CC-SG on a XEN Server

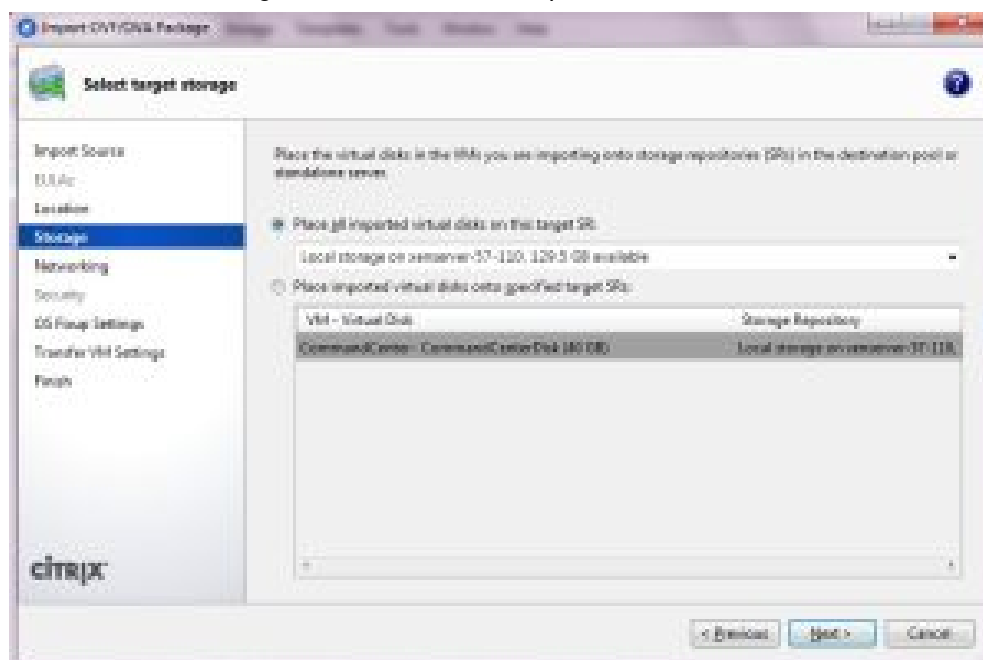
1. Extract the OVF and VHD files from the CC-SG release package to the client machine where XenCenter Windows Management Console is installed.
2. Launch XenCenter Windows Management Console.
3. If needed, add the installed Xen server to XenCenter.
4. Once the XEN server is added, right-click on the XEN server and choose “Import...”.
5. Click Browse, select the OVF file and click Next.



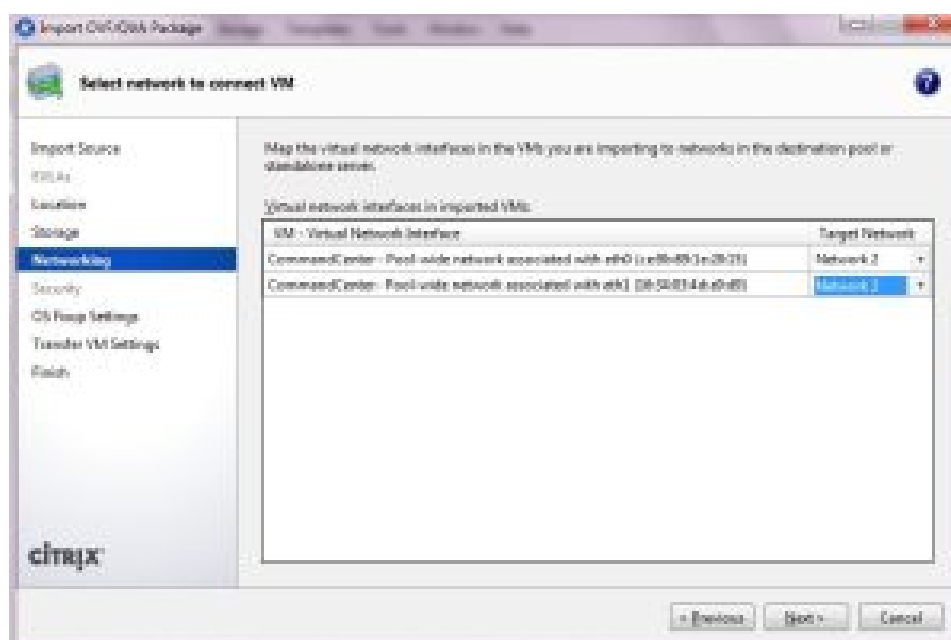
6. Select the XEN server as the location for the imported virtual machine.



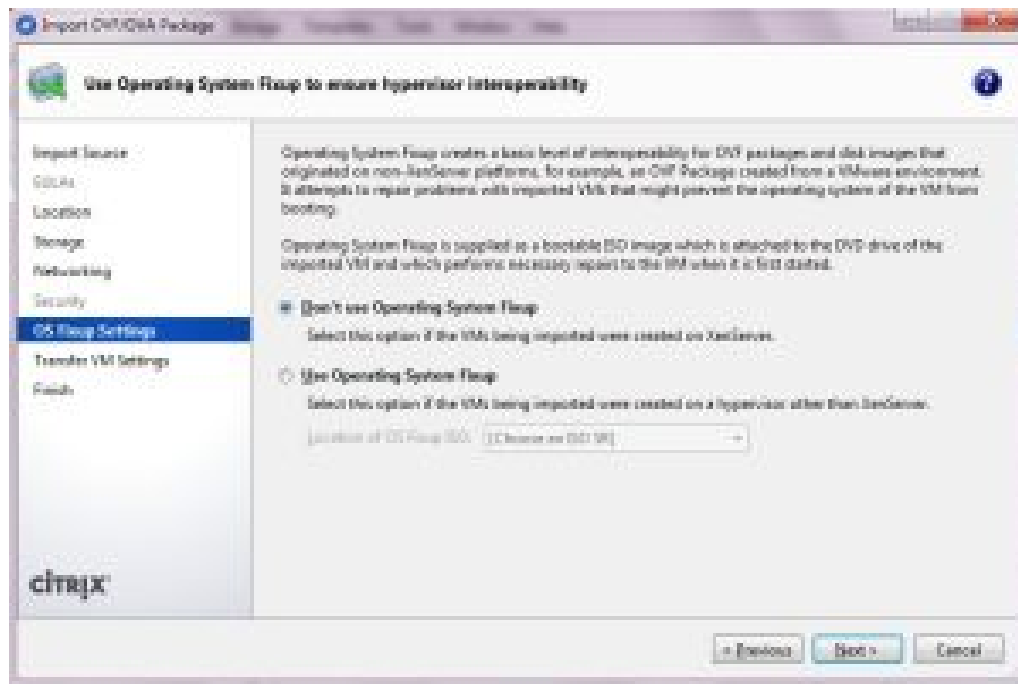
7. Specify the virtual disk. Local storage is shown in the example.



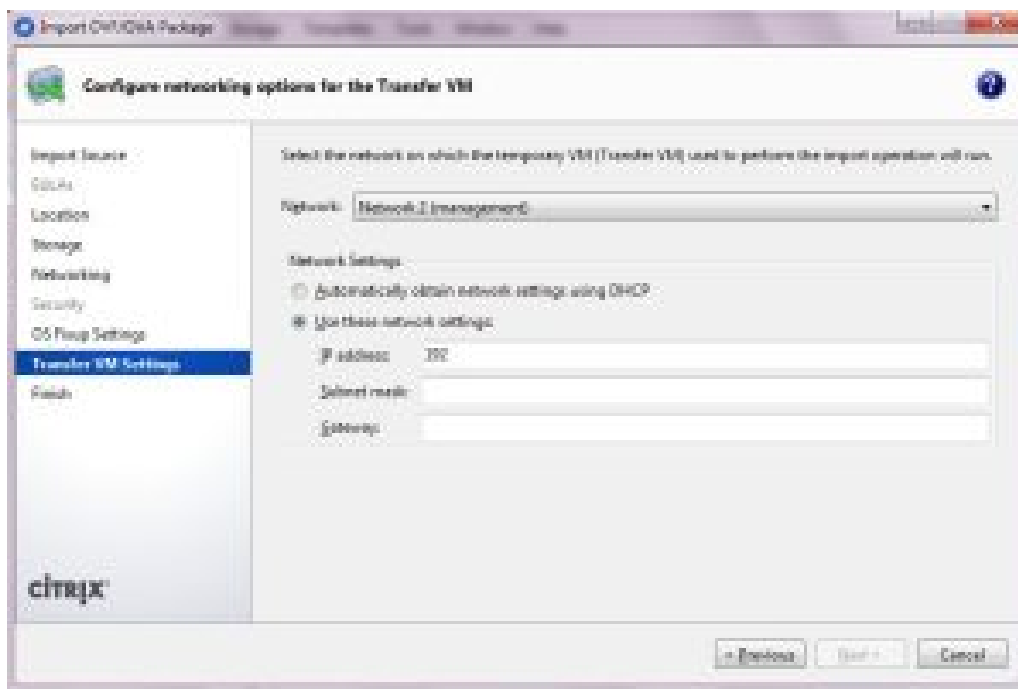
8. Choose the Network Connection for both the CC-SG interfaces.

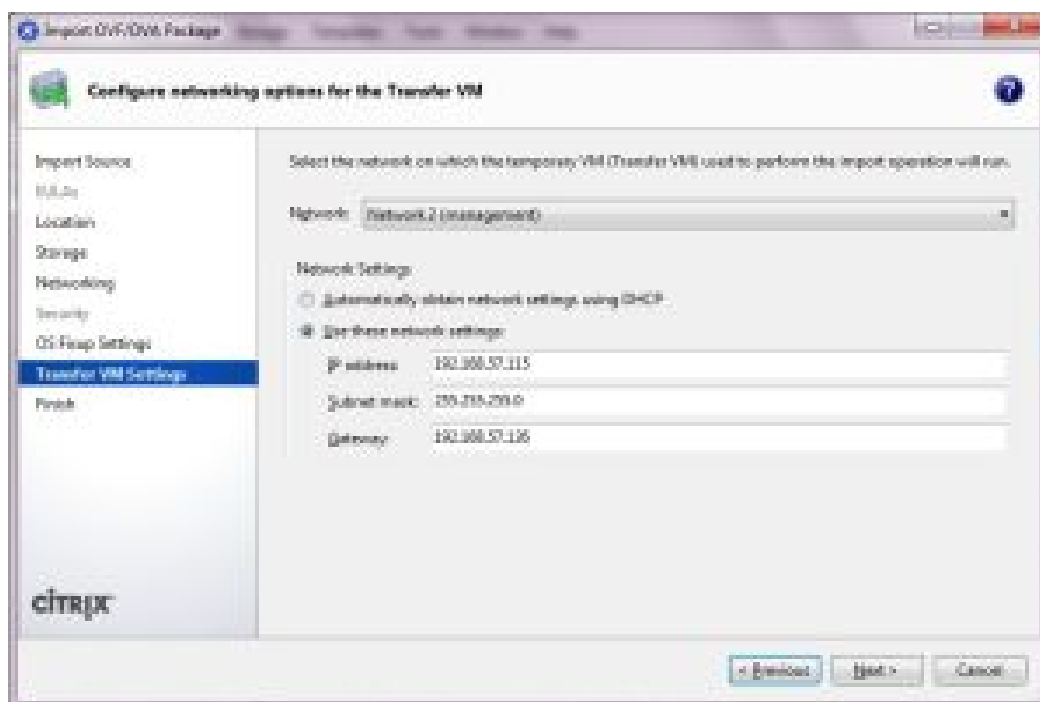


9. Use the default option “Don’t use Operating System Fixup”. The CC-SG VM was created on the XEN server.

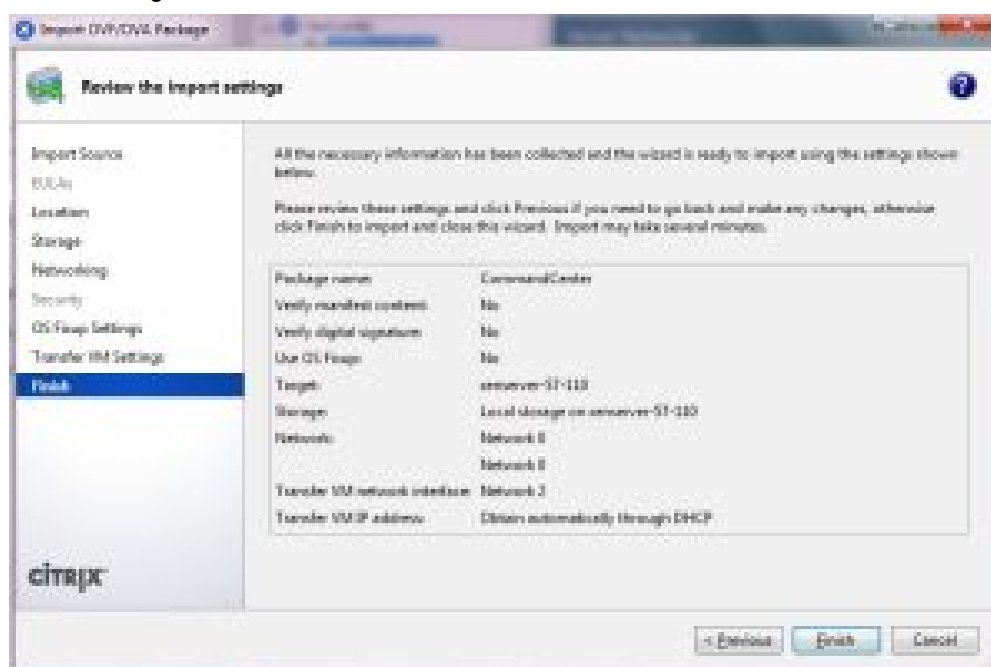


10. Configure networking options. You can configure with DHCP or Static. This configuration does not impact the network parameters of CC-SG. Once the CC-SG VM is running, you can configure CC-SG network parameters from the CC-SG admin console.





11. Once the network is configured, click Next and review. Click Finish.



12. It will take 20-25 minutes for the CC-SG VM to be created. Start the VM and launch the console. For the next steps, go to Log in to Diagnostic Console to Set CC-SG IP Address (on page 10).

Deploying CC-SG on Hyper-V

Requirements

- Hyper-V feature is enabled on a Windows 2019/2016/2012/10 client.
- Hyper-V Manager can be accessed.

Install CC-SG on Hyper-V

1. Extract the VHDF file from the CC-SG installation zip file.
2. In Hyper-V Manager, make sure your local machine is selected in the left panel, then choose Action > New >

Virtual Machine... to open the New Virtual Machine wizard.

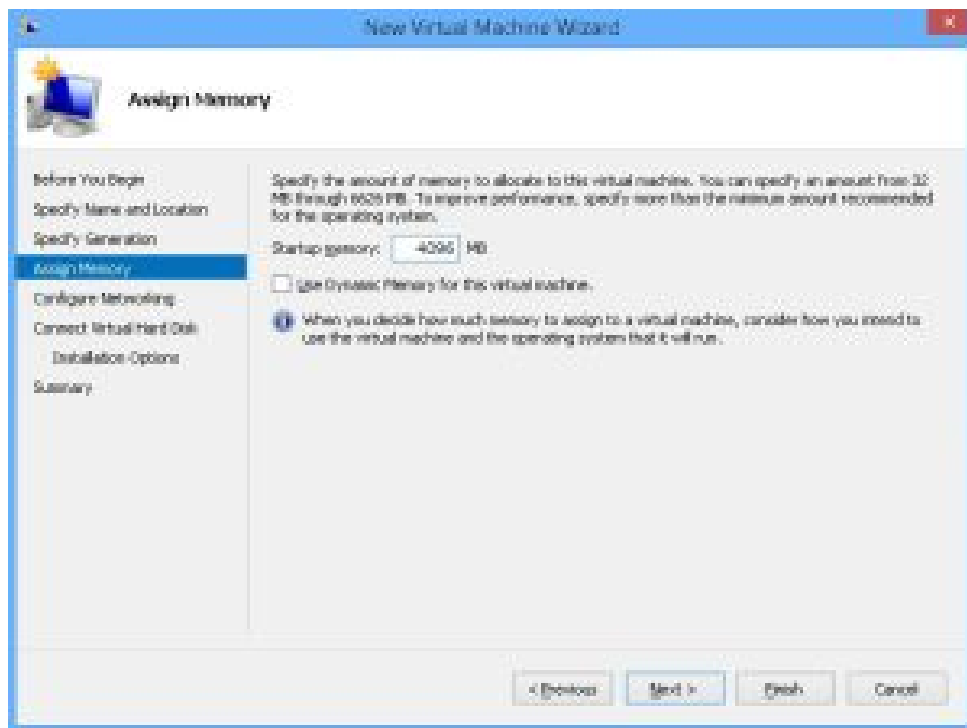
3. In the Before you Begin page, click Next.
4. Enter a name for the VM, and choose a location to store the VM. Click Next.

The screenshot shows the 'Specify Name and Location' page of the 'New Virtual Machine Wizard'. The left sidebar contains a list of steps: 'Before You Begin', 'Specify Name and Location' (highlighted), 'Specify Generation', 'Assign Memory', 'Configure Networking', 'Connect Virtual Hard Disk', 'Installation Options', and 'Summary'. The main area has the title 'Specify Name and Location' and a subtitle 'Choose a name and location for this virtual machine.' Below this, it states: 'The name is displayed in Hyper-V Manager. We recommend that you use a name that helps you easily identify this virtual machine, such as the name of the guest operating system or workload.' There is a text box for 'Name' containing 'CC-SG-1-030'. Below that, it says: 'You can create a folder or use an existing folder to store the virtual machines. If you don't select a folder, the virtual machine is stored in the default folder configured for this server.' There is a checkbox labeled 'Store the virtual machine in a different location' which is checked. Below the checkbox is a text box for 'Location' containing 'C:\DC' and a 'Browse...' button. At the bottom, there is a warning icon and text: 'If you plan to take checkpoints of this virtual machine, select a location that has enough free space. Checkpoints include virtual machine data and may require a large amount of space.' At the bottom right, there are four buttons: '< Previous', 'Next >', 'Finish', and 'Cancel'.

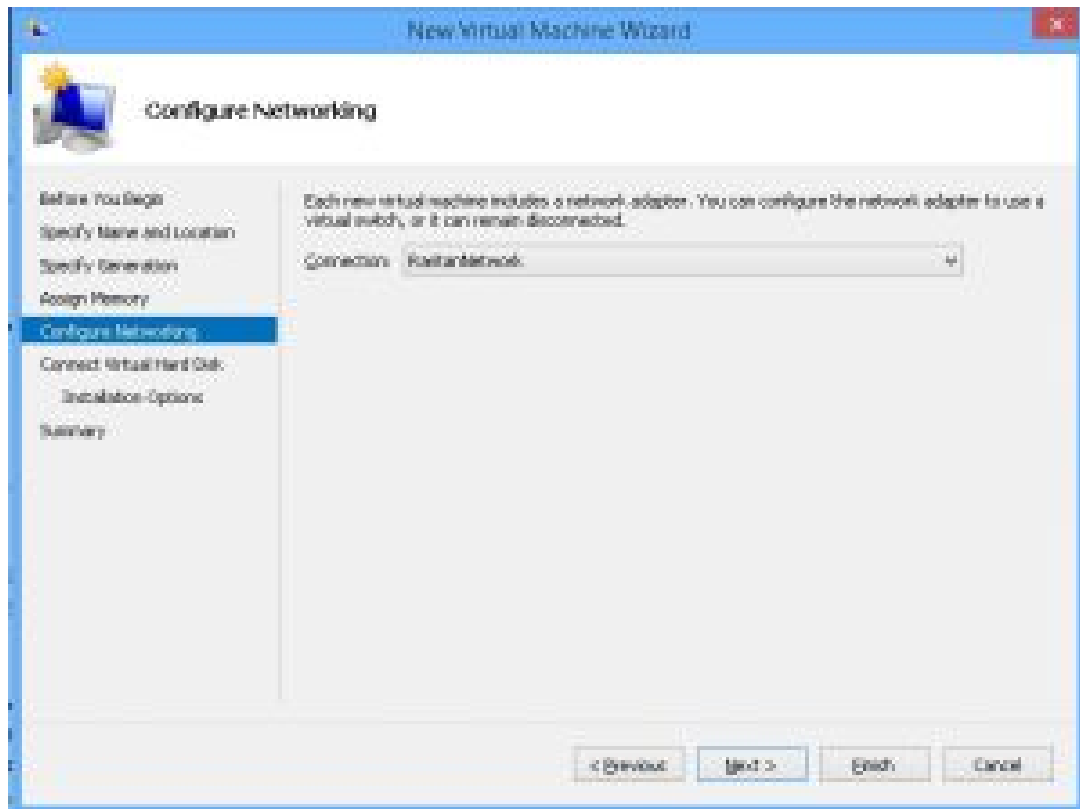
5. In the Specify Generation page, select Generation 1 only. CC-SG does not support Generation 2. Click Next.

The screenshot shows the 'Specify Generation' page of the 'New Virtual Machine Wizard'. The left sidebar contains a list of steps: 'Before You Begin', 'Specify Name and Location', 'Specify Generation' (highlighted), 'Assign Memory', 'Configure Networking', 'Connect Virtual Hard Disk', 'Installation Options', and 'Summary'. The main area has the title 'Specify Generation' and a subtitle 'Choose the generation of this virtual machine.' Below this, there are two radio buttons: 'Generation 1' (selected) and 'Generation 2'. Under 'Generation 1', it says: 'This virtual machine generation provides the same virtual hardware to the virtual machine as in previous versions of Hyper-V.' Under 'Generation 2', it says: 'This virtual machine generation provides support for features such as Secure Boot, SCSI boot, and PXE boot using a standard network adapter. Guest operating systems must be running at least Windows Server 2012 or 64-bit versions of Windows 8.' At the bottom, there is a warning icon and text: 'Once a virtual machine has been created, you cannot change its generation.' At the bottom right, there are four buttons: '< Previous', 'Next >', 'Finish', and 'Cancel'.

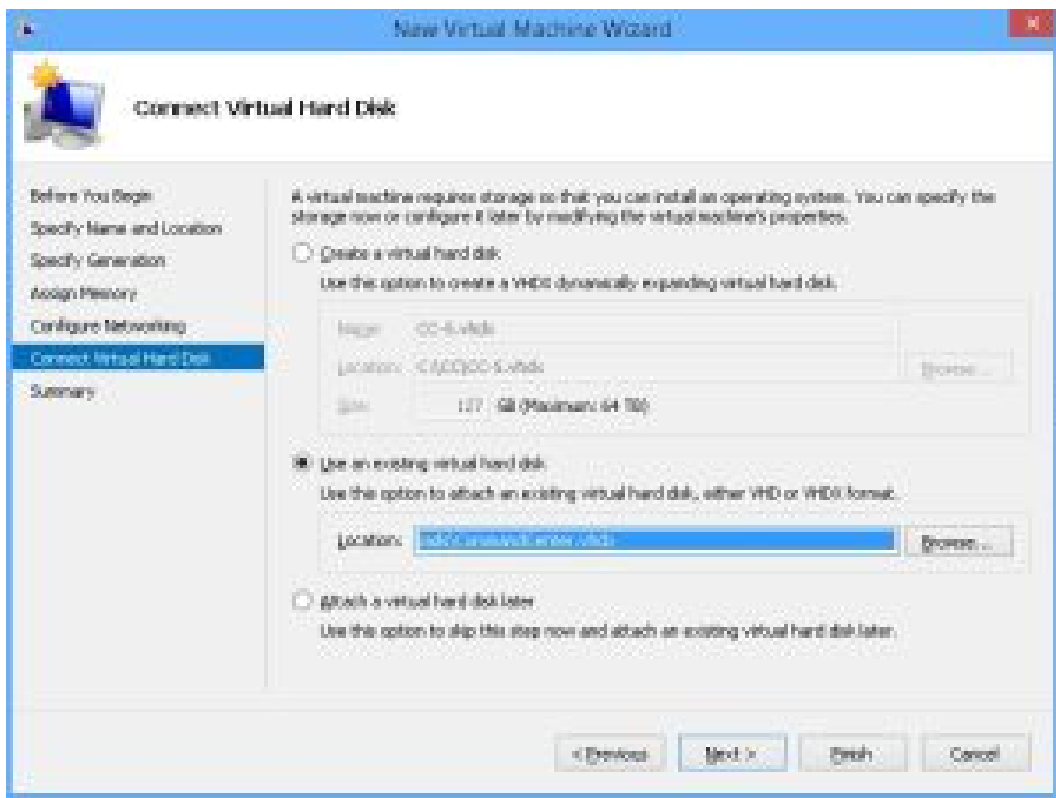
6. In the Assign Memory page, change the Startup Memory to 4GB (4096MB). Make sure that "Use Dynamic Memory for this virtual machine" is NOT selected. Click Next.



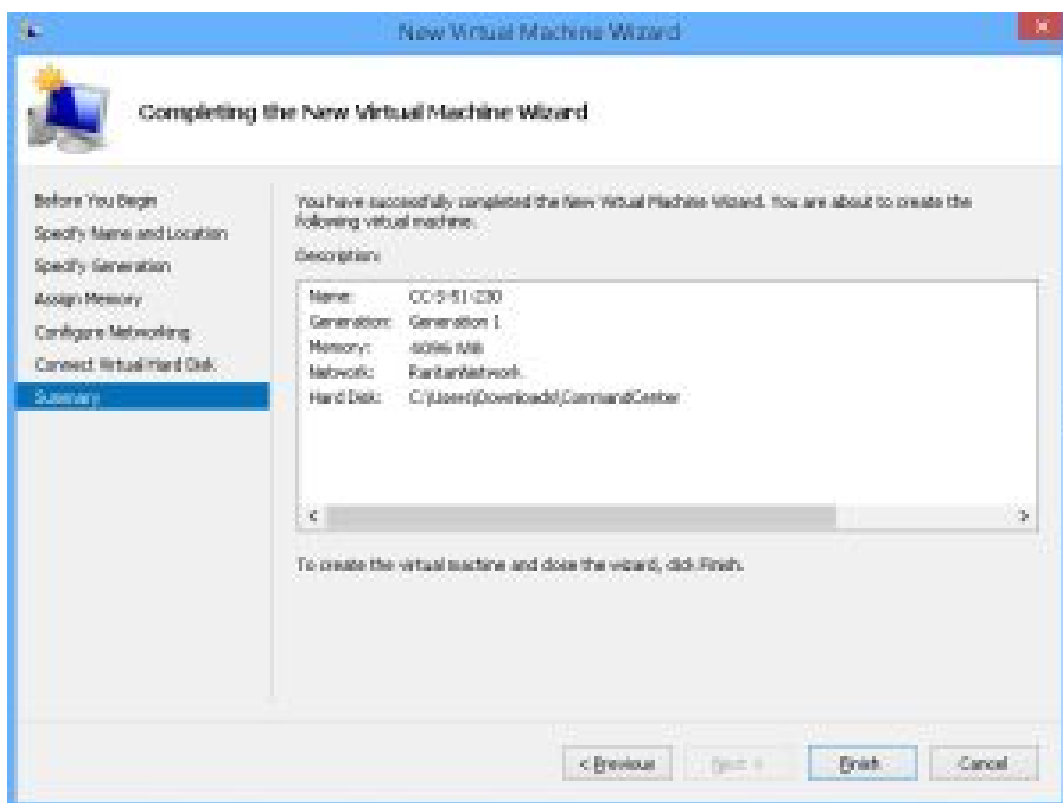
7. On the Configure Networking page, select the network configuration in your client environment. Click Next.



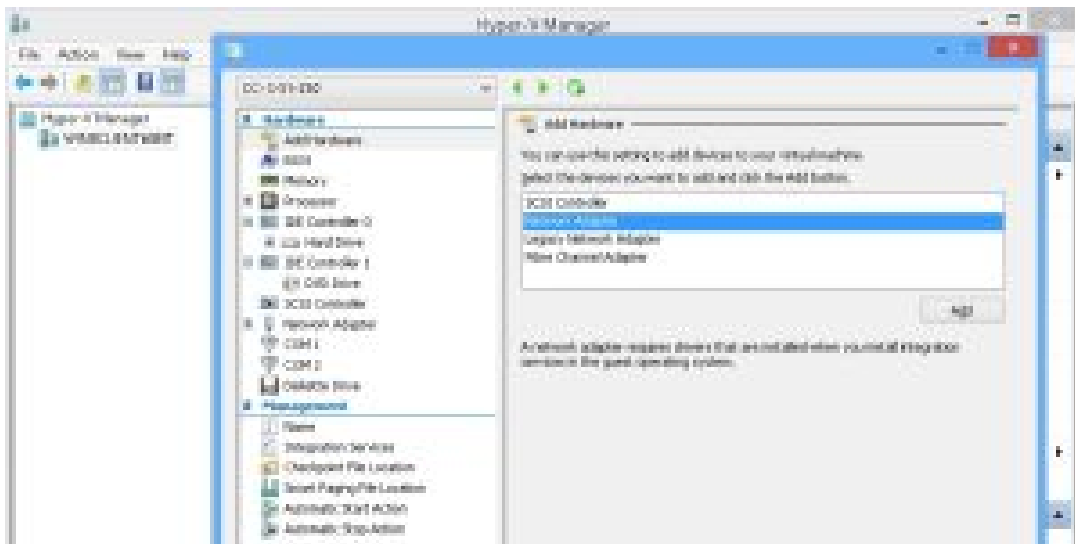
8. In the Connect Virtual Hard Disk page, select "Use an existing virtual hard disk", then click Browse to select the.VHDX file extracted earlier. Click Next.



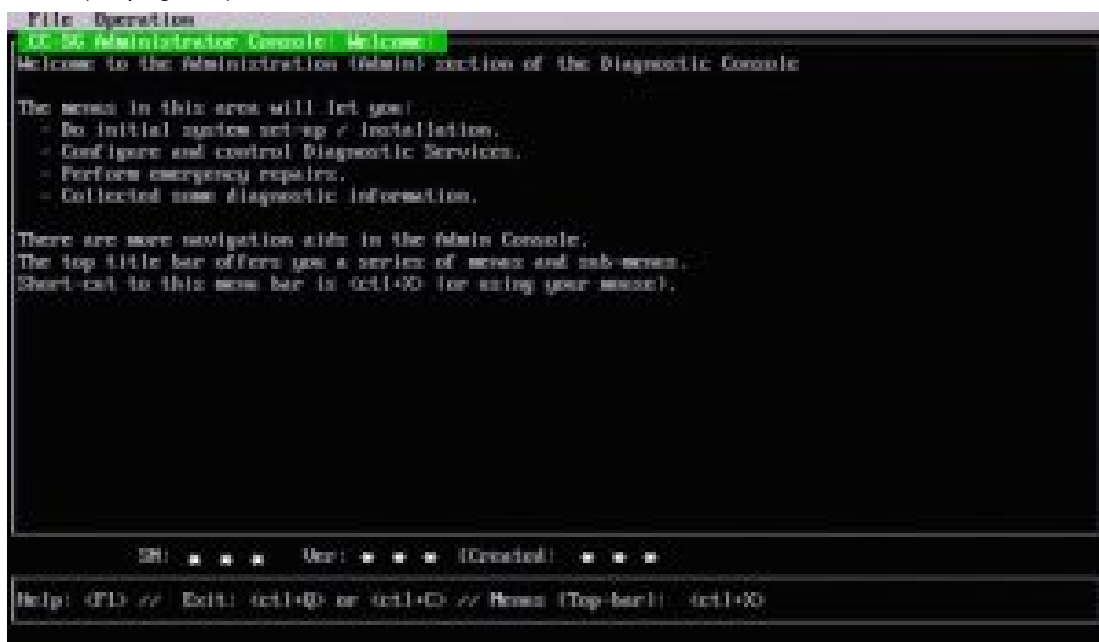
9. A summary of the VM displays. Click Finish.



10. Select the newly created VM, then click Settings and add another network.



11. Start the new VM, and launch the console. For the next steps, go to Log in to Diagnostic Console to Set CC-SG IP Address (on page 10).



Log in to Diagnostic Console to Set CC-SG IP Address

1. Log in as admin/Raritan. Usernames and passwords are case-sensitive.
2. You will be prompted to change the local console password.
 - a. Type the default password (Raritan) again.
 - b. Type and then confirm the new password.
3. Press CTRL+X when you see the Welcome screen.
4. Choose Operation > Network Interfaces > Network Interface Config. The Administrator Console appears.
5. In the Configuration field, select DHCP or Static. If you select Static, type a static IP address. If needed, specify DNS servers, netmask, and gateway address.
6. Select Save.

Default CC-SG Settings

IP Address: 192.168.0.192

Subnet Mask: 255.255.255.0

Username/Password: admin/Raritan

Log in to CC-SG

1. Launch a supported browser and type the URL of the CC-SG: <https://<IP address>/admin>.
For example, <https://192.168.0.192/admin>.
Note: The default setting for browser connections is HTTPS/SSL encrypted.
2. When the security alert window appears, accept the connection.
3. You will be warned if you are using an unsupported Java Runtime Environment version. Follow the prompts to either download the correct version, or continue. The Login window appears.
4. Type the default username (admin) and password (Raritan) and click Login.
The CC-SG Admin Client opens. You are prompted to change your password. Strong passwords are enforced for the admin.

Get Your License

1. The license administrator designated at the time of purchase will receive an email from Raritan Licensing Portal when licenses are available. Use the link in the email, or go directly to www.raritan.com/support. Create a user account and log in, then click "Visit The License Key Management Tool". The licensing account information page opens.
2. Click the Product License tab. The licenses you purchased are displayed in a list. You may have only 1 license or multiple licenses.
3. To get each license, click Create next to the item in the list. If you have more than 1 license, such as a base license of CCSG128-VA and an add-on license of CCL-1024, create the base license first.
4. Enter the Host ID of the virtual machine where you installed the CC-SG virtual appliance. You can copy the Host ID from the Administration > License Management page in the Admin Client, in the CC-SG Host ID field at the top of the page.
 - Sample Host ID: 98A77180737E600FVP9FF1707ED0CE2154CF7FD6
5. Click Create License. The details you entered are displayed in a pop-up. Verify that your Host ID is correct. For clusters, verify both Host IDs.
Warning: Make sure the Host ID is correct! A license created with an incorrect Host ID is not valid and requires Raritan Technical Support's help to fix.
5. Click OK. The license file is created.
6. Click Download Now and save the license file.

Install and Check Out Your License



1. In the CC-SG Admin Client, choose Administration > License Management.
2. Click Add License.
3. Read the license agreement and scroll down the whole text area, then select the I Agree on the checkbox.
4. Click Browse, then select the license file and click OK.
You must check out licenses to activate the features.
5. Select a license from the list then click Check Out. Check out all the licenses you want to activate.

Additional Information

For more information about CommandCenter Secure Gateway and the entire Raritan product line, see Raritan's website (www.raritan.com). For technical issues, contact Raritan Technical Support. See the Contact Support

page in the Support section on Raritan’s website for technical support contact information worldwide.
Raritan’s products use codes licensed under the GPL and LGPL. You can request a copy of the open-source code. For details, see the Open Source Software Statement at (<http://www.raritan.com/about/legal-statements/open-source-software-statement/>) on Raritan’s website.
CC-SG Virtual Appliance Quick Setup Guide – VMware, XEN, and HyperV
QSG-CCVirtual-NotServed-v9.0-0H. 255-80-7015-00-RoHS

Documents / Resources

	Raritan CommandCenter Secure Gateway [pdf] Installation Guide Raritan, VIRTUAL APPLIANCE, VMWARE, XEN, HYPERV, CommandCenter, Secure, Gateway
	Raritan CommandCenter Secure Gateway [pdf] User Guide CommandCenter, Secure Gateway, CommandCenter Secure Gateway, VMWARE, XEN, HYPE RV

References

-  [Data Center Power Management, DCIM Software, and KVM-over-IP - Raritan](#)
-  [Data Center Power Management, DCIM Software, and KVM-over-IP - Raritan](#)
-  [Legal - About Us - Raritan](#)
-  [Data Center Product Support - Data Center Solutions - Raritan](#)
-  [Centralized Server Management | CommandCenter Secure Gateway - Raritan](#)