



rapoo Multi Mode Wireless Mouse User Guide

[Home](#) » [rapoo](#) » rapoo Multi Mode Wireless Mouse User Guide

rapoo Multi Mode Wireless Mouse

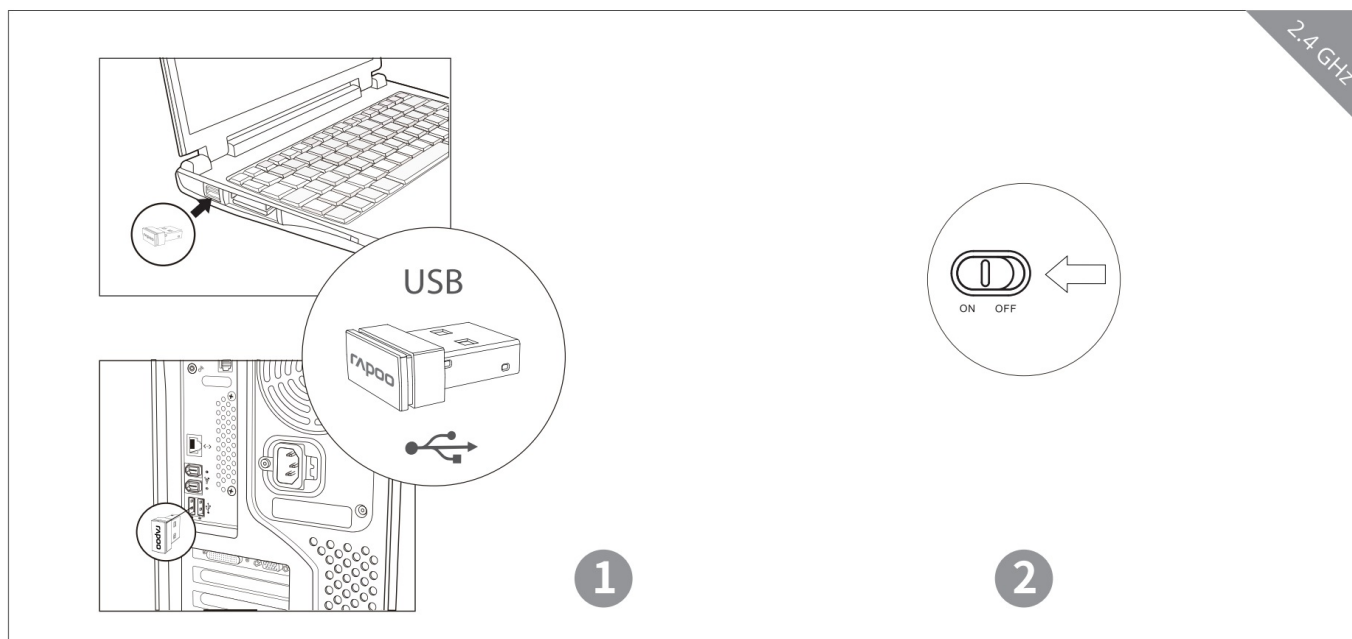


M300, M300Silent, MS00, MS00 Silent, 7200M, 7200M Silent

Contents [[hide](#)]

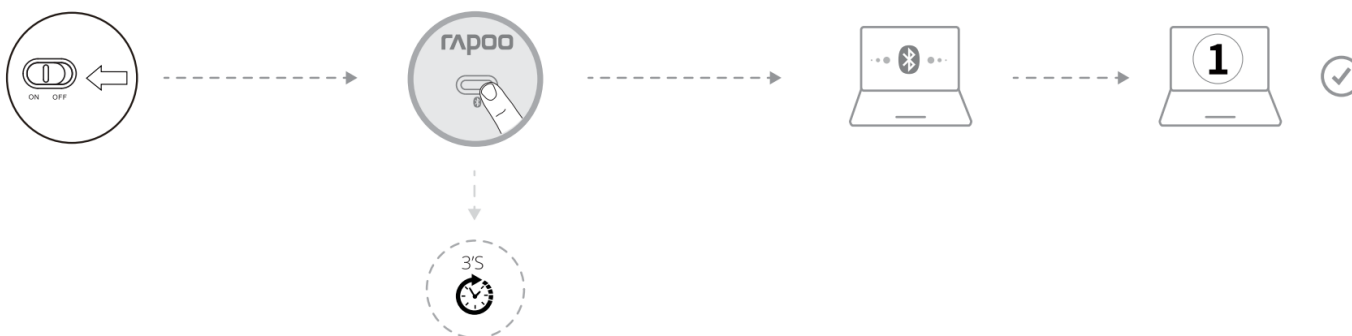
- 1 Multi Mode Wireless Mouse
- 2 Bluetooth Mode
 - 2.1 Pair your first device
 - 2.2 Pair your second device
 - 2.3 Switching among paired devices
- 3 Status LED
- 4 Warranty conditions
- 5 System Requirements
- 6 Package contents
- 7 Legal & Compliance Information
- 8 Conformity Information
- 9 Conformity Information United Kingdom
- 10 Disposal of Packaging Materials
- 11 Disposal of the Device
- 12 Disposal of Batteries
- 13 Documents / Resources
- 14 Related Posts

Multi Mode Wireless Mouse



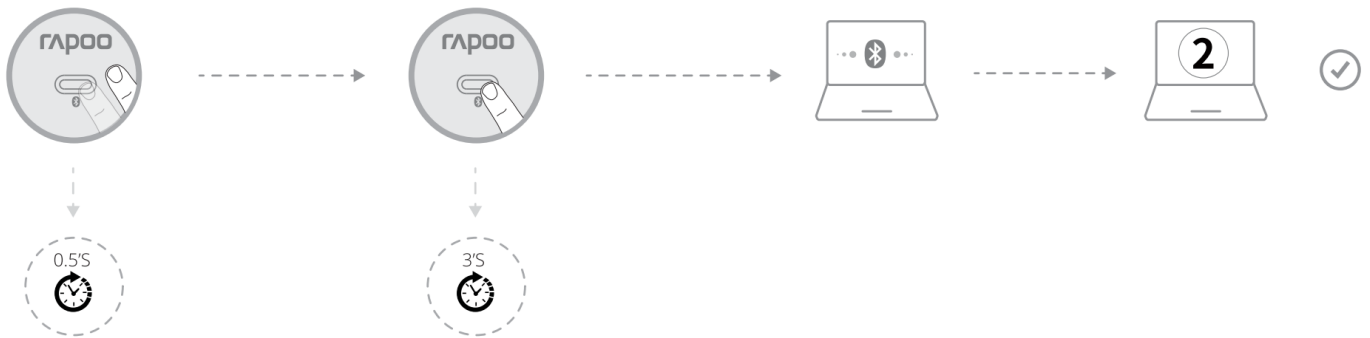
Bluetooth Mode

Pair your first device



1. Turn on the mouse.
2. Keep pressing the Bluetooth button at least 3 seconds to pair. The status LED flashes green slowly. The mouse is discoverable for 2 minutes.
3. Complete Bluetooth pairing on your device. When the mouse and your device are paired, the light turns off.

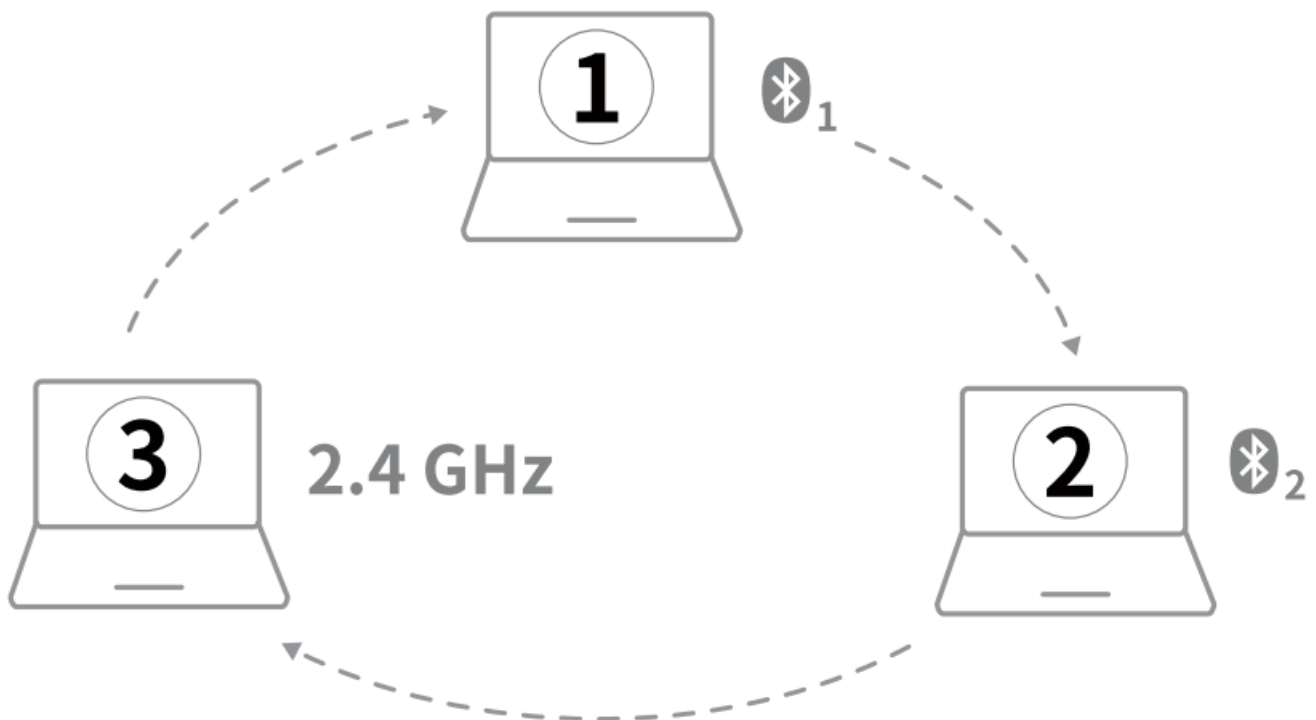
Pair your second device



1. Press the Bluetooth button to switch to another channel. Keep pressing the Bluetooth button at least 3 seconds to pair. The status LED flashes blue slowly. The mouse is discoverable for 2 minutes.
2. Complete Bluetooth pairing on your device.

Switching among paired devices

Press Bluetooth button to switch among up to 3 paired devices. The mouse connects up to 2 devices via Bluetooth and 1 via a 2.4 GHz receiver.



Status LED

When you pick up the mouse

If the light turns stable green for 6 seconds, the Bluetooth device 1 is paired. If the light turns stable blue for 6 seconds, the Bluetooth device 2 is paired. If the light is off, the 2.4 GHz device is paired.

Switching among paired devices

When you switch to the 2.4GHz device, status LED turns off. When you switch to Bluetooth device 1 or 2, green or blue light rapidly flashsm respectively.

Low battery

Green light rapidly flashes twice every two seconds when you use the mouse.

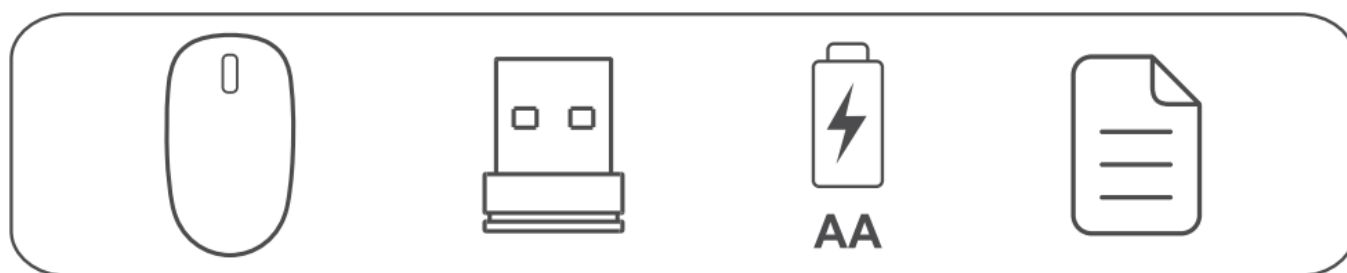
Warranty conditions

This device is covered by a 2-year limited hardware warranty from the date of purchase. For more information, please visit www.rapoo-eu.com.

System Requirements

Windows® 7 /8/10/11, Mac OS X 10.4 or later, USB port

Package contents



Legal & Compliance Information

Product: Rapoo Multi-mode Wireless Mouse

Model: M300, M300Silent, MS00, MS00 Silent, 7200M, 7200M Silent

www.rapoo-eu.com

as-europe@rapoo.com

Manufacturer:

Rapoo Europe B.V.
Weg en Bos 132 C/D
2661 GX Bergschenhoek
The Netherlands

UK Authorized Representative {for authorities only):

ProductIP (UK) Ltd.
8, Northumberland Av.
London WC2N SBY
United Kingdom

Conformity Information



Hereby, Rapoo Europe B.V. declares that this radio equipment product is in compliance with Directive 2014/53 EU (RED) and all other applicable EU Regulations. The full text of the EU Declaration of Conformity is available at the following internet address: www.rapoo-eu.com. Operating frequency band: 2402 2480MHz
Maximum radio-frequency power transmitted: 5dBm/3.16mW

Conformity Information United Kingdom



Hereby, Product IP (UK) Ltd .. as authorized representative of Rapoo Europe B.V .. declares that this radio equipment product is in compliance with the UK Radio Equipment Regulations 2017 and all other applicable UK Regulations. The full text of the UK Declaration of Conformity is available at the following internet address: www.rapoo-eu.com. Operating frequency band: 2402 to 2480 MHz. Maximum radio-frequency power transmitted: 5dBm/3.16mW

Disposal of Packaging Materials



The packaging materials have been selected for their environmental friendliness and are recyclable. Dispose of packaging materials which are no longer needed in accordance with applicable local regulations.

Disposal of the Device

The symbol above and on the product means that the product is classed as Electrical or Electronic equipment and should not be disposed with other household or commercial waste at the end of its useful life. The Waste of Electrical and Electronic Equipment (WEEE) Directive has been put in place to recycle products using best available recovery and recycling techniques to minimize the impact on the environment, treat any hazardous substances and avoid the increasing landfill. Contact local authorities for information on the correct disposal of Electrical or Electronic equipment.

Disposal of Batteries


Used batteries may not be disposed of in normal household waste. All consumers are required by law to dispose of batteries at a collection point provided by their local community or at a retail store. The purpose of this obligation is to ensure that batteries are disposed of in a non-polluting manner. Only dispose of batteries when they are fully discharged. Cover the poles of partially discharged batteries with tape to prevent short circuits.

Made in China

©2022 Rapoo. All rights reserved. The Bluetooth® word mark and logos are registered trademarks owned by Bluetooth SIG, Inc. and any use of such marks by Rapoo is under license. Rapoo, the Rapoo logo and other Rapoo marks are owned by Rapoo and may be registered. All other trademarks are property of their respective owners.

It's forbidden to reproduce any part of this quick start guide without the permission of Rapoo.

Documents / Resources

	<p>rapoo Multi Mode Wireless Mouse [pdf] User Guide M300, M300Silent, M500, M500 Silent, 7200M, 7200M Silent, Multi Mode Wireless Mouse, Multi Mode Mouse, Wireless Mouse, Mouse</p>
---	--