



rapoo MT980S Multi-Mode Wireless Keyboard and Mouse User Guide

[Home](#) » [rapoo](#) » rapoo MT980S Multi-Mode Wireless Keyboard and Mouse User Guide 



Quick start guide

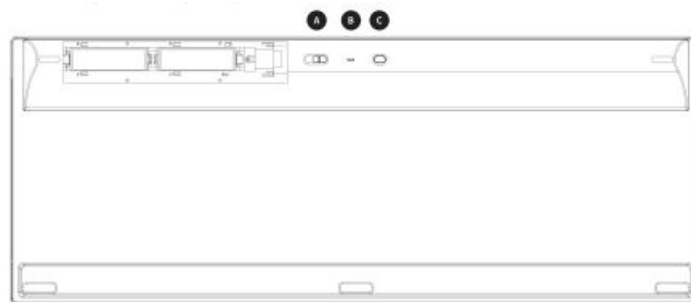
MT980S (E9260S+MT750S)

Multi-mode Wireless Keyboard & Mouse

Contents

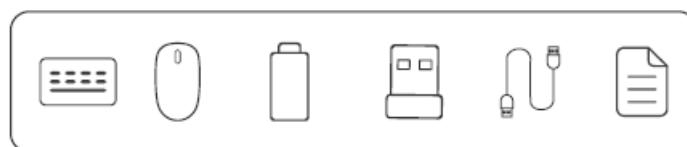
- 1 Overview
 - 1.1 Package Content
 - 1.2 System Requirements
- 2 Instruction
- 3 Bluetooth Mode
 - 3.1 Mouse
 - 3.2 Bluetooth Pairing
- 4 Indicator Light
 - 4.1 Keyboard
 - 4.2 Mouse
 - 4.3 Switching Among Paired Devices
 - 4.4 Side Scroll Wheel.
 - 4.5 Low Battery
 - 4.6 Warranty
 - 4.7 Safety Instructions.
 - 4.8 Troubleshooting
 - 4.9 Copyright
 - 4.9.1 Documents / Resources
 - 4.9.2 Related Posts

Overview



1. Device switch
2. Status LED
3. Bluetooth pairing button

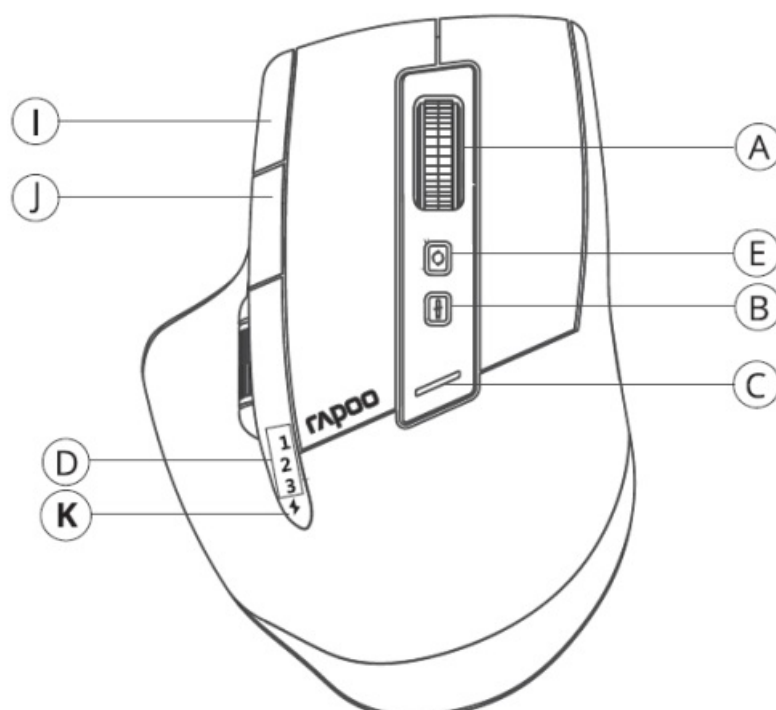
Package Content

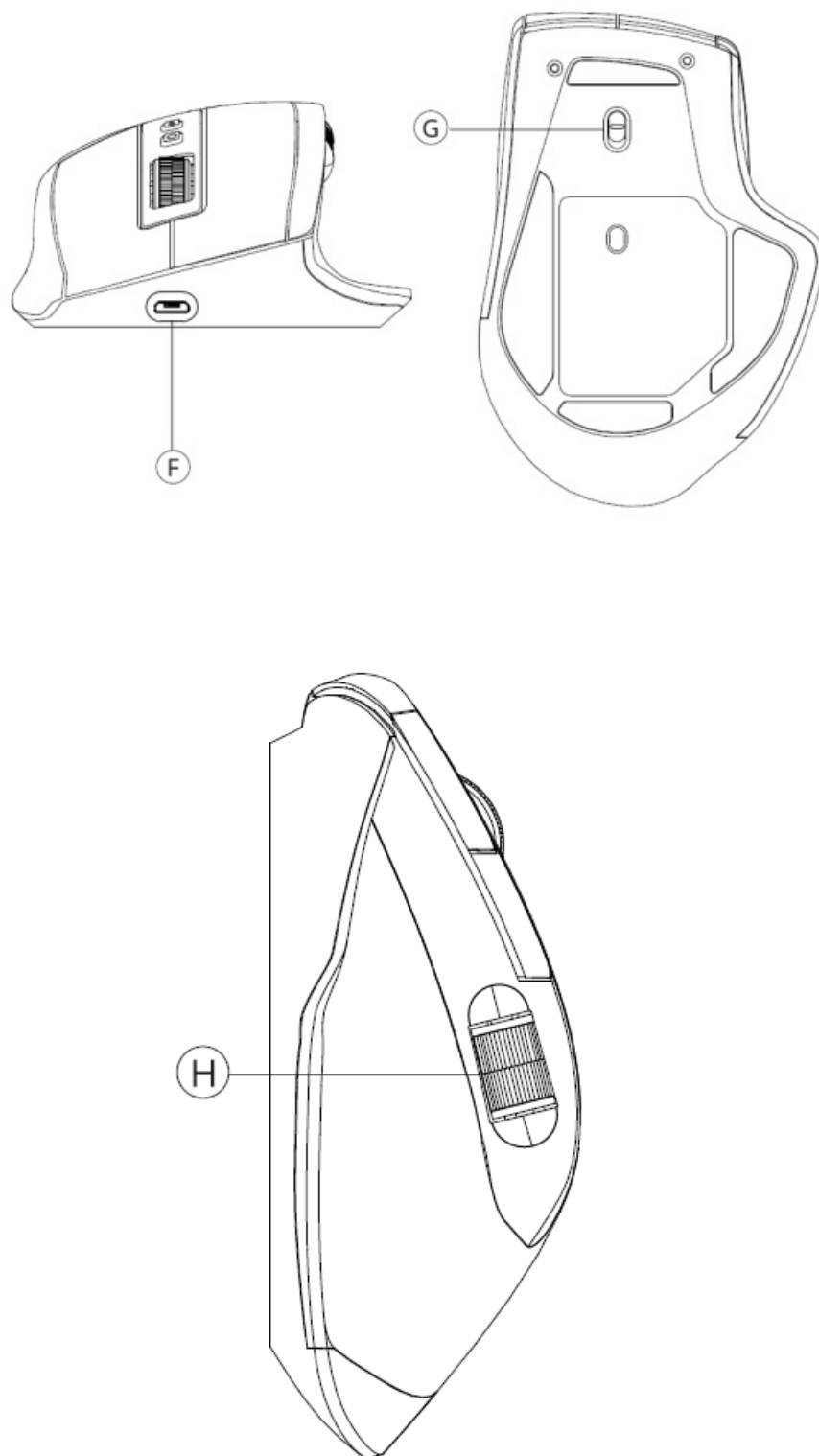


System Requirements

Windows® XPNista/7/8/10 or later, USB port

Windows® XP/Vista/7/8/10





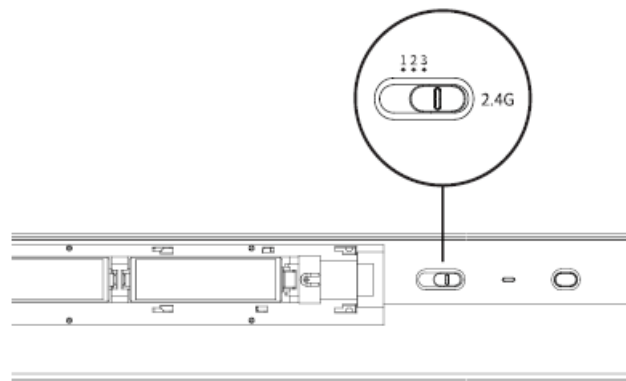
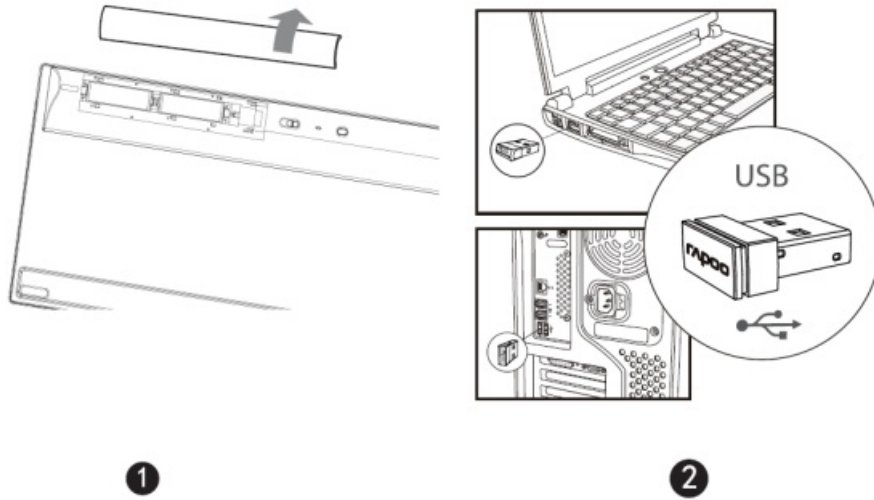
- A. Scroll wheel
- B. DPI switching button/DPI
- C. DPI LED/DP /DPI LED/DPI
- D. Device light,
- E. Device switching button
- F. USB port/USE
- G. ON/OFF switch
- H. Side scroll wheel

K. Low power /Charging indicator

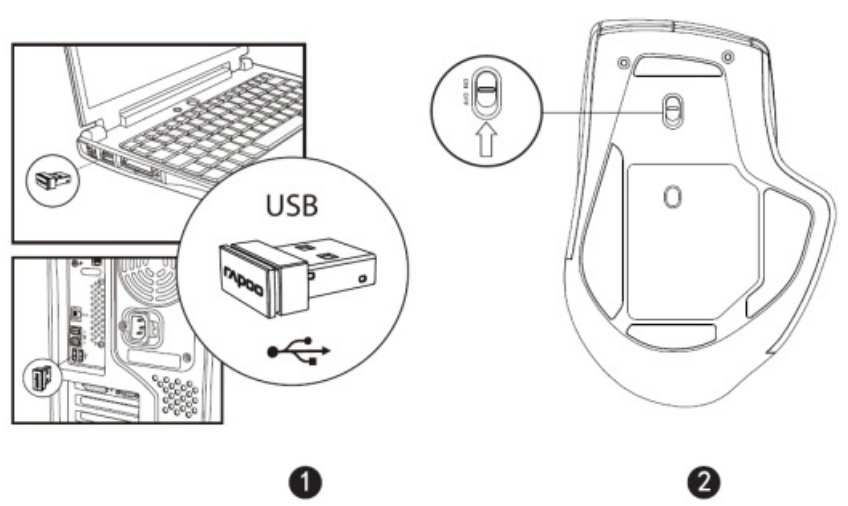
J. Back button

I. Forward button

Instruction



3



Bluetooth Mode

1. Slide the device switch to select the channel (1, 2 or 3) on which your device is connected.
2. Keep pressing Bluetooth pairing button until status LED starts to flash slowly. The keyboard is discoverable for 60 seconds.
3. Complete Bluetooth pairing on your device. When the keyboard and your device are paired, the status LED turns off.

Mouse

1. Turn on mouse. Device light starts to blink rapidly.
2. Press the device switch button to select the device channel.
3. Keep pressing the device switch button at least 3 seconds to bluetooth pairing.
4. Connect mouse with your Bluetooth device. Blinking stops.
5. Done.

Bluetooth Pairing

Windows®7 and 8:

1. Click the “Start” button, then select Control Panel > Add a device
2. Select the keyboard or mouse from the list.*
3. Click next and follow any other instructions that may appear on the screen.

Windows®10:

1. Click the “Start” button, then select Settings > Devices > Bluetooth.
2. Select the keyboard or mouse from the list.*

3. Click Pair and follow any other instructions that may appear on the screen.

*RAPOO BT3.0 Keyboard/RAPOO BLE Keyboard/Rapoo BleMouse/RAPOO BT3.0 Mouse

Note: RAPOO BLE requires Win8 or later version

Indicator Light

Keyboard

(Status LED)

Bluetooth mode

Status LED slowly lashes blue, indicating the keyboard and your device are pairing for the first time. If your device paired with the keyboard before, the light will rapidly flashes blue when they try to pair again. The light turns off when they are paired.

Mouse

(Device light)

Three device lights stand for three different Bluetooth devices.

1. When mouse connects with a 2.4G device, 3 device lights are off.
2. When mouse is trying to connect back with a device, the device light starts to blink rapidly.
3. When mouse is pairing with a Bluetooth device, the device light starts to blink slowly.
4. Bluetooth device connected: The indicator light of the appropriate device is on for 6 seconds when the mouse is picked up.

(Status LED)

1. 2.4G indicator

Green LED blinks once.

2. DPI switching indicator

Green LED blinks. It blinks once when you switch to the first DPI, blinks twice for the second DPI, blinks three times for the third DPI and blinks four times for the fourth DPI.

3. Low power indicator

Red LED blinks twice rapidly every two seconds when mouse is working.

4. Charging indicator

When mouse is charging, green LED is on. When it is fully charged, green LED is off.

Switching Among Paired Devices

Both the keyboard and the mouse pair up to 3 devices via Bluetooth and 1 device with a 2.4 GHz receiver. Slide

the device switch of the keyboard to switch among paired devices. Press the device switching button of the mouse to switch among paired devices.

Side Scroll Wheel.

Scroll horizontally by default. Set up customize functions via driver.

Low Battery

When you use the keyboard or mouse, if status LED flashes twice every two seconds, it means the battery power is low.

Warranty

The device is provided with one-year limited hardware warranty from the purchase day. Please see www.rapoo.com for more information.

Safety Instructions.

Do not open or repair this device. Do not use the device in a damp environment. Clean the device with a dry cloth.

Troubleshooting

See www.rapoo.com for latest FAQs, drivers and quick start guide. For more services and help, please register on www.rapoo.com.

Copyright

It is forbidden to reproduce any part of this quick start guide without the permission of Shenzhen Rapoo Technology Co., Ltd.



NOTE:

This equipment has been tested and found to comply with the limits for a Class B digital device, pursuant to part 15 of the FCC Rules. These limits are designed to provide reasonable protection against harmful interference in a

residential installation. This equipment generates uses and can radiate radio frequency energy and. if not installed and used in accordance with the instructions, may cause harmful interference to radio communications. However. there is no guarantee that interference will not occur in a particular installation. If this equipment does cause harmful interference to radio or television reception, which can be determined by turning the equipment off and on, the user is encouraged to try to correct the interference by one or more of the following measures :

- Reorient or relocate the receiving antenna. Increase the separation between the equipment and receiver.
- Connect the equipment into an outlet on a circuit different from that to which the receiver is connected.
- Consult the dealer or an experienced radio/TV technician for help


Changes or modifications not expressly approved by the party responsible for compliance could void the users authority to operate the equipment.

This device complies with Dart 15 of the FCC Rules. Operation is subject to the following two conditions:

- (1) this device may not cause harmful interference, and
- (2) this device must accept any interference received, including interference that may cause undesired operation.

A.2 5613-18100-222

Documents / Resources

	<p>rapoo MT980S Multi-Mode Wireless Keyboard and Mouse [pdf] User Guide 3083, PP23083, MT980S Multi-Mode Wireless Keyboard and Mouse, Multi-Mode Wireless Key board and Mouse</p>
---	---