

**rapoo**  
rapoo MT760\_L\_M  
Rechargeable Multi  
Mode Wireless



# rapoo MT760\_L\_M Rechargeable Multi Mode Wireless User Guide

[Home](#) » [rapoo](#) » rapoo MT760\_L\_M Rechargeable Multi Mode Wireless User Guide 

## Contents

- [1 rapoo MT760\\_L\\_M Rechargeable Multi Mode Wireless](#)
- [2 Overview](#)
- [3 Packaging contents](#)
- [4 Bluetooth mode](#)
- [5 Install driver](#)
- [6 Safety Instructions](#)
- [7 Warranty conditions](#)
- [8 Conformity Information](#)
- [9 Documents / Resources](#)
  - [9.1 References](#)
- [10 Related Posts](#)



**rapoo MT760\_L\_M Rechargeable Multi Mode Wireless**



**Rapoo MT760L/MT760M**

**Specifications**

Feature	Description
Buttons	6 buttons
Resolution	600/1200/1600/3200 DPI
Battery	Rechargeable Li-ion battery
Wireless Technology	Bluetooth 3.0, 4.0, and 2.4 GHz
Operating Range	Up to 10 meters
Compatibility	Windows XP/Vista/7/8/10, Mac OS

**Overview**

- MT760L and MT760M are wireless mice with multiple connectivity options.
- They feature a high-performance sensor with adjustable DPI settings.
- The ergonomic design ensures comfortable use over extended periods.

**Package Contents**

- MT760L/MT760M Mouse
- USB Receiver
- USB Charging Cable

- User Manual

## Charging Instructions

To charge the mouse, connect the USB charging cable to the mouse and a power source. The charging indicator will light up while charging and turn off when fully charged.

## Connection Modes

The mouse supports multiple connection modes:

1. Bluetooth 3.0
2. Bluetooth 4.0
3. 2.4 GHz Wireless

Switch between modes using the button on the bottom of the mouse.

## Button Functions

- Left Button: Click
- Right Button: Context Menu
- Middle Button: Scroll
- DPI Button: Adjust DPI
- Forward Button: Navigate Forward
- Backward Button: Navigate Backward

## Driver Installation

To install the driver, visit [www.rapoo.com](http://www.rapoo.com) and download the appropriate driver for your operating system.

## Legal & Compliance Information

This product complies with CE and UKCA standards. For more information, refer to the compliance section on the official website.

## FAQ

### 1. How do I switch between connection modes?

Use the button on the bottom of the mouse to toggle between Bluetooth 3.0, Bluetooth 4.0, and 2.4 GHz wireless modes.

### 2. What should I do if the mouse is not charging?

Ensure the USB cable is properly connected to both the mouse and a power source. Check the charging indicator for status.

### 3. Can I use the mouse with Mac OS?

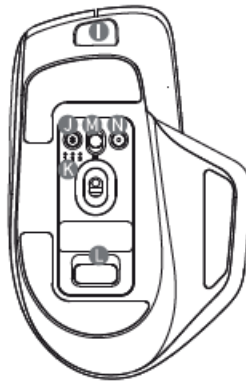
Yes, the mouse is compatible with Mac OS in addition to Windows XP/Vista/7/8/10.

### 4. How do I adjust the DPI settings?

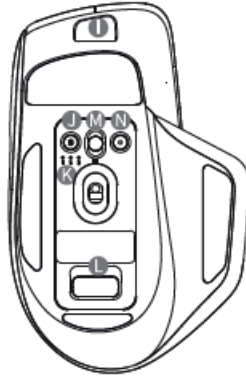
Press the DPI button on the mouse to cycle through the available DPI settings: 600, 1200, 1600, and 3200.

## Overview

**MT760L**

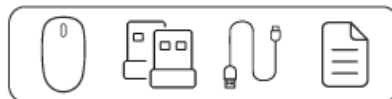


**MT760M**



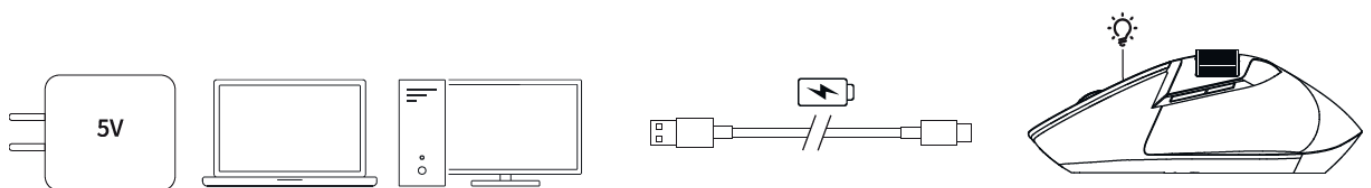
- A Left button
- B Right button
- C Middle button/scroll wheel
- D Power and Connection Indicator
- E DPI Button
- F Side Scroll Wheel
- G Forward Button
- H Back Button

## Packaging contents



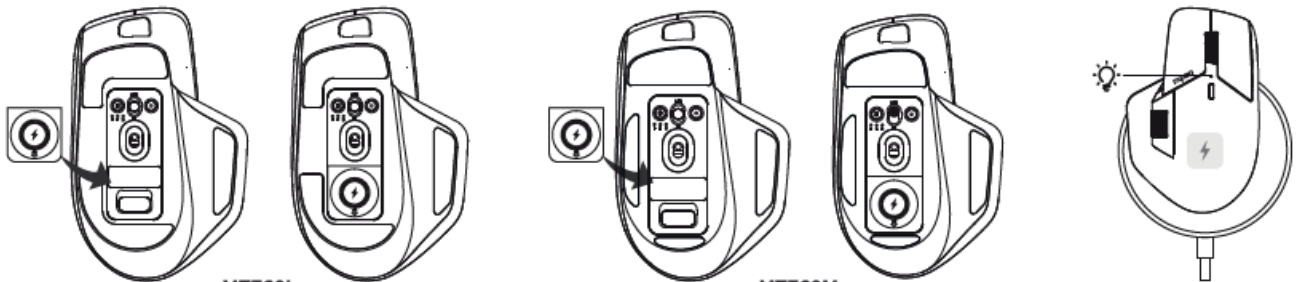
## Charging MADE

### Wired Charging





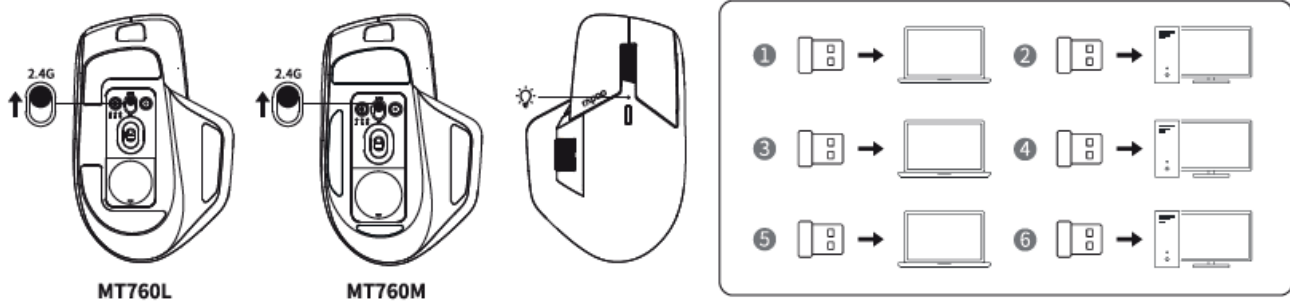
Wireless Charging Module WMI(to be purchased separately)



Lower Power Indication: Red indicator flashes (twice a second for 5 seconds) Charging: White indicator goes on  
Fully Charged: Whited indicator goes off

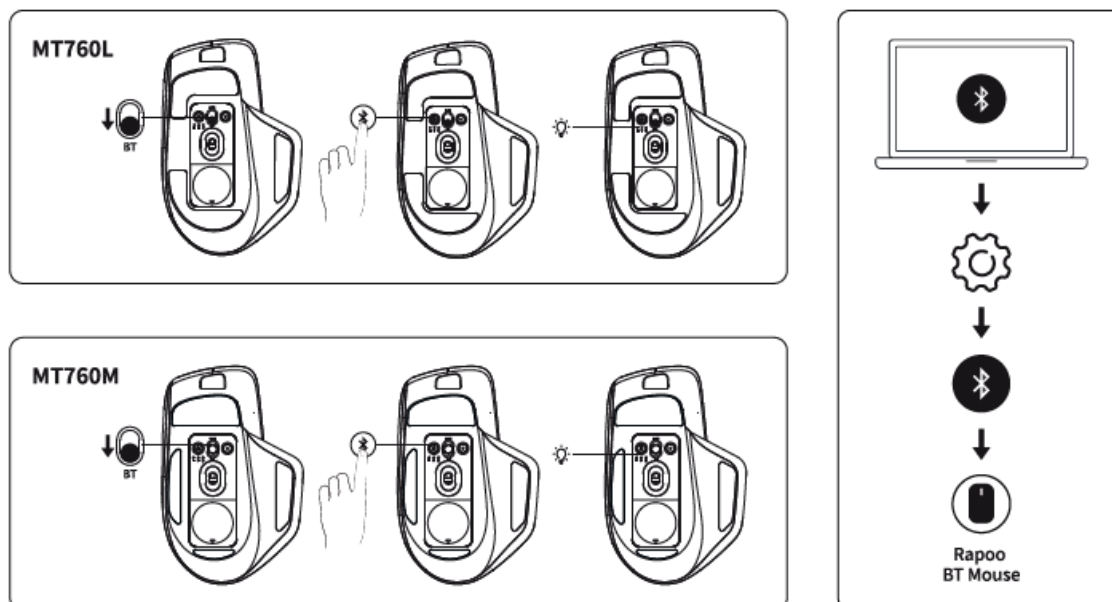
## Connection mode

### 2.4G Mode



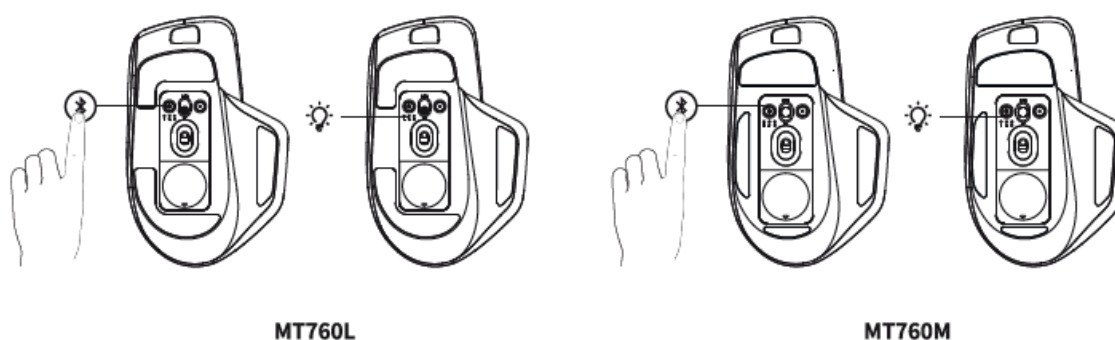
The mice can connect up to 6 receivers. The retail packaging includes 2 receivers are already connected to the mouse. Please purchase extra 4 receivers which needs to be paired by user (Please visit [www.rapoo-eu.com](http://www.rapoo-eu.com) for pairing steps)

## Bluetooth mode



Press and hold the Bluetooth button more than 3 seconds for pairing: the green flashes rapidly twice a second; the light goes off if pairing is failed after 2 minute.

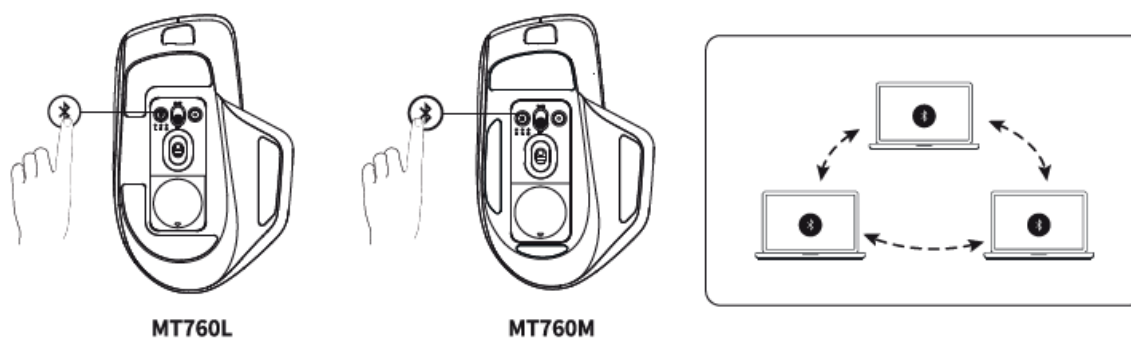
### Connecting Device B and C



Briefly press the Bluetooth button for switching: the green light flashes slowly once a second; the light goes off if pairing is failed after 30 seconds.

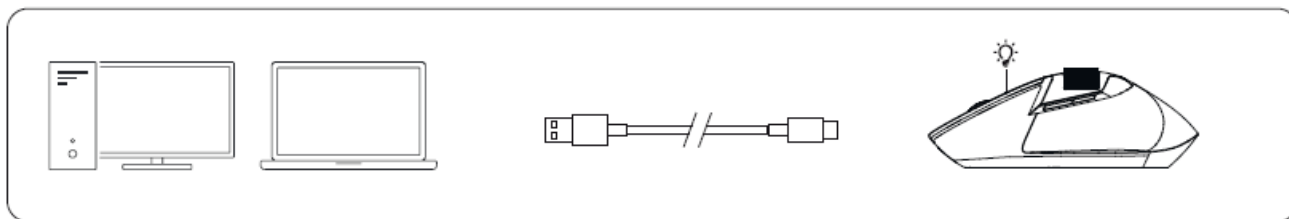
Press and hold the Bluetooth button more than 3 seconds for pairing: the green flashes rapidly twice a second; the light goes off if pairing is failed after 2 minutes.

### Switching among Bluetooth devices

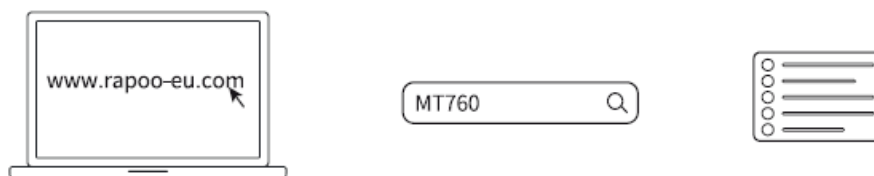


Briefly press the Bluetooth button to change among 3 paired devices.

### Wired Mode

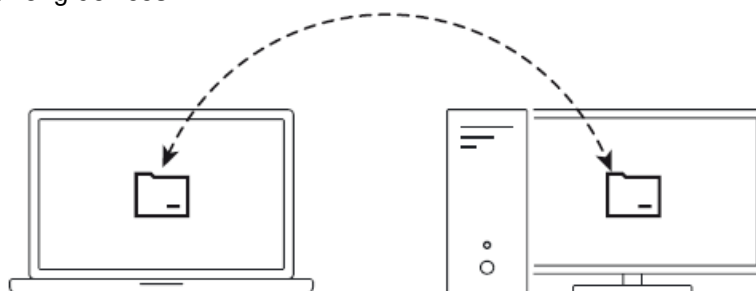


## Install driver



## M+ Cross-device transmission function

File transmission can be done by copying and pasting under Windows when mice is connected with 2.4G, all paired devices are installed with driver and connected with same LAN in the same domain. File transmission doesn't support drag and drop among devices.



## Safety Instructions

Please scan the QR code



## Warranty conditions

This device is covered by a 2-year limited hardware warranty from the date of purchase.

## Legal & Compliance Information

Product: Rapoo Multi-mode Wireless Mouse

Model: MT760L / MT760M

[www.rapoo-eu.com](http://www.rapoo-eu.com)

[as-europe@rapoo.com](mailto:as-europe@rapoo.com)

**Manufacturer:**

- Rapoo Europe B.V.
- Prismalaan West 27
- 2665 PC Bleiswijk
- The Netherlands

## UK Authorized Representative

- (for authorities only):
- ProductIP (UK) Ltd.
- 8, Northumberland Av.
- London WC2N 5BY
- United Kingdom



Conformity Information: Hereby, Rapoo Europe BM. declares that this radio equipment product is in compliance with Directive 2014/53 EU (RED) and all other applicable EU Regulations. The full text of the EU Declaration of Conformity is available at the following internet address: [www.rapoo-eu.com](http://www.rapoo-eu.com). Operating frequency band: 2402-2479MHz Maximum radio-frequency power transmitted: 5dBm/3.16mW

## Conformity Information

### Recycling Information



Disposal of Packaging Materials: The packaging materials have been selected for their environmental friendliness and are recyclable.

Dispose of packaging materials which are no longer needed in accordance with applicable local regulations.

**Disposal of the Device:** The symbol above and on the product means that the product is classed as Electrical or Electronic equipment and should not be disposed with other household or commercial waste at the end of its useful life. The Waste of Electrical and Electronic Equipment (WEEE) Directive has been put in place to recycle products using best available recovery and recycling techniques to minimise the impact on the environment, treat any hazardous substances and avoid the increasing landfill. Contact local authorities for information on the correct disposal of Electrical or Electronic equipment.

**Disposal of Batteries:** used batteries may not be disposed of in normal household waste, All consumers are required by law to dispose of batteries at a collection point provided by their local community or at a retail store. The purpose of this obligation is to ensure that batteries are disposed of in a non-polluting manner, Only dispose of batteries when they are fully discharged, Cover the poles of partially discharged batteries with tape to prevent short circuits.

Made in China 02023 Rapoo. All rights reserved. The Bluetooth® word mark and logos are registered trademarks owned by Bluetooth SIG, Inc. and any use of such marks by Rapoo is under license. Rapoo, the Rapoo logo and other Rapoo marks are owned by Rapoo and may be registered. All other trademarks are property of their respective owners.


It's forbidden to reproduce any part of this quick start guide without the permission of Rapoo.





[www.rapoo-eu.com](http://www.rapoo-eu.com)

## Documents / Resources



[rapoo MT760\\_L\\_M Rechargeable Multi Mode Wireless](#) [pdf] User Guide  
MT760\_L\_M Rechargeable Multi Mode Wireless, MT760\_L\_M, Rechargeable Multi Mode Wireless, Multi Mode Wireless, Mode Wireless, Wireless

## References

- [User Manual](#)

### [Manuals+](#). [Privacy Policy](#)

This website is an independent publication and is neither affiliated with nor endorsed by any of the trademark owners. The "Bluetooth®" word mark and logos are registered trademarks owned by Bluetooth SIG, Inc. The "Wi-Fi®" word mark and logos are registered trademarks owned by the Wi-Fi Alliance. Any use of these marks on this website does not imply any affiliation with or endorsement.