



rapoo MT550 Wireless Keyboard and Laser Mouse Combo User Guide

[Home](#) » [rapoo](#) » rapoo MT550 Wireless Keyboard and Laser Mouse Combo User Guide 

Contents

- [1 rapoo MT550 Wireless Keyboard and Laser Mouse Combo](#)
- [2 Instruction](#)
- [3 Device light](#)
- [4 Device switching button](#)
- [5 Warranty](#)
- [6 FCC Statement](#)
- [7 Declaration of Conformity](#)
- [8 Documents / Resources](#)
 - [8.1 References](#)
- [9 Related Posts](#)



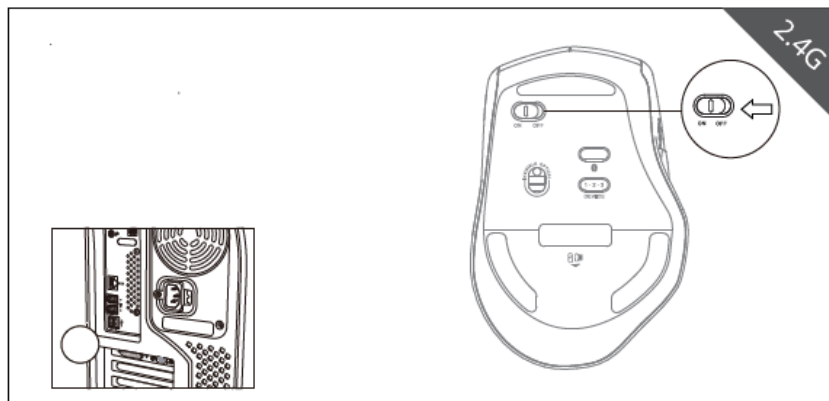
rapoo MT550 Wireless Keyboard and Laser Mouse Combo



Instruction

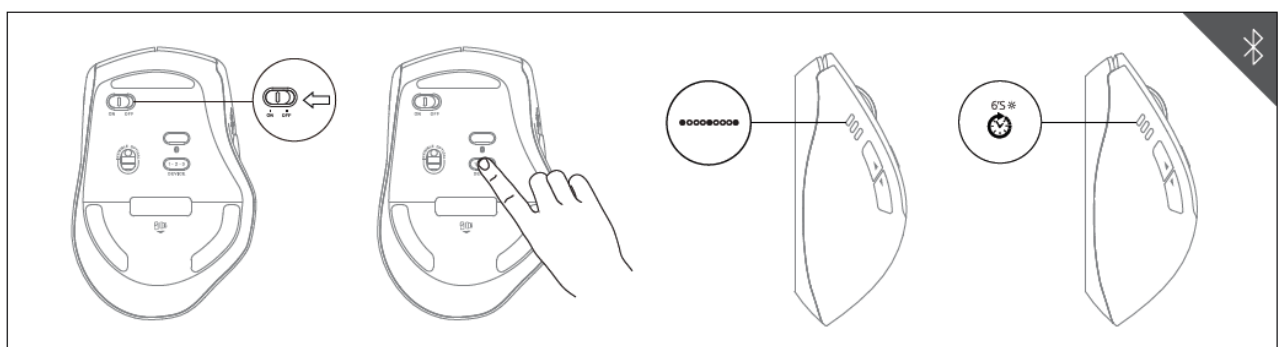
2.4G

1. Plug in Rapoo receiver.
2. Turn on MT550.
3. Done.



Bluetooth 3.0 and 4.0

1. Turn on MT550. Device light starts to blink rapidly.
2. Press device switching button to select the channel on which your device is connected.
3. Press Bluetooth pairing button. Device light starts to blink slowly.
4. Connect MT550 with your Bluetooth device. Blinking stops and remains steady for 6 seconds.
5. Done.



Device light

Three device lights stand for three different Bluetooth devices. There is no device light for 2.4G device.

1. When MT550 connects with a 2.4G device, 3 device lights are off.
2. When MT550 is trying to connect back with a device, the device light starts to blink rapidly.
3. When MT550 is pairing with a Bluetooth device, the device light starts to blink slowly.
4. When MT550 connects with a Bluetooth device, the device light stops blinking and remains steady for 6 seconds.

Status LED

1. 2.4G indicator

Green LED blinks once.

2. Bluetooth mode

The status of the blue LED remains the same as the device light.

3. DPI switching indicator

Green LED blinks. It blinks once when you switch to the first DPI, blinks twice for the second DPI, blinks three times for the third

DPI and blinks four times for the fourth DPI.

4. Low power indicator

Green LED blinks twice rapidly every two seconds when MT550 is working.

Device switching button

Press device switching button to switch among up to 4 devices including a 2.4G device and 3 Bluetooth devices. When MT550 connects with the receiver, press device switching button to switch to the most recently paired Bluetooth device.

Warranty

The device is provided with two-year limited hardware warranty from the purchase day. Please see www.rapoo.com for more information.

FCC Statement

This equipment has been tested and found to comply with the limits for a Class B digital device, pursuant to part 15 of the FCC rules. These limits are designed to provide reasonable protection against harmful interference in a residential installation. This equipment generates, uses and can radiate radio frequency energy and, if not installed and used in accordance with the instructions, may cause harmful interference to radio communications. However, there is no guarantee that interference will not occur in a particular installation. If this equipment does cause harmful interference to radio or television reception, which can be determined by turning the equipment off and on, the user is encouraged to try to correct the interference by one or more of the following measures:

- Reorient or relocate the receiving antenna.
- Increase the separation between the equipment and receiver.
- Connect the equipment into an outlet on a circuit different from that to which the receiver is connected.

- Consult the dealer or an experienced radio/TV technician for help.

To assure continued compliance, any changes or modifications not expressly approved by the party responsible for compliance could void the user's authority to operate this equipment. (Example- use only shielded interface cables when connecting to computer or peripheral devices).

FCC Radiation Exposure Statement

This equipment complies with FCC RF radiation exposure limits set forth for an uncontrolled environment. This transmitter must not be co-located or operating in conjunction with any other antenna or transmitter.

This equipment complies with Part 15 of the FCC Rules. Operation is subject to the following two conditions:

1. This device may not cause harmful interference, and
2. This device must accept any interference received, including interference that may cause undesired operation.

Caution!

The manufacturer is not responsible for any radio or TV interference caused by unauthorized modifications to this equipment. Such modifications could void the user authority to operate the equipment.

Declaration of Conformity

We, the manufacturer Shenzhen Rapoo Technology Co., Ltd.

Fax: +86-0755-2858 8555

Declare that the product

Product Name Multi-mode Wireless Mouse

Model No MT550

Complies with the following norms of:

EN 300 440 V2.1.1(2017-03)

EN 300328 V2.1.1(2016-11)

EN 301 489-1 V2.2.0(2017-03)

EN 301 489-3 V2.1.1(2017-03)

EN 62479:2010

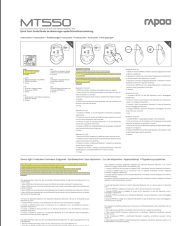
EN 60950-1:2006+A11:2009+A1:2010+A12:2011+A2:2013

EN 301 489-17 V3.2.0(2017-03)

The product is in compliance with the essential requirements of Radio Equipment Directive 2014/53/EU, and the RoHS Directive 2011/65/EU.

It is forbidden to reproduce any part of this quick start guide without the permission of Shenzhen Rapoo Technology Co., Ltd.

Documents / Resources

	<p>rapoo MT550 Wireless Keyboard and Laser Mouse Combo [pdf] User Guide MT550, MT550 Wireless Keyboard and Laser Mouse Combo, Wireless Keyboard and Laser Mouse Combo, Keyboard and Laser Mouse Combo, Laser Mouse Combo, Mouse Combo, Combo</p>
---	--

References

- [Rapoo--Wireless Your Life](#)
- [User Manual](#)

Manuals+