



rapoo MT550 Multi-mode Wireless Mouse User Guide

[Home](#) » [rapoo](#) » rapoo MT550 Multi-mode Wireless Mouse User Guide 

Contents

- [1 rapoo MT550 Multi-mode Wireless Mouse](#)
- [2 Instruction](#)
- [3 Device light](#)
- [4 Status LED](#)
- [5 Device switching button](#)
- [6 Warranty](#)
- [7 FCC Statement](#)
- [8 Documents / Resources](#)
 - [8.1 References](#)
- [9 Related Posts](#)

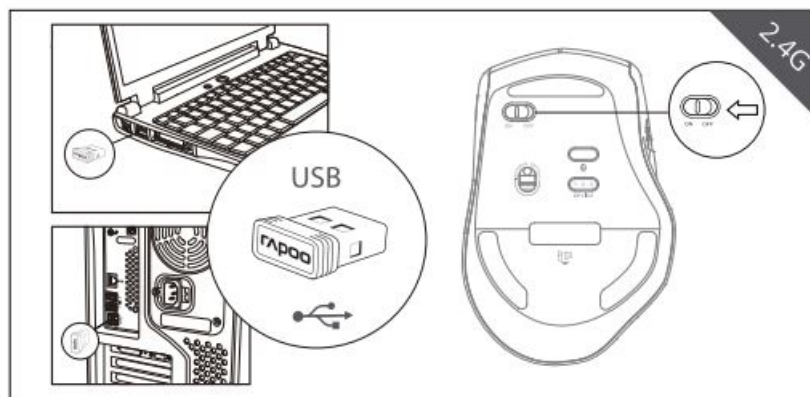
rapoo

rapoo MT550 Multi-mode Wireless Mouse



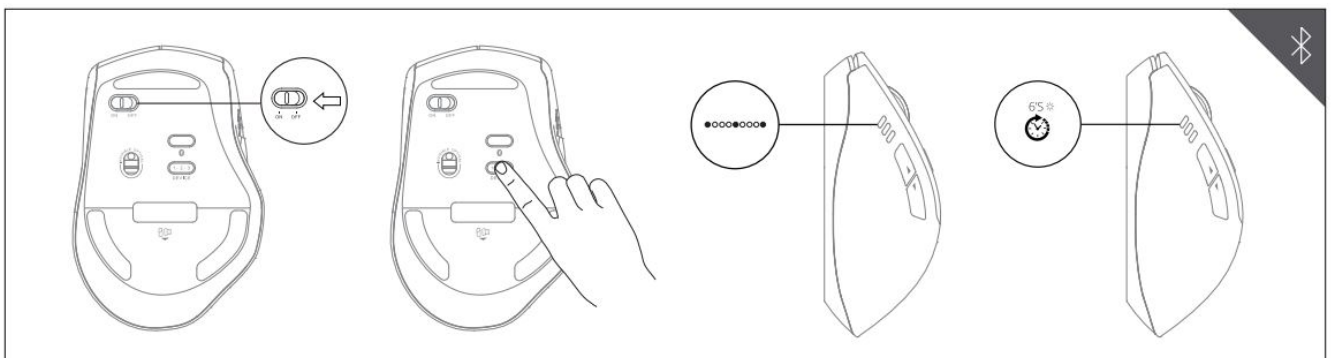
Instruction

2.4G



1. Plug in Rapoo receiver.
2. Turn on MT550.
3. Done.

Bluetooth 3.0 and 4.0



1. Turn on MT550. Device light starts to blink rapidly.
2. Press device switching button to select the channel on which your device is connected.
3. Press Bluetooth pairing button. Device light starts to blink slowly.
4. Connect MT550 with your Bluetooth device. Blinking stops and remains steady for 6 seconds.
5. Done.

Device light

Three device lights stand for three different Bluetooth devices. There is no device light for 2.4G device.

1. When MT550 connects with a 2.4G device, 3 device lights are off.
2. When MT550 is trying to connect back with a device, the device light starts to blink rapidly.
3. When MT550 is pairing with a Bluetooth device, the device light starts to blink slowly.
4. When MT550 connects with a Bluetooth device, the device light stops blinking and remains steady for 6 seconds.

Status LED

1. 2.4G indicator
Green LED blinks once.
2. Bluetooth mode The status of the blue LED remains the same as the device light.
3. DPI switching indicator
Green LED blinks. It blinks once when you switch to the first DPI, blinks twice for the second DPI, blinks three times for the third DPI and blinks four times for the fourth DPI.
4. Low power indicator
Green LED blinks twice rapidly every two seconds when MT550 is working.

Device switching button

Press device switching button to switch among up to 4 devices including a 2.4G device and 3 Bluetooth devices. When MT550 connects with the receiver, press device switching button to switch to the most recently paired Bluetooth device.

Warranty

The device is provided with two-year limited hardware warranty from the purchase day. Please see www.rapoo.com for more information.

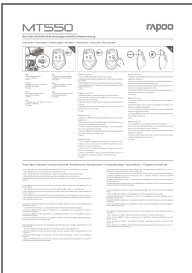

FCC Statement

This equipment has been tested and found to comply with the limits for a Class B digital device, pursuant to part 15 of the FCC rules. These limits are designed to provide reasonable protection against harmful interference in a residential installation. This equipment generates, uses and can radiate radio frequency energy and, if not installed and used in accordance with the instructions, may cause harmful interference to radio communications. However, there is no guarantee that interference will not occur in a particular installation. If this equipment does cause harmful interference to radio or television reception, which can be determined by turning the equipment off and on, the user is encouraged to try to correct the interference by one or more of the following measures:

- eorient or relocate the receiving antenna.
- Increase the separation between the equipment and receiver.
- Connect the equipment into an outlet on a circuit different from that to which the receiver is connected.
- Consult the dealer or an experienced radio/TV technician for help.

To assure continued compliance, any changes or modifications not expressly approved by the party responsible for compliance could void the user’s authority to operate this equipment. (Example- use only shielded interface cables when connecting to computer or peripheral devices).

Documents / Resources

	<p>rapoo MT550 Multi-mode Wireless Mouse [pdf] User Guide MT550, Multi-mode Wireless Mouse, Wireless Mouse</p>
	<p>rapoo MT550 Multi Mode Wireless Mouse [pdf] User Guide MT550 Multi Mode Wireless Mouse, MT550, MT550 Wireless Mouse, Multi Mode Wireless Mouse, Wireless Mouse</p>

References

- [rapoo Rapoo--Wireless Your Life](#)