

rapoo M610 Multi Mode Wireless Mouse



rapoo M610 Multi Mode Wireless Mouse User Guide

[Home](#) » [rapoo](#) » rapoo M610 Multi Mode Wireless Mouse User Guide 

Contents

- [1 rapoo M610 Multi Mode Wireless Mouse](#)
- [2 Overview](#)
- [3 Packaging contents](#)
- [4 Connection mode](#)
- [5 Warranty conditions](#)
- [6 Documents / Resources](#)
 - [6.1 References](#)

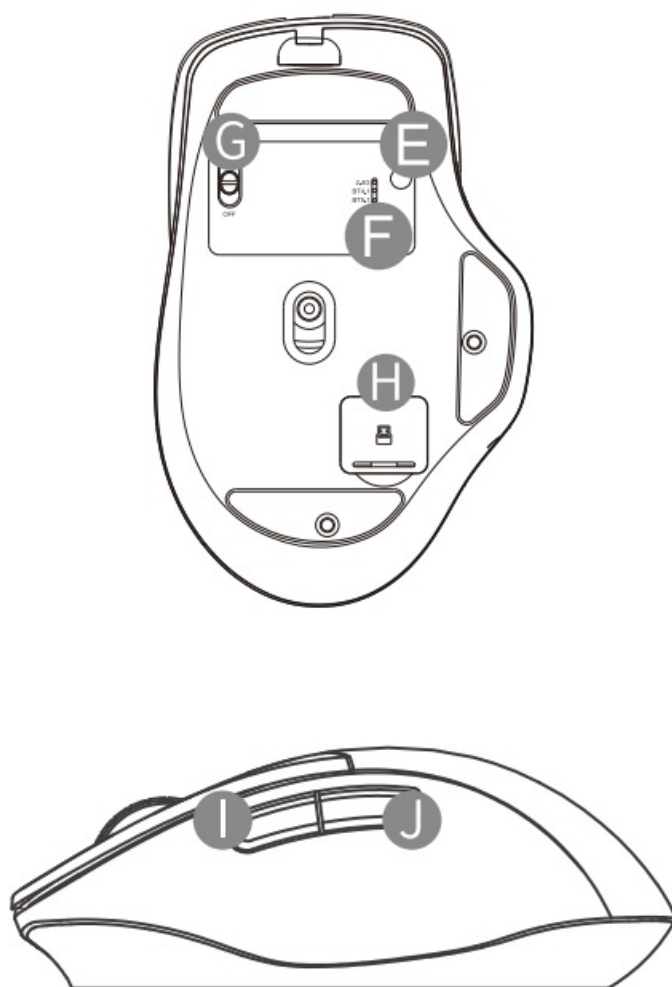
rapoo

rapoo M610 Multi Mode Wireless Mouse

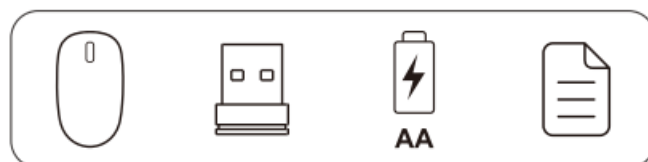


Overview

- **A** Left button
- **B** Right button
- **C** Middle button/scroll wheel
- **D** DPI button
- **E** Device switching button
- **F** Device indicator
- **G** Power switch
- **H** Receiver compartment
- **I** Forward button
- **J** Back button

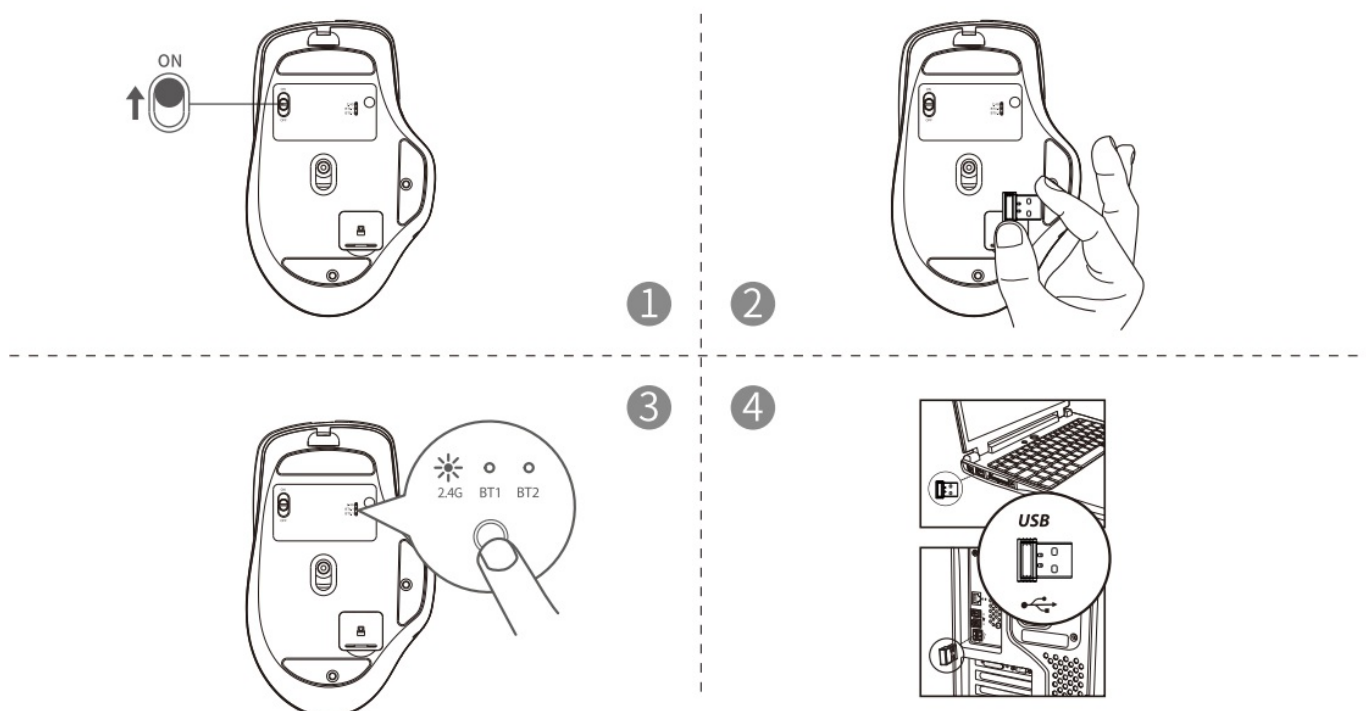


Packaging contents

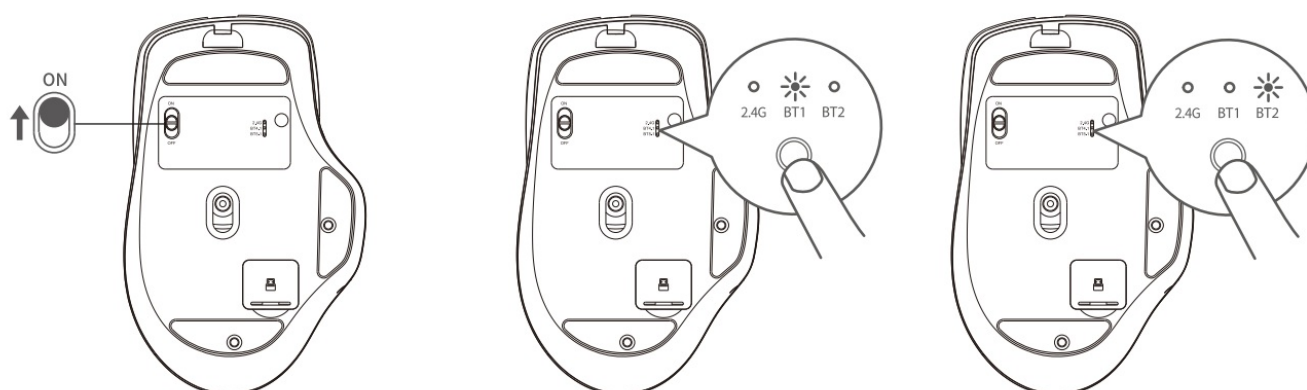


Connection mode

2.4G Mode



Bluetooth mode



1. Turn on the mouse.
2. Press the device switching button to switch to BT1 or BT2 mode until the corresponding device indicator flashes slowly.
3. Press and hold the device switching button for 3-5 seconds until the corresponding device indicator flashes quickly and the mouse is pairing.
4. Complete "Bluetooth Pairing" on your device.
 - *RAPOO BT Mouse-1 / RAPOO BT Mouse-2
 - *Bluetooth mode is not compatible with Windows 7.

Mode Switching

Briefly press the device switching button to switch between 2.4G mode, Bluetooth 1 mode, and Bluetooth 2 mode.

Safety Instructions

- Please scan the QR code



Warranty conditions

- This device is covered by a 2-year limited hardware warranty from the date of purchase.



System requirements

- Windows®8/10/11, Mac OS X 10.4 or later, USB port

Legal & Compliance Information

- **Product:** Multi-mode Wireless Mouse
- **Model:** M610
- www.rapoo-eu.com.
- as-europe@rapoo.com.

Manufacturer:

- Rapoo Europe B.V.
- Prismalaan West 27
- 2665 PC Bleiswijk
- The Netherlands

UK Authorized Representative (for authorities only):

- ProductIP (UK) Ltd.
- 8, Northumberland Av.
- London WC2N 5BY
- United Kingdom

EN Conformity Information: Hereby, Rapoo Europe B.V. declares that this radio equipment product is in compliance with Directive 2014/53 EU (RED) and all other applicable EU Regulations. The full text of the EU Declaration of Conformity is available at the following internet address: www.rapoo-eu.com.
Operating frequency band: 2402-2479MHz Maximum radio-frequency power transmitted: 5dBm/3.16mW

Recycling Information

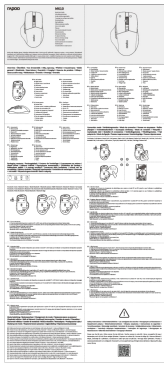
Disposal of Packaging Materials: The packaging materials have been selected for their environmental friendliness and are recyclable. Dispose of packaging materials which are no longer needed in accordance with applicable local regulations.

Disposal of the Device: The symbol above and on the product means that the product is classed as Electrical or Electronic equipment and should not be disposed with other household or commercial waste at the end of its useful life. The Waste of Electrical and Electronic Equipment (WEEE) Directive has been put in place to recycle products using best available recovery and recycling techniques to minimise the impact on the environment, treat any hazardous substances and avoid the increasing landfill. Contact local authorities for information on the correct disposal of Electrical or Electronic equipment.

Disposal of Batteries: Used batteries may not be disposed of in normal household waste. All consumers are required by law to dispose of batteries at a collection point provided by their local community or at a retail store. The purpose of this obligation is to ensure that batteries are disposed of in a non-polluting manner. Only dispose of batteries when they are fully discharged. Cover the poles of partially discharged batteries with tape to prevent short circuits.

Made in China ©2024 Rapoo. All rights reserved. The Bluetooth® word mark and logos are registered trademarks owned by Bluetooth SIG, Inc. and any use of such marks by Rapoo is under license. Rapoo, the Rapoo logo and other Rapoo marks are owned by Rapoo and may be registered. All other trademarks are property of their respective owners. It's forbidden to reproduce any part of this quick start guide without the permission of Rapoo.

Documents / Resources



[rapoo M610 Multi Mode Wireless Mouse](#) [pdf] User Guide

M610 Multi Mode Wireless Mouse, M610, Multi Mode Wireless Mouse, Wireless Mouse, Mouse

References

- [User Manual](#)

[Manuals+.](#) [Privacy Policy](#)

This website is an independent publication and is neither affiliated with nor endorsed by any of the trademark owners. The "Bluetooth®" word mark and logos are registered trademarks owned by Bluetooth SIG, Inc. The "Wi-Fi®" word mark and logos are registered trademarks owned by the Wi-Fi Alliance. Any use of these marks on this website does not imply any affiliation with or endorsement.