



## rapoo M600 Multi-Mode Wireless Mouse User Guide

[Home](#) » [rapoo](#) » rapoo M600 Multi-Mode Wireless Mouse User Guide 

### Contents

- [1 rapoo M600 Multi-Mode Wireless Mouse](#)
- [2 Package contents](#)
- [3 CONNECTION](#)
- [4 Bluetooth mode](#)
- [5 Switching among paired devices](#)
- [6 Status LED](#)
- [7 Warranty conditions](#)
- [8 System Requirements](#)
- [9 Legal & Compliance Information](#)
- [10 Conformity Information](#)
- [11 Disposal](#)
- [12 Documents / Resources](#)
- [13 Related Posts](#)



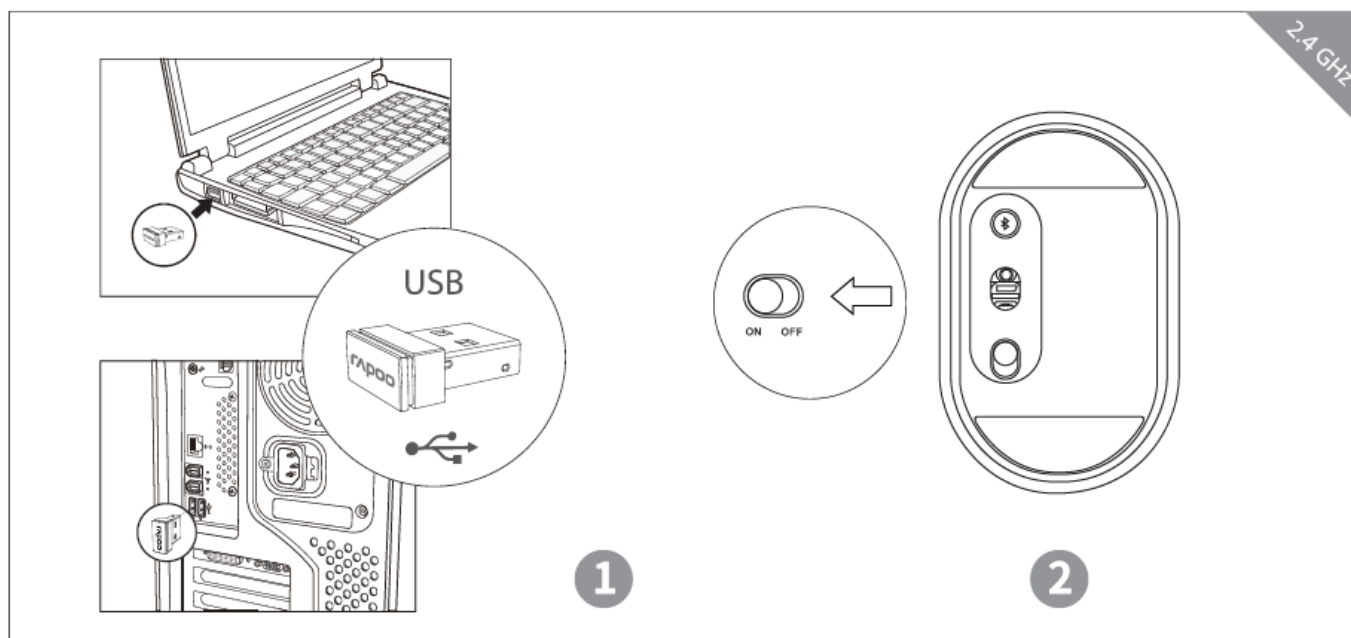
**rapoo M600 Multi-Mode Wireless Mouse**



## Package contents

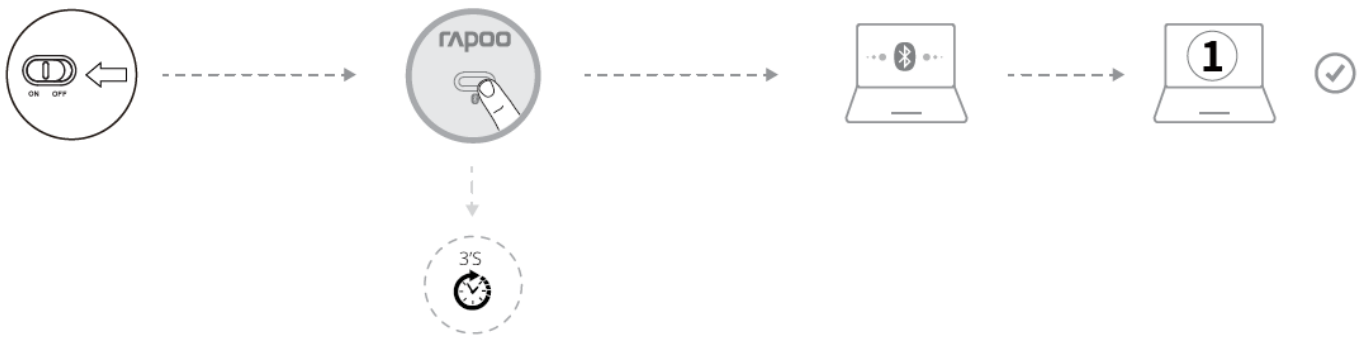


## CONNECTION



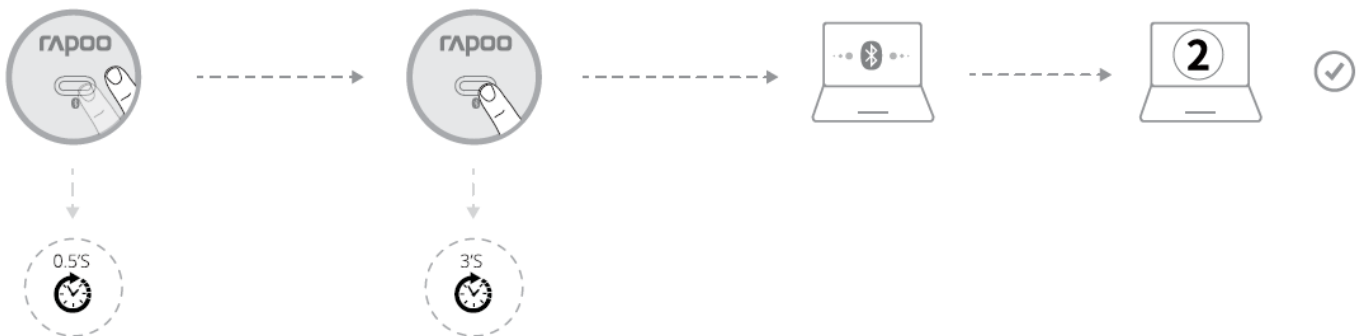
## Bluetooth mode

### Pair your first device



- Turn on the mouse.
- Keep pressing the Bluetooth button at least 3 seconds to pair. The status LED flashes red slowly. The mouse is discoverable for 2 minutes.
- Complete Bluetooth pairing on your device as follows. When the mouse and your device are paired, the light turns off.

### Pair your second device



- Press the Bluetooth button to switch to another channel.
- Follow steps 2 and 3 of “Pair your first device” to connect your second device.

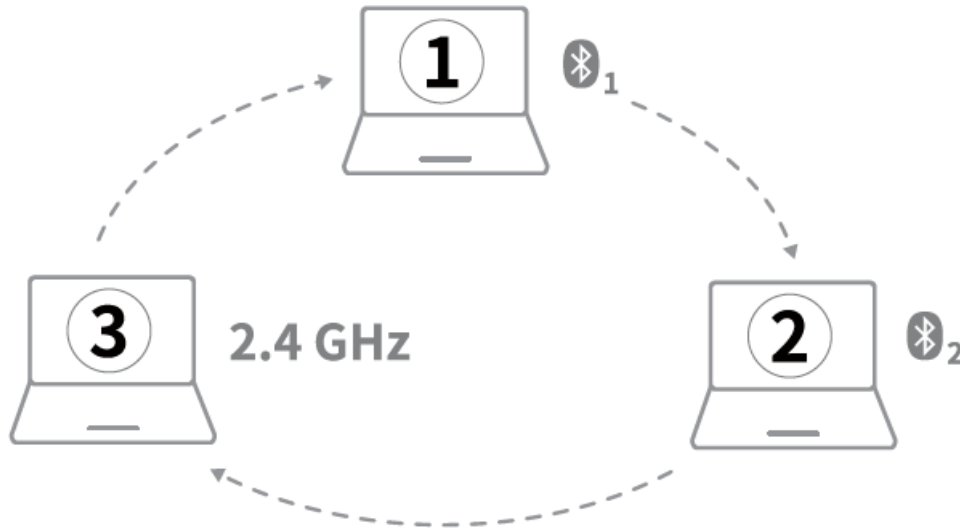
### Windows®7 and 8

1. Click the “Start” button, then select Control Panel> Add a device.
2. Select “RAPOO 3.0MS ” or “RAPOO 5.0MS” from the list, then click Next.

### Windows®10 and 11

1. Click the “Start” button, then select Settings > Devices > Bluetooth.
2. Select “RAPOO 3.0MS ” or “RAPOO 5.0MS” from the list, then click Pair.

## Switching among paired devices



- Press Bluetooth button to switch among up to 3 paired devices. The mouse connects up to 2 devices via Bluetooth and 1 via a 2.4 GHz receiver.

## Status LED

### When you pick up the mouse

- If the red light turns stable for 6 seconds, Bluetooth device 1 is paired. If the red light flashes slowly, Bluetooth device 2 is paired. If the light is off, the 2.4 GHz device is paired.

## Low battery

- Red light rapidly flashes twice every two seconds when you use the mouse.

## Warranty conditions

This device is covered by a 2-year limited hardware warranty From the date of purchase. For more information, please visit [www.rapoo-eu.com](http://www.rapoo-eu.com).

## System Requirements

- Windows® 7/8/10/11, Mac OSX 10.4 or later, USB port

## Legal & Compliance Information

- **Product:** Rapoo Multi-mode Wireless Mouse
- **Model:** M600mini Silent
- [www.rapoo-eu.com](http://www.rapoo-eu.com)
- [as-europe@rapoo.com](mailto:as-europe@rapoo.com)
- **Manufacturer:** Rapoo Europe B.V. Weg en Bos 132 C/D 2661 GX Bergschenhoek The Netherlands
- **UK Authorized Representative (for authorities only):** ProductIP (UK) Ltd. 8, Northumberland Av. London NC2N 5BY United Kingdom

## Conformity Information

Hereby, Rapoo Europe B.V. declares that this radio equipment product is in compliance with Directive 2014/53 EU (RED) and all other applicable EU Regulations. The full text of the EU Declaration of Conformity is available at the following internet address: [www.rapoo-eu.com](http://www.rapoo-eu.com).

- **Operating frequency band:** 2402-2480MHz
- **Maximum radio-frequency power transmitted:** 5dBm/3.16mW

**Conformity Information the United Kingdom:** Hereby, ProductIP (UR) Ltd., as authorized representative of Rapoo Europe B.V., declares that this radio equipment product is in compliance with the UK Radio Equipment Regulations 2017 and all other applicable UK Regulations. The full text of the UK edition of Conformity is available at the following internet address: [www.rapoo-eu.com](http://www.rapoo-eu.com).

- **operating frequency band:** 2402 to 2480 MHz.
- **Maximum radio-frequency power transmitted:** 5dBm/3.16mw

## Disposal

**Disposal of Packaging Materials:** The packaging materials have been selected for their environmental friendliness and are recyclable. Dispose of packaging materials that are no longer needed in accordance with applicable local regulations.

**Disposal of the Device:** The symbol above and on the product means that the product is classed as Electrical or Electronic equipment and should not be disposed with other household or commercial waste at the end of its useful life. The Waste of Electrical and Electronic Equipment (WEEE) Directive has been put in place to recycle products using best available recovery and recycling techniques to minimize the impact on the environment, treat any hazardous substances, and avoid the increasing landfill. Contact local authorities for information on the correct disposal of Electrical or Electronic equipment.

**Disposal of Batteries:** Used batteries may not be disposed of in the normal household waste. All consumers are required by law to dispose of batteries at a collection point provided by their local community or at a retail store. The purpose of this obligation is to ensure that batteries are disposed of in a non-polluting manner. Only dispose of batteries when they are fully discharged. Cover the poles of partially discharged batteries with tape to prevent short circuits.

Made in China


2022 Rapoo. All rights reserved. The Bluetooth® word mark and logos are registered trademarks owned by Bluetooth SIG, Inc. and any use of such marks by Rapoo is under license. Rapoo, the Rapoo logo and other Rapoo marks are owned by Rapoo and may be registered. All other trademarks are the property of their respective owners.

It was forbidden to reproduce any part of this quick start guide without the permission of Rapoo.



[www.rapoo-eu.com](http://www.rapoo-eu.com)

## Documents / Resources

	<p><a href="#">rapoo M600 Multi-Mode Wireless Mouse</a> [pdf] User Guide M600 Multi-Mode Wireless Mouse, M600, Multi-Mode Wireless Mouse, Mode Wireless Mouse, Wireless Mouse, Mouse</p>
---	--