



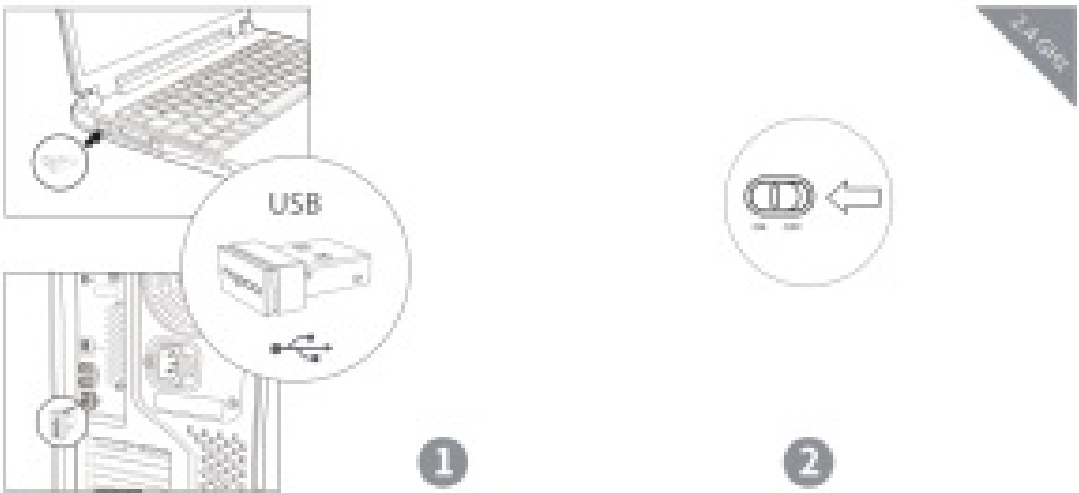
# rapoo M100 Multi-Mode Wireless Mouse User Guide

[Home](#) » [rapoo](#) » rapoo M100 Multi-Mode Wireless Mouse User Guide 



Quick Start Guide  
Multi-mode Wireless Mouse

M100,M200,M260,M280,M100Silent,M200Silent,M260 Silent, M280 Silent

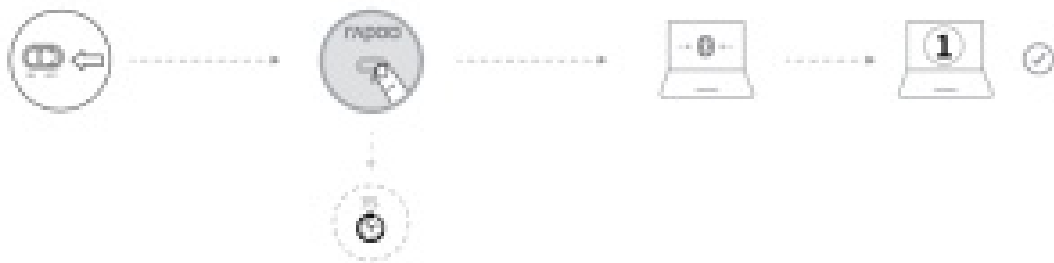


## Contents

- 1 Bluetooth mode
- 2 Turn on mouse
- 3 Switch among paired devices
- 4 Status LED
- 5 Warranty
- 6 FCC Statement
- 7 Documents / Resources
  - 7.1 References
- 8 Related Posts

## Bluetooth mode

Pair your first device

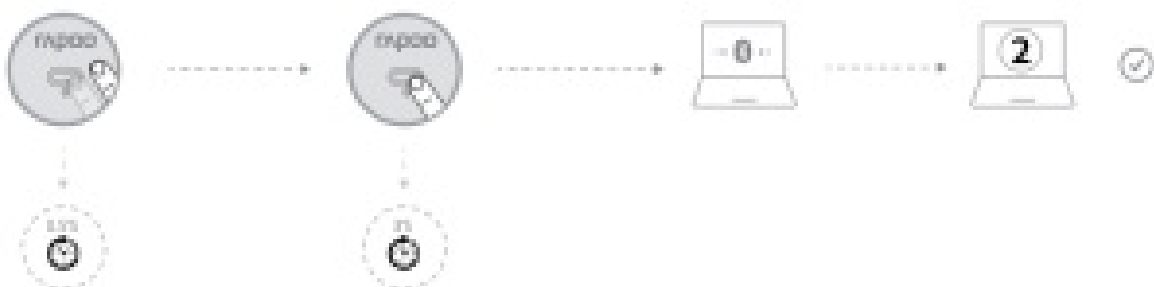


## Turn on mouse

Keep pressing the Bluetooth button for at least 3 seconds to pair. The status LED flashes red slowly. The mouse is discoverable for 2 minutes.

Complete Bluetooth pairing on your device as follows. When the mouse and your device are paired, the light turns off.

Pair your second device



Press the Bluetooth button to switch to another channel.

Follow steps 2 and 3 of “Pair your first device” to connect your second device.

Windows®7 and 8:

- (1) Click the “Start” button, then select Control Panel > Add a device.
- (2) Select “RAPOO 3.0 MS” or “RAPOO 5.0 MS ” from the list, then click Next.

Windows®10:

- (1) Click the “Start” button, then select Settings > Devices > Bluetooth.
- (2) Select “RAPOO 3.0 MS” or “RAPOO 5.0 MS” from the list, then click Pair.

## Switch among paired devices

Press the Bluetooth button to switch among up to 3 paired devices. The mouse connects up to 2 devices via Bluetooth and 1 via a 2.4 GHz receiver.



## Status LED

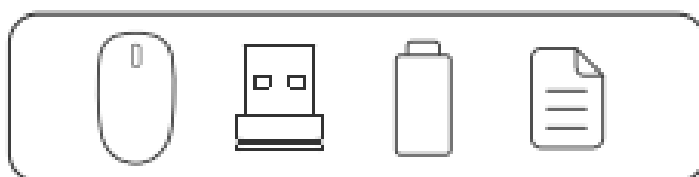
### When you pick up the mouse

If the red light turns stable for 6 seconds, Bluetooth device 1 is paired. If the red light flashes slowly, Bluetooth device 2 is paired. If the light is off, the 2.4 GHz device is paired.

### Low battery

The red light rapidly flashes twice every two seconds when you use the mouse.

## Package contents



Windows®XP / Vista / 7 / 8 / 10 or later, USB port

## Warranty

The device is provided with a two-year limited hardware warranty from the purchase day. Please see [www.rapoo.com](http://www.rapoo.com) for more information.



<http://www.rapoo.com>

## FCC Statement

This equipment has been tested and found to comply with the limits for a Class B digital device, pursuant to part 15 of the FCC rules. These limits are designed to provide reasonable protection against harmful interference in a residential installation. This equipment generates, uses, and can radiate radio frequency energy and, if not

installed and used in accordance with the instructions, may cause harmful interference to radio communications. However, there is no guarantee that interference will not occur in a particular installation. If this equipment does cause harmful interference to radio or television reception, which can be determined by turning the equipment off and on, the user is encouraged to try to correct the interference by one or more of the following measures:

- Reorient or relocate the receiving antenna.
- Increase the separation between the equipment and receiver.
- Connect the equipment into an outlet on a circuit different from that to which the receiver is connected.
- Consult the dealer or an experienced radio/TV technician for help.

To assure continued compliance, any changes or modifications not expressly approved by the party responsible for compliance could void the user's authority to operate this equipment. (Example- use only shielded interface cables when connecting to computer or peripheral devices).

#### **FCC Radiation Exposure Statement**

This equipment complies with FCC RF radiation exposure limits set forth for an uncontrolled environment. This transmitter must not be co-located or operating in conjunction with any other antenna or transmitter. This equipment complies with Part 15 of the FCC Rules. Operation is subject to the following two conditions:

- (1) This device may not cause harmful interference, and
- (2) This device must accept any interference received, including interference that may cause undesired operation.

Caution!

The manufacturer is not responsible for any radio or TV interference caused by unauthorized modifications to this equipment. Such modifications could void the user's authority to operate the equipment.

#### **FCC Radiation Exposure Statement**

This equipment complies with FCC RF radiation exposure limits set forth for an uncontrolled environment. This transmitter must not be co-located or operating in conjunction with any other antenna or transmitter. This equipment complies with Part 15 of the FCC Rules. Operation is subject to the following two conditions:

- (1) This device may not cause harmful interference, and
- (2) This device must accept any interference received, including interference that may cause undesired operation.

Caution!

The manufacturer is not responsible for any radio or TV interference caused by unauthorized modifications to this equipment. Such modifications could void the user's authority to operate the equipment.

#### **IC RSS warning**

This device complies with Industry Canada licence-exempt RSS standard (s).

Operation is subject to the following two conditions:

- (1) this device may not cause interference, and
- (2) this device must accept any interference, including interference that may cause undesired operation of the device.

#### **IC Radiation Exposure Statement:**

This equipment complies with IC RF radiation exposure limits set forth for an uncontrolled environment. This transmitter must not be co-located or operating in conjunction with any other antenna or transmitter.

Any changes or modifications not expressly approved by the party responsible for compliance could void the user's authority to operate the equipment.

It is forbidden to reproduce any part of this quick start guide without the permission of Shenzhen Rapoo Technology Co., Ltd.



#### **Declaration of Conformity**

We, the manufacturer Shenzhen Rapoo Technology Co., Ltd. Fax: +86-0755-2858 8555

Declare that the product Product Name : Multi-mode Wireless Mouse Model No : M100, M200, M260, M280, M100 Silent, M200 Silent, M260 Silent M280 Silent Complies with the following norms of :

EN 300 440 V2.1.1(2017-03)

EN 300328 V2.1.1(2016-11)

EN 301 489-1 V2.2.0(2017-03)

EN 301 489-3 V2.1.1(2017-03)

EN 301 489-17 V3.2.0(2017-03)

EN 62479:2010  
EN 60950-1:2006+A11:2009+A1:2010+A12:2011+A2:2013  
The product is in compliance with the essential requirements of Radio Equipment Directive 2014/53/EU, and the RoHS Directive 2011/65/EU.  
Manufacturer/Authorised representative  
Kai Guo, ManagerR&D Department Date of Issue: Aug. 30, 2017

*Kai Guo*

Made in China



Documents / Resources

	<p><a href="#">rapoo M100 Multi-Mode Wireless Mouse</a> [pdf] User Guide M100, M200, M260, M280, M100 Silent, M200 Silent, M260 Silent, M280 Silent, Multi-Mode Wireless Mouse</p>
	<p><a href="#">rapoo M100 Multi-mode Wireless Mouse</a> [pdf] User Guide M100, M200, M260, Multi-mode Wireless Mouse, Wireless Mouse, Multi-mode Mouse, Mouse</p>

References

- [rapoo Rapoo--Wireless Your Life](#)