



rapoo M Series Multi Mode Wireless Mouse User Manual

[Home](#) » [rapoo](#) » rapoo M Series Multi Mode Wireless Mouse User Manual 

Contents

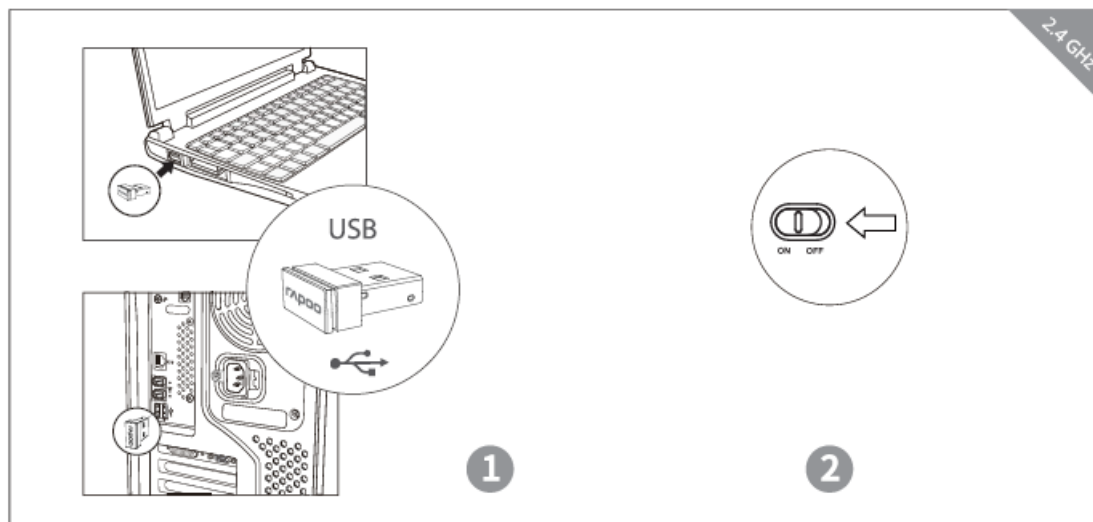
- [1 rapoo M Series Multi Mode Wireless Mouse](#)
- [2 Multi-mode Wireless Mouse](#)
- [3 Warranty conditions](#)
- [4 Documents / Resources](#)
- [5 Related Posts](#)



rapoo M Series Multi Mode Wireless Mouse

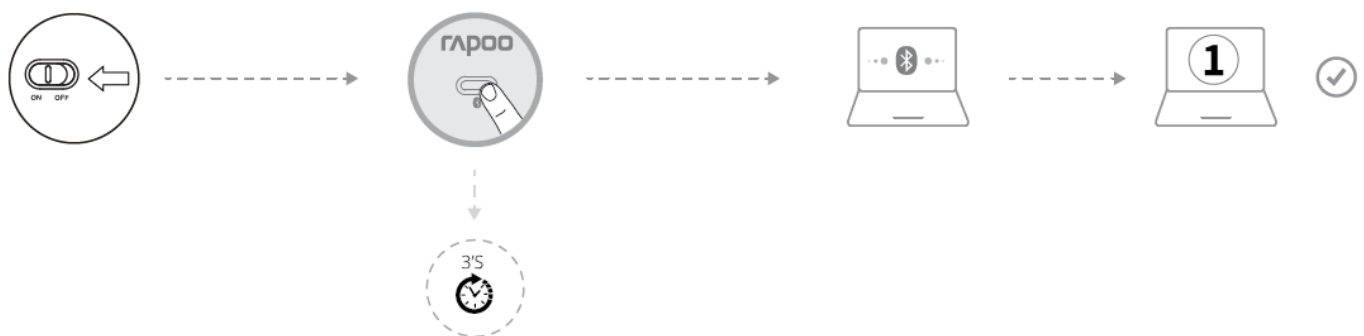


Multi-mode Wireless Mouse



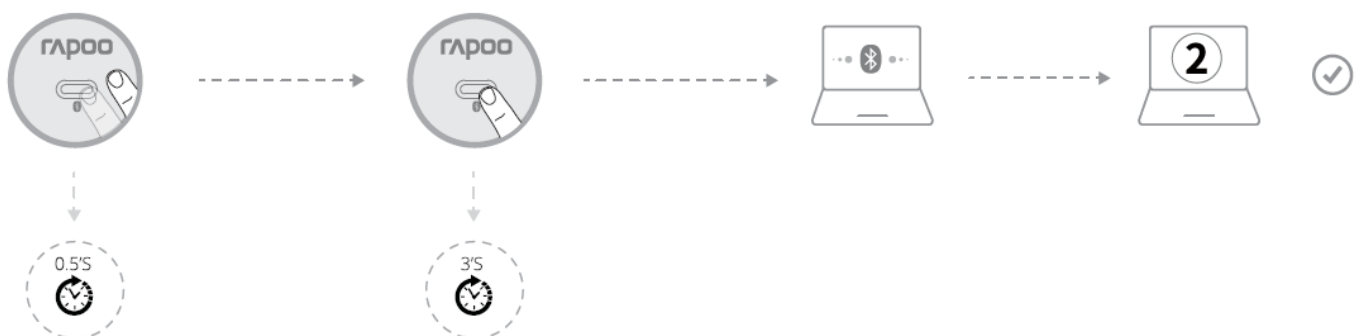
Bluetooth mode

Pair your first device



Modo Bluetooth

Pair your second device



- Turn on the mouse.
- Keep pressing the Bluetooth button at least 3 seconds to pair. The status LED flashes green slowly. The mouse is discoverable for 2 minutes.
- Press the Bluetooth button to switch to another channel.
- Complete Bluetooth pairing on your device as follows. When the mouse and your device are paired, the light turns off.

Switching among paired devices

- Press Bluetooth button to switch among up to 3 paired devices. The mouse connects up to 2 devices Via Bluetooth and 1 Via a 2.4 GHz receiver.

Status LED

If the red light turns stable for 6 seconds, Bluetooth device 1 is paired. If the red light flashes slowly, Bluetooth device 2 is paired. If the light is off, the 2.4 GHz device is paired.

Low battery

Red light rapidly flashes twice every two seconds when you use the mouse.

Warranty conditions

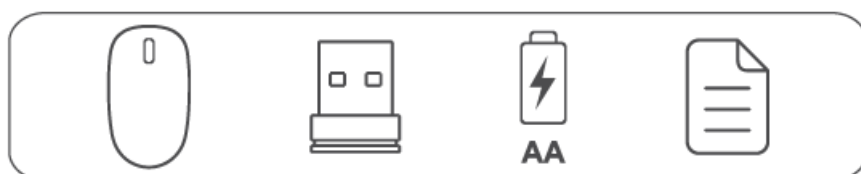
This device is covered by a 2-year limited hardware warranty from the date of purchase. For more information, please visit www.rapoo-eu.com.



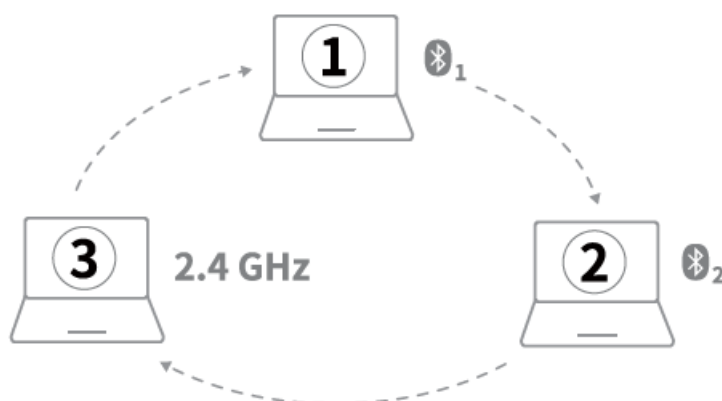
System Requirements

Windows® 7/8/10/11, Mac OS X 10.4 or later, USB port

Package contents



Switching among paired devices




Press Bluetooth button to switch among up to 3 paired devices. The mouse connects up to 2 devices Via Bluetooth and 1 Via a 2.4 GHZ receiver.

Disposal of Packaging Materials: The packaging materials have been selected for their environmental friendliness and are recyclable. Dispose of packaging materials which are no longer needed in accordance with applicable local regulations.

© 2022 Rapoo. All rights reserved. The Bluetooth® word mark and logos are registered trademarks owned by Bluetooth SIG, Inc. and any use of such marks by Rapoo is under license. Rapoo, the Rapoo logo and other Rapoo marks are owned by Rapoo and may be registered. All other trademarks are property of their respective owners. Es ist verboten, Teile dieses Schnellstartführers ohne Genehmigung von Rapoo zu reproduzieren.

Documents / Resources

	<p>rapoo M Series Multi Mode Wireless Mouse [pdf] User Manual</p> <p>M100, M200, M260, M280, M100 Silent, M200 Silent, M200 Plus Silent, M260 Silent, M280 Silent, M Series Multi Mode Wireless Mouse, M Series Wireless Mouse, Multi Mode Wireless Mouse, Wireless Mouse, Mouse</p>
---	--