



rapoo E2710 E2710 Wireless Multimedia Touchpad Keyboard User Guide

[Home](#) » [rapoo](#) » rapoo E2710 E2710 Wireless Multimedia Touchpad Keyboard User Guide 

Contents

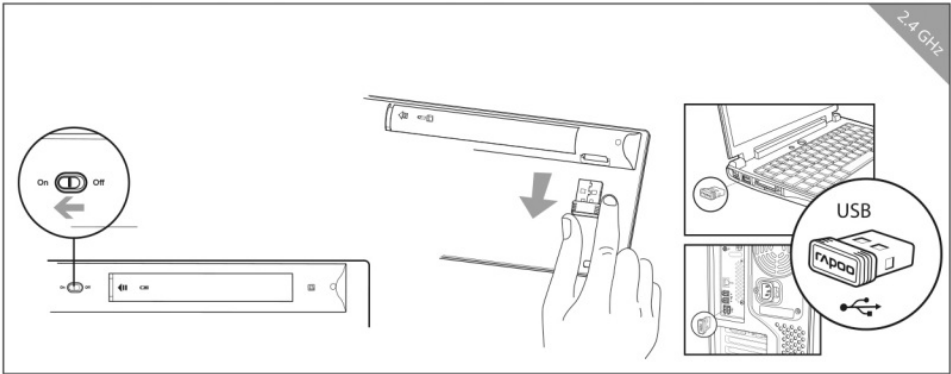
- 1 Quick Start Guide
 - 1.1 Troubleshooting
- 2 System Requirements
- 3 Warranty conditions
- 4 Package contents
- 5 Legal & Compliance Information
- 6 Documents / Resources
- 7 Related Posts

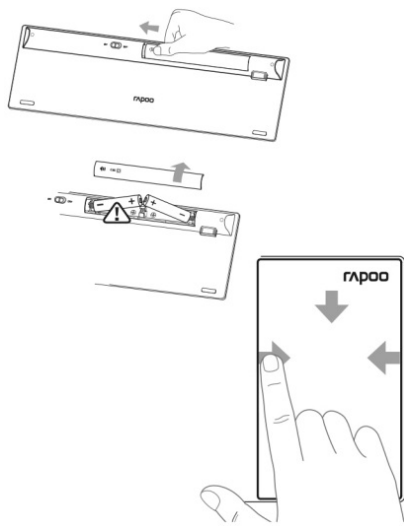


Quick Start Guide

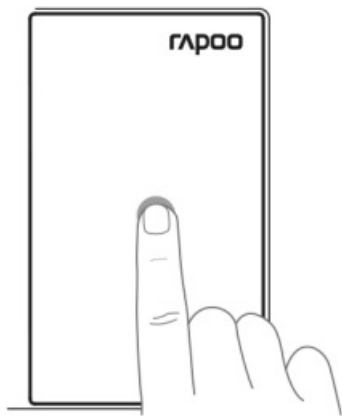
E2710

Wireless Multi-media Touchpad Keyboard

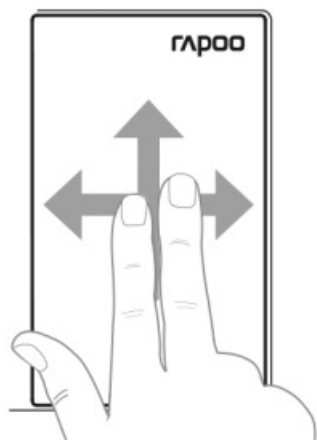




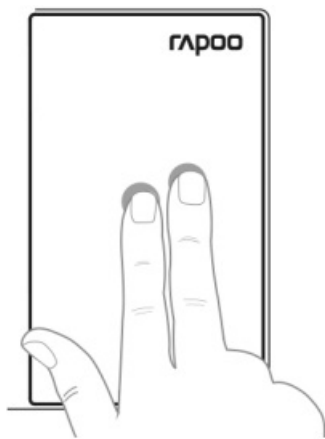
Applications switch: Switch from the left edge using a single finger
 Open Charm menu: Switch from the right edge using a single finger
 Open applications: Switch from the top edge using a single finger



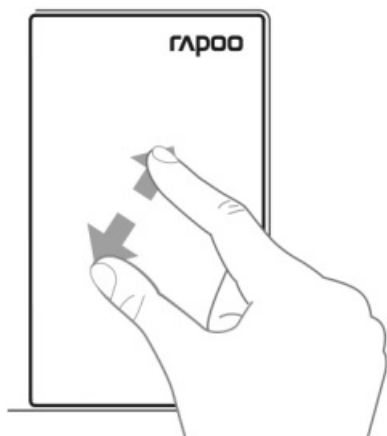
Swipe cursor: Move using a single finger
 Left click: Click using a single finger
 Drag: Double click and drag a finger on the touchpad



Vertical scrolling: Swipe up and down using two fingers
 Horizontal scrolling: Swipe left and right using two fingers



Right click: Click using two fingers



Zoom in/Zoom out: Two fingers separate/get together

Troubleshooting

See www.rapoo-eu.com for latest FAQs, drivers and quick start guide.

Copyright

It is forbidden to reproduce any part of this quick start guide without the permission of Rapoo.

Safety instructions

Do not open or repair this device. Do not use the device in a damp environment. Clean the device with a dry cloth.

Warranty

The device is provided with two-year limited hardware warranty from the purchase day. Please see www.rapoo-eu.com for more information.

System Requirements

Windows® 7/8/10/11, Mac OS X 10.4 or later, USB port

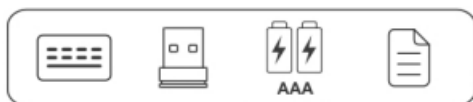
Warranty conditions

This device is covered by a 2-year limited hardware warranty from the date of purchase. For more information, please visit www.rapoo-eu.com.



www.rapoo-eu.com

Package contents



Legal & Compliance Information

Product: Rapoo Wireless Multi-media Touchpad Keyboard

Model: E2710

www.rapoo-eu.com

as-europe@rapoo.com

Manufacturer:

Rapoo Europe B.V.
Weg en Bos 132 C/D
2661 GX Bergschenhoek
The Netherlands

UK Authorized Representative

(for authorities only):

ProductIP (UK) Ltd.
8, Northumberland Av.
London WC2N 5BY
United Kingdom



Conformity Information: Hereby, Rapoo Europe B.V. declares that this radio equipment product is in compliance with Directive 2014/53 EU (RED) and all other applicable EU Regulations. The full text of the EU Declaration of Conformity is available at the following internet address: www.rapoo-eu.com. **Operating frequency band:** 2402-2479MHz **Maximum radio-frequency power transmitted:** 5dBm/3.16mW



Conformity Information United Kingdom: Hereby, ProductIP (UK) Ltd., as authorized representative of Rapoo

Europe B.V., declares that this radio equipment product is in compliance with the UK Radio Equipment Regulations 2017 and all other applicable UK Regulations. The full text of the UK Declaration of Conformity is available at the following internet address: www.rapoo-eu.com. **Operating frequency band:** 2402 to 2479 MHz. **Maximum radio-frequency power transmitted:** 5dBm/3.16mW



Disposal of Packaging Materials: The packaging materials have been selected for their environmental friendliness and are recyclable. Dispose of packaging materials which are no longer needed in accordance with applicable local regulations.



Disposal of the Device: The symbol above and on the product means that the product is classed as Electrical or Electronic equipment and should not be disposed with other household or commercial waste at the end of its useful life. The Waste of Electrical and Electronic Equipment (WEEE) Directive has been put in place to recycle products using best available recovery and recycling techniques to minimise the impact on the environment, treat any hazardous substances and avoid the increasing landfill. Contact local authorities for information on the correct disposal of Electrical or Electronic equipment.



Disposal of Batteries: Used batteries may not be disposed of in normal household waste. All consumers are required by law to dispose of batteries at a collection point provided by their local community or at a retail store. The purpose of this obligation is to ensure that batteries are disposed of in a non-polluting manner. Only dispose of batteries when they are fully discharged. Cover the poles of partially discharged batteries with tape to prevent short circuits.

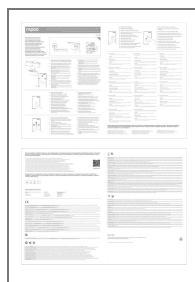
Made in China

©2022 Rapoo Europe B.V. All rights reserved. Rapoo, the Rapoo logo and other Rapoo marks are owned by Rapoo and may be registered. All other trademarks are property of their respective owners.



It's forbidden to reproduce any part of this quick start guide without the permission of Rapoo.

Documents / Resources



[rapoo E2710 E2710 Wireless Multimedia Touchpad Keyboard](#) [pdf] User Guide
E2710 E2710 Wireless Multimedia Touchpad Keyboard, E2710 E2710, Wireless Multimedia To
uchpad Keyboard, Multimedia Touchpad Keyboard, Touchpad Keyboard, Keyboard

